

Converting Colors

HunterLab(72.8869, 5.7959,
7.0639)

Have a look what the booklet for
HunterLab(72.8869, 5.7959, 7.0639)
contains.

HunterLab(72.8766, 5.8233, 7.2145)	3
<i>Conversions</i>	4
<i>Details</i>	6
<i>Harmonies</i>	12
<i>Previews</i>	24
<i>Color Blindness Simulation</i>	28
<i>CSS Examples</i>	31

Color

**HunterLab(72.8766, 5.8233,
7.2145)**

Conversions

Conversions Part 1

Format	Color
Hex	D7BABA
RGB	215, 186, 186
RGB Percent	84%, 73%, 73%
CMY	0.1569, 0.2706, 0.2706
CMYK	0.00, 0.13, 0.13, 0.16
HSL	0°, 27%, 79%
HSV	0°, 13%, 84%
XYZ	54.4461, 53.1100, 53.8359
YIQ	194.6710, 17.2840, 6.1480

Conversions

Conversions Part 2

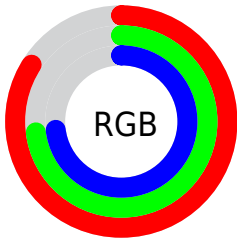
Format	Color
R _Y B	215, 186, 186
Decimal	14138042
CIE Lab	77.94, 10.34, 3.82
CIE LCh	78, 11.020, 20.268
Yxy	53.1124, 0.3374, 0.3291
Android (android.graphics.Color)	4292328122 (0xFFD7BABA)
YUV	194.6710, -4.2748, 17.8285
Hunter-Lab	72.8766, 5.8233, 7.2145

Details

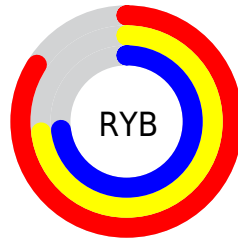
The HunterLab color $72.8766, 5.8233, 7.2145$ is a light color, and the websafe version is hex `CCCCCC`. A complement of this color would be $79.9655, -13.1155, 1.3769$, and the grayscale version is $73.7474, -3.9350, 4.0068$.

A 20% lighter version of the original color is $95.4856, -0.6883, 6.6648$, and $50.9334, 5.9050, 5.6572$ is the 20% darker color. If you saturate the color by 10%, you get $66.2410, 13.7940, 9.4097$, and if you desaturate by 10%, it is $79.9038, -1.8120, 5.1634$.

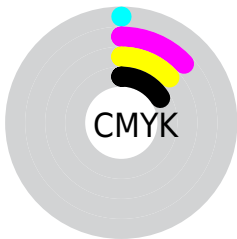
Distribution



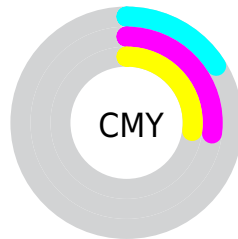
- Red (84%)
- Green (73%)
- Blue (73%)



- Red (84%)
- Yellow (73%)
- Blue (73%)



- Cyan (0%)
- Magenta (13%)
- Yellow (13%)
- Black (16%)




- Cyan (16%)
- Magenta (27%)
- Yellow (27%)

Brightness & Saturation Gradients


These gradients show how the HunterLab color 72.8766, 5.8233, 7.2145 changes by changing the brightness by 10 percent. The first figure shows a shift by +10% for each color and the second figure -10%.


Similar to the brightness gradients but the following saturation gradients show a change of the HunterLab color 72.8766, 5.8233, 7.2145 by changing the saturation by 10% instead.


 72.8766, 5.8233,
7.2145

 72.8766, 5.8233,
7.2145


199.6788, 2.7595,
15.4681

 61.5569, 5.9219,
6.4130


 97.3497, 5.4507,
8.8918

 50.8913, 5.9588,
5.6339


110.4427, 5.1902,
9.7648

 40.9247, 5.9236,
4.8781


124.0751, 4.8842,
10.6605

 31.7099, 5.8059,
4.1447

138.2264, 4.5356,
11.5787

 23.3143, 5.5913,
3.4314

152.8782, 4.1469,
12.5190

 15.8273, 5.2585,
2.7335

168.0140, 3.7200,

 9.3763, 4.7750,

13.4809

2.1980

183.6188, 3.2571,
14.4640

0.0000, INF, NaN

0.0000, NaN, NaN

■ 72.8766, 5.8233,
7.2145

■ 72.8766, 5.8233,
7.2145

■ 66.2410, 13.7940,
9.4097

■ 79.9038, -1.8120,
5.1634

■ 60.0654, 22.0966,
11.7473

■ 87.2598, -9.1295,
3.2407

■ 54.4425, 30.6485,
14.2081

■ 94.9005, -16.1691,
1.4315

■ 49.4821, 39.2441,
16.7311

■ 96.5335, -17.6135,
1.0679

■ 45.3071, 47.4915,

19.1936

■ 42.0369, 54.7886,
21.4024

■ 39.7551, 60.4226,
23.1247

■ 38.4626, 63.8472,
24.1778

■ 38.0103, 65.0895,
24.5613

Harmonies

Analogous

The Analogous color harmony consists of three colors that are next to each other on the color wheel.



72.8782, 6.3263, 2.3249



72.8766, 5.8233, 7.2145



72.8782, 2.6730, 10.9723

Triad

The Triadic color harmony groups three colors that are evenly spaced from another and form a triangle on the color wheel.



72.8782, 5.8211, 7.2157



72.8782, -11.4945, 9.8421



72.8782, -5.5911, -6.1466

Complementary

The Complementary color scheme is a pair of colors which are on the opposite of each other on the color wheel.



72.8766, 5.8233, 7.2145



79.9655, -13.1155, 1.3769

Split Complementary

Split-complementary colors differ from the complementary color scheme. The scheme consists of three colors, the original color and two neighbors of the complement color.



72.8782, -10.2335, -3.8112



72.8766, 5.8233, 7.2145



72.8782, -13.5775, 5.5717

Square

The Square scheme is like the rectangle color scheme, but the four colors are evenly spaced on the color wheel.



72.8782, 5.8211, 7.2157



72.8782, -7.3566, 12.4126



72.8782, -13.1226, 0.5614



72.8782, -0.3625, -5.6286

Rectangle

The Rectangle color scheme consists of four colors that form a rectangle on the color wheel.



72.8766, 5.8233, 7.2145



72.8782, -0.4528, 12.4395



72.8782, -13.1226, 0.5614



72.8782, -7.2695, -5.6633

Sweetspot

The Sweet Spot groups the original color and five complimentary colors.



72.8782, 5.8211, 7.2157



96.4495, -1.6986, 6.3965



73.8050, 10.7523, -5.9801



44.3164, -0.4662, 3.0445

0.0000, NaN, NaN



46.2646, -2.4686, 2.5136

Same Dimension

The Same Dimension uses a secret algorithm to generate beautiful new colors.



72.8782, 5.8211, 7.2157



86.2105, 9.6001, 9.4458



77.1579, -1.6379, 11.8185



35.2436, 1.2454, 2.9631



29.3966, 50.3382, 18.9953



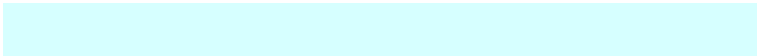
7.2202, 12.3603, 4.6655

Inverse Universe

The Inverse Universe completely reimagines the original color for something new.



79.9655, -13.1155, 1.3769



96.4690, -17.8368, 0.9855



75.4232, -5.8807, -4.1662



37.5601, -4.9372, 1.0570



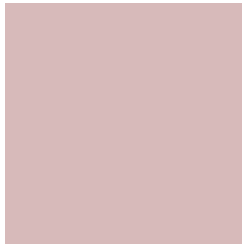
56.5642, -29.9825, -5.9766



13.8920, -7.3639, -1.4673

Previews

White Background



This preview shows how the HunterLab color 72.8766, 5.8233, 7.2145 looks on a white background.

Color Contrast Check

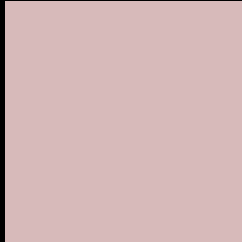
Large Text (above 18pt) WCAG AA × Fail

Any Text WCAG AA × Fail

Large Text (above 18pt) WCAG AAA × Fail

Any Text WCAG AAA × Fail

Black Background



This preview shows how the HunterLab color 72.8766, 5.8233, 7.2145 looks on a black background.

Color Contrast Check

Large Text (above 18pt) WCAG AA ✓ Pass

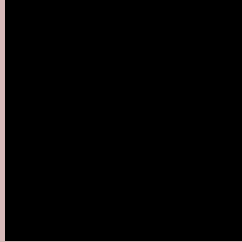
Any Text WCAG AA ✓ Pass

Large Text (above 18pt) WCAG AAA ✓ Pass

Any Text WCAG AAA ✓ Pass

If you want to check with other color combinations, try the [Color Contrast Checker](#).

HunterLab 72.8766, 5.8233, 7.2145 Background



This preview shows how black text looks on a background with the HunterLab color 72.8766, 5.8233, 7.2145.



This preview shows how white text looks on a background with the HunterLab color 72.8766, 5.8233,

7.2145.

Color Blindness Simulation

Color vision deficiency is a very complex topic, and I could not describe the different causes any better than Wikipedia does, so if you want to learn more, you should check out their [article about color blindness](#).

Dichromacy



Original Color

72.8766, 5.8233, 7.2145

Protanopia

72.9683, -2.7859, 5.7947

Deuteranopia

72.7730, 5.4764, 7.0907



Tritanopia

72.8765, 9.5041, 1.6068

Trichromacy



Original Color

72.8766, 5.8233, 7.2145

Protanomaly

73.0035, 0.3479, 6.3508

Deuteranomaly

72.7730, 5.4764, 7.0907

Tritanomaly

72.9328, 7.9703, 3.5888

Monochromacy



Original Color

72.8766, 5.8233, 7.2145

Achromatopsia

73.8732, -3.9417, 4.0137

Achromatomaly

73.5266, -0.6807, 5.0816

CSS Examples

Text

The CSS property to change the color of the text to HunterLab 72.8766, 5.8233, 7.2145 is called "color". The color property can be set on classes, ids or directly on the HTML element.

This example shows how text in the color `rgb(215, 186, 186)` looks like.

```
.text, #text, p{  
    color:rgb(215, 186, 186)  
}
```

If you want to add a text shadow in that color use the text-shadow property, you can generate a text shadow directly with our [CSS Text Shadow Generator](#).

Here you see how black text with a 4 pixel rgb(215, 186, 186) colored shadow looks like.

```
.shadow{ text-shadow: 4px 4px 2px rgb(215, 186, 186) }
```

Border

The CSS property to change the border of an element to HunterLab 72.8766, 5.8233, 7.2145 is called "border".

The border property can be set on classes, ids or directly on the HTML element.

This example shows the color as border, it can be applied via the CSS property "border" or "border-color".

```
.border, #border, table{ border:4px solid rgb(215, 186, 186) }
```


If only the border color should be changed use the property `border-color`.

```
.border{ border-color:rgb(215, 186, 186) }
```

If you want to add a box shadow in that color use:

Here you see how a box with a 4 pixel `rgb(215, 186, 186)` colored shadow looks like.

```
.boxshadow{ -moz-box-shadow:4px 4px 4px  
4px rgb(215, 186, 186); -webkit-box-  
shadow:4px 4px 4px 4px rgb(215, 186, 186);  
box-shadow:4px 4px 4px 4px rgb(215, 186,  
186) }
```

Background

The CSS property to change the background color of an element to HunterLab 72.8766, 5.8233, 7.2145 is called "background". The background property can be set on classes, ids or directly on the HTML element.

```
.background, #background, body{  
background: rgb(215, 186, 186) }
```

If only the background color should be changed can be used:

```
.background{ background-color: rgb(215,  
186, 186) }
```

This example shows the color as background, it is applied via the CSS property "background".

To optimize and compress your CSS code, you can use our [online CSS compressor and optimizer](#) based on csstidy. If you want to create a linear or radial gradient as background or border, check our [CSS Gradient Generator](#).

Hey! You found this booklet interesting? Support Converting Colors with the new Membership Option!

The pro membership hides all ads, plus gives you double the colors in the color bucket, and more awesome pro features!

[Learn more, Memberships starting at \\$2.50/m!](#)

**Follow me
on Twitter!**

@ConvertingColor