

Converting Colors

HunterLab(72.8891, 4.5803,
6.5926)

Have a look what the booklet for
HunterLab(72.8891, 4.5803, 6.5926)
contains.

HunterLab(72.8873, 4.4265, 6.7471)	3
<i>Conversions</i>	4
<i>Details</i>	6
<i>Harmonies</i>	12
<i>Previews</i>	24
<i>Color Blindness Simulation</i>	28
<i>CSS Examples</i>	31

Color

**HunterLab(72.8873, 4.4265,
6.7471)**

Conversions

Conversions Part 1

Format	Color
Hex	D4BBBB
RGB	212, 187, 187
RGB Percent	83%, 73%, 73%
CMY	0.1686, 0.2666, 0.2667
CMYK	0.00, 0.12, 0.12, 0.17
HSL	0°, 23%, 78%
HSV	0°, 12%, 83%
XYZ	53.8914, 53.1256, 54.4276
YIQ	194.4750, 14.9000, 5.3000

Conversions

Conversions Part 2

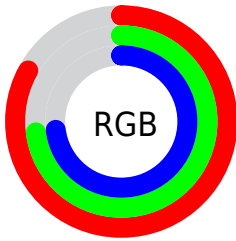
Format	Color
R _Y B	212, 187, 187
Decimal	13941691
CIE Lab	77.95, 8.88, 3.26
CIE LCh	78, 9.461, 20.130
Yxy	53.1279, 0.3338, 0.3291
Android (android.graphics.Color)	4292131771 (0xFFD4BBBB)
YUV	194.4750, -3.6852, 15.3694
Hunter-Lab	72.8873, 4.4265, 6.7471

Details

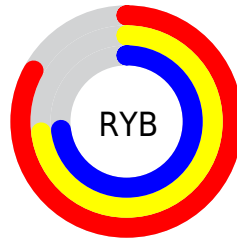
The HunterLab color $72.8873, 4.4265, 6.7471$ is a light color, and the websafe version is hex `CCCCCC`. A complement of this color would be $78.9962, -11.8856, 1.7193$, and the grayscale version is $73.6626, -3.9305, 4.0022$.

A 20% lighter version of the original color is $95.8291, -1.0494, 6.5686$, and $50.9309, 4.5628, 5.2072$ is the 20% darker color. If you saturate the color by 10%, you get $66.2917, 12.2074, 8.8817$, and if you desaturate by 10%, it is $79.8571, -3.0272, 4.7526$.

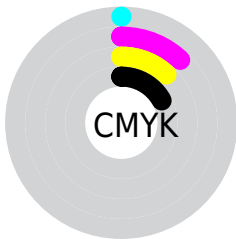
Distribution



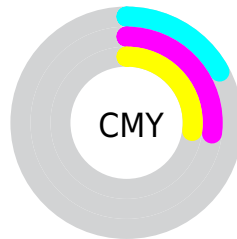
- Red (83%)
- Green (73%)
- Blue (73%)



- Red (83%)
- Yellow (73%)
- Blue (73%)



- Cyan (0%)
- Magenta (12%)
- Yellow (12%)
- Black (17%)



- Cyan (17%)
- Magenta (27%)
- Yellow (27%)

Brightness & Saturation Gradients

These gradients show how the HunterLab color 72.8873, 4.4265, 6.7471 changes by changing the brightness by 10 percent. The first figure shows a shift by +10% for each color and the second figure -10%.

Similar to the brightness gradients but the following saturation gradients show a change of the HunterLab color 72.8873, 4.4265, 6.7471 by changing the saturation by 10% instead.

■ 72.8873, 4.4265,
6.7471

■ 72.8873, 4.4265,
6.7471

199.6937, 0.8489,
14.7995

■ 61.5670, 4.5944,
5.9735

■ 97.3615, 3.9249,
8.3730

■ 50.9008, 4.7041,
5.2243

110.4550, 3.6038,
9.2221

■ 40.9335, 4.7462,
4.5006

124.0879, 3.2393,
10.0949

■ 31.7180, 4.7111,
3.8023

138.2397, 2.8343,
10.9911

■ 23.3216, 4.5853,
3.1279

152.8919, 2.3909,
11.9101

■ 15.8337, 4.3491,
2.4744

168.0281, 1.9110,

■ 9.3817, 3.9714,

12.8515

1.9492

183.6333, 1.3966,
13.8148

0.0000, INF, NaN

0.0000, NaN, NaN

■ 72.8873, 4.4265,
6.7471

■ 72.8873, 4.4265,
6.7471

■ 66.2917, 12.2074,
8.8817

■ 79.8571, -3.0272,
4.7526

■ 60.1344, 20.3198,
11.1571

■ 87.1415, -10.1744,
2.8816

■ 54.5035, 28.6979,
13.5591

■ 94.6991, -17.0552,
1.1194

■ 49.5036, 37.1655,
16.0364

■ 96.3002, -18.4564,
0.7686

■ 45.2540, 45.3733,

18.4803

■ 41.8744, 52.7637,
20.7126

■ 39.4559, 58.6413,
22.5067

■ 38.0175, 62.4148,
23.6660

■ 37.4138, 64.0674,
24.1758

Harmonies

Analogous

The Analogous color harmony consists of three colors that are next to each other on the color wheel.



72.8889, 4.8437, 2.5401



72.8873, 4.4265, 6.7471



72.8889, 1.7466, 10.0159

Triad

The Triadic color harmony groups three colors that are evenly spaced from another and form a triangle on the color wheel.



72.8889, 4.4244, 6.7483



72.8889, -10.4265, 9.0574



72.8889, -5.3728, -4.6315

Complementary

The Complementary color scheme is a pair of colors which are on the opposite of each other on the color wheel.



72.8873, 4.4265, 6.7471



78.9962, -11.8856, 1.7193

Split Complementary

Split-complementary colors differ from the complementary color scheme. The scheme consists of three colors, the original color and two neighbors of the complement color.



72.8889, -9.3663, -2.6482



72.8873, 4.4265, 6.7471



72.8889, -12.2368, 5.3667

Square

The Square scheme is like the rectangle color scheme, but the four colors are evenly spaced on the color wheel.



72.8889, 4.4244, 6.7483



72.8889, -6.8519, 11.2919



72.8889, -11.8535, 1.0727



72.8889, -0.8863, -4.2058

Rectangle

The Rectangle color scheme consists of four colors that form a rectangle on the color wheel.



72.8873, 4.4265, 6.7471



72.8889, -0.9238, 11.3033



72.8889, -11.8535, 1.0727



72.8889, -6.8156, -4.2200

Sweetspot

The Sweet Spot groups the original color and five complimentary colors.



72.8889, 4.4244, 6.7483



96.4495, -1.6986, 6.3966



73.6831, 8.6695, -4.5659



44.3164, -0.4662, 3.0445

0.0000, NaN, NaN



46.2646, -2.4686, 2.5136

Same Dimension

The Same Dimension uses a secret algorithm to generate beautiful new colors.



72.8889, 4.4244, 6.7483



87.8708, 7.6749, 8.9205



76.5918, -1.9864, 10.7666



35.2436, 1.2454, 2.9632



29.3967, 50.3378, 18.9953



7.2203, 12.3600, 4.6655

Inverse Universe

The Inverse Universe completely reimagines the original color for something new.



78.9962, -11.8856, 1.7193



96.8727, -16.3830, 1.5019



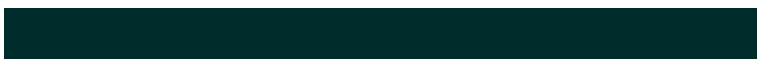
75.0975, -5.6427, -3.0009



37.5600, -4.9371, 1.0570



56.5633, -29.9815, -5.9777



13.8918, -7.3637, -1.4676

Previews

White Background



This preview shows how the HunterLab color 72.8873, 4.4265, 6.7471 looks on a white background.

Color Contrast Check

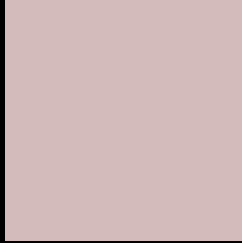
Large Text (above 18pt) WCAG AA × Fail

Any Text WCAG AA × Fail

Large Text (above 18pt) WCAG AAA × Fail

Any Text WCAG AAA × Fail

Black Background



This preview shows how the HunterLab color 72.8873, 4.4265, 6.7471 looks on a black background.

Color Contrast Check

Large Text (above 18pt) WCAG AA ✓ Pass

Any Text WCAG AA ✓ Pass

Large Text (above 18pt) WCAG AAA ✓ Pass

Any Text WCAG AAA ✓ Pass

If you want to check with other color combinations, try the [Color Contrast Checker](#).

HunterLab 72.8873, 4.4265, 6.7471 Background



This preview shows how black text looks on a background with the HunterLab color 72.8873, 4.4265, 6.7471.



This preview shows how white text looks on a background with the HunterLab color 72.8873, 4.4265,

6.7471.

Color Blindness Simulation

Color vision deficiency is a very complex topic, and I could not describe the different causes any better than Wikipedia does, so if you want to learn more, you should check out their [article about color blindness](#).

Dichromacy



Original Color

72.8873, 4.4265, 6.7471

Protanopia

72.9981, -2.6228, 5.3681

Deuteranopia

72.8023, 5.6332, 6.6713



Tritanopia

72.9138, 8.2846, 0.6406

Trichromacy



Original Color

72.8873, 4.4265, 6.7471

Protanomaly

72.8406, -0.1504, 5.6936

Deuteranomaly

72.6992, 5.2878, 6.5474

Tritanomaly

72.9411, 6.5803, 3.0941

Monochromacy



Original Color

72.8873, 4.4265, 6.7471

Achromatopsia

73.4493, -3.9191, 3.9906

Achromatomaly

73.1031, -0.6609, 5.0576

CSS Examples

Text

The CSS property to change the color of the text to HunterLab 72.8873, 4.4265, 6.7471 is called "color". The color property can be set on classes, ids or directly on the HTML element.

This example shows how text in the color `rgb(212, 187, 187)` looks like.

```
.text, #text, p{  
    color:rgb(212, 187, 187)  
}
```

If you want to add a text shadow in that color use the text-shadow property, you can generate a text shadow directly with our [CSS Text Shadow Generator](#).

Here you see how black text with a 4 pixel rgb(212, 187, 187) colored shadow looks like.

```
.shadow{ text-shadow: 4px 4px 2px rgb(212, 187, 187) }
```

Border

The CSS property to change the border of an element to HunterLab 72.8873, 4.4265, 6.7471 is called "border". The border property can be set on classes, ids or directly on the HTML element.

This example shows the color as border, it can be applied via the CSS property "border" or "border-color".

```
.border, #border, table{ border:4px solid rgb(212, 187, 187) }
```


If only the border color should be changed use the property `border-color`.

```
.border{ border-color:rgb(212, 187, 187) }
```

If you want to add a box shadow in that color use:

Here you see how a box with a 4 pixel `rgb(212, 187, 187)` colored shadow looks like.

```
.boxshadow{ -moz-box-shadow:4px 4px 4px  
4px rgb(212, 187, 187); -webkit-box-  
shadow:4px 4px 4px 4px rgb(212, 187, 187);  
box-shadow:4px 4px 4px 4px rgb(212, 187,  
187) }
```

Background

The CSS property to change the background color of an element to HunterLab 72.8873, 4.4265, 6.7471 is called "background". The background property can be set on classes, ids or directly on the HTML element.

```
.background, #background, body{  
background: rgb(212, 187, 187) }
```

If only the background color should be changed can be used:

```
.background{ background-color: rgb(212,  
187, 187) }
```

This example shows the color as background, it is applied via the CSS property "background".

To optimize and compress your CSS code, you can use our [online CSS compressor and optimizer](#) based on csstidy. If you want to create a linear or radial gradient as background or border, check our [CSS Gradient Generator](#).

Hey! You found this booklet interesting? Support Converting Colors with the new Membership Option!

The pro membership hides all ads, plus gives you double the colors in the color bucket, and more awesome pro features!

[Learn more, Memberships starting at \\$2.50/m!](#)

**Follow me
on Twitter!**

@ConvertingColor