

Converting Colors

HunterLab(73.0140, 0.4801,
15.7431)

Have a look what the booklet for
HunterLab(73.0140, 0.4801,
15.7431) contains.

HunterLab(73.0031, 0.6641, 15.6961)	3
<i>Conversions</i>	4
<i>Details</i>	6
<i>Harmonies</i>	12
<i>Previews</i>	24
<i>Color Blindness Simulation</i>	28
<i>CSS Examples</i>	31

Color

**HunterLab(73.0031, 0.6641,
15.6961)**

Conversions

Conversions Part 1

Format	Color
Hex	D5BDA6
RGB	213, 189, 166
RGB Percent	84%, 74%, 65%
CMY	0.1647, 0.2588, 0.3490
CMYK	0.00, 0.11, 0.22, 0.16
HSL	29°, 36%, 74%
HSV	29°, 22%, 84%
XYZ	52.5211, 53.2945, 43.5951
YIQ	193.5540, 21.6870, -2.0650

Conversions

Conversions Part 2

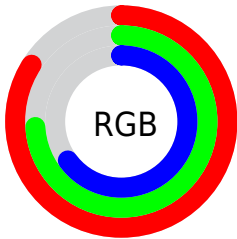
Format	Color
R _Y B	213, 211, 166
Decimal	14007718
CIE Lab	78.05, 4.92, 14.75
CIE LCh	78, 15.543, 71.561
Yxy	53.2969, 0.3515, 0.3567
Android (android.graphics.Color)	4292197798 (0xFFD5BDA6)
YUV	193.5540, -13.5841, 17.0541
Hunter-Lab	73.0031, 0.6641, 15.6961

Details

The HunterLab color $73.0031, 0.6641, 15.6961$ is a light color, and the websafe version is hex `CCCCCC`. A complement of this color would be $70.5243, -6.6118, -9.5823$, and the grayscale version is $73.3109, -3.9117, 3.9831$.

A 20% lighter version of the original color is $95.8046, -5.6678, 16.6008$, and $51.0806, 1.2624, 13.0197$ is the 20% darker color. If you saturate the color by 10%, you get $69.3355, 3.4586, 19.9809$, and if you desaturate by 10%, it is $76.8115, -1.7985, 10.8792$.

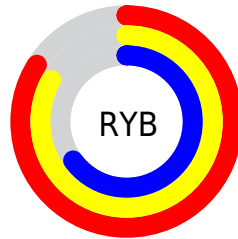
Distribution



Red (84%)

Green (74%)

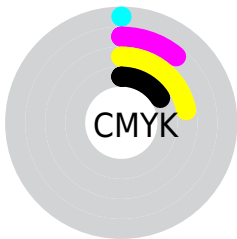
Blue (65%)



Red (84%)

Yellow (83%)

Blue (65%)

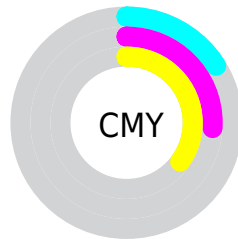


Cyan (0%)

Magenta (11%)

Yellow (22%)

Black (16%)



Cyan (16%)

Magenta (26%)

Yellow (35%)

Brightness & Saturation Gradients

These gradients show how the HunterLab color 73.0031, 0.6641, 15.6961 changes by changing the brightness by 10 percent. The first figure shows a shift by +10% for each color and the second figure -10%.

Similar to the brightness gradients but the following saturation gradients show a change of the HunterLab color 73.0031, 0.6641, 15.6961 by changing the saturation by 10% instead.

73.0031, 0.6641,
15.6961

73.0031, 0.6641,
15.6961

199.8558, -4.3317,
28.0416

61.6765, 1.0237,
14.3167

97.4891, -0.1950,
18.4296

51.0036, 1.3362,
12.9177

110.5880, -0.6837,
19.7909

41.0291, 1.5939,
11.4898

124.2262, -1.2094,
21.1530

31.8058, 1.7899,
10.0171

138.3830, -1.7701,
22.5183

23.4009, 1.9146,
8.4750

153.0402, -2.3641,
23.8885

15.9033, 1.9538,
6.8213

168.1811, -2.9899,

9.4403, 1.8842,

25.2651

6.6082

183.7909, -3.6461,
26.6492

0.0000, NaN, NaN

0.0000, NaN, NaN

■ 73.0031, 0.6641,
15.6961

■ 73.0031, 0.6641,
15.6961

■ 69.3355, 3.4586,
19.9809

■ 76.8115, -1.7985,
10.8792

■ 65.8162, 6.6133,
23.6717

■ 80.7445, -3.9458,
5.5813

■ 62.4601, 10.1422,
26.7078

■ 84.7937, -5.8041,
-0.1476

■ 59.2818, 14.0534,
29.0285

■ 88.9502, -7.3971,
-6.2641

■ 56.2962, 18.3418,

■ 92.5712, -12.2622,

30.5807

-3.7670

■ 53.5182, 22.9828,
31.3296

■ 96.1305, -17.7994,
0.5728

■ 50.9612, 27.9231,
31.2786

■ 96.3775, -18.1768,
0.8679

■ 49.0897, 31.9663,
30.8085

Harmonies

Analogous

The Analogous color harmony consists of three colors that are next to each other on the color wheel.



73.0047, 7.0697, 12.4054



73.0031, 0.6641, 15.6961



73.0047, -6.7327, 16.0437

Triad

The Triadic color harmony groups three colors that are evenly spaced from another and form a triangle on the color wheel.



73.0047, 0.6618, 15.6971



73.0047, -17.3394, 1.2051



73.0047, 5.7950, -6.9117

Complementary

The Complementary color scheme is a pair of colors which are on the opposite of each other on the color wheel.



73.0031, 0.6641, 15.6961



70.5243, -6.6118, -9.5823

Split Complementary

Split-complementary colors differ from the complementary color scheme. The scheme consists of three colors, the original color and two neighbors of the complement color.



73.0047, -1.0219, -10.5899



73.0031, 0.6641, 15.6961



73.0047, -14.2566, -5.6012

Square

The Square scheme is like the rectangle color scheme, but the four colors are evenly spaced on the color wheel.



73.0047, 0.6618, 15.6971



73.0047, -16.9292, 8.1318



73.0047, -8.3510, -10.0877



73.0047, 10.1139, -0.4440

Rectangle

The Rectangle color scheme consists of four colors that form a rectangle on the color wheel.



73.0031, 0.6641, 15.6961



73.0047, -11.2076, 14.6044



73.0047, -8.3510, -10.0877



73.0047, 3.7084, -8.5431

Sweetspot

The Sweet Spot groups the original color and five complimentary colors.



73.0047, 0.6618, 15.6971



96.5535, -3.5654, 10.1636



67.1933, 16.3071, -1.4396



44.5342, -1.5750, 4.8850

0.0000, NaN, NaN



46.2646, -2.4686, 2.5136

Same Dimension

The Same Dimension uses a secret algorithm to generate beautiful new colors.



73.0047, 0.6618, 15.6971



87.5863, 2.2002, 21.5340



80.0594, -10.9623, 22.4225



36.6255, -1.1269, 4.4816



38.6308, 24.3616, 24.2306



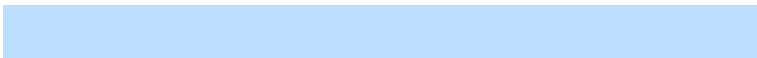
10.3226, 4.1245, 6.4329

Inverse Universe

The Inverse Universe completely reimagines the original color for something new.



70.5243, -6.6118, -9.5823



83.9853, -8.3377, -15.1836



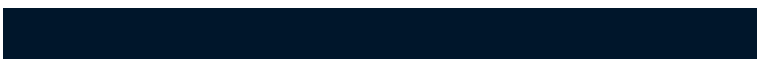
63.6160, 5.1613, -19.3802



36.1199, -2.6149, -0.6669



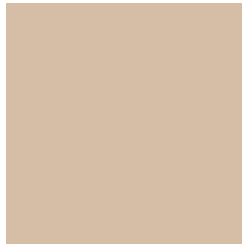
31.2854, 6.6592, -53.4794



8.6942, -0.1873, -10.4626

Previews

White Background



This preview shows how the HunterLab color 73.0031, 0.6641, 15.6961 looks on a white background.

Color Contrast Check

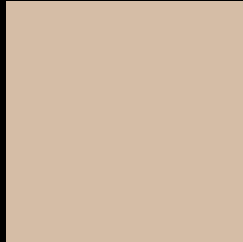
Large Text (above 18pt) WCAG AA × Fail

Any Text WCAG AA × Fail

Large Text (above 18pt) WCAG AAA × Fail

Any Text WCAG AAA × Fail

Black Background



This preview shows how the HunterLab color 73.0031, 0.6641, 15.6961 looks on a black background.

Color Contrast Check

Large Text (above 18pt) WCAG AA ✓ Pass

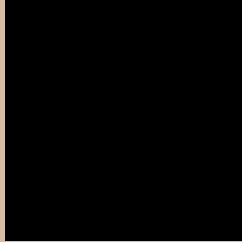
Any Text WCAG AA ✓ Pass

Large Text (above 18pt) WCAG AAA ✓ Pass

Any Text WCAG AAA ✓ Pass

If you want to check with other color combinations, try the [Color Contrast Checker](#).

HunterLab 73.0031, 0.6641, 15.6961 Background



This preview shows how black text looks on a background with the HunterLab color 73.0031, 0.6641, 15.6961.



This preview shows how white text looks on a background with the HunterLab color 73.0031, 0.6641,

Color Blindness Simulation

Color vision deficiency is a very complex topic, and I could not describe the different causes any better than Wikipedia does, so if you want to learn more, you should check out their [article about color blindness](#).

Dichromacy



Original Color

73.0031, 0.6641, 15.6961

Protanopia

73.1599, -4.8289, 14.9737

Deuteranopia

72.9931, 5.1781, 15.3728



Tritanopia

72.9083, 9.6722, 1.1549

Trichromacy



Original Color

73.0031, 0.6641, 15.6961

Protanomaly

73.2196, -3.1244, 15.4588

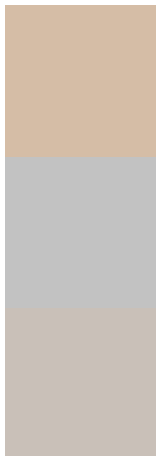
Deuteranomaly

72.9631, 3.5879, 15.3142

Tritanomaly

73.0100, 6.3274, 6.9203

Monochromacy



Original Color

73.0031, 0.6641, 15.6961

Achromatopsia

73.4493, -3.9191, 3.9906

Achromatomaly

73.1966, -2.2879, 8.3315

CSS Examples

Text

The CSS property to change the color of the text to HunterLab 73.0031, 0.6641, 15.6961 is called "color". The color property can be set on classes, ids or directly on the HTML element.

This example shows how text in the color `rgb(213, 189, 166)` looks like.

```
.text, #text, p{  
    color:rgb(213, 189, 166)  
}
```

If you want to add a text shadow in that color use the text-shadow property, you can generate a text shadow directly with our [CSS Text Shadow Generator](#).

Here you see how black text with a 4 pixel rgb(213, 189, 166) colored shadow looks like.

```
.shadow{ text-shadow: 4px 4px 2px rgb(213, 189, 166) }
```

Border

The CSS property to change the border of an element to HunterLab 73.0031, 0.6641, 15.6961 is called "border". The border property can be set on classes, ids or directly on the HTML element.

This example shows the color as border, it can be applied via the CSS property "border" or "border-color".

```
.border, #border, table{ border:4px solid rgb(213, 189, 166) }
```


If only the border color should be changed use the property `border-color`.

```
.border{ border-color:rgb(213, 189, 166) }
```

If you want to add a box shadow in that color use:

Here you see how a box with a 4 pixel `rgb(213, 189, 166)` colored shadow looks like.

```
.boxshadow{ -moz-box-shadow:4px 4px 4px  
4px rgb(213, 189, 166); -webkit-box-  
shadow:4px 4px 4px 4px rgb(213, 189, 166);  
box-shadow:4px 4px 4px 4px rgb(213, 189,  
166) }
```

Background

The CSS property to change the background color of an element to HunterLab 73.0031, 0.6641, 15.6961 is called "background". The background property can be set on classes, ids or directly on the HTML element.

```
.background, #background, body{  
background: rgb(213, 189, 166) }
```

If only the background color should be changed can be used:

```
.background{ background-color: rgb(213,  
189, 166) }
```

This example shows the color as background, it is applied via the CSS property "background".

To optimize and compress your CSS code, you can use our [online CSS compressor and optimizer](#) based on csstidy. If you want to create a linear or radial gradient as background or border, check our [CSS Gradient Generator](#).

Hey! You found this booklet interesting? Support Converting Colors with the new Membership Option!

The pro membership hides all ads, plus gives you double the colors in the color bucket, and more awesome pro features!

[Learn more, Memberships starting at \\$2.50/m!](#)

**Follow me
on Twitter!**

@ConvertingColor