

Converting Colors

HunterLab(73.0168, 3.4507,
3.3410)

Have a look what the booklet for
HunterLab(73.0168, 3.4507, 3.3410)
contains.

HunterLab(72.9191, 3.5159, 3.0142)	3
<i>Conversions</i>	4
<i>Details</i>	6
<i>Harmonies</i>	12
<i>Previews</i>	24
<i>Color Blindness Simulation</i>	28
<i>CSS Examples</i>	31

Color

**HunterLab(72.9191, 3.5159,
3.0142)**

Conversions

Conversions Part 1

Format	Color
Hex	CFBCC3
RGB	207, 188, 195
RGB Percent	81%, 74%, 76%
CMY	0.1882, 0.2627, 0.2353
CMYK	0.00, 0.09, 0.06, 0.19
HSL	338°, 17%, 77%
HSV	338°, 9%, 81%
XYZ	53.5656, 53.1720, 59.0697
YIQ	194.4790, 9.0770, 6.2050

Conversions

Conversions Part 2

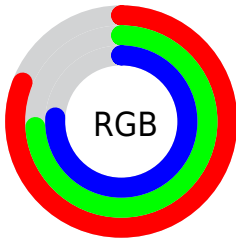
Format	Color
R _Y B	207, 188, 195
Decimal	13614275
CIE Lab	77.98, 7.93, -1.09
CIE LCh	78, 8.004, 352.194
Yxy	53.1743, 0.3231, 0.3207
Android (android.graphics.Color)	4291804355 (0xFFCFBCC3)
YUV	194.4790, 0.2569, 10.9809
Hunter-Lab	72.9191, 3.5159, 3.0142

Details

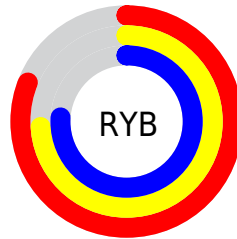
The HunterLab color $72.9191, 3.5159, 3.0142$ is a light color, and the websafe version is hex `CCCCCC`. A complement of this color would be $77.1288, -11.2079, 5.3227$, and the grayscale version is $73.6499, -3.9298, 4.0015$.

A 20% lighter version of the original color is $96.4311, -0.0092, 2.7960$, and $51.0131, 3.8332, 2.2132$ is the 20% darker color. If you saturate the color by 10%, you get $66.6251, 12.1207, 1.9189$, and if you desaturate by 10%, it is $79.5486, -4.9000, 4.4172$.

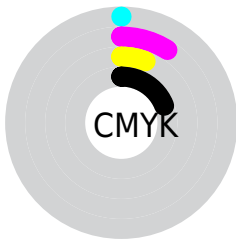
Distribution



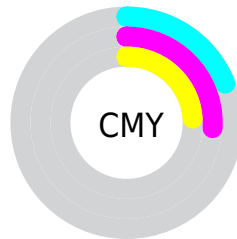
- Red (81%)
- Green (74%)
- Blue (76%)



- Red (81%)
- Yellow (74%)
- Blue (76%)



- Cyan (0%)
- Magenta (9%)
- Yellow (6%)
- Black (19%)



- Cyan (19%)
- Magenta (26%)
- Yellow (24%)

Brightness & Saturation Gradients

These gradients show how the HunterLab color 72.9191, 3.5159, 3.0142 changes by changing the brightness by 10 percent. The first figure shows a shift by +10% for each color and the second figure -10%.

Similar to the brightness gradients but the following saturation gradients show a change of the HunterLab color 72.9191, 3.5159, 3.0142 by changing the saturation by 10% instead.

■ 72.9191, 3.5159,
3.0142

■ 72.9191, 3.5159,
3.0142

199.7382, -0.4005,
9.5421

■ 61.5970, 3.7297,
2.4505

■ 97.3965, 2.9292,
4.2524

■ 50.9290, 3.8877,
1.9244

110.4915, 2.5680,
4.9206

■ 40.9597, 3.9811,
1.4401

124.1258, 2.1650,
5.6199

■ 31.7421, 4.0008,
1.0013

138.2790, 1.7228,
6.3490

■ 23.3433, 3.9342,
0.6132

152.9326, 1.2433,
7.1068

■ 15.8528, 3.7628,
0.2826

168.0701, 0.7286,

■ 9.3978, 3.4567,

7.8922

0.0203

183.6765, 0.1801,
8.7042

0.0000, NaN, NaN

0.0000, NaN, NaN

■ 72.9191, 3.5159,
3.0142

■ 72.9191, 3.5159,
3.0142

■ 66.6251, 12.1207,
1.9189

■ 79.5486, -4.9000,
4.4172

■ 60.7200, 20.8891,
1.2015

■ 86.4623, -13.1216,
6.0657

■ 55.2770, 29.7287,
0.9542

■ 93.6247, -21.1667,
7.9157

■ 50.3829, 38.4512,
1.2799

■ 95.6660, -21.2656,
3.8868

■ 46.1371, 46.7245,

■ 95.9195, -19.8359,

2.2791

0.2787

■ 42.6427, 54.0470,
4.0176

■ 39.9870, 59.7981,
6.4772

■ 38.2097, 63.4204,
9.5096

■ 37.2060, 64.9129,
12.7806

Harmonies

Analogous

The Analogous color harmony consists of three colors that are next to each other on the color wheel.



72.9207, 1.9903, -0.4378



72.9191, 3.5159, 3.0142



72.9207, 3.0204, 6.5556

Triad

The Triadic color harmony groups three colors that are evenly spaced from another and form a triangle on the color wheel.



72.9207, 3.5139, 3.0154



72.9207, -6.6444, 10.1376



72.9207, -8.3359, -1.7605

Complementary

The Complementary color scheme is a pair of colors which are on the opposite of each other on the color wheel.



72.9191, 3.5159, 3.0142



77.1288, -11.2079, 5.3227

Split Complementary

Split-complementary colors differ from the complementary color scheme. The scheme consists of three colors, the original color and two neighbors of the complement color.



72.9207, -10.5615, 1.2846



72.9191, 3.5159, 3.0142



72.9207, -9.5989, 8.1174

Square

The Square scheme is like the rectangle color scheme, but the four colors are evenly spaced on the color wheel.



72.9207, 3.5139, 3.0154



72.9207, -2.8961, 10.5481



72.9207, -11.0190, 4.9104



72.9207, -4.8881, -3.2860

Rectangle

The Rectangle color scheme consists of four colors that form a rectangle on the color wheel.



72.9191, 3.5159, 3.0142



72.9207, 1.6183, 8.5010



72.9207, -11.0190, 4.9104



72.9207, -9.2488, -0.8734

Sweetspot

The Sweet Spot groups the original color and five complimentary colors.



72.9207, 3.5139, 3.0154



97.4210, -2.1217, 4.8664



72.6046, 3.2223, -3.4115



44.7552, -0.5824, 2.1837

0.0000, NaN, NaN



46.2646, -2.4686, 2.5136

Same Dimension

The Same Dimension uses a secret algorithm to generate beautiful new colors.



72.9207, 3.5139, 3.0154



90.7203, 6.5612, 3.5128



73.3617, 1.2344, 6.7734



34.4662, 1.7603, 1.4141



29.5050, 51.7064, 9.9322



7.0844, 12.6201, 0.7956

Inverse Universe

The Inverse Universe completely reimagines the original color for something new.



72.9207, 3.5139, 3.0154



90.7203, 6.5612, 3.5128



76.6530, -8.9001, 1.4169



34.4662, 1.7603, 1.4141



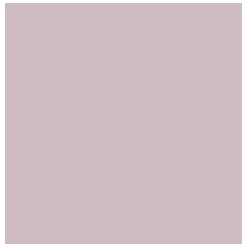
29.5050, 51.7064, 9.9322



7.0844, 12.6201, 0.7956

Previews

White Background



This preview shows how the HunterLab color 72.9191, 3.5159, 3.0142 looks on a white background.

Color Contrast Check

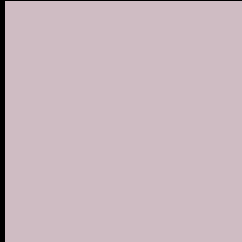
Large Text (above 18pt) WCAG AA × Fail

Any Text WCAG AA × Fail

Large Text (above 18pt) WCAG AAA × Fail

Any Text WCAG AAA × Fail

Black Background



This preview shows how the HunterLab color 72.9191, 3.5159, 3.0142 looks on a black background.

Color Contrast Check

Large Text (above 18pt) WCAG AA ✓ Pass

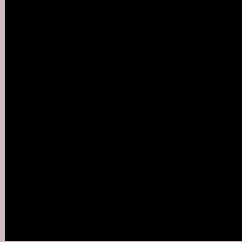
Any Text WCAG AA ✓ Pass

Large Text (above 18pt) WCAG AAA ✓ Pass

Any Text WCAG AAA ✓ Pass

If you want to check with other color combinations, try the [Color Contrast Checker](#).

HunterLab 72.9191, 3.5159, 3.0142 Background



This preview shows how black text looks on a background with the HunterLab color 72.9191, 3.5159, 3.0142.



This preview shows how white text looks on a background with the HunterLab color 72.9191, 3.5159,

Color Blindness Simulation

Color vision deficiency is a very complex topic, and I could not describe the different causes any better than Wikipedia does, so if you want to learn more, you should check out their [article about color blindness](#).

Dichromacy



Original Color

72.9191, 3.5159, 3.0142

Protanopia

73.0292, -2.0861, 2.0782

Deuteranopia

72.9263, 5.0407, 3.0494



Tritanopia

72.9485, 5.5595, -0.3671

Trichromacy



Original Color

72.9191, 3.5159, 3.0142

Protanomaly

73.0679, -0.4754, 2.6389

Deuteranomaly

72.8259, 4.7035, 2.9238

Tritanomaly

72.8519, 5.0428, 1.0051

Monochromacy



Original Color

72.9191, 3.5159, 3.0142

Achromatopsia

73.4493, -3.9191, 3.9906

Achromatomaly

73.3051, -1.3206, 3.8663

CSS Examples

Text

The CSS property to change the color of the text to HunterLab 72.9191, 3.5159, 3.0142 is called "color". The color property can be set on classes, ids or directly on the HTML element.

This example shows how text in the color `rgb(207, 188, 195)` looks like.

```
.text, #text, p{  
    color:rgb(207, 188, 195)  
}
```

If you want to add a text shadow in that color use the text-shadow property, you can generate a text shadow directly with our [CSS Text Shadow Generator](#).

Here you see how black text with a 4 pixel rgb(207, 188, 195) colored shadow looks like.

```
.shadow{ text-shadow: 4px 4px 2px rgb(207, 188, 195) }
```

Border

The CSS property to change the border of an element to HunterLab 72.9191, 3.5159, 3.0142 is called "border". The border property can be set on classes, ids or directly on the HTML element.

This example shows the color as border, it can be applied via the CSS property "border" or "border-color".

```
.border, #border, table{ border:4px solid rgb(207, 188, 195) }
```


If only the border color should be changed use the property `border-color`.

```
.border{ border-color:rgb(207, 188, 195) }
```

If you want to add a box shadow in that color use:

Here you see how a box with a 4 pixel `rgb(207, 188, 195)` colored shadow looks like.

```
.boxshadow{ -moz-box-shadow:4px 4px 4px  
4px rgb(207, 188, 195); -webkit-box-  
shadow:4px 4px 4px 4px rgb(207, 188, 195);  
box-shadow:4px 4px 4px 4px rgb(207, 188,  
195) }
```

Background

The CSS property to change the background color of an element to HunterLab 72.9191, 3.5159, 3.0142 is called "background". The background property can be set on classes, ids or directly on the HTML element.

```
.background, #background, body{  
background: rgb(207, 188, 195) }
```

If only the background color should be changed can be used:

```
.background{ background-color: rgb(207,  
188, 195) }
```

This example shows the color as background, it is applied via the CSS property "background".

To optimize and compress your CSS code, you can use our [online CSS compressor and optimizer](#) based on csstidy. If you want to create a linear or radial gradient as background or border, check our [CSS Gradient Generator](#).

Hey! You found this booklet interesting? Support Converting Colors with the new Membership Option!

The pro membership hides all ads, plus gives you double the colors in the color bucket, and more awesome pro features!

[Learn more, Memberships starting at \\$2.50/m!](#)

**Follow me
on Twitter!**

@ConvertingColor