

Converting Colors

HunterLab(73.0202, 5.5434,
1.7115)

Have a look what the booklet for
HunterLab(73.0202, 5.5434, 1.7115)
contains.

HunterLab(73.0202, 5.5434, 1.7115)	3
<i>Conversions</i>	4
<i>Details</i>	6
<i>Harmonies</i>	12
<i>Previews</i>	24
<i>Color Blindness Simulation</i>	28
<i>CSS Examples</i>	31

Color

**HunterLab(73.0202, 5.5434,
1.7115)**

Conversions

Conversions Part 1

Format	Color
Hex	D2BBC6
RGB	210, 187, 198
RGB Percent	82%, 73%, 78%
CMY	0.1765, 0.2666, 0.2235
CMYK	0.00, 0.11, 0.06, 0.18
HSL	331°, 20%, 78%
HSV	331°, 11%, 82%
XYZ	54.5417, 53.3195, 60.8432
YIQ	195.1310, 10.1770, 8.2970

Conversions

Conversions Part 2

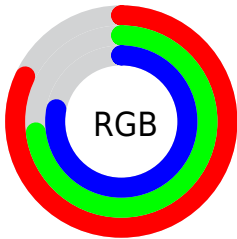
Format	Color
R _Y B	210, 187, 198
Decimal	13810630
CIE Lab	78.06, 10.05, -2.55
CIE LCh	78, 10.368, 345.742
Yxy	53.3218, 0.3233, 0.3161
Android (android.graphics.Color)	4292000710 (0xFFD2BBC6)
YUV	195.1310, 1.4144, 13.0401
Hunter-Lab	73.0202, 5.5434, 1.7115

Details

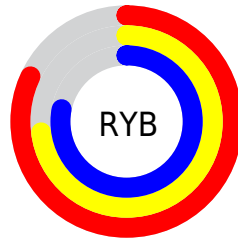
The HunterLab color $73.0202, 5.5434, 1.7115$ is a light color, and the websafe version is hex `CCCCCC`. A complement of this color would be $77.9634, -13.1422, 6.7172$, and the grayscale version is $73.9213, -3.9443, 4.0163$.

A 20% lighter version of the original color is $96.2191, 1.0662, 1.0114$, and $51.0219, 5.4394, 0.8734$ is the 20% darker color. If you saturate the color by 10%, you get $66.7576, 14.7012, -0.3832$, and if you desaturate by 10%, it is $79.6351, -3.4398, 4.1194$.

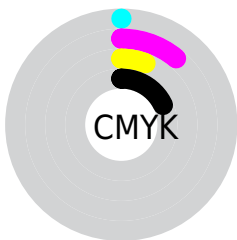
Distribution



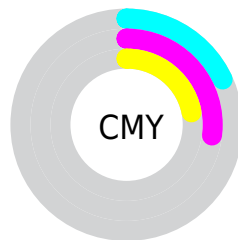
- Red (82%)
- Green (73%)
- Blue (78%)



- Red (82%)
- Yellow (73%)
- Blue (78%)



- Cyan (0%)
- Magenta (11%)
- Yellow (6%)
- Black (18%)



- Cyan (18%)
- Magenta (27%)
- Yellow (22%)

Brightness & Saturation Gradients

These gradients show how the HunterLab color 73.0202, 5.5434, 1.7115 changes by changing the brightness by 10 percent. The first figure shows a shift by +10% for each color and the second figure -10%.

Similar to the brightness gradients but the following saturation gradients show a change of the HunterLab color 73.0202, 5.5434, 1.7115 by changing the saturation by 10% instead.

■ 73.0202, 5.5434,
1.7115

■ 73.0202, 5.5434,
1.7115

199.8796, 2.3735,
7.7400

■ 61.6926, 5.6567,
1.2157

■ 97.5078, 5.1442,
2.8236

■ 51.0187, 5.7087,
0.7614

110.6076, 4.8712,
3.4327

■ 41.0431, 5.6897,
0.3536

124.2465, 4.5531,
4.0752

■ 31.8187, 5.5894,
-0.0029

138.4041, 4.1928,
4.7495

■ 23.4125, 5.3935,
-0.3015

153.0620, 3.7927,
5.4543

■ 15.9136, 5.0813,
-0.5329

168.2037, 3.3550,

■ 9.4489, 4.6204,

6.1883

-0.6827

183.8141, 2.8813,
6.9505

0.0000, INF, NaN

0.0000, NaN, NaN

■ 73.0202, 5.5434,
1.7115

■ 73.0202, 5.5434,
1.7115

■ 66.7576, 14.7012,
-0.3832

■ 79.6351, -3.4398,
4.1194

■ 60.9032, 23.9891,
-2.0810

■ 86.5484, -12.2317,
6.7709

■ 55.5333, 33.2844,
-3.2679

■ 93.7224, -20.8441,
9.6181

■ 50.7365, 42.3552,
-3.8069

■ 95.7197, -21.4182,
6.6546

■ 46.6118, 50.8158,

■ 96.0731, -19.4258,

-3.5497

1.6174

■ 43.2581, 58.1165,
-2.3715

■ 96.1467, -19.0120,
0.5713

■ 40.7521, 63.6220,
-0.2305

■ 39.1162, 66.8235,
2.7675

■ 38.2492, 67.9297,
5.9040

Harmonies

Analogous

The Analogous color harmony consists of three colors that are next to each other on the color wheel.



73.0218, 3.0321, -2.6206



73.0202, 5.5434, 1.7115



73.0218, 5.4745, 6.3853

Triad

The Triadic color harmony groups three colors that are evenly spaced from another and form a triangle on the color wheel.



73.0218, 5.5414, 1.7128



73.0218, -6.4608, 12.1523



73.0218, -10.4154, -2.8014

Complementary

The Complementary color scheme is a pair of colors which are on the opposite of each other on the color wheel.



73.0202, 5.5434, 1.7115



77.9634, -13.1422, 6.7172

Split Complementary

Split-complementary colors differ from the complementary color scheme. The scheme consists of three colors, the original color and two neighbors of the complement color.



73.0218, -12.8246, 1.4791



73.0202, 5.5434, 1.7115



73.0218, -10.5832, 10.0071

Square

The Square scheme is like the rectangle color scheme, but the four colors are evenly spaced on the color wheel.



73.0218, 5.5414, 1.7128



73.0218, -1.5446, 12.2056



73.0218, -12.8852, 6.1667



73.0218, -6.2263, -5.3419

Rectangle

The Rectangle color scheme consists of four colors that form a rectangle on the color wheel.



73.0202, 5.5434, 1.7115



73.0218, 3.9752, 9.0612



73.0218, -12.8852, 6.1667



73.0218, -11.4553, -1.5061

Sweetspot

The Sweet Spot groups the original color and five complimentary colors.



73.0218, 5.5414, 1.7128



97.4481, -1.9739, 4.4793



72.3343, 4.0243, -5.3354



44.7712, -0.4958, 1.9566

0.0000, NaN, NaN



46.2646, -2.4686, 2.5136

Same Dimension

The Same Dimension uses a secret algorithm to generate beautiful new colors.



73.0218, 5.5414, 1.7128



89.2067, 9.3890, 1.5240



72.7980, 3.5438, 6.6274



34.4979, 1.9304, 0.9629



29.9067, 53.1764, 4.1288



7.1840, 12.9817, -0.6212

Inverse Universe

The Inverse Universe completely reimagines the original color for something new.



73.0218, 5.5414, 1.7128



89.2067, 9.3890, 1.5240



78.1814, -11.0613, 1.7412



34.4979, 1.9304, 0.9629



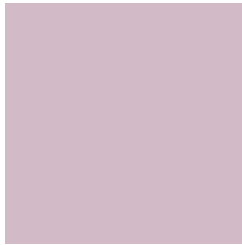
29.9067, 53.1764, 4.1288



7.1840, 12.9817, -0.6212

Previews

White Background



This preview shows how the HunterLab color 73.0202, 5.5434, 1.7115 looks on a white background.

Color Contrast Check

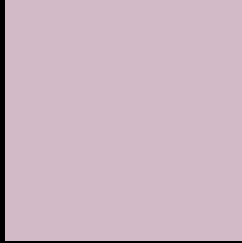
Large Text (above 18pt) WCAG AA × Fail

Any Text WCAG AA × Fail

Large Text (above 18pt) WCAG AAA × Fail

Any Text WCAG AAA × Fail

Black Background



This preview shows how the HunterLab color 73.0202, 5.5434, 1.7115 looks on a black background.

Color Contrast Check

Large Text (above 18pt) WCAG AA ✓ Pass

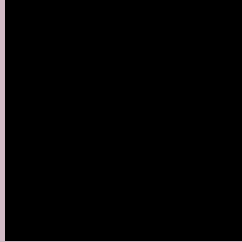
Any Text WCAG AA ✓ Pass

Large Text (above 18pt) WCAG AAA ✓ Pass

Any Text WCAG AAA ✓ Pass

If you want to check with other color combinations, try the [Color Contrast Checker](#).

HunterLab 73.0202, 5.5434, 1.7115 Background



This preview shows how black text looks on a background with the HunterLab color 73.0202, 5.5434, 1.7115.



This preview shows how white text looks on a background with the HunterLab color 73.0202, 5.5434,

1.7115.

Color Blindness Simulation

Color vision deficiency is a very complex topic, and I could not describe the different causes any better than Wikipedia does, so if you want to learn more, you should check out their [article about color blindness](#).

Dichromacy



Original Color

73.0202, 5.5434, 1.7115

Protanopia

73.0655, -1.7064, 0.1526

Deuteranopia

73.0202, 5.5434, 1.7115



Tritanopia

73.1159, 6.0549, 0.3504

Trichromacy



Original Color

73.0202, 5.5434, 1.7115

Protanomaly

72.9907, 1.0428, 0.6080

Deuteranomaly

73.0202, 5.5434, 1.7115

Tritanomaly

73.0838, 5.8834, 0.8067

Monochromacy



Original Color

73.0202, 5.5434, 1.7115

Achromatopsia

73.8732, -3.9417, 4.0137

Achromatomaly

73.4603, -0.6638, 3.1037

CSS Examples

Text

The CSS property to change the color of the text to HunterLab 73.0202, 5.5434, 1.7115 is called "color". The color property can be set on classes, ids or directly on the HTML element.

This example shows how text in the color `rgb(210, 187, 198)` looks like.

```
.text, #text, p{  
    color:rgb(210, 187, 198)  
}
```

If you want to add a text shadow in that color use the text-shadow property, you can generate a text shadow directly with our [CSS Text Shadow Generator](#).

Here you see how black text with a 4 pixel rgb(210, 187, 198) colored shadow looks like.

```
.shadow{ text-shadow: 4px 4px 2px rgb(210, 187, 198) }
```

Border

The CSS property to change the border of an element to HunterLab 73.0202, 5.5434, 1.7115 is called "border".

The border property can be set on classes, ids or directly on the HTML element.

This example shows the color as border, it can be applied via the CSS property "border" or "border-color".

```
.border, #border, table{ border:4px solid rgb(210, 187, 198) }
```


If only the border color should be changed use the property `border-color`.

```
.border{ border-color:rgb(210, 187, 198) }
```

If you want to add a box shadow in that color use:

Here you see how a box with a 4 pixel `rgb(210, 187, 198)` colored shadow looks like.

```
.boxshadow{ -moz-box-shadow:4px 4px 4px  
4px rgb(210, 187, 198); -webkit-box-  
shadow:4px 4px 4px 4px rgb(210, 187, 198);  
box-shadow:4px 4px 4px 4px rgb(210, 187,  
198) }
```

Background

The CSS property to change the background color of an element to HunterLab 73.0202, 5.5434, 1.7115 is called "background". The background property can be set on classes, ids or directly on the HTML element.

```
.background, #background, body{  
background: rgb(210, 187, 198) }
```

If only the background color should be changed can be used:

```
.background{ background-color: rgb(210,  
187, 198) }
```

This example shows the color as background, it is applied via the CSS property "background".

To optimize and compress your CSS code, you can use our [online CSS compressor and optimizer](#) based on csstidy. If you want to create a linear or radial gradient as background or border, check our [CSS Gradient Generator](#).

Hey! You found this booklet interesting? Support Converting Colors with the new Membership Option!

The pro membership hides all ads, plus gives you double the colors in the color bucket, and more awesome pro features!

[Learn more, Memberships starting at \\$2.50/m!](#)

**Follow me
on Twitter!**

@ConvertingColor