

Converting Colors

HunterLab(73.0947, 4.3290,
16.4144)

Have a look what the booklet for
HunterLab(73.0947, 4.3290,
16.4144) contains.

HunterLab(73.2321, 4.3942, 16.3820)	3
<i>Conversions</i>	4
<i>Details</i>	6
<i>Harmonies</i>	12
<i>Previews</i>	24
<i>Color Blindness Simulation</i>	28
<i>CSS Examples</i>	31

Color

**HunterLab(73.2321, 4.3942,
16.3820)**

Conversions

Conversions Part 1

Format	Color
Hex	DDBBA5
RGB	221, 187, 165
RGB Percent	87%, 73%, 65%
CMY	0.1333, 0.2666, 0.3529
CMYK	0.00, 0.15, 0.25, 0.13
HSL	24°, 45%, 76%
HSV	24°, 25%, 87%
XYZ	54.3806, 53.6294, 43.0826
YIQ	194.6580, 27.3260, 0.3660

Conversions

Conversions Part 2

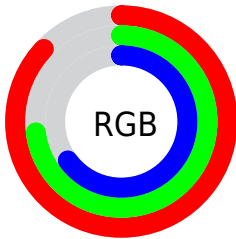
Format	Color
R_{YB}	221, 201, 165
Decimal	14531493
CIE _{Lab}	78.25, 8.85, 15.66
CIE _{LCh}	78, 17.994, 60.521
Yxy	53.6319, 0.3599, 0.3549
Android (android.graphics.Color)	4292721573 (0xFFDDBBA5)
YUV	194.6580, -14.6214, 23.1019
Hunter-Lab	73.2321, 4.3942, 16.3820

Details

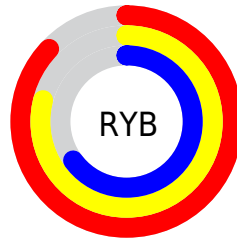
The HunterLab color $73.2321, 4.3942, 16.3820$ is a light color, and the websafe version is hex `FFCCCC`. A complement of this color would be $73.5290, -9.7442, -10.0221$, and the grayscale version is $73.7814, -3.9368, 4.0087$.

A 20% lighter version of the original color is $95.1465, -4.7737, 16.3520$, and $51.2267, 4.5143, 13.5628$ is the 20% darker color. If you saturate the color by 10%, you get $68.8956, 8.5261, 20.2726$, and if you desaturate by 10%, it is $77.7615, 0.6165, 12.0376$.

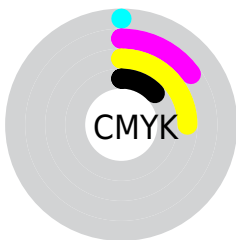
Distribution



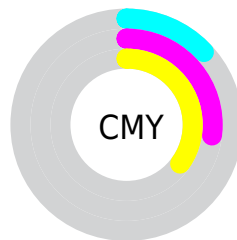
- Red (87%)
- Green (73%)
- Blue (65%)



- Red (87%)
- Yellow (79%)
- Blue (65%)



- Cyan (0%)
- Magenta (15%)
- Yellow (25%)
- Black (13%)



- Cyan (13%)
- Magenta (27%)
- Yellow (35%)

Brightness & Saturation Gradients

These gradients show how the HunterLab color 73.2321, 4.3942, 16.3820 changes by changing the brightness by 10 percent. The first figure shows a shift by +10% for each color and the second figure -10%.

Similar to the brightness gradients but the following saturation gradients show a change of the HunterLab color 73.2321, 4.3942, 16.3820 by changing the saturation by 10% instead.

73.2321, 4.3942,
16.3820

73.2321, 4.3942,
16.3820

200.1761, 0.7956,
29.0856

61.8930, 4.5647,
14.9518

97.7412, 3.8868,
19.2083

51.2068, 4.6777,
13.4982

110.8510, 3.5632,
20.6124

41.2181, 4.7235,
12.0111

124.4996, 3.1964,
22.0153

31.9795, 4.6924,
10.4733

138.6664, 2.7891,
23.4197

23.5577, 4.5712,
8.8585

153.3332, 2.3435,
24.8275

16.0413, 4.3405,
7.1218

168.4836, 1.8616,

9.5563, 3.9696,

26.2403

6.6894

184.1024, 1.3451,
27.6594

0.0000, INF, NaN

0.0000, NaN, NaN

■ 73.2321, 4.3942,
16.3820

■ 73.2321, 4.3942,
16.3820

■ 68.8956, 8.5261,
20.2726

■ 77.7615, 0.6165,
12.0376

■ 64.7685, 13.0406,
23.6376

■ 82.4601, -2.8258,
7.2958

■ 60.8764, 17.9451,
26.4019

■ 87.3132, -5.9638,
2.2087

■ 57.2460, 23.2308,
28.4857

■ 92.3066, -8.8259,
-3.1808

■ 53.9057, 28.8604,

■ 96.7111, -15.4273,

29.8148

1.3224

■ 50.8841, 34.7550,
30.3373

■ 97.0114, -15.8938,
1.6788

■ 48.2077, 40.7809,
30.0555

■ 47.0772, 43.5510,
29.7712

Harmonies

Analogous

The Analogous color harmony consists of three colors that are next to each other on the color wheel.



73.2338, 10.8608, 11.5224



73.2321, 4.3942, 16.3820



73.2338, -4.0615, 18.0166

Triad

The Triadic color harmony groups three colors that are evenly spaced from another and form a triangle on the color wheel.



73.2338, 4.3917, 16.3831



73.2338, -19.7006, 3.8434



73.2338, 4.6633, -10.8750

Complementary

The Complementary color scheme is a pair of colors which are on the opposite of each other on the color wheel.



73.2321, 4.3942, 16.3820



73.5290, -9.7442, -10.0221

Split Complementary

Split-complementary colors differ from the complementary color scheme. The scheme consists of three colors, the original color and two neighbors of the complement color.



73.2338, -3.7613, -13.5220



73.2321, 4.3942, 16.3820



73.2338, -17.5984, -4.4469

Square

The Square scheme is like the rectangle color scheme, but the four colors are evenly spaced on the color wheel.



73.2338, 4.3917, 16.3831



73.2338, -17.7372, 11.3017



73.2338, -11.8605, -11.0464



73.2338, 11.0226, -4.1714

Rectangle

The Rectangle color scheme consists of four colors that form a rectangle on the color wheel.



73.2321, 4.3942, 16.3820



73.2338, -9.6097, 17.2227



73.2338, -11.8605, -11.0464



73.2338, 1.9665, -12.3010

Sweetspot

The Sweet Spot groups the original color and five complimentary colors.



73.2338, 4.3917, 16.3831



95.4498, -2.2568, 10.1424



68.1406, 21.2822, -4.9376



43.7697, -0.7641, 5.0883

0.0000, NaN, NaN



46.2646, -2.4686, 2.5136

Same Dimension

The Same Dimension uses a secret algorithm to generate beautiful new colors.



73.2338, 4.3917, 16.3831



83.5940, 7.4935, 21.5807



81.4977, -9.5077, 24.1543



37.2648, -0.6740, 4.2947



36.1670, 32.4427, 22.8539



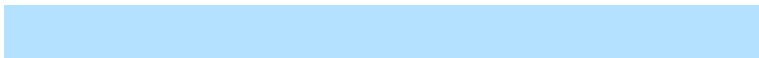
10.0613, 6.1501, 6.3074

Inverse Universe

The Inverse Universe completely reimagines the original color for something new.



73.5290, -9.7442, -10.0221



84.0014, -12.2073, -15.2286



65.2290, 4.1561, -21.9120



37.3175, -3.1560, -0.3397



36.3177, -1.3319, -42.5188



10.1022, -1.7197, -8.9146

Previews

White Background



This preview shows how the HunterLab color 73.2321, 4.3942, 16.3820 looks on a white background.

Color Contrast Check

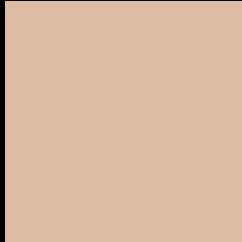
Large Text (above 18pt) WCAG AA × Fail

Any Text WCAG AA × Fail

Large Text (above 18pt) WCAG AAA × Fail

Any Text WCAG AAA × Fail

Black Background



This preview shows how the HunterLab color 73.2321, 4.3942, 16.3820 looks on a black background.

Color Contrast Check

Large Text (above 18pt) WCAG AA ✓ Pass

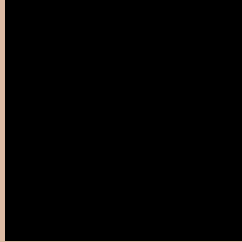
Any Text WCAG AA ✓ Pass

Large Text (above 18pt) WCAG AAA ✓ Pass

Any Text WCAG AAA ✓ Pass

If you want to check with other color combinations, try the [Color Contrast Checker](#).

HunterLab 73.2321, 4.3942, 16.3820 Background



This preview shows how black text looks on a background with the HunterLab color 73.2321, 4.3942, 16.3820.



This preview shows how white text looks on a background with the HunterLab color 73.2321, 4.3942,

Color Blindness Simulation

Color vision deficiency is a very complex topic, and I could not describe the different causes any better than Wikipedia does, so if you want to learn more, you should check out their [article about color blindness](#).

Dichromacy



Original Color

73.2321, 4.3942, 16.3820

Protanopia

73.2554, -4.4955, 15.0776

Deuteranopia

73.1590, 5.6335, 16.3299



Tritanopia

73.1400, 13.2071, 2.4792

Trichromacy



Original Color

73.2321, 4.3942, 16.3820

Protanomaly

73.3166, -1.2540, 15.5905

Deuteranomaly

73.0507, 5.2706, 16.2140

Tritanomaly

73.2332, 9.8921, 8.1391

Monochromacy



Original Color

73.2321, 4.3942, 16.3820

Achromatopsia

73.8732, -3.9417, 4.0137

Achromatomaly

73.4829, -1.3005, 8.6683

CSS Examples

Text

The CSS property to change the color of the text to HunterLab 73.2321, 4.3942, 16.3820 is called "color". The color property can be set on classes, ids or directly on the HTML element.

This example shows how text in the color `rgb(221, 187, 165)` looks like.

```
.text, #text, p{  
    color:rgb(221, 187, 165)  
}
```

If you want to add a text shadow in that color use the text-shadow property, you can generate a text shadow directly with our [CSS Text Shadow Generator](#).

Here you see how black text with a 4 pixel rgb(221, 187, 165) colored shadow looks like.

```
.shadow{ text-shadow: 4px 4px 2px rgb(221, 187, 165) }
```

Border

The CSS property to change the border of an element to HunterLab 73.2321, 4.3942, 16.3820 is called "border". The border property can be set on classes, ids or directly on the HTML element.

This example shows the color as border, it can be applied via the CSS property "border" or "border-color".

```
.border, #border, table{ border:4px solid rgb(221, 187, 165) }
```


If only the border color should be changed use the property `border-color`.

```
.border{ border-color:rgb(221, 187, 165) }
```

If you want to add a box shadow in that color use:

Here you see how a box with a 4 pixel `rgb(221, 187, 165)` colored shadow looks like.

```
.boxshadow{ -moz-box-shadow:4px 4px 4px  
4px rgb(221, 187, 165); -webkit-box-  
shadow:4px 4px 4px 4px rgb(221, 187, 165);  
box-shadow:4px 4px 4px 4px rgb(221, 187,  
165) }
```

Background

The CSS property to change the background color of an element to HunterLab 73.2321, 4.3942, 16.3820 is called "background". The background property can be set on classes, ids or directly on the HTML element.

```
.background, #background, body{  
background: rgb(221, 187, 165) }
```

If only the background color should be changed can be used:

```
.background{ background-color: rgb(221,  
187, 165) }
```

This example shows the color as background, it is applied via the CSS property "background".

To optimize and compress your CSS code, you can use our [online CSS compressor and optimizer](#) based on csstidy. If you want to create a linear or radial gradient as background or border, check our [CSS Gradient Generator](#).

Hey! You found this booklet interesting? Support Converting Colors with the new Membership Option!

The pro membership hides all ads, plus gives you double the colors in the color bucket, and more awesome pro features!

[Learn more, Memberships starting at \\$2.50/m!](#)

**Follow me
on Twitter!**

@ConvertingColor