

Converting Colors

HunterLab(73.2201, 7.4473,
3.9194)

Have a look what the booklet for
HunterLab(73.2201, 7.4473, 3.9194)
contains.

HunterLab(73.2201, 7.4473, 3.9194)	3
<i>Conversions</i>	4
<i>Details</i>	6
<i>Harmonies</i>	12
<i>Previews</i>	24
<i>Color Blindness Simulation</i>	28
<i>CSS Examples</i>	31

Color

**HunterLab(73.2201, 7.4473,
3.9194)**

Conversions

Conversions Part 1

Format	Color
Hex	D8BAC2
RGB	216, 186, 194
RGB Percent	85%, 73%, 76%
CMY	0.1529, 0.2706, 0.2392
CMYK	0.00, 0.14, 0.10, 0.15
HSL	344°, 28%, 79%
HSV	344°, 14%, 85%
XYZ	55.6155, 53.6118, 58.4559
YIQ	195.8820, 15.3120, 8.8480

Conversions

Conversions Part 2

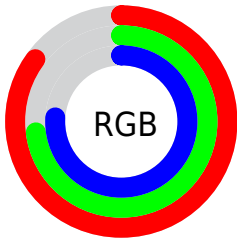
Format	Color
RYB	216, 186, 194
Decimal	14203586
CIELab	78.24, 12.02, -0.07
CIELCh	78, 12.018, 359.645
Yxy	53.6142, 0.3317, 0.3197
Android (android.graphics.Color)	4292393666 (0xFFD8BAC2)
YUV	195.8820, -0.9278, 17.6435
Hunter-Lab	73.2201, 7.4473, 3.9194

Details

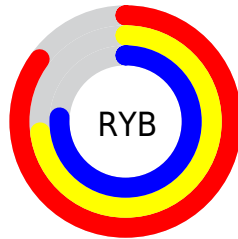
The HunterLab color $73.2201, 7.4473, 3.9194$ is a light color, and the websafe version is hex FFCCCC . A complement of this color would be $80.0664, -14.8400, 4.8849$, and the grayscale version is $74.2480, -3.9617, 4.0340$.

A 20% lighter version of the original color is $95.7426, 0.7056, 3.0006$, and $51.2304, 7.2756, 2.9811$ is the 20% darker color. If you saturate the color by 10%, you get $66.7203, 16.2556, 3.8939$, and if you desaturate by 10%, it is $80.1024, -1.1443, 4.2837$.

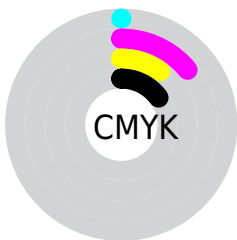
Distribution



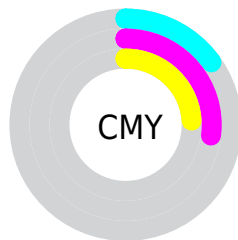
- Red (85%)
- Green (73%)
- Blue (76%)



- Red (85%)
- Yellow (73%)
- Blue (76%)



- Cyan (0%)
- Magenta (14%)
- Yellow (10%)
- Black (15%)



- Cyan (15%)
- Magenta (27%)
- Yellow (24%)

Brightness & Saturation Gradients

These gradients show how the HunterLab color 73.2201, 7.4473, 3.9194 changes by changing the brightness by 10 percent. The first figure shows a shift by +10% for each color and the second figure -10%.

Similar to the brightness gradients but the following saturation gradients show a change of the HunterLab color 73.2201, 7.4473, 3.9194 by changing the saturation by 10% instead.

73.2201, 7.4473,
3.9194

73.2201, 7.4473,
3.9194

200.1592, 4.9614,
10.8044

61.8816, 7.4688,
3.3069

97.7280, 7.2193,
5.2480

51.1961, 7.4245,
2.7291

110.8372, 7.0269,
5.9586

41.2082, 7.3036,
2.1894

124.4852, 6.7866,
6.6985

31.9703, 7.0950,
1.6909

138.6515, 6.5015,
7.4668

23.5494, 6.7831,
1.2373

153.3178, 6.1743,
8.2624

16.0340, 6.3458,
0.8336

168.4676, 5.8072,

9.5502, 5.7498,

9.0844

0.4868

184.0860, 5.4023,
9.9319

0.0000, INF, NaN

0.0000, NaN, NaN

■ 73.2201, 7.4473,
3.9194

■ 73.2201, 7.4473,
3.9194

■ 66.7203, 16.2556,
3.8939

■ 80.1024, -1.1443,
4.2837

■ 60.6675, 25.2402,
4.2739

■ 87.3070, -9.5087,
4.9232

■ 55.1487, 34.2747,
5.1374

■ 94.7916, -17.6648,
5.7905

■ 50.2659, 43.1083,
6.5540

■ 96.6122, -17.3299,
1.1687

■ 46.1319, 51.3159,

8.5595

■ 42.8564, 58.2953,
11.1152

■ 40.5165, 63.3791,
14.0683

■ 39.1160, 66.1058,
17.1481

■ 38.6010, 66.8857,
18.8937

Harmonies

Analogous

The Analogous color harmony consists of three colors that are next to each other on the color wheel.



73.2217, 5.8493, -1.5158



73.2201, 7.4473, 3.9194



73.2217, 5.9211, 8.9865

Triad

The Triadic color harmony groups three colors that are evenly spaced from another and form a triangle on the color wheel.



73.2217, 7.4451, 3.9207



73.2217, -9.2855, 12.5286



73.2217, -9.4004, -5.6558

Complementary

The Complementary color scheme is a pair of colors which are on the opposite of each other on the color wheel.



73.2201, 7.4473, 3.9194



80.0664, -14.8400, 4.8849

Split Complementary

Split-complementary colors differ from the complementary color scheme. The scheme consists of three colors, the original color and two neighbors of the complement color.



73.2217, -13.2499, -1.3948



73.2201, 7.4473, 3.9194



73.2217, -13.1851, 9.0909

Square

The Square scheme is like the rectangle color scheme, but the four colors are evenly spaced on the color wheel.



73.2217, 7.4451, 3.9207



73.2217, -3.8425, 13.7182



73.2217, -14.6144, 4.0506



73.2217, -3.9791, -7.2986

Rectangle

The Rectangle color scheme consists of four colors that form a rectangle on the color wheel.



73.2201, 7.4473, 3.9194



73.2217, 3.3668, 11.5370



73.2217, -14.6144, 4.0506



73.2217, -10.9150, -4.4668

Sweetspot

The Sweet Spot groups the original color and five complimentary colors.



73.2217, 7.4451, 3.9207



96.5357, -1.2267, 5.1601



73.1356, 8.6119, -7.4508



44.3636, -0.2077, 2.3663

0.0000, NaN, NaN



46.2646, -2.4686, 2.5136

Same Dimension

The Same Dimension uses a secret algorithm to generate beautiful new colors.



73.2217, 7.4451, 3.9207



85.7386, 12.4364, 4.6721



75.0242, 2.5481, 9.5600



35.3195, 1.6567, 1.8737



29.7234, 51.5538, 14.1554



7.3936, 13.0063, 2.1072

Inverse Universe

The Inverse Universe completely reimagines the original color for something new.



73.2217, 7.4451, 3.9207



85.7386, 12.4364, 4.6721



78.1022, -9.9573, -1.3663



35.3195, 1.6567, 1.8737



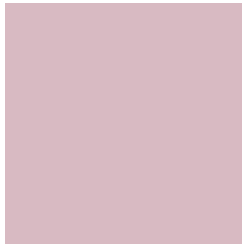
29.7234, 51.5538, 14.1554



7.3936, 13.0063, 2.1072

Previews

White Background



This preview shows how the HunterLab color 73.2201, 7.4473, 3.9194 looks on a white background.

Color Contrast Check

Large Text (above 18pt) WCAG AA × Fail

Any Text WCAG AA × Fail

Large Text (above 18pt) WCAG AAA × Fail

Any Text WCAG AAA × Fail

Black Background



This preview shows how the HunterLab color 73.2201, 7.4473, 3.9194 looks on a black background.

Color Contrast Check

Large Text (above 18pt) WCAG AA ✓ Pass

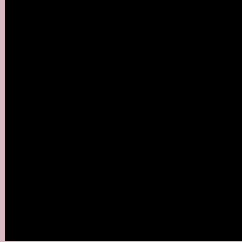
Any Text WCAG AA ✓ Pass

Large Text (above 18pt) WCAG AAA ✓ Pass

Any Text WCAG AAA ✓ Pass

If you want to check with other color combinations, try the [Color Contrast Checker](#).

HunterLab 73.2201, 7.4473, 3.9194 Background



This preview shows how black text looks on a background with the HunterLab color 73.2201, 7.4473, 3.9194.



This preview shows how white text looks on a background with the HunterLab color 73.2201, 7.4473,

3.9194.

Color Blindness Simulation

Color vision deficiency is a very complex topic, and I could not describe the different causes any better than Wikipedia does, so if you want to learn more, you should check out their [article about color blindness](#).

Dichromacy



Original Color

73.2201, 7.4473, 3.9194

Protanopia

73.4526, -2.1071, 2.0995

Deuteranopia

73.0977, 5.5536, 3.7417



Tritanopia

73.2255, 9.3147, 1.0399

Trichromacy



Original Color

73.2201, 7.4473, 3.9194

Protanomaly

73.1810, 1.5014, 2.3236

Deuteranomaly

73.1996, 5.8947, 3.8681

Tritanomaly

73.1620, 8.9783, 1.9432

Monochromacy



Original Color

73.2201, 7.4473, 3.9194

Achromatopsia

74.2975, -3.9643, 4.0367

Achromatomaly

73.7129, 0.1406, 3.8963

CSS Examples

Text

The CSS property to change the color of the text to HunterLab 73.2201, 7.4473, 3.9194 is called "color". The color property can be set on classes, ids or directly on the HTML element.

This example shows how text in the color `rgb(216, 186, 194)` looks like.

```
.text, #text, p{  
    color:rgb(216, 186, 194)  
}
```

If you want to add a text shadow in that color use the text-shadow property, you can generate a text shadow directly with our [CSS Text Shadow Generator](#).

Here you see how black text with a 4 pixel rgb(216, 186, 194) colored shadow looks like.

```
.shadow{ text-shadow: 4px 4px 2px rgb(216, 186, 194) }
```

Border

The CSS property to change the border of an element to HunterLab 73.2201, 7.4473, 3.9194 is called "border".

The border property can be set on classes, ids or directly on the HTML element.

This example shows the color as border, it can be applied via the CSS property "border" or "border-color".

```
.border, #border, table{ border:4px solid rgb(216, 186, 194) }
```


If only the border color should be changed use the property `border-color`.

```
.border{ border-color:rgb(216, 186, 194) }
```

If you want to add a box shadow in that color use:

Here you see how a box with a 4 pixel `rgb(216, 186, 194)` colored shadow looks like.

```
.boxshadow{ -moz-box-shadow:4px 4px 4px  
4px rgb(216, 186, 194); -webkit-box-  
shadow:4px 4px 4px 4px rgb(216, 186, 194);  
box-shadow:4px 4px 4px 4px rgb(216, 186,  
194) }
```

Background

The CSS property to change the background color of an element to HunterLab 73.2201, 7.4473, 3.9194 is called "background". The background property can be set on classes, ids or directly on the HTML element.

```
.background, #background, body{  
background: rgb(216, 186, 194) }
```

If only the background color should be changed can be used:

```
.background{ background-color: rgb(216,  
186, 194) }
```

This example shows the color as background, it is applied via the CSS property "background".

To optimize and compress your CSS code, you can use our [online CSS compressor and optimizer](#) based on csstidy. If you want to create a linear or radial gradient as background or border, check our [CSS Gradient Generator](#).

Hey! You found this booklet interesting? Support Converting Colors with the new Membership Option!

The pro membership hides all ads, plus gives you double the colors in the color bucket, and more awesome pro features!

[Learn more, Memberships starting at \\$2.50/m!](#)

**Follow me
on Twitter!**

@ConvertingColor