

Converting Colors

HunterLab(73.2436, 0.5892,
19.9804)

Have a look what the booklet for
HunterLab(73.2436, 0.5892,
19.9804) contains.

HunterLab(73.1529, 0.6468, 19.9541)	3
<i>Conversions</i>	4
<i>Details</i>	6
<i>Harmonies</i>	12
<i>Previews</i>	24
<i>Color Blindness Simulation</i>	28
<i>CSS Examples</i>	31

Color

**HunterLab(73.1529, 0.6468,
19.9541)**

Conversions

Conversions Part 1

Format	Color
Hex	D9BD9B
RGB	217, 189, 155
RGB Percent	85%, 74%, 61%
CMY	0.1490, 0.2588, 0.3922
CMYK	0.00, 0.13, 0.29, 0.15
HSL	33°, 45%, 73%
HSV	33°, 29%, 85%
XYZ	52.7293, 53.5135, 38.5603
YIQ	193.4960, 27.6020, -4.6380

Conversions

Conversions Part 2

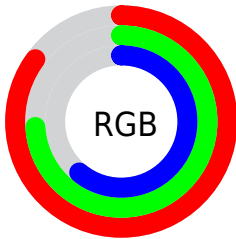
Format	Color
R_{YB}	206, 217, 155
Decimal	14269851
CIE _{Lab}	78.18, 4.90, 20.88
CIE _{LCh}	78, 21.443, 76.783
Yxy	53.5159, 0.3641, 0.3696
Android (android.graphics.Color)	4292459931 (0xFFD9BD9B)
YUV	193.4960, -18.9785, 20.6130
Hunter-Lab	73.1529, 0.6468, 19.9541

Details

The HunterLab color $73.1529, 0.6468, 19.9541$ is a light color, and the websafe version is hex $CCCC99$. A complement of this color would be $67.7082, -5.1936, -15.8535$, and the grayscale version is $73.3067, -3.9115, 3.9829$.

A 20% lighter version of the original color is $95.5081, -7.2966, 20.8729$, and $51.1711, 1.1489, 16.3769$ is the 20% darker color. If you saturate the color by 10%, you get $69.8404, 3.0953, 24.1585$, and if you desaturate by 10%, it is $76.5969, -1.4464, 15.0972$.

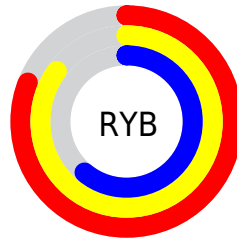
Distribution



Red (85%)

Green (74%)

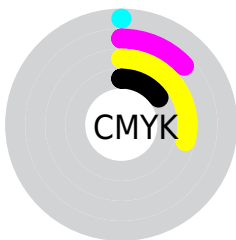
Blue (61%)



Red (81%)

Yellow (85%)

Blue (61%)

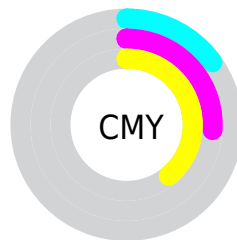


Cyan (0%)

Magenta (13%)

Yellow (29%)

Black (15%)



Cyan (15%)


Magenta (26%)


Yellow (39%)

Brightness & Saturation Gradients


These gradients show how the HunterLab color 73.1529, 0.6468, 19.9541 changes by changing the brightness by 10 percent. The first figure shows a shift by +10% for each color and the second figure -10%.


Similar to the brightness gradients but the following saturation gradients show a change of the HunterLab color 73.1529, 0.6468, 19.9541 by changing the saturation by 10% instead.


 73.1529, 0.6468,
19.9541

 73.1529, 0.6468,
19.9541


200.0653, -4.3579,
34.7240

 61.8181, 1.0075,
18.2271


 97.6540, -0.2147,
23.3194

 51.1365, 1.3213,
16.4536


 110.7601, -0.7045,
24.9712

 41.1527, 1.5805,
14.6178


124.4050, -1.2312,
26.6099

 31.9194, 1.7781,
12.6951

138.5684, -1.7929,
28.2397

 23.5034, 1.9047,
10.6478

153.2319, -2.3878,
29.8637

 15.9935, 1.9460,
8.4827

168.3790, -3.0145,

 9.5161, 1.8792,

31.4844

6.6613

183.9947, -3.6716,
33.1039

0.0000, NaN, NaN

0.0000, NaN, NaN

■ 73.1529, 0.6468,
19.9541

■ 73.1529, 0.6468,
19.9541

■ 69.8404, 3.0953,
24.1585

■ 76.5969, -1.4464,
15.0972

■ 66.6641, 5.9238,
27.6514

■ 80.1583, -3.1975,
9.6401

■ 63.6357, 9.1416,
30.3802

■ 83.8304, -4.6309,
3.6361

■ 60.7654, 12.7517,
32.2990

■ 87.6054, -5.7691,
-2.8663

■ 58.0630, 16.7436,

■ 91.1698, -8.3218,

33.3787

-5.4931

■ 55.5371, 21.0878,
33.6210

■ 94.3298, -13.3716,
-1.5733

■ 53.1902, 25.7121,
33.1264

■ 96.6911, -17.0453,
1.2697

■ 52.8671, 26.3792,
33.0383

Harmonies

Analogous

The Analogous color harmony consists of three colors that are next to each other on the color wheel.



73.1546, 10.0540, 16.3470



73.1529, 0.6468, 19.9541



73.1546, -9.5002, 19.7257

Triad

The Triadic color harmony groups three colors that are evenly spaced from another and form a triangle on the color wheel.



73.1546, 0.6443, 19.9551



73.1546, -21.8016, -1.6290



73.1546, 10.9852, -10.0235

Complementary

The Complementary color scheme is a pair of colors which are on the opposite of each other on the color wheel.



73.1529, 0.6468, 19.9541



67.7082, -5.1936, -15.8535

Split Complementary

Split-complementary colors differ from the complementary color scheme. The scheme consists of three colors, the original color and two neighbors of the complement color.



73.1546, 1.8590, -16.2914



73.1529, 0.6468, 19.9541



73.1546, -16.8942, -11.0075

Square

The Square scheme is like the rectangle color scheme, but the four colors are evenly spaced on the color wheel.



73.1546, 0.6443, 19.9551



73.1546, -22.0869, 8.1320



73.1546, -8.3502, -16.6744



73.1546, 16.2417, -0.4264

Rectangle

The Rectangle color scheme consists of four colors that form a rectangle on the color wheel.



73.1529, 0.6468, 19.9541



73.1546, -15.3158, 17.4380



73.1546, -8.3502, -16.6744



73.1546, 8.2463, -12.6439

Sweetspot

The Sweet Spot groups the original color and five complimentary colors.



73.1546, 0.6443, 19.9551



96.0076, -3.7405, 11.9243



64.5391, 22.5289, -1.4630



44.1236, -1.5977, 5.9791

0.0000, NaN, NaN



46.2646, -2.4686, 2.5136

Same Dimension

The Same Dimension uses a secret algorithm to generate beautiful new colors.



73.1546, 0.6443, 19.9551



85.5185, 2.4080, 26.9527



81.5043, -14.0003, 27.4186



37.7218, -1.4449, 4.7888



41.3920, 19.9522, 25.8548



11.3193, 3.4290, 7.0349

Inverse Universe

The Inverse Universe completely reimagines the original color for something new.



67.7082, -5.1936, -15.8535



77.7309, -5.8610, -24.3681



59.6892, 9.6731, -28.2573



36.8519, -2.3923, -0.9073



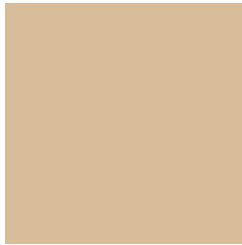
29.1953, 12.0481, -62.5000



8.5016, 0.9600, -12.6987

Previews

White Background



This preview shows how the HunterLab color 73.1529, 0.6468, 19.9541 looks on a white background.

Color Contrast Check

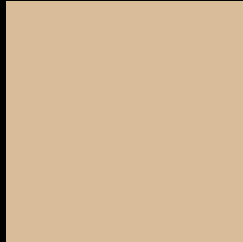
Large Text (above 18pt) WCAG AA × Fail

Any Text WCAG AA × Fail

Large Text (above 18pt) WCAG AAA × Fail

Any Text WCAG AAA × Fail

Black Background



This preview shows how the HunterLab color 73.1529, 0.6468, 19.9541 looks on a black background.

Color Contrast Check

Large Text (above 18pt) WCAG AA ✓ Pass

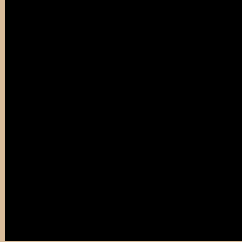
Any Text WCAG AA ✓ Pass

Large Text (above 18pt) WCAG AAA ✓ Pass

Any Text WCAG AAA ✓ Pass

If you want to check with other color combinations, try the [Color Contrast Checker](#).

HunterLab 73.1529, 0.6468, 19.9541 Background



This preview shows how black text looks on a background with the HunterLab color 73.1529, 0.6468, 19.9541.



This preview shows how white text looks on a background with the HunterLab color 73.1529, 0.6468,

Color Blindness Simulation

Color vision deficiency is a very complex topic, and I could not describe the different causes any better than Wikipedia does, so if you want to learn more, you should check out their [article about color blindness](#).

Dichromacy



Original Color

73.1529, 0.6468, 19.9541

Protanopia

73.1802, -5.2948, 19.1568

Deuteranopia

73.1612, 5.2086, 19.6836



Tritanopia

73.0943, 11.6133, 2.3964

Trichromacy



Original Color

73.1529, 0.6468, 19.9541

Protanomaly

73.2495, -3.5528, 19.6154

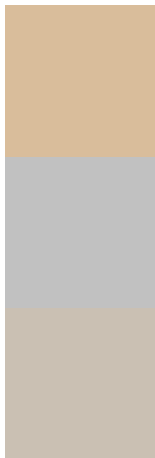
Deuteranomaly

73.1236, 3.5961, 19.6191

Tritanomaly

73.0007, 7.4862, 9.1697

Monochromacy



Original Color

73.1529, 0.6468, 19.9541

Achromatopsia

73.0258, -3.8965, 3.9676

Achromatomaly

73.1509, -2.7277, 10.4607

CSS Examples

Text

The CSS property to change the color of the text to HunterLab 73.1529, 0.6468, 19.9541 is called "color". The color property can be set on classes, ids or directly on the HTML element.

This example shows how text in the color `rgb(217, 189, 155)` looks like.

```
.text, #text, p{  
    color:rgb(217, 189, 155)  
}
```

If you want to add a text shadow in that color use the text-shadow property, you can generate a text shadow directly with our [CSS Text Shadow Generator](#).

Here you see how black text with a 4 pixel rgb(217, 189, 155) colored shadow looks like.

```
.shadow{ text-shadow: 4px 4px 2px rgb(217, 189, 155) }
```

Border

The CSS property to change the border of an element to HunterLab 73.1529, 0.6468, 19.9541 is called "border". The border property can be set on classes, ids or directly on the HTML element.

This example shows the color as border, it can be applied via the CSS property "border" or "border-color".

```
.border, #border, table{ border:4px solid rgb(217, 189, 155) }
```


If only the border color should be changed use the property `border-color`.

```
.border{ border-color:rgb(217, 189, 155) }
```

If you want to add a box shadow in that color use:

Here you see how a box with a 4 pixel `rgb(217, 189, 155)` colored shadow looks like.

```
.boxshadow{ -moz-box-shadow:4px 4px 4px  
4px rgb(217, 189, 155); -webkit-box-  
shadow:4px 4px 4px 4px rgb(217, 189, 155);  
box-shadow:4px 4px 4px 4px rgb(217, 189,  
155) }
```

Background

The CSS property to change the background color of an element to HunterLab 73.1529, 0.6468, 19.9541 is called "background". The background property can be set on classes, ids or directly on the HTML element.

```
.background, #background, body{  
background: rgb(217, 189, 155) }
```

If only the background color should be changed can be used:

```
.background{ background-color: rgb(217,  
189, 155) }
```

This example shows the color as background, it is applied via the CSS property "background".

To optimize and compress your CSS code, you can use our [online CSS compressor and optimizer](#) based on csstidy. If you want to create a linear or radial gradient as background or border, check our [CSS Gradient Generator](#).

Hey! You found this booklet interesting? Support Converting Colors with the new Membership Option!

The pro membership hides all ads, plus gives you double the colors in the color bucket, and more awesome pro features!

[Learn more, Memberships starting at \\$2.50/m!](#)

**Follow me
on Twitter!**

@ConvertingColor