

Converting Colors

HunterLab(73.5963, 8.3942,
6.7112)

Have a look what the booklet for
HunterLab(73.5963, 8.3942, 6.7112)
contains.

HunterLab(73.5963, 8.3942, 6.7112)	3
<i>Conversions</i>	4
<i>Details</i>	6
<i>Harmonies</i>	12
<i>Previews</i>	24
<i>Color Blindness Simulation</i>	28
<i>CSS Examples</i>	31

Color

**HunterLab(73.5963, 8.3942,
6.7112)**

Conversions

Conversions Part 1

Format	Color
Hex	DDBABD
RGB	221, 186, 189
RGB Percent	87%, 73%, 74%
CMY	0.1333, 0.2706, 0.2588
CMYK	0.00, 0.16, 0.14, 0.13
HSL	355°, 34%, 80%
HSV	355°, 16%, 87%
XYZ	56.5631, 54.1642, 55.6177
YIQ	196.8070, 19.8970, 8.3530

Conversions

Conversions Part 2

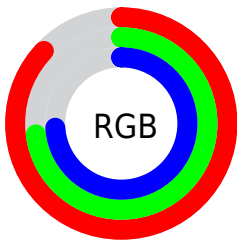
Format	Color
R _Y B	221, 186, 189
Decimal	14531261
CIE Lab	78.56, 12.99, 3.16
CIE LCh	79, 13.367, 13.657
Yxy	54.1666, 0.3400, 0.3256
Android (android.graphics.Color)	4292721341 (0xFFDDBABD)
YUV	196.8070, -3.8489, 21.2173
Hunter-Lab	73.5963, 8.3942, 6.7112

Details

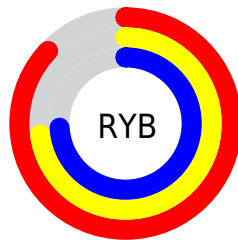
The HunterLab color $73.5963, 8.3942, 6.7112$ is a light color, and the websafe version is hex FFCCCC . A complement of this color would be $81.9850, -15.5327, 2.2760$, and the grayscale version is $74.6515, -3.9832, 4.0560$.

A 20% lighter version of the original color is $95.5808, -0.1717, 5.3069$, and $51.6330, 8.3678, 5.2157$ is the 20% darker color. If you saturate the color by 10%, you get $66.8926, 16.9470, 8.3357$, and if you desaturate by 10%, it is $80.7152, 0.1401, 5.3291$.

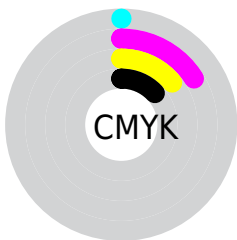
Distribution



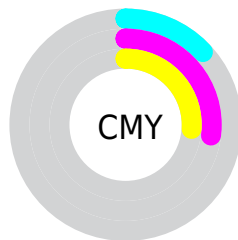
- Red (87%)
- Green (73%)
- Blue (74%)



- Red (87%)
- Yellow (73%)
- Blue (74%)



- Cyan (0%)
- Magenta (16%)
- Yellow (14%)
- Black (13%)



- Cyan (13%)
- Magenta (27%)
- Yellow (26%)

Brightness & Saturation Gradients

These gradients show how the HunterLab color 73.5963, 8.3942, 6.7112 changes by changing the brightness by 10 percent. The first figure shows a shift by +10% for each color and the second figure -10%.


Similar to the brightness gradients but the following saturation gradients show a change of the HunterLab color 73.5963, 8.3942, 6.7112 by changing the saturation by 10% instead.


 73.5963, 8.3942,
6.7112

 73.5963, 8.3942,
6.7112


200.6851, 6.2336,
14.7408

 62.2373, 8.3724,
5.9411


 98.1421, 8.2472,
8.3311

 51.5301, 8.2828,
5.1955


111.2691, 8.0930,
9.1774

 41.5189, 8.1144,
4.4760


124.9341, 7.8897,
10.0476

 32.2559, 7.8556,
3.7822

139.1168, 7.6404,
10.9413

 23.8074, 7.4904,
3.1134

153.7990, 7.3479,
11.8579

 16.2611, 6.9964,
2.4665

168.9641, 7.0146,

 9.7414, 6.3409,

12.7970

1.8828

184.5974, 6.6426,
13.7581

0.0000, INF, NaN

0.0000, NaN, NaN

■ 73.5963, 8.3942,
6.7112

■ 73.5963, 8.3942,
6.7112

■ 66.8926, 16.9470,
8.3357

■ 80.7152, 0.1401,
5.3291

■ 60.6771, 25.7692,
10.2257

■ 88.1822, -7.8172,
4.1537

■ 55.0481, 34.7368,
12.3923

■ 95.9500, -15.5088,
3.1556

■ 50.1201, 43.5849,
14.8080

■ 97.0115, -15.8936,
1.6789

■ 46.0186, 51.8505,

17.3801

■ 42.8601, 58.8758,
19.9303

■ 40.7160, 63.9557,
22.2081

■ 39.5636, 66.6599,
23.9613

■ 39.2671, 67.3651,
24.4507

Harmonies

Analogous

The Analogous color harmony consists of three colors that are next to each other on the color wheel.



73.5979, 8.2332, 0.6411



73.5963, 8.3942, 6.7112



73.5979, 5.1702, 11.6261

Triad

The Triadic color harmony groups three colors that are evenly spaced from another and form a triangle on the color wheel.



73.5979, 8.3919, 6.7124



73.5979, -12.2216, 11.9699



73.5979, -7.3562, -8.1142

Complementary

The Complementary color scheme is a pair of colors which are on the opposite of each other on the color wheel.



73.5963, 8.3942, 6.7112



81.9850, -15.5327, 2.2760

Split Complementary

Split-complementary colors differ from the complementary color scheme. The scheme consists of three colors, the original color and two neighbors of the complement color.



73.5979, -12.6102, -4.5271



73.5963, 8.3942, 6.7112



73.5979, -15.3531, 7.2194

Square

The Square scheme is like the rectangle color scheme, but the four colors are evenly spaced on the color wheel.



73.5979, 8.3919, 6.7124



73.5979, -6.8093, 14.4819



73.5979, -15.4928, 1.1930



73.5979, -1.0077, -8.2793

Rectangle

The Rectangle color scheme consists of four colors that form a rectangle on the color wheel.



73.5963, 8.3942, 6.7112



73.5979, 1.6005, 13.7288



73.5979, -15.4928, 1.1930



73.5979, -9.3037, -7.2556

Sweetspot

The Sweet Spot groups the original color and five complimentary colors.



73.5979, 8.3919, 6.7124



95.6059, -0.5914, 6.1487



74.2760, 12.7089, -8.6143



43.9497, 0.0381, 2.8934

0.0000, NaN, NaN



46.2646, -2.4686, 2.5136

Same Dimension

The Same Dimension uses a secret algorithm to generate beautiful new colors.



73.5979, 8.3919, 6.7124



83.8784, 13.1677, 8.4942



77.6067, 0.6686, 12.3400



36.1518, 1.4211, 2.6845



29.9399, 51.3867, 18.4649



7.6625, 13.2346, 4.0802

Inverse Universe

The Inverse Universe completely reimagines the original color for something new.



73.5979, 8.3919, 6.7124



83.8784, 13.1677, 8.4942



77.6449, -8.0218, -4.5321



36.1518, 1.4211, 2.6845



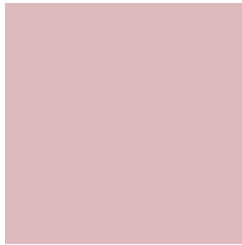
29.9399, 51.3867, 18.4649



7.6625, 13.2346, 4.0802

Previews

White Background



This preview shows how the HunterLab color 73.5963, 8.3942, 6.7112 looks on a white background.

Color Contrast Check

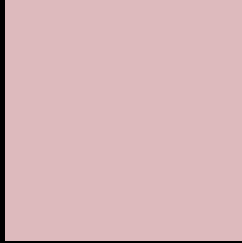
Large Text (above 18pt) WCAG AA × Fail

Any Text WCAG AA × Fail

Large Text (above 18pt) WCAG AAA × Fail

Any Text WCAG AAA × Fail

Black Background



This preview shows how the HunterLab color 73.5963, 8.3942, 6.7112 looks on a black background.

Color Contrast Check

Large Text (above 18pt) WCAG AA ✓ Pass

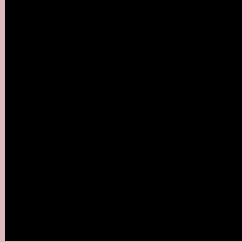
Any Text WCAG AA ✓ Pass

Large Text (above 18pt) WCAG AAA ✓ Pass

Any Text WCAG AAA ✓ Pass

If you want to check with other color combinations, try the [Color Contrast Checker](#).

HunterLab 73.5963, 8.3942, 6.7112 Background



This preview shows how black text looks on a background with the HunterLab color 73.5963, 8.3942, 6.7112.



This preview shows how white text looks on a background with the HunterLab color 73.5963, 8.3942,

Color Blindness Simulation

Color vision deficiency is a very complex topic, and I could not describe the different causes any better than Wikipedia does, so if you want to learn more, you should check out their [article about color blindness](#).

Dichromacy



Original Color

73.5963, 8.3942, 6.7112

Protanopia

73.7832, -2.8209, 4.8737

Deuteranopia

73.6475, 5.6023, 6.7208



Tritanopia

73.4398, 11.4162, 1.8310

Trichromacy



Original Color

73.5963, 8.3942, 6.7112

Protanomaly

73.6133, 1.1449, 5.2143

Deuteranomaly

73.5664, 6.8183, 6.6495

Tritanomaly

73.5987, 10.2299, 3.9381

Monochromacy



Original Color

73.5963, 8.3942, 6.7112

Achromatopsia

74.7222, -3.9870, 4.0598

Achromatomaly

74.2676, 0.4468, 5.0253

CSS Examples

Text

The CSS property to change the color of the text to HunterLab 73.5963, 8.3942, 6.7112 is called "color". The color property can be set on classes, ids or directly on the HTML element.

This example shows how text in the color `rgb(221, 186, 189)` looks like.

```
.text, #text, p{  
    color:rgb(221, 186, 189)  
}
```

If you want to add a text shadow in that color use the text-shadow property, you can generate a text shadow directly with our [CSS Text Shadow Generator](#).

Here you see how black text with a 4 pixel rgb(221, 186, 189) colored shadow looks like.

```
.shadow{ text-shadow: 4px 4px 2px rgb(221, 186, 189) }
```

Border

The CSS property to change the border of an element to HunterLab 73.5963, 8.3942, 6.7112 is called "border".

The border property can be set on classes, ids or directly on the HTML element.

This example shows the color as border, it can be applied via the CSS property "border" or "border-color".

```
.border, #border, table{ border:4px solid rgb(221, 186, 189) }
```


If only the border color should be changed use the property `border-color`.

```
.border{ border-color:rgb(221, 186, 189) }
```

If you want to add a box shadow in that color use:

Here you see how a box with a 4 pixel `rgb(221, 186, 189)` colored shadow looks like.

```
.boxshadow{ -moz-box-shadow:4px 4px 4px 4px rgb(221, 186, 189); -webkit-box-shadow:4px 4px 4px 4px rgb(221, 186, 189); box-shadow:4px 4px 4px 4px rgb(221, 186, 189) }
```

Background

The CSS property to change the background color of an element to HunterLab 73.5963, 8.3942, 6.7112 is called "background". The background property can be set on classes, ids or directly on the HTML element.

```
.background, #background, body{  
background: rgb(221, 186, 189) }
```

If only the background color should be changed can be used:

```
.background{ background-color: rgb(221,  
186, 189) }
```

This example shows the color as background, it is applied via the CSS property "background".

To optimize and compress your CSS code, you can use our [online CSS compressor and optimizer](#) based on csstidy. If you want to create a linear or radial gradient as background or border, check our [CSS Gradient Generator](#).

Hey! You found this booklet interesting? Support Converting Colors with the new Membership Option!

The pro membership hides all ads, plus gives you double the colors in the color bucket, and more awesome pro features!

[Learn more, Memberships starting at \\$2.50/m!](#)

**Follow me
on Twitter!**

@ConvertingColor