

# Converting Colors

HunterLab(73.6575, 7.8518,  
7.9512)

Have a look what the booklet for  
HunterLab(73.6575, 7.8518, 7.9512)  
contains.

<b>HunterLab(73.5086, 7.9284, 7.9656)</b> .....	3
<b><i>Conversions</i></b> .....	4
<b><i>Details</i></b> .....	6
<b><i>Harmonies</i></b> .....	12
<b><i>Previews</i></b> .....	24
<b><i>Color Blindness Simulation</i></b> .....	28
<b><i>CSS Examples</i></b> .....	31

# Color

**HunterLab(73.5086, 7.9284,  
7.9656)**

# Conversions

## Conversions Part 1

<b>Format</b>	<b>Color</b>
Hex	DDBABA
RGB	221, 186, 186
RGB Percent	87%, 73%, 73%
CMY	0.1333, 0.2706, 0.2706
CMYK	0.00, 0.16, 0.16, 0.13
HSL	0°, 34%, 80%
HSV	0°, 16%, 87%
XYZ	56.2406, 54.0351, 53.9201
YIQ	196.4650, 20.8600, 7.4200

# Conversions

## Conversions Part 2

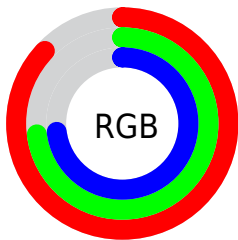
<b>Format</b>	<b>Color</b>
R <sub>Y</sub> B	221, 186, 186
Decimal	14531258
CIE Lab	78.48, 12.51, 4.67
CIE LCh	78, 13.356, 20.467
Yxy	54.0376, 0.3425, 0.3291
Android (android.graphics.Color)	4292721338 (0xFFDDBABA)
YUV	196.4650, -5.1592, 21.5172
Hunter-Lab	73.5086, 7.9284, 7.9656

# Details

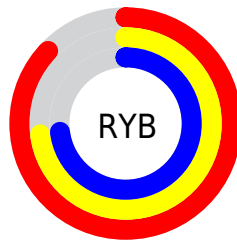
The HunterLab color  $73.5086, 7.9284, 7.9656$  is a light color, and the websafe version is hex  $\text{FFCCCC}$ . A complement of this color would be  $82.0799, -14.9905, 0.9012$ , and the grayscale version is  $74.5113, -3.9757, 4.0483$ .

A 20% lighter version of the original color is  $95.4856, -0.6883, 6.6648$ , and  $51.5514, 7.9384, 6.3834$  is the 20% darker color. If you saturate the color by 10%, you get  $66.7585, 16.2483, 10.2694$ , and if you desaturate by 10%, it is  $80.6804, -0.0427, 5.8127$ .

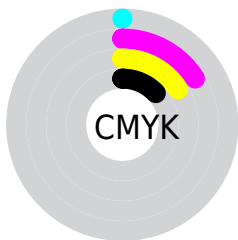
# Distribution



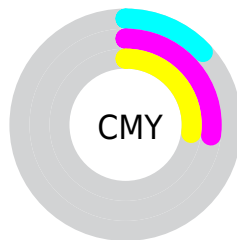
- Red (87%)
- Green (73%)
- Blue (73%)



- Red (87%)
- Yellow (73%)
- Blue (73%)



- Cyan (0%)
- Magenta (16%)
- Yellow (16%)
- Black (13%)




- Cyan (13%)
- Magenta (27%)
- Yellow (27%)

# Brightness & Saturation Gradients

These gradients show how the HunterLab color 73.5086, 7.9284, 7.9656 changes by changing the brightness by 10 percent. The first figure shows a shift by +10% for each color and the second figure -10%.


Similar to the brightness gradients but the following saturation gradients show a change of the HunterLab color 73.5086, 7.9284, 7.9656 by changing the saturation by 10% instead.





 73.5086, 7.9284,  
7.9656

 73.5086, 7.9284,  
7.9656

200.5625, 5.6049,  
16.5368

 62.1544, 7.9282,  
7.1201


 98.0456, 7.7407,  
9.7240

 51.4522, 7.8614,  
6.2942

111.1684, 7.5674,  
10.6347

 41.4464, 7.7170,  
5.4881


124.8295, 7.3456,  
11.5666

 32.1893, 7.4835,  
4.6999

139.0084, 7.0784,  
12.5196

 23.7473, 7.1453,  
3.9260

153.6869, 6.7685,  
13.4934

 16.2081, 6.6801,  
3.1593

168.8484, 6.4183,

 9.6968, 6.0551,

14.4877

2.5314

184.4782, 6.0298,  
15.5023

0.0000, INF, NaN

0.0000, NaN, NaN

■ 73.5086, 7.9284,  
7.9656

■ 73.5086, 7.9284,  
7.9656

■ 66.7585, 16.2483,  
10.2694

■ 80.6804, -0.0427,  
5.8127

■ 60.5053, 24.9003,  
12.7184

■ 88.2055, -7.6771,  
3.7962

■ 54.8498, 33.7734,  
15.2843

■ 96.0354, -15.0142,  
1.9012

■ 49.9100, 42.6130,  
17.8904

■ 97.0115, -15.8936,  
1.6789

■ 45.8146, 50.9589,

20.3915

■ 42.6822, 58.1424,  
22.5722

■ 40.5829, 63.4340,  
24.1931

■ 39.4876, 66.3714,  
25.0973

■ 39.2082, 67.1417,  
25.3353

# Harmonies

## Analogous

The Analogous color harmony consists of three colors that are next to each other on the color wheel.



73.5103, 8.5699, 2.0419



73.5086, 7.9284, 7.9656



73.5103, 4.0481, 12.4464

# Triad

The Triadic color harmony groups three colors that are evenly spaced from another and form a triangle on the color wheel.



73.5103, 7.9261, 7.9668



73.5103, -13.1523, 11.0500



73.5103, -5.9474, -8.4654

# Complementary

The Complementary color scheme is a pair of colors which are on the opposite of each other on the color wheel.



73.5086, 7.9284, 7.9656



82.0799, -14.9905, 0.9012

# Split Complementary

Split-complementary colors differ from the complementary color scheme. The scheme consists of three colors, the original color and two neighbors of the complement color.



73.5103, -11.5746, -5.5821



73.5086, 7.9284, 7.9656



73.5103, -15.6397, 5.9084

# Square

The Square scheme is like the rectangle color scheme, but the four colors are evenly spaced on the color wheel.



73.5103, 7.9261, 7.9668



73.5103, -8.1677, 14.1183



73.5103, -15.0722, -0.1981



73.5103, 0.4135, -7.7955



# Rectangle

The Rectangle color scheme consists of four colors that form a rectangle on the color wheel.



73.5086, 7.9284, 7.9656



73.5103, 0.2214, 14.1737



73.5103, -15.0722, -0.1981



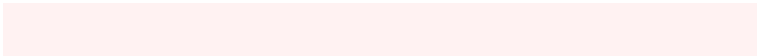
73.5103, -7.9840, -7.8709

# Sweetspot

The Sweet Spot groups the original color and five complimentary colors.



73.5103, 7.9261, 7.9668



95.5719, -0.7794, 6.6412



74.6399, 13.8961, -8.1030



43.9318, -0.0607, 3.1526

0.0000, NaN, NaN



46.2646, -2.4686, 2.5136



# Same Dimension

The Same Dimension uses a secret algorithm to generate beautiful new colors.



73.5103, 7.9261, 7.9668



83.7577, 12.5201, 10.2473



78.6552, -1.1274, 13.4295



36.1272, 1.2864, 3.0406



29.8837, 51.1730, 19.3100



7.6068, 13.0231, 4.9153



# Inverse Universe

The Inverse Universe completely reimagines the original color for something new.



82.0799, -14.9905, 0.9012



95.8839, -19.9560, 0.2330



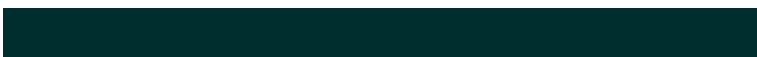
76.5563, -6.2575, -5.9147



38.5089, -5.0699, 1.0811



57.5030, -30.4811, -6.0739

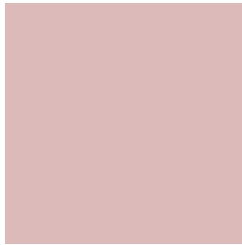


14.6364, -7.7586, -1.5456



# Previews

## White Background



This preview shows how the HunterLab color 73.5086, 7.9284, 7.9656 looks on a white background.

## Color Contrast Check

Large Text (above 18pt) WCAG AA × Fail

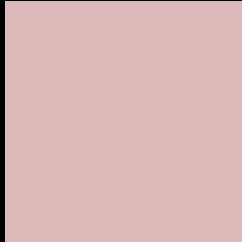
Any Text WCAG AA × Fail

Large Text (above 18pt) WCAG AAA × Fail

Any Text WCAG AAA × Fail



# Black Background



This preview shows how the HunterLab color 73.5086, 7.9284, 7.9656 looks on a black background.

## Color Contrast Check

Large Text (above 18pt) WCAG AA ✓ Pass

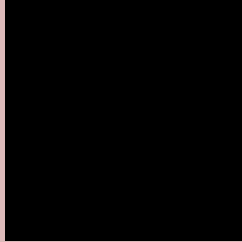
Any Text WCAG AA ✓ Pass

Large Text (above 18pt) WCAG AAA ✓ Pass

Any Text WCAG AAA ✓ Pass

If you want to check with other color combinations, try the [Color Contrast Checker](#).

## HunterLab 73.5086, 7.9284, 7.9656 Background



This preview shows how black text looks on a background with the HunterLab color 73.5086, 7.9284, 7.9656.



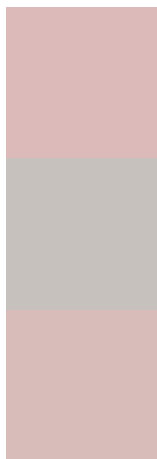
This preview shows how white text looks on a background with the HunterLab color 73.5086, 7.9284,

7.9656.

# Color Blindness Simulation

Color vision deficiency is a very complex topic, and I could not describe the different causes any better than Wikipedia does, so if you want to learn more, you should check out their [article about color blindness](#).

## Dichromacy



### Original Color

73.5086, 7.9284, 7.9656

### Protanopia

73.4845, -2.4862, 5.9321

### Deuteranopia

73.5599, 5.1335, 7.9744



## Tritanopia

73.5161, 11.6024, 2.4158

# Trichromacy



## Original Color

73.5086, 7.9284, 7.9656

## Protanomaly

73.3256, 1.5061, 6.2806

## Deuteranomaly

73.4787, 6.3504, 7.9044

## Tritanomaly

73.5680, 10.0679, 4.3752

# Monochromacy



## Original Color

73.5086, 7.9284, 7.9656

## Achromatopsia

74.2975, -3.9643, 4.0367

## Achromatomaly

73.8134, 0.3024, 5.4318

# CSS Examples

## Text

The CSS property to change the color of the text to HunterLab 73.5086, 7.9284, 7.9656 is called "color". The color property can be set on classes, ids or directly on the HTML element.

This example shows how text in the color `rgb(221, 186, 186)` looks like.

```
.text, #text, p{  
    color:rgb(221, 186, 186)  
}
```

If you want to add a text shadow in that color use the text-shadow property, you can generate a text shadow directly with our [CSS Text Shadow Generator](#).

Here you see how black text with a 4 pixel rgb(221, 186, 186) colored shadow looks like.

```
.shadow{ text-shadow: 4px 4px 2px rgb(221, 186, 186) }
```

## Border

The CSS property to change the border of an element to HunterLab 73.5086, 7.9284, 7.9656 is called "border".

The border property can be set on classes, ids or directly on the HTML element.

This example shows the color as border, it can be applied via the CSS property "border" or "border-color".

```
.border, #border, table{ border:4px solid rgb(221, 186, 186) }
```



If only the border color should be changed use the property `border-color`.

```
.border{ border-color:rgb(221, 186, 186) }
```

If you want to add a box shadow in that color use:

Here you see how a box with a 4 pixel `rgb(221, 186, 186)` colored shadow looks like.

```
.boxshadow{ -moz-box-shadow:4px 4px 4px  
4px rgb(221, 186, 186); -webkit-box-  
shadow:4px 4px 4px 4px rgb(221, 186, 186);  
box-shadow:4px 4px 4px 4px rgb(221, 186,  
186) }
```

# Background

The CSS property to change the background color of an element to HunterLab 73.5086, 7.9284, 7.9656 is called "background". The background property can be set on classes, ids or directly on the HTML element.

```
.background, #background, body{  
background: rgb(221, 186, 186) }
```

If only the background color should be changed can be used:

```
.background{ background-color: rgb(221,  
186, 186) }
```

This example shows the color as background, it is applied via the CSS property "background".

To optimize and compress your CSS code, you can use our [online CSS compressor and optimizer](#) based on csstidy. If you want to create a linear or radial gradient as background or border, check our [CSS Gradient Generator](#).

Hey! You found this booklet interesting? Support Converting Colors with the new Membership Option!

The pro membership hides all ads, plus gives you double the colors in the color bucket, and more awesome pro features!

**[Learn more, Memberships starting at \\$2.50/m!](#)**

**Follow me  
on Twitter!**

@ConvertingColor