

Converting Colors

HunterLab(73.7140, 1.2965,
3.6116)

Have a look what the booklet for
HunterLab(73.7140, 1.2965, 3.6116)
contains.

HunterLab(73.6385, 1.4749, 3.3529)	3
<i>Conversions</i>	4
<i>Details</i>	6
<i>Harmonies</i>	12
<i>Previews</i>	24
<i>Color Blindness Simulation</i>	28
<i>CSS Examples</i>	31

Color

**HunterLab(73.6385, 1.4749,
3.3529)**

Conversions

Conversions Part 1

Format	Color
Hex	CDBFC4
RGB	205, 191, 196
RGB Percent	80%, 75%, 77%
CMY	0.1961, 0.2510, 0.2314
CMYK	0.00, 0.07, 0.04, 0.20
HSL	339°, 12%, 78%
HSV	339°, 7%, 80%
XYZ	53.7715, 54.2263, 59.8573
YIQ	195.7560, 6.7390, 4.5230

Conversions

Conversions Part 2

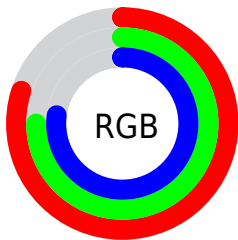
Format	Color
R _{YB}	205, 191, 196
Decimal	13483972
CIE Lab	78.59, 5.80, -0.74
CIE LCh	79, 5.846, 352.680
Yxy	54.2286, 0.3203, 0.3231
Android (android.graphics.Color)	4291674052 (0xFFCDBFC4)
YUV	195.7560, 0.1203, 8.1070
Hunter-Lab	73.6385, 1.4749, 3.3529

Details

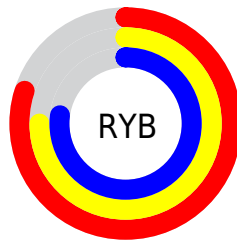
The HunterLab color $73.6385, 1.4749, 3.3529$ is a light color, and the websafe version is hex `CCCCCC`. A complement of this color would be $76.7532, -9.3279, 4.9186$, and the grayscale version is $74.1928, -3.9587, 4.0310$.

A 20% lighter version of the original color is $97.4030, -1.4344, 3.4278$, and $51.6810, 1.8924, 2.5197$ is the 20% darker color. If you saturate the color by 10%, you get $67.3274, 9.9003, 2.2951$, and if you desaturate by 10%, it is $80.2694, -6.7600, 4.6995$.

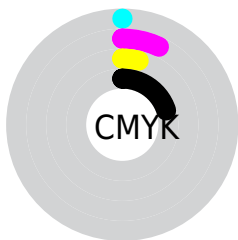
Distribution



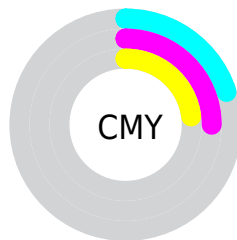
- Red (80%)
- Green (75%)
- Blue (77%)



- Red (80%)
- Yellow (75%)
- Blue (77%)



- Cyan (0%)
- Magenta (7%)
- Yellow (4%)
- Black (20%)



- Cyan (20%)
- Magenta (25%)
- Yellow (23%)

Brightness & Saturation Gradients

These gradients show how the HunterLab color 73.6385, 1.4749, 3.3529 changes by changing the brightness by 10 percent. The first figure shows a shift by +10% for each color and the second figure -10%.

Similar to the brightness gradients but the following saturation gradients show a change of the HunterLab color 73.6385, 1.4749, 3.3529 by changing the saturation by 10% instead.

■ 73.6385, 1.4749,
3.3529

■ 73.6385, 1.4749,
3.3529

200.7439, -3.2219,
10.0150

■ 62.2772, 1.7947,
2.7708

■ 98.1885, 0.6913,
4.6251

■ 51.5675, 2.0647,
2.2252

111.3175, 0.2378,
5.3092

■ 41.5537, 2.2774,
1.7201

124.9844, -0.2539,
6.0238

■ 32.2880, 2.4253,
1.2588

139.1689, -0.7819,
6.7677

■ 23.8364, 2.4980,
0.8459

153.8529, -1.3441,
7.5397

■ 16.2866, 2.4804,
0.4877

169.0197, -1.9391,

■ 9.7629, 2.3477,

8.3388

0.1934

184.6546, -2.5654,
9.1642

0.0000, NaN, NaN

0.0000, NaN, NaN

■ 73.6385, 1.4749,
3.3529

■ 73.6385, 1.4749,
3.3529

■ 67.3274, 9.9003,
2.2951

■ 80.2694, -6.7600,
4.6995

■ 61.3857, 18.5012,
1.5909

■ 87.1717, -14.8046,
6.2775

■ 55.8828, 27.2048,
1.3256

■ 94.3121, -22.6789,
8.0461

■ 50.9009, 35.8537,
1.5961

■ 95.5625, -21.5508,
3.0408

■ 46.5360, 44.1590,

■ 95.7702, -20.3787,

2.4998

0.0860

■ 42.8909, 51.6660,
4.1075

■ 40.0585, 57.7793,
6.4180

■ 38.0932, 61.9083,
9.3107

■ 36.9615, 63.7795,
12.5207

Harmonies

Analogous

The Analogous color harmony consists of three colors that are next to each other on the color wheel.



73.6401, 0.3893, 0.8414



73.6385, 1.4749, 3.3529



73.6401, 1.0910, 5.9524

Triad

The Triadic color harmony groups three colors that are evenly spaced from another and form a triangle on the color wheel.



73.6401, 1.4730, 3.3541



73.6401, -5.9938, 8.5708



73.6401, -7.1629, -0.1739

Complementary

The Complementary color scheme is a pair of colors which are on the opposite of each other on the color wheel.



73.6385, 1.4749, 3.3529



76.7532, -9.3279, 4.9186

Split Complementary

Split-complementary colors differ from the complementary color scheme. The scheme consists of three colors, the original color and two neighbors of the complement color.



73.6401, -8.8262, 2.0100



73.6385, 1.4749, 3.3529



73.6401, -8.1583, 7.0408

Square

The Square scheme is like the rectangle color scheme, but the four colors are evenly spaced on the color wheel.



73.6401, 1.4730, 3.3541



73.6401, -3.2473, 8.9006



73.6401, -9.1878, 4.6568



73.6401, -4.6166, -1.2443

Rectangle

The Rectangle color scheme consists of four colors that form a rectangle on the color wheel.



73.6385, 1.4749, 3.3529



73.6401, 0.0592, 7.3903



73.6401, -9.1878, 4.6568



73.6401, -7.8423, 0.4581

Sweetspot

The Sweet Spot groups the original color and five complimentary colors.



73.6401, 1.4730, 3.3541



98.2749, -3.2058, 5.0785



73.4391, 1.3624, -1.3538



45.5059, -1.5321, 2.3575

0.0000, NaN, NaN



46.2646, -2.4686, 2.5136

Same Dimension

The Same Dimension uses a secret algorithm to generate beautiful new colors.



73.6401, 1.4730, 3.3541



93.1942, 3.2459, 4.0980



74.0433, -0.3036, 6.1485



33.5838, 1.6871, 1.4241



28.9785, 50.7223, 10.2311



6.6904, 11.9175, 0.7573

Inverse Universe

The Inverse Universe completely reimagines the original color for something new.



73.6401, 1.4730, 3.3541



93.1942, 3.2459, 4.0980



76.3286, -7.5387, 2.0362



33.5838, 1.6871, 1.4241



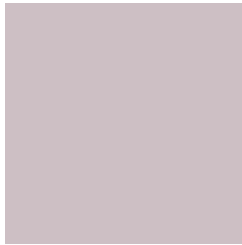
28.9785, 50.7223, 10.2311



6.6904, 11.9175, 0.7573

Previews

White Background



This preview shows how the HunterLab color 73.6385, 1.4749, 3.3529 looks on a white background.

Color Contrast Check

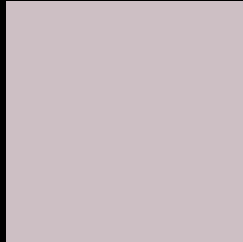
Large Text (above 18pt) WCAG AA × Fail

Any Text WCAG AA × Fail

Large Text (above 18pt) WCAG AAA × Fail

Any Text WCAG AAA × Fail

Black Background



This preview shows how the HunterLab color 73.6385, 1.4749, 3.3529 looks on a black background.

Color Contrast Check

Large Text (above 18pt) WCAG AA ✓ Pass

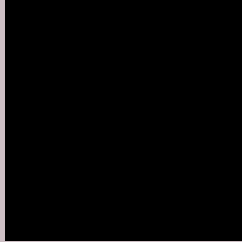
Any Text WCAG AA ✓ Pass

Large Text (above 18pt) WCAG AAA ✓ Pass

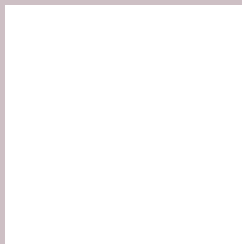
Any Text WCAG AAA ✓ Pass

If you want to check with other color combinations, try the [Color Contrast Checker](#).

HunterLab 73.6385, 1.4749, 3.3529 Background



This preview shows how black text looks on a background with the HunterLab color 73.6385, 1.4749, 3.3529.



This preview shows how white text looks on a background with the HunterLab color 73.6385, 1.4749,

Color Blindness Simulation

Color vision deficiency is a very complex topic, and I could not describe the different causes any better than Wikipedia does, so if you want to learn more, you should check out their [article about color blindness](#).

Dichromacy



Original Color

73.6385, 1.4749, 3.3529

Protanopia

73.8140, -2.4690, 3.0111

Deuteranopia

73.4811, 5.5304, 2.7537



Tritanopia

73.7269, 3.8636, -0.9500

Trichromacy



Original Color

73.6385, 1.4749, 3.3529

Protanomaly

73.7906, -1.0049, 3.0088

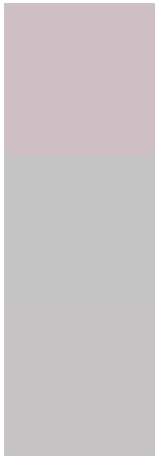
Deuteranomaly

73.4723, 4.0011, 2.7164

Tritanomaly

73.6295, 3.3400, 0.4337

Monochromacy



Original Color

73.6385, 1.4749, 3.3529

Achromatopsia

74.2975, -3.9643, 4.0367

Achromatomaly

73.9670, -2.0022, 3.6813

CSS Examples

Text

The CSS property to change the color of the text to HunterLab 73.6385, 1.4749, 3.3529 is called "color". The color property can be set on classes, ids or directly on the HTML element.

This example shows how text in the color `rgb(205, 191, 196)` looks like.

```
.text, #text, p{  
    color:rgb(205, 191, 196)  
}
```

If you want to add a text shadow in that color use the text-shadow property, you can generate a text shadow directly with our [CSS Text Shadow Generator](#).

Here you see how black text with a 4 pixel rgb(205, 191, 196) colored shadow looks like.

```
.shadow{ text-shadow: 4px 4px 2px rgb(205, 191, 196) }
```

Border

The CSS property to change the border of an element to HunterLab 73.6385, 1.4749, 3.3529 is called "border". The border property can be set on classes, ids or directly on the HTML element.

This example shows the color as border, it can be applied via the CSS property "border" or "border-color".

```
.border, #border, table{ border:4px solid rgb(205, 191, 196) }
```


If only the border color should be changed use the property border-color.

```
.border{ border-color:rgb(205, 191, 196) }
```

If you want to add a box shadow in that color use:

Here you see how a box with a 4 pixel rgb(205, 191, 196) colored shadow looks like.

```
.boxshadow{ -moz-box-shadow:4px 4px 4px  
4px rgb(205, 191, 196); -webkit-box-  
shadow:4px 4px 4px 4px rgb(205, 191, 196);  
box-shadow:4px 4px 4px 4px rgb(205, 191,  
196) }
```

Background

The CSS property to change the background color of an element to HunterLab 73.6385, 1.4749, 3.3529 is called "background". The background property can be set on classes, ids or directly on the HTML element.

```
.background, #background, body{  
background: rgb(205, 191, 196) }
```

If only the background color should be changed can be used:

```
.background{ background-color: rgb(205,  
191, 196) }
```

This example shows the color as background, it is applied via the CSS property "background".

To optimize and compress your CSS code, you can use our [online CSS compressor and optimizer](#) based on csstidy. If you want to create a linear or radial gradient as background or border, check our [CSS Gradient Generator](#).

Hey! You found this booklet interesting? Support Converting Colors with the new Membership Option!

The pro membership hides all ads, plus gives you double the colors in the color bucket, and more awesome pro features!

[Learn more, Memberships starting at \\$2.50/m!](#)

**Follow me
on Twitter!**

@ConvertingColor