

Converting Colors

HunterLab(73.7345, 7.1561,
8.1249)

Have a look what the booklet for
HunterLab(73.7345, 7.1561, 8.1249)
contains.

HunterLab(73.6895, 7.0531, 8.1538)	3
<i>Conversions</i>	4
<i>Details</i>	6
<i>Harmonies</i>	12
<i>Previews</i>	24
<i>Color Blindness Simulation</i>	28
<i>CSS Examples</i>	31

Color

**HunterLab(73.6895, 7.0531,
8.1538)**

Conversions

Conversions Part 1

Format	Color
Hex	DCBBBA
RGB	220, 187, 186
RGB Percent	86%, 73%, 73%
CMY	0.1373, 0.2666, 0.2706
CMYK	0.00, 0.15, 0.15, 0.14
HSL	2°, 33%, 80%
HSV	2°, 15%, 86%
XYZ	56.1484, 54.3014, 53.9762
YIQ	196.7530, 19.9890, 6.6850

Conversions

Conversions Part 2

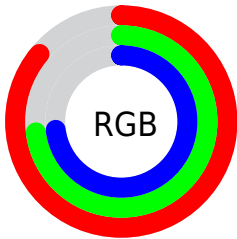
Format	Color
R _Y B	220, 187, 186
Decimal	14465978
CIE Lab	78.64, 11.62, 4.88
CIE LCh	79, 12.600, 22.799
Yxy	54.3039, 0.3415, 0.3303
Android (android.graphics.Color)	4292656058 (0xFFDCBBBA)
YUV	196.7530, -5.3012, 20.3876
Hunter-Lab	73.6895, 7.0531, 8.1538

Details

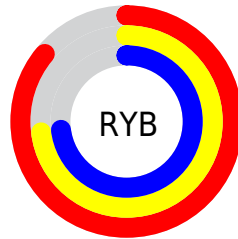
The HunterLab color $73.6895, 7.0531, 8.1538$ is a light color, and the websafe version is hex FFCCCC . A complement of this color would be $81.4051, -14.1859, 0.5972$, and the grayscale version is $74.6344, -3.9823, 4.0550$.

A 20% lighter version of the original color is $95.7977, -1.2203, 7.0177$, and $51.7136, 7.1008, 6.5487$ is the 20% darker color. If you saturate the color by 10%, you get $67.1143, 14.9734, 10.5897$, and if you desaturate by 10%, it is $80.6568, -0.5229, 5.8245$.

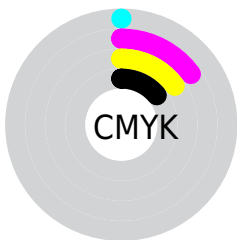
Distribution



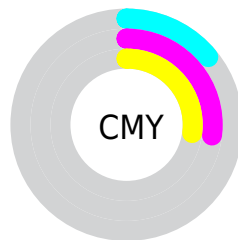
- Red (86%)
- Green (73%)
- Blue (73%)



- Red (86%)
- Yellow (73%)
- Blue (73%)



- Cyan (0%)
- Magenta (15%)
- Yellow (15%)
- Black (14%)





- Cyan (14%)
- Magenta (27%)
- Yellow (27%)

Brightness & Saturation Gradients


These gradients show how the HunterLab color 73.6895, 7.0531, 8.1538 changes by changing the brightness by 10 percent. The first figure shows a shift by +10% for each color and the second figure -10%.


Similar to the brightness gradients but the following saturation gradients show a change of the HunterLab color 73.6895, 7.0531, 8.1538 by changing the saturation by 10% instead.


 73.6895, 7.0531,
8.1538

 73.6895, 7.0531,
8.1538


200.8153, 4.4102,
16.8046

 62.3255, 7.0958,
7.2973


 98.2447, 6.7853,
9.9325

 51.6129, 7.0742,
6.4597


111.3760, 6.5743,
10.8526

 41.5959, 6.9776,
5.6410


125.0453, 6.3161,
11.7936

 32.3268, 6.7950,
4.8391

139.2321, 6.0138,
12.7553

 23.8714, 6.5114,
4.0501

153.9181, 5.6700,
13.7375

 16.3175, 6.1052,
3.2662

169.0871, 5.2868,

 9.7890, 5.5441,

14.7399

2.6127

184.7240, 4.8663,
15.7624

0.0000, INF, NaN

0.0000, NaN, NaN

■ 73.6895, 7.0531,
8.1538

■ 73.6895, 7.0531,
8.1538

■ 67.1143, 14.9734,
10.5897

■ 80.6568, -0.5229,
5.8245

■ 60.9981, 23.2330,
13.1184

■ 87.9541, -7.7703,
3.5949

■ 55.4314, 31.7479,
15.7057

■ 95.5373, -14.7283,
1.4570

■ 50.5199, 40.3158,
18.2744

■ 96.9308, -16.1834,
1.5759

■ 46.3811, 48.5569,

20.6891

■ 43.1278, 55.8949,
22.7556

■ 40.8385, 61.6477,
24.2597

■ 39.5149, 65.2765,
25.0608

■ 39.1877, 66.1852,
25.3060

Harmonies

Analogous

The Analogous color harmony consists of three colors that are next to each other on the color wheel.



73.6912, 7.9133, 2.6163



73.6895, 7.0531, 8.1538



73.6912, 3.2001, 12.2603

Triad

The Triadic color harmony groups three colors that are evenly spaced from another and form a triangle on the color wheel.



73.6912, 7.0508, 8.1550



73.6912, -12.9383, 10.3681



73.6912, -5.3825, -7.7812

Complementary

The Complementary color scheme is a pair of colors which are on the opposite of each other on the color wheel.



73.6895, 7.0531, 8.1538



81.4051, -14.1859, 0.5972

Split Complementary

Split-complementary colors differ from the complementary color scheme. The scheme consists of three colors, the original color and two neighbors of the complement color.



73.6912, -10.8103, -5.3176



73.6895, 7.0531, 8.1538



73.6912, -15.0808, 5.3794

Square

The Square scheme is like the rectangle color scheme, but the four colors are evenly spaced on the color wheel.



73.6912, 7.0508, 8.1550



73.6912, -8.3715, 13.4645



73.6912, -14.3144, -0.3881



73.6912, 0.6071, -6.8885

Rectangle

The Rectangle color scheme consists of four colors that form a rectangle on the color wheel.



73.6895, 7.0531, 8.1538



73.6912, -0.4785, 13.7812



73.6912, -14.3144, -0.3881



73.6912, -7.3307, -7.3118

Sweetspot

The Sweet Spot groups the original color and five complimentary colors.



73.6912, 7.0508, 8.1550



95.6889, -0.9790, 6.7737



74.4792, 13.2635, -7.4632



43.9934, -0.1661, 3.2221

0.0000, NaN, NaN



46.2646, -2.4686, 2.5136

Same Dimension

The Same Dimension uses a secret algorithm to generate beautiful new colors.



73.6912, 7.0508, 8.1550



84.1697, 11.7540, 10.6913



78.5757, -1.5042, 13.3386



36.2116, 1.1389, 3.1348



30.0684, 50.5429, 19.4128



7.7971, 12.3829, 5.0213

Inverse Universe

The Inverse Universe completely reimagines the original color for something new.



81.4051, -14.1859, 0.5972



95.4103, -19.2408, -0.3368



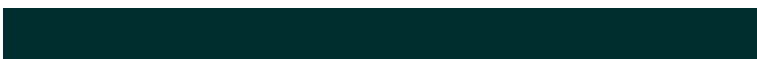
76.1917, -5.9098, -5.8447



38.4189, -4.9273, 0.9754



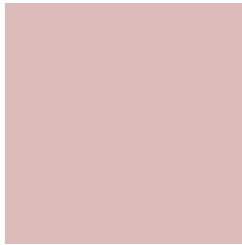
55.8043, -28.4513, -8.3323



14.2782, -7.3312, -2.0205

Previews

White Background



This preview shows how the HunterLab color 73.6895, 7.0531, 8.1538 looks on a white background.

Color Contrast Check

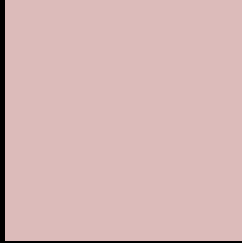
Large Text (above 18pt) WCAG AA × Fail

Any Text WCAG AA × Fail

Large Text (above 18pt) WCAG AAA × Fail

Any Text WCAG AAA × Fail

Black Background



This preview shows how the HunterLab color 73.6895, 7.0531, 8.1538 looks on a black background.

Color Contrast Check

Large Text (above 18pt) WCAG AA ✓ Pass

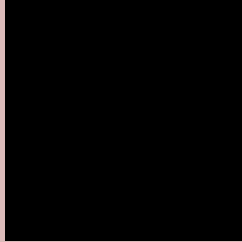
Any Text WCAG AA ✓ Pass

Large Text (above 18pt) WCAG AAA ✓ Pass

Any Text WCAG AAA ✓ Pass

If you want to check with other color combinations, try the [Color Contrast Checker](#).

HunterLab 73.6895, 7.0531, 8.1538 Background



This preview shows how black text looks on a background with the HunterLab color 73.6895, 7.0531, 8.1538.



This preview shows how white text looks on a background with the HunterLab color 73.6895, 7.0531,

8.1538.

Color Blindness Simulation

Color vision deficiency is a very complex topic, and I could not describe the different causes any better than Wikipedia does, so if you want to learn more, you should check out their [article about color blindness](#).

Dichromacy



Original Color

73.6895, 7.0531, 8.1538

Protanopia

73.7858, -2.9916, 6.2693

Deuteranopia

73.6636, 5.4814, 8.0972



Tritanopia

73.7232, 10.8873, 2.1639

Trichromacy



Original Color

73.6895, 7.0531, 8.1538

Protanomaly

73.6214, 0.9938, 6.6104

Deuteranomaly

73.7679, 5.8305, 8.2204

Tritanomaly

73.7462, 9.1897, 4.5690

Monochromacy



Original Color

73.6895, 7.0531, 8.1538

Achromatopsia

74.7222, -3.9870, 4.0598

Achromatomaly

74.1413, -0.0459, 5.3387

CSS Examples

Text

The CSS property to change the color of the text to HunterLab 73.6895, 7.0531, 8.1538 is called "color". The color property can be set on classes, ids or directly on the HTML element.

This example shows how text in the color `rgb(220, 187, 186)` looks like.

```
.text, #text, p{  
    color:rgb(220, 187, 186)  
}
```

If you want to add a text shadow in that color use the text-shadow property, you can generate a text shadow directly with our [CSS Text Shadow Generator](#).

Here you see how black text with a 4 pixel rgb(220, 187, 186) colored shadow looks like.

```
.shadow{ text-shadow: 4px 4px 2px rgb(220, 187, 186) }
```

Border

The CSS property to change the border of an element to HunterLab 73.6895, 7.0531, 8.1538 is called "border".

The border property can be set on classes, ids or directly on the HTML element.

This example shows the color as border, it can be applied via the CSS property "border" or "border-color".

```
.border, #border, table{ border:4px solid rgb(220, 187, 186) }
```


If only the border color should be changed use the property `border-color`.

```
.border{ border-color:rgb(220, 187, 186) }
```

If you want to add a box shadow in that color use:

Here you see how a box with a 4 pixel `rgb(220, 187, 186)` colored shadow looks like.

```
.boxshadow{ -moz-box-shadow:4px 4px 4px  
4px rgb(220, 187, 186); -webkit-box-  
shadow:4px 4px 4px 4px rgb(220, 187, 186);  
box-shadow:4px 4px 4px 4px rgb(220, 187,  
186) }
```

Background

The CSS property to change the background color of an element to HunterLab 73.6895, 7.0531, 8.1538 is called "background". The background property can be set on classes, ids or directly on the HTML element.

```
.background, #background, body{  
background: rgb(220, 187, 186) }
```

If only the background color should be changed can be used:

```
.background{ background-color: rgb(220,  
187, 186) }
```

This example shows the color as background, it is applied via the CSS property "background".

To optimize and compress your CSS code, you can use our [online CSS compressor and optimizer](#) based on csstidy. If you want to create a linear or radial gradient as background or border, check our [CSS Gradient Generator](#).

Hey! You found this booklet interesting? Support Converting Colors with the new Membership Option!

The pro membership hides all ads, plus gives you double the colors in the color bucket, and more awesome pro features!

[Learn more, Memberships starting at \\$2.50/m!](#)

**Follow me
on Twitter!**

@ConvertingColor