

# Converting Colors

HunterLab(73.7614, 2.2532,  
12.4746)

Have a look what the booklet for  
HunterLab(73.7614, 2.2532,  
12.4746) contains.

<b>HunterLab(73.7622, 2.2566, 12.4759)</b> .....	3
<b><i>Conversions</i></b> .....	4
<b><i>Details</i></b> .....	6
<b><i>Harmonies</i></b> .....	12
<b><i>Previews</i></b> .....	24
<b><i>Color Blindness Simulation</i></b> .....	28
<b><i>CSS Examples</i></b> .....	31

# Color

**HunterLab(73.7622, 2.2566,  
12.4759)**

# Conversions

## Conversions Part 1

Format	Color
Hex	D7BEB0
RGB	215, 190, 176
RGB Percent	84%, 75%, 69%
CMY	0.1569, 0.2549, 0.3098
CMYK	0.00, 0.12, 0.18, 0.16
HSL	22°, 33%, 77%
HSV	22°, 18%, 84%
XYZ	54.2743, 54.4086, 48.7157
YIQ	195.8790, 19.3940, 0.9460

# Conversions

## Conversions Part 2

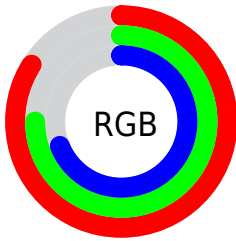
<b>Format</b>	<b>Color</b>
<b>R<sub>YB</sub></b>	215, 198, 176
Decimal	14139056
CIE Lab	78.70, 6.63, 10.31
CIE LCh	79, 12.254, 57.267
Yxy	54.4111, 0.3448, 0.3457
Android (android.graphics.Color)	4292329136 (0xFFD7BEB0)
YUV	195.8790, -9.8003, 16.7691
Hunter-Lab	73.7622, 2.2566, 12.4759

# Details

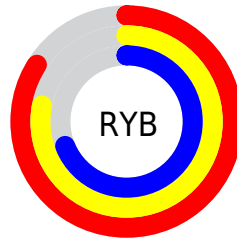
The HunterLab color  $73.7622, 2.2566, 12.4759$  is a light color, and the websafe version is hex `CCCCCC`. A complement of this color would be  $74.7719, -8.9656, -5.0616$ , and the grayscale version is  $74.2820, -3.9635, 4.0359$ .

A 20% lighter version of the original color is  $96.4353, -4.4664, 12.4073$ , and  $51.7882, 2.7115, 10.1281$  is the 20% darker color. If you saturate the color by 10%, you get  $69.2360, 6.3742, 16.4065$ , and if you desaturate by 10%, it is  $78.4762, -1.5366, 8.1928$ .

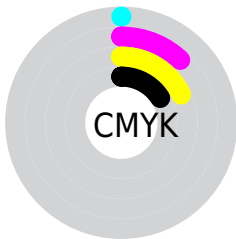
# Distribution



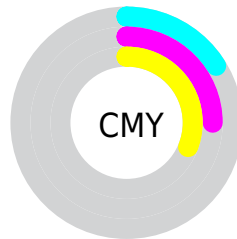
- Red (84%)
- Green (75%)
- Blue (69%)



- Red (84%)
- Yellow (78%)
- Blue (69%)



- Cyan (0%)
- Magenta (12%)
- Yellow (18%)
- Black (16%)



- Cyan (16%)
- Magenta (25%)
- Yellow (31%)

# Brightness & Saturation Gradients

These gradients show how the HunterLab color 73.7622, 2.2566, 12.4759 changes by changing the brightness by 10 percent. The first figure shows a shift by +10% for each color and the second figure -10%.

Similar to the brightness gradients but the following saturation gradients show a change of the HunterLab color 73.7622, 2.2566, 12.4759 by changing the saturation by 10% instead.



■ 73.7622, 2.2566,  
12.4759

■ 73.7622, 2.2566,  
12.4759

200.9168, -2.1486,  
23.1290

■ 62.3942, 2.5366,  
11.3382

■ 98.3247, 1.5461,  
14.7698

■ 51.6774, 2.7650,  
10.1994

111.4595, 1.1271,  
15.9285

■ 41.6560, 2.9334,  
9.0548

125.1320, 0.6685,  
17.0976

■ 32.3820, 3.0338,  
7.8955

139.3219, 0.1727,  
18.2782

■ 23.9214, 3.0552,  
6.7068

154.0111, -0.3586,  
19.4711

■ 16.3615, 2.9813,  
5.4636

169.1830, -0.9235,

■ 9.8261, 2.7855,

20.6770

4.8985

184.8227, -1.5206,  
21.8961

0.0000, INF, NaN

0.0000, NaN, NaN

■ 73.7622, 2.2566,  
12.4759

■ 73.7622, 2.2566,  
12.4759

■ 69.2360, 6.3742,  
16.4065

■ 78.4762, -1.5366,  
8.1928

■ 64.9143, 10.8474,  
19.9216

■ 83.3542, -5.0265,  
3.6037

■ 60.8238, 15.6896,  
22.9528

■ 88.3817, -8.2438,  
-1.2492

■ 56.9926, 20.9011,  
25.4214

■ 93.2992, -12.5811,  
-2.8513

■ 53.4521, 26.4567,

■ 96.5335, -17.6135,

27.2446

1.0679

■ 50.2355, 32.2928,  
28.3460

■ 47.3757, 38.2934,  
28.6763

■ 44.8990, 44.2647,  
28.2898

■ 44.4785, 45.3375,  
28.2011

# Harmonies

## Analogous

The Analogous color harmony consists of three colors that are next to each other on the color wheel.



73.7639, 6.3487, 8.7603



73.7622, 2.2566, 12.4759



73.7639, -3.4016, 13.9421

# Triad

The Triadic color harmony groups three colors that are evenly spaced from another and form a triangle on the color wheel.



73.7639, 2.2543, 12.4770



73.7639, -14.8639, 4.5246



73.7639, 1.2953, -6.1654

# Complementary

The Complementary color scheme is a pair of colors which are on the opposite of each other on the color wheel.



73.7622, 2.2566, 12.4759



74.7719, -8.9656, -5.0616

# Split Complementary

Split-complementary colors differ from the complementary color scheme. The scheme consists of three colors, the original color and two neighbors of the complement color.



73.7639, -4.4765, -7.5176



73.7622, 2.2566, 12.4759



73.7639, -13.6936, -1.0678

# Square

The Square scheme is like the rectangle color scheme, but the four colors are evenly spaced on the color wheel.



73.7639, 2.2543, 12.4770



73.7639, -13.1837, 9.5807



73.7639, -9.9361, -5.5855



73.7639, 5.7829, -2.0210



# Rectangle

The Rectangle color scheme consists of four colors that form a rectangle on the color wheel.



73.7622, 2.2566, 12.4759



73.7639, -7.2556, 13.5376



73.7639, -9.9361, -5.5855



73.7639, -0.5644, -6.9750

# Sweetspot

The Sweet Spot groups the original color and five complimentary colors.



73.7639, 2.2543, 12.4770



97.0064, -3.2098, 8.2551



70.5209, 13.6106, -2.9473



44.6868, -1.3435, 3.9994

0.0000, NaN, NaN



46.2646, -2.4686, 2.5136



# Same Dimension

The Same Dimension uses a secret algorithm to generate beautiful new colors.



73.7639, 2.2543, 12.4770



87.2153, 4.7210, 17.1335



79.5341, -7.4462, 18.2581



36.2538, -0.4977, 4.0783



34.6641, 34.3415, 21.9610



9.3758, 6.2468, 5.8867

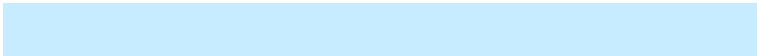


# Inverse Universe

The Inverse Universe completely reimagines the original color for something new.



74.7719, -8.9656, -5.0616



88.7031, -11.8646, -8.7860



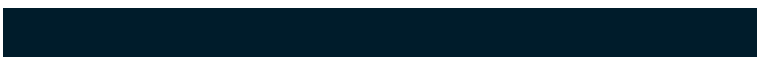
68.9432, 0.6952, -12.7940



36.5004, -3.2368, -0.2049



37.3885, -4.0404, -38.0104



9.9864, -2.2359, -7.6554



# Previews

## White Background



This preview shows how the HunterLab color 73.7622, 2.2566, 12.4759 looks on a white background.

## Color Contrast Check

Large Text (above 18pt) WCAG AA × Fail

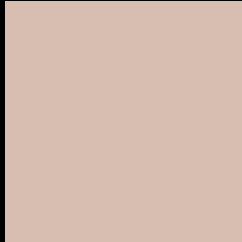
Any Text WCAG AA × Fail

Large Text (above 18pt) WCAG AAA × Fail

Any Text WCAG AAA × Fail



# Black Background



This preview shows how the HunterLab color 73.7622, 2.2566, 12.4759 looks on a black background.

## Color Contrast Check

Large Text (above 18pt) WCAG AA ✓ Pass

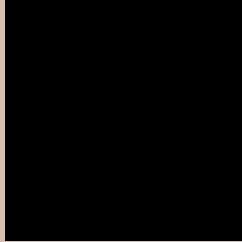
Any Text WCAG AA ✓ Pass

Large Text (above 18pt) WCAG AAA ✓ Pass

Any Text WCAG AAA ✓ Pass

If you want to check with other color combinations, try the [Color Contrast Checker](#).

## HunterLab 73.7622, 2.2566, 12.4759 Background



This preview shows how black text looks on a background with the HunterLab color 73.7622, 2.2566, 12.4759.



This preview shows how white text looks on a background with the HunterLab color 73.7622, 2.2566,



# Color Blindness Simulation

Color vision deficiency is a very complex topic, and I could not describe the different causes any better than Wikipedia does, so if you want to learn more, you should check out their [article about color blindness](#).

## Dichromacy



### Original Color

73.7622, 2.2566, 12.4759

### Protanopia

73.7255, -3.8833, 11.4889

### Deuteranopia

73.6998, 5.0456, 12.4584



## Tritanopia

73.6480, 9.3026, 1.0589

# Trichromacy



## Original Color

73.7622, 2.2566, 12.4759

## Protanomaly

73.8780, -1.8642, 12.1091

## Deuteranomaly

73.7802, 3.8217, 12.5225

## Tritanomaly

73.5514, 6.9473, 5.2440

# Monochromacy



## Original Color

73.7622, 2.2566, 12.4759

## Achromatopsia

74.2975, -3.9643, 4.0367

## Achromatomaly

74.1311, -1.8564, 7.1411

# CSS Examples

## Text

The CSS property to change the color of the text to HunterLab 73.7622, 2.2566, 12.4759 is called "color". The color property can be set on classes, ids or directly on the HTML element.

This example shows how text in the color `rgb(215, 190, 176)` looks like.

```
.text, #text, p{  
    color:rgb(215, 190, 176)  
}
```

If you want to add a text shadow in that color use the text-shadow property, you can generate a text shadow directly with our [CSS Text Shadow Generator](#).

Here you see how black text with a 4 pixel rgb(215, 190, 176) colored shadow looks like.

```
.shadow{ text-shadow: 4px 4px 2px rgb(215, 190, 176) }
```

## Border

The CSS property to change the border of an element to HunterLab 73.7622, 2.2566, 12.4759 is called "border". The border property can be set on classes, ids or directly on the HTML element.

This example shows the color as border, it can be applied via the CSS property "border" or "border-color".

```
.border, #border, table{ border:4px solid rgb(215, 190, 176) }
```



If only the border color should be changed use the property `border-color`.

```
.border{ border-color:rgb(215, 190, 176) }
```

If you want to add a box shadow in that color use:

Here you see how a box with a 4 pixel `rgb(215, 190, 176)` colored shadow looks like.

```
.boxshadow{ -moz-box-shadow:4px 4px 4px  
4px rgb(215, 190, 176); -webkit-box-  
shadow:4px 4px 4px 4px rgb(215, 190, 176);  
box-shadow:4px 4px 4px 4px rgb(215, 190,  
176) }
```

# Background

The CSS property to change the background color of an element to HunterLab 73.7622, 2.2566, 12.4759 is called "background". The background property can be set on classes, ids or directly on the HTML element.

```
.background, #background, body{  
background: rgb(215, 190, 176) }
```

If only the background color should be changed can be used:

```
.background{ background-color: rgb(215,  
190, 176) }
```

This example shows the color as background, it is applied via the CSS property "background".

To optimize and compress your CSS code, you can use our [online CSS compressor and optimizer](#) based on csstidy. If you want to create a linear or radial gradient as background or border, check our [CSS Gradient Generator](#).

Hey! You found this booklet interesting? Support Converting Colors with the new Membership Option!

The pro membership hides all ads, plus gives you double the colors in the color bucket, and more awesome pro features!

**[Learn more, Memberships starting at \\$2.50/m!](#)**

**Follow me  
on Twitter!**

@ConvertingColor