

Converting Colors

HunterLab(73.7912, 7.6748,
7.9010)

Have a look what the booklet for
HunterLab(73.7912, 7.6748, 7.9010)
contains.

HunterLab(73.8246, 7.5601, 7.8650)	3
<i>Conversions</i>	4
<i>Details</i>	6
<i>Harmonies</i>	12
<i>Previews</i>	24
<i>Color Blindness Simulation</i>	28
<i>CSS Examples</i>	31

Color

**HunterLab(73.8246, 7.5601,
7.8650)**

Conversions

Conversions Part 1

Format	Color
Hex	DDBBBB
RGB	221, 187, 187
RGB Percent	87%, 73%, 73%
CMY	0.1333, 0.2666, 0.2667
CMYK	0.00, 0.15, 0.15, 0.13
HSL	0°, 33%, 80%
HSV	0°, 15%, 87%
XYZ	56.5588, 54.5007, 54.5525
YIQ	197.1660, 20.2640, 7.2080

Conversions

Conversions Part 2

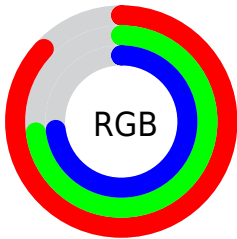
Format	Color
R _Y B	221, 187, 187
Decimal	14531515
CIE Lab	78.75, 12.14, 4.52
CIE LCh	79, 12.951, 20.428
Yxy	54.5032, 0.3415, 0.3291
Android (android.graphics.Color)	4292721595 (0xFFDDBBBB)
YUV	197.1660, -5.0118, 20.9024
Hunter-Lab	73.8246, 7.5601, 7.8650

Details

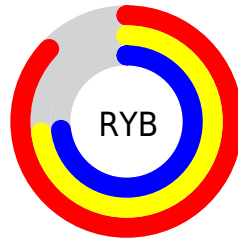
The HunterLab color $73.8246, 7.5601, 7.8650$ is a light color, and the websafe version is hex FFCCCC . A complement of this color would be $82.1564, -14.7145, 0.9992$, and the grayscale version is $74.8087, -3.9916, 4.0645$.

A 20% lighter version of the original color is $95.8291, -1.0494, 6.5686$, and $51.8444, 7.5838, 6.2857$ is the 20% darker color. If you saturate the color by 10%, you get $67.0540, 15.8640, 10.1620$, and if you desaturate by 10%, it is $81.0137, -0.3952, 5.7186$.

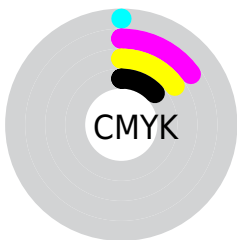
Distribution



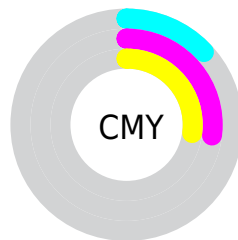
- Red (87%)
- Green (73%)
- Blue (73%)



- Red (87%)
- Yellow (73%)
- Blue (73%)



- Cyan (0%)
- Magenta (15%)
- Yellow (15%)
- Black (13%)





- Cyan (13%)
- Magenta (27%)
- Yellow (27%)

Brightness & Saturation Gradients


These gradients show how the HunterLab color 73.8246, 7.5601, 7.8650 changes by changing the brightness by 10 percent. The first figure shows a shift by +10% for each color and the second figure -10%.


Similar to the brightness gradients but the following saturation gradients show a change of the HunterLab color 73.8246, 7.5601, 7.8650 by changing the saturation by 10% instead.


 73.8246, 7.5601,
7.8650

 73.8246, 7.5601,
7.8650


201.0039, 5.0945,
16.3873

 62.4532, 7.5792,
7.0265


 98.3934, 7.3365,
9.6108

 51.7329, 7.5328,
6.2080


111.5311, 7.1464,
10.5156

 41.7076, 7.4100,
5.4101


125.2064, 6.9084,
11.4419

 32.4294, 7.1998,
4.6308

139.3991, 6.6256,
12.3896

 23.9643, 6.8867,
3.8671

154.0908, 6.3007,
13.3582

 16.3993, 6.4491,
3.1124

169.2653, 5.9359,

 9.8580, 5.8544,

14.3476

2.4547

184.9075, 5.5332,
15.3574

0.0000, INF, NaN

0.0000, NaN, NaN

■ 73.8246, 7.5601,
7.8650

■ 73.8246, 7.5601,
7.8650

■ 67.0540, 15.8640,
10.1620

■ 81.0137, -0.3952,
5.7186

■ 60.7762, 24.5026,
12.6047

■ 88.5536, -8.0152,
3.7079

■ 55.0913, 33.3697,
15.1666

■ 96.3962, -15.3398,
1.8180

■ 50.1164, 42.2191,
17.7734

■ 97.0115, -15.8937,
1.6789

■ 45.9800, 50.6005,

20.2835

■ 42.8019, 57.8529,
22.4840

■ 40.6555, 63.2436,
24.1347

■ 39.5178, 66.2885,
25.0717

■ 39.2082, 67.1416,
25.3353

Harmonies

Analogous

The Analogous color harmony consists of three colors that are next to each other on the color wheel.



73.8263, 8.1773, 2.1088



73.8246, 7.5601, 7.8650



73.8263, 3.8017, 12.2325

Triad

The Triadic color harmony groups three colors that are evenly spaced from another and form a triangle on the color wheel.



73.8263, 7.5578, 7.8662



73.8263, -12.9050, 10.8807



73.8263, -5.9140, -8.0547

Complementary

The Complementary color scheme is a pair of colors which are on the opposite of each other on the color wheel.



73.8246, 7.5601, 7.8650



82.1564, -14.7145, 0.9992

Split Complementary

Split-complementary colors differ from the complementary color scheme. The scheme consists of three colors, the original color and two neighbors of the complement color.



73.8263, -11.3814, -5.2632



73.8246, 7.5601, 7.8650



73.8263, -15.3289, 5.8786

Square

The Square scheme is like the rectangle color scheme, but the four colors are evenly spaced on the color wheel.



73.8263, 7.5578, 7.8662



73.8263, -8.0560, 13.8708



73.8263, -14.7805, -0.0480



73.8263, 0.2618, -7.4118

Rectangle

The Rectangle color scheme consists of four colors that form a rectangle on the color wheel.



73.8246, 7.5601, 7.8650



73.8263, 0.0909, 13.9204



73.8263, -14.7805, -0.0480



73.8263, -7.8924, -7.4787

Sweetspot

The Sweet Spot groups the original color and five complimentary colors.



73.8263, 7.5578, 7.8662



95.5719, -0.7794, 6.6413



74.9227, 13.3597, -7.7331



43.9318, -0.0607, 3.1526

0.0000, NaN, NaN



46.2646, -2.4686, 2.5136

Same Dimension

The Same Dimension uses a secret algorithm to generate beautiful new colors.



73.8263, 7.5578, 7.8662



84.5701, 11.5426, 9.9783



78.8330, -1.2362, 13.1954



36.1272, 1.2864, 3.0406



29.8837, 51.1730, 19.3101



7.6068, 13.0230, 4.9153

Inverse Universe

The Inverse Universe completely reimagines the original color for something new.



82.1564, -14.7145, 0.9992



96.0763, -19.2580, 0.4809



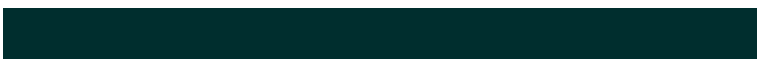
76.7931, -6.2229, -5.6048



38.5089, -5.0699, 1.0811



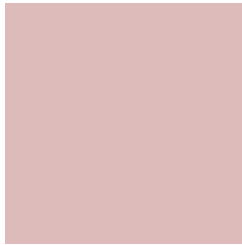
57.5028, -30.4808, -6.0742



14.6364, -7.7586, -1.5457

Previews

White Background



This preview shows how the HunterLab color 73.8246, 7.5601, 7.8650 looks on a white background.

Color Contrast Check

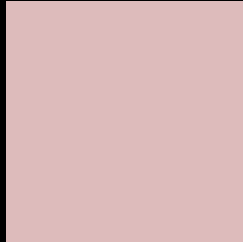
Large Text (above 18pt) WCAG AA × Fail

Any Text WCAG AA × Fail

Large Text (above 18pt) WCAG AAA × Fail

Any Text WCAG AAA × Fail

Black Background



This preview shows how the HunterLab color 73.8246, 7.5601, 7.8650 looks on a black background.

Color Contrast Check

Large Text (above 18pt) WCAG AA ✓ Pass

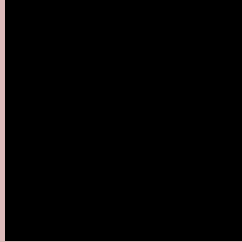
Any Text WCAG AA ✓ Pass

Large Text (above 18pt) WCAG AAA ✓ Pass

Any Text WCAG AAA ✓ Pass

If you want to check with other color combinations, try the [Color Contrast Checker](#).

HunterLab 73.8246, 7.5601, 7.8650 Background



This preview shows how black text looks on a background with the HunterLab color 73.8246, 7.5601, 7.8650.



This preview shows how white text looks on a background with the HunterLab color 73.8246, 7.5601,

7.8650.

Color Blindness Simulation

Color vision deficiency is a very complex topic, and I could not describe the different causes any better than Wikipedia does, so if you want to learn more, you should check out their [article about color blindness](#).

Dichromacy



Original Color

73.8246, 7.5601, 7.8650

Protanopia

73.8155, -2.8292, 5.8444

Deuteranopia

73.9829, 5.1173, 8.0007



Tritanopia

73.8305, 11.2389, 2.2994

Trichromacy



Original Color

73.8246, 7.5601, 7.8650

Protanomaly

73.6510, 1.1539, 6.1872

Deuteranomaly

73.7968, 5.9851, 7.8062

Tritanomaly

73.8834, 9.7031, 4.2646

Monochromacy



Original Color

73.8246, 7.5601, 7.8650

Achromatopsia

74.7222, -3.9870, 4.0598

Achromatomaly

74.2375, 0.2833, 5.4560

CSS Examples

Text

The CSS property to change the color of the text to HunterLab 73.8246, 7.5601, 7.8650 is called "color". The color property can be set on classes, ids or directly on the HTML element.

This example shows how text in the color `rgb(221, 187, 187)` looks like.

```
.text, #text, p{  
    color:rgb(221, 187, 187)  
}
```

If you want to add a text shadow in that color use the text-shadow property, you can generate a text shadow directly with our [CSS Text Shadow Generator](#).

Here you see how black text with a 4 pixel rgb(221, 187, 187) colored shadow looks like.

```
.shadow{ text-shadow: 4px 4px 2px rgb(221, 187, 187) }
```

Border

The CSS property to change the border of an element to HunterLab 73.8246, 7.5601, 7.8650 is called "border". The border property can be set on classes, ids or directly on the HTML element.

This example shows the color as border, it can be applied via the CSS property "border" or "border-color".

```
.border, #border, table{ border:4px solid rgb(221, 187, 187) }
```


If only the border color should be changed use the property `border-color`.

```
.border{ border-color:rgb(221, 187, 187) }
```

If you want to add a box shadow in that color use:

Here you see how a box with a 4 pixel `rgb(221, 187, 187)` colored shadow looks like.

```
.boxshadow{ -moz-box-shadow:4px 4px 4px  
4px rgb(221, 187, 187); -webkit-box-  
shadow:4px 4px 4px 4px rgb(221, 187, 187);  
box-shadow:4px 4px 4px 4px rgb(221, 187,  
187) }
```

Background

The CSS property to change the background color of an element to HunterLab 73.8246, 7.5601, 7.8650 is called "background". The background property can be set on classes, ids or directly on the HTML element.

```
.background, #background, body{  
background: rgb(221, 187, 187) }
```

If only the background color should be changed can be used:

```
.background{ background-color: rgb(221,  
187, 187) }
```

This example shows the color as background, it is applied via the CSS property "background".

To optimize and compress your CSS code, you can use our [online CSS compressor and optimizer](#) based on csstidy. If you want to create a linear or radial gradient as background or border, check our [CSS Gradient Generator](#).

Hey! You found this booklet interesting? Support Converting Colors with the new Membership Option!

The pro membership hides all ads, plus gives you double the colors in the color bucket, and more awesome pro features!

[Learn more, Memberships starting at \\$2.50/m!](#)

**Follow me
on Twitter!**

@ConvertingColor