

Converting Colors

HunterLab(73.8810, -0.0077,
12.8642)

Have a look what the booklet for
HunterLab(73.8810, -0.0077,
12.8642) contains.

HunterLab(73.9211, -0.2907, 13.0148)	3
<i>Conversions</i>	4
<i>Details</i>	6
<i>Harmonies</i>	12
<i>Previews</i>	24
<i>Color Blindness Simulation</i>	28
<i>CSS Examples</i>	31

Color

**HunterLab(73.9211, -0.2907,
13.0148)**

Conversions

Conversions Part 1

Format	Color
Hex	D3C0AF
RGB	211, 192, 175
RGB Percent	83%, 75%, 69%
CMY	0.1725, 0.2470, 0.3137
CMYK	0.00, 0.09, 0.17, 0.17
HSL	28°, 29%, 76%
HSV	28°, 17%, 83%
XYZ	53.4515, 54.6433, 48.2874
YIQ	195.7430, 16.7810, -1.2590

Conversions

Conversions Part 2

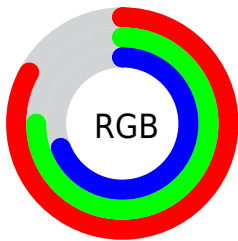
Format	Color
R _Y B	211, 207, 175
Decimal	13877423
CIE Lab	78.84, 3.93, 10.99
CIE LCh	79, 11.675, 70.311
Yxy	54.6457, 0.3418, 0.3494
Android (android.graphics.Color)	4292067503 (0xFFD3C0AF)
YUV	195.7430, -10.2263, 13.3804
Hunter-Lab	73.9211, -0.2907, 13.0148

Details

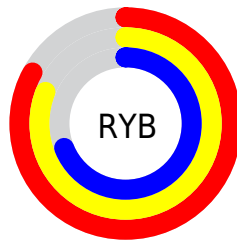
The HunterLab color $73.9211, -0.2907, 13.0148$ is a light color, and the websafe version is hex `CCCCCC`. A complement of this color would be $72.3875, -6.5186, -5.9869$, and the grayscale version is $74.2268, -3.9606, 4.0329$.

A 20% lighter version of the original color is $97.0383, -5.6780, 13.5031$, and $51.9261, 0.2872, 10.6053$ is the 20% darker color. If you saturate the color by 10%, you get $70.1244, 2.4853, 17.4418$, and if you desaturate by 10%, it is $77.8567, -2.7507, 8.1102$.

Distribution



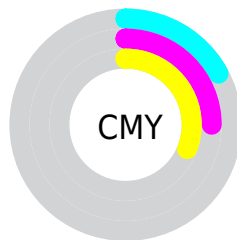
- Red (83%)
- Green (75%)
- Blue (69%)



- Red (83%)
- Yellow (81%)
- Blue (69%)



- Cyan (0%)
- Magenta (9%)
- Yellow (17%)
- Black (17%)



- Cyan (17%)
- Magenta (25%)
- Yellow (31%)

Brightness & Saturation Gradients

These gradients show how the HunterLab color 73.9211, -0.2907, 13.0148 changes by changing the brightness by 10 percent. The first figure shows a shift by +10% for each color and the second figure -10%.

Similar to the brightness gradients but the following saturation gradients show a change of the HunterLab color 73.9211, -0.2907, 13.0148 by changing the saturation by 10% instead.

■ 73.9211, -0.2907,
13.0148

■ 73.9211, -0.2907,
13.0148

201.1387, -5.6637,
23.9270

■ 62.5445, 0.1206,
11.8405

■ 98.4996, -1.2453,
15.3754

■ 51.8186, 0.4878,
10.6627

111.6418, -1.7787,
16.5651

■ 41.7874, 0.8039,
9.4757

125.3215, -2.3473,
17.7637

■ 32.5028, 1.0631,
8.2699

139.5183, -2.9494,
18.9726

■ 24.0306, 1.2569,
7.0294

154.2141, -3.5834,
20.1928

■ 16.4577, 1.3732,
5.7267

169.3925, -4.2479,

■ 9.9073, 1.3925,

21.4249

5.1597

185.0385, -4.9417,
22.6695

0.0000, NaN, NaN

0.0000, NaN, NaN

■ 73.9211, -0.2907,
13.0148

■ 73.9211, -0.2907,
13.0148

■ 70.1244, 2.4853,
17.4418

■ 77.8567, -2.7507,
8.1102

■ 66.4742, 5.6067,
21.3313

■ 81.9149, -4.9125,
2.7757

■ 62.9861, 9.0906,
24.6231

■ 86.0873, -6.8025,
-2.9424

■ 59.6753, 12.9493,
27.2541

■ 90.2061, -9.3212,
-6.7617

■ 56.5581, 17.1836,

■ 93.8102, -15.0253,

29.1636

-2.2517

■ 53.6510, 21.7768,
30.3024

■ 96.2232, -18.7349,
0.6697

■ 50.9703, 26.6866,
30.6473

■ 48.5285, 31.8299,
30.2427

■ 47.8527, 33.3451,
30.0704

Harmonies

Analogous

The Analogous color harmony consists of three colors that are next to each other on the color wheel.



73.9228, 4.4257, 10.3362



73.9211, -0.2907, 13.0148



73.9228, -5.8619, 13.3910

Triad

The Triadic color harmony groups three colors that are evenly spaced from another and form a triangle on the color wheel.



73.9228, -0.2929, 13.0159



73.9228, -14.2263, 2.1706



73.9228, 3.1328, -4.2032

Complementary

The Complementary color scheme is a pair of colors which are on the opposite of each other on the color wheel.



73.9211, -0.2907, 13.0148



72.3875, -6.5186, -5.9869

Split Complementary

Split-complementary colors differ from the complementary color scheme. The scheme consists of three colors, the original color and two neighbors of the complement color.



73.9228, -2.0150, -6.7564



73.9211, -0.2907, 13.0148



73.9228, -11.9653, -2.8995

Square

The Square scheme is like the rectangle color scheme, but the four colors are evenly spaced on the color wheel.



73.9228, -0.2929, 13.0159



73.9228, -13.7963, 7.3856



73.9228, -7.5340, -6.2623



73.9228, 6.4438, 0.4963

Rectangle

The Rectangle color scheme consists of four colors that form a rectangle on the color wheel.



73.9211, -0.2907, 13.0148



73.9228, -9.2939, 12.3159



73.9228, -7.5340, -6.2623



73.9228, 1.5536, -5.3562

Sweetspot

The Sweet Spot groups the original color and five complimentary colors.



73.9228, -0.2929, 13.0159



97.4619, -3.9741, 8.7629



69.5799, 11.5195, -0.5155



44.9267, -1.7467, 4.2658

0.0000, NaN, NaN



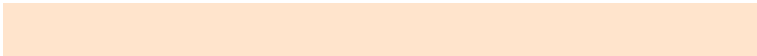
46.2646, -2.4686, 2.5136

Same Dimension

The Same Dimension uses a secret algorithm to generate beautiful new colors.



73.9228, -0.2929, 13.0159



90.0863, 0.6793, 17.9249



79.3341, -9.2369, 18.4126



35.6594, -1.0210, 4.3109



37.4450, 25.2544, 23.5156



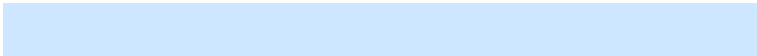
9.7072, 4.0485, 6.0524

Inverse Universe

The Inverse Universe completely reimagines the original color for something new.



72.3875, -6.5186, -5.9869



87.8404, -8.4201, -9.8784



67.0425, 2.4938, -13.1470



35.2639, -2.6272, -0.5834



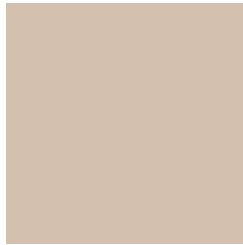
31.5450, 5.0723, -50.3781



8.4538, -0.5472, -9.3852

Previews

White Background



This preview shows how the HunterLab color 73.9211, -0.2907, 13.0148 looks on a white background.

Color Contrast Check

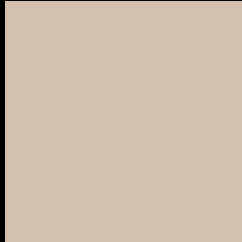
Large Text (above 18pt) WCAG AA × Fail

Any Text WCAG AA × Fail

Large Text (above 18pt) WCAG AAA × Fail

Any Text WCAG AAA × Fail

Black Background



This preview shows how the HunterLab color 73.9211, -0.2907, 13.0148 looks on a black background.

Color Contrast Check

Large Text (above 18pt) WCAG AA ✓ Pass

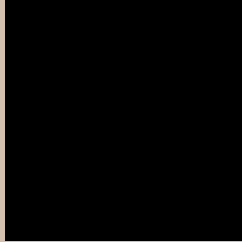
Any Text WCAG AA ✓ Pass

Large Text (above 18pt) WCAG AAA ✓ Pass

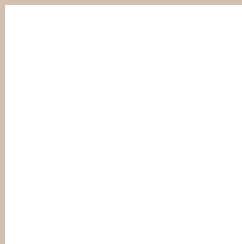
Any Text WCAG AAA ✓ Pass

If you want to check with other color combinations, try the [Color Contrast Checker](#).

HunterLab 73.9211, -0.2907, 13.0148 Background



This preview shows how black text looks on a background with the HunterLab color 73.9211, -0.2907, 13.0148.



This preview shows how white text looks on a background with the HunterLab color 73.9211, -0.2907,

Color Blindness Simulation

Color vision deficiency is a very complex topic, and I could not describe the different causes any better than Wikipedia does, so if you want to learn more, you should check out their [article about color blindness](#).

Dichromacy



Original Color

73.9211, -0.2907, 13.0148

Protanopia

74.0684, -4.3509, 12.6855

Deuteranopia

73.8059, 5.4015, 12.5775



Tritanopia

73.9766, 7.5640, 0.4334

Trichromacy



Original Color

73.9211, -0.2907, 13.0148

Protanomaly

74.0540, -2.8511, 12.6964

Deuteranomaly

73.6760, 3.4699, 12.4054

Tritanomaly

73.8523, 5.0337, 5.0917

Monochromacy



Original Color

73.9211, -0.2907, 13.0148

Achromatopsia

74.2975, -3.9643, 4.0367

Achromatomaly

74.2149, -3.1724, 7.6663

CSS Examples

Text

The CSS property to change the color of the text to HunterLab 73.9211, -0.2907, 13.0148 is called "color". The color property can be set on classes, ids or directly on the HTML element.

This example shows how text in the color `rgb(211, 192, 175)` looks like.

```
.text, #text, p{  
    color:rgb(211, 192, 175)  
}
```

If you want to add a text shadow in that color use the text-shadow property, you can generate a text shadow directly with our [CSS Text Shadow Generator](#).

Here you see how black text with a 4 pixel rgb(211, 192, 175) colored shadow looks like.

```
.shadow{ text-shadow: 4px 4px 2px rgb(211, 192, 175) }
```

Border

The CSS property to change the border of an element to HunterLab 73.9211, -0.2907, 13.0148 is called "border". The border property can be set on classes, ids or directly on the HTML element.

This example shows the color as border, it can be applied via the CSS property "border" or "border-color".

```
.border, #border, table{ border:4px solid rgb(211, 192, 175) }
```


If only the border color should be changed use the property `border-color`.

```
.border{ border-color:rgb(211, 192, 175) }
```

If you want to add a box shadow in that color use:

Here you see how a box with a 4 pixel `rgb(211, 192, 175)` colored shadow looks like.

```
.boxshadow{ -moz-box-shadow:4px 4px 4px  
4px rgb(211, 192, 175); -webkit-box-  
shadow:4px 4px 4px 4px rgb(211, 192, 175);  
box-shadow:4px 4px 4px 4px rgb(211, 192,  
175) }
```

Background

The CSS property to change the background color of an element to HunterLab 73.9211, -0.2907, 13.0148 is called "background". The background property can be set on classes, ids or directly on the HTML element.

```
.background, #background, body{  
background: rgb(211, 192, 175) }
```

If only the background color should be changed can be used:

```
.background{ background-color: rgb(211,  
192, 175) }
```

This example shows the color as background, it is applied via the CSS property "background".

To optimize and compress your CSS code, you can use our [online CSS compressor and optimizer](#) based on csstidy. If you want to create a linear or radial gradient as background or border, check our [CSS Gradient Generator](#).

Hey! You found this booklet interesting? Support Converting Colors with the new Membership Option!

The pro membership hides all ads, plus gives you double the colors in the color bucket, and more awesome pro features!

[Learn more, Memberships starting at \\$2.50/m!](#)

**Follow me
on Twitter!**

@ConvertingColor