

Converting Colors

HunterLab(73.8810, 3.2490,
11.2387)

Have a look what the booklet for
HunterLab(73.8810, 3.2490,
11.2387) contains.

HunterLab(73.9463, 3.0432, 11.4237)	3
<i>Conversions</i>	4
<i>Details</i>	6
<i>Harmonies</i>	12
<i>Previews</i>	24
<i>Color Blindness Simulation</i>	28
<i>CSS Examples</i>	31

Color

**HunterLab(73.9463, 3.0432,
11.4237)**

Conversions

Conversions Part 1

Format	Color
Hex	D8BEB3
RGB	216, 190, 179
RGB Percent	85%, 75%, 70%
CMY	0.1529, 0.2549, 0.2980
CMYK	0.00, 0.12, 0.17, 0.15
HSL	18°, 32%, 77%
HSV	18°, 17%, 85%
XYZ	54.8691, 54.6806, 50.3103
YIQ	196.5200, 19.0270, 2.0910

Conversions

Conversions Part 2

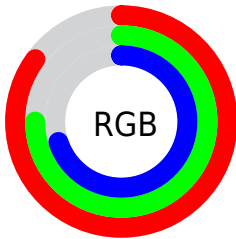
Format	Color
R _Y B	216, 195, 179
Decimal	14204595
CIE Lab	78.86, 7.46, 8.93
CIE LCh	79, 11.633, 50.132
Yxy	54.6830, 0.3432, 0.3421
Android (android.graphics.Color)	4292394675 (0xFFD8BEB3)
YUV	196.5200, -8.6374, 17.0840
Hunter-Lab	73.9463, 3.0432, 11.4237

Details

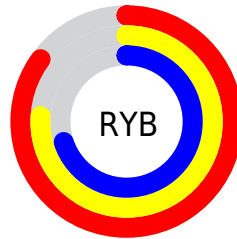
The HunterLab color $73.9463, 3.0432, 11.4237$ is a light color, and the websafe version is hex `CCCCCC`. A complement of this color would be $76.2908, -9.9336, -3.6529$, and the grayscale version is $74.5495, -3.9778, 4.0504$.

A 20% lighter version of the original color is $96.5244, -3.9790, 11.1300$, and $51.9372, 3.3120, 9.5284$ is the 20% darker color. If you saturate the color by 10%, you get $69.0222, 7.8347, 15.1131$, and if you desaturate by 10%, it is $79.0866, -1.4237, 7.4655$.

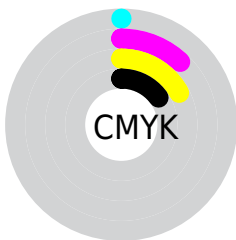
Distribution



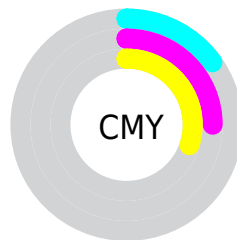
- Red (85%)
- Green (75%)
- Blue (70%)



- Red (85%)
- Yellow (76%)
- Blue (70%)



- Cyan (0%)
- Magenta (12%)
- Yellow (17%)
- Black (15%)



- Cyan (15%)
- Magenta (25%)
- Yellow (30%)

Brightness & Saturation Gradients

These gradients show how the HunterLab color 73.9463, 3.0432, 11.4237 changes by changing the brightness by 10 percent. The first figure shows a shift by +10% for each color and the second figure -10%.

Similar to the brightness gradients but the following saturation gradients show a change of the HunterLab color 73.9463, 3.0432, 11.4237 by changing the saturation by 10% instead.

73.9463, 3.0432,
11.4237

73.9463, 3.0432,
11.4237

201.1739, -1.0720,
21.5624

62.5683, 3.2841,
10.3588

98.5273, 2.4056,
13.5846

51.8410, 3.4713,
9.2982

111.6707, 2.0208,
14.6819

41.8082, 3.5960,
8.2385

125.3515, 1.5952,
15.7924

32.5220, 3.6497,
7.1726

139.5495, 1.1312,
16.9168

24.0479, 3.6206,
6.0889

154.2463, 0.6308,
18.0557

16.4730, 3.4914,
4.9671

169.4257, 0.0958,

9.9202, 3.2345,

19.2094

4.2933

185.0728, -0.4723,
20.3783

0.0000, INF, NaN

0.0000, NaN, NaN

■ 73.9463, 3.0432,
11.4237

■ 73.9463, 3.0432,
11.4237

■ 69.0222, 7.8347,
15.1131

■ 79.0866, -1.4237,
7.4655

■ 64.3370, 12.9811,
18.4743

■ 84.4144, -5.5882,
3.2797

■ 59.9249, 18.4911,
21.4388

■ 89.9117, -9.4830,
-1.0975

■ 55.8232, 24.3529,
23.9234

■ 95.2008, -15.1485,
-0.5235

■ 52.0739, 30.5170,

■ 96.6121, -17.3300,

25.8344

1.1686

■ 48.7219, 36.8791,
27.0776

■ 45.8120, 43.2619,
27.5808

■ 43.3814, 49.4008,
27.3529

■ 42.7704, 51.0487,
27.2486

Harmonies

Analogous

The Analogous color harmony consists of three colors that are next to each other on the color wheel.



73.9480, 6.3759, 7.4462



73.9463, 3.0432, 11.4237



73.9480, -2.1054, 13.3746

Triad

The Triadic color harmony groups three colors that are evenly spaced from another and form a triangle on the color wheel.



73.9480, 3.0409, 11.4248



73.9480, -14.2070, 5.7498



73.9480, -0.2276, -6.1924

Complementary

The Complementary color scheme is a pair of colors which are on the opposite of each other on the color wheel.



73.9463, 3.0432, 11.4237



76.2908, -9.9336, -3.6529

Split Complementary

Split-complementary colors differ from the complementary color scheme. The scheme consists of three colors, the original color and two neighbors of the complement color.



73.9480, -5.7760, -6.7309



73.9463, 3.0432, 11.4237



73.9480, -13.7380, 0.4325

Square

The Square scheme is like the rectangle color scheme, but the four colors are evenly spaced on the color wheel.



73.9480, 3.0409, 11.4248



73.9480, -11.9907, 10.2621



73.9480, -10.6898, -4.2282



73.9480, 4.4504, -2.8072

Rectangle

The Rectangle color scheme consists of four colors that form a rectangle on the color wheel.



73.9463, 3.0432, 11.4237



73.9480, -5.8241, 13.3675



73.9480, -10.6898, -4.2282



73.9480, -2.0564, -6.7215

Sweetspot

The Sweet Spot groups the original color and five complimentary colors.



73.9480, 3.0409, 11.4248



96.7589, -2.7931, 7.9783



71.6049, 13.0981, -3.7440



44.5564, -1.1236, 3.8542

0.0000, NaN, NaN



46.2646, -2.4686, 2.5136

Same Dimension

The Same Dimension uses a secret algorithm to generate beautiful new colors.



73.9480, 3.0409, 11.4248



86.7860, 5.9734, 15.6408



79.3460, -6.1086, 16.9172



36.0788, -0.1993, 3.8872



33.1548, 38.5522, 21.1047



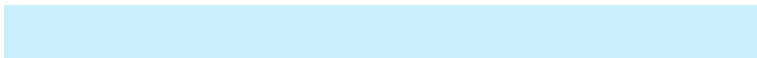
8.9794, 7.2173, 5.6594

Inverse Universe

The Inverse Universe completely reimagines the original color for something new.



76.2908, -9.9336, -3.6529



90.2641, -13.3126, -6.7558



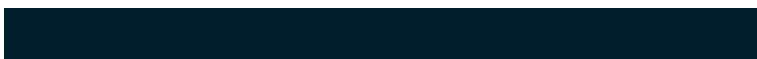
70.7743, -0.8783, -10.8290



36.6812, -3.5302, 0.0130



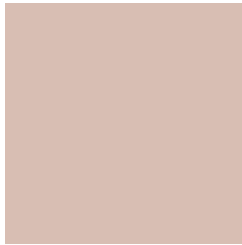
40.4680, -8.8132, -31.5562



10.6248, -3.1635, -6.4510

Previews

White Background



This preview shows how the HunterLab color 73.9463, 3.0432, 11.4237 looks on a white background.

Color Contrast Check

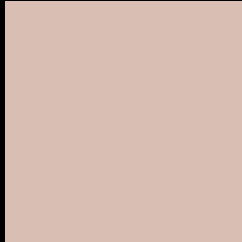
Large Text (above 18pt) WCAG AA × Fail

Any Text WCAG AA × Fail

Large Text (above 18pt) WCAG AAA × Fail

Any Text WCAG AAA × Fail

Black Background



This preview shows how the HunterLab color 73.9463, 3.0432, 11.4237 looks on a black background.

Color Contrast Check

Large Text (above 18pt) WCAG AA ✓ Pass

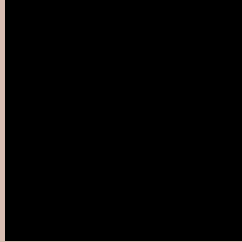
Any Text WCAG AA ✓ Pass

Large Text (above 18pt) WCAG AAA ✓ Pass

Any Text WCAG AAA ✓ Pass

If you want to check with other color combinations, try the [Color Contrast Checker](#).

HunterLab 73.9463, 3.0432, 11.4237 Background



This preview shows how black text looks on a background with the HunterLab color 73.9463, 3.0432, 11.4237.



This preview shows how white text looks on a background with the HunterLab color 73.9463, 3.0432,

Color Blindness Simulation

Color vision deficiency is a very complex topic, and I could not describe the different causes any better than Wikipedia does, so if you want to learn more, you should check out their [article about color blindness](#).

Dichromacy



Original Color

73.9463, 3.0432, 11.4237

Protanopia

74.1100, -3.9340, 10.6234

Deuteranopia

73.7813, 5.4815, 11.2882



Tritanopia

74.0390, 9.1215, 1.5316

Trichromacy



Original Color

73.9463, 3.0432, 11.4237

Protanomaly

73.9599, -1.4185, 10.9336

Deuteranomaly

73.9662, 4.6106, 11.4726

Tritanomaly

73.9744, 6.9329, 5.2670

Monochromacy



Original Color

73.9463, 3.0432, 11.4237

Achromatopsia

74.7222, -3.9870, 4.0598

Achromatomaly

74.2554, -1.3693, 6.8347

CSS Examples

Text

The CSS property to change the color of the text to HunterLab 73.9463, 3.0432, 11.4237 is called "color". The color property can be set on classes, ids or directly on the HTML element.

This example shows how text in the color `rgb(216, 190, 179)` looks like.

```
.text, #text, p{  
    color:rgb(216, 190, 179)  
}
```

If you want to add a text shadow in that color use the text-shadow property, you can generate a text shadow directly with our [CSS Text Shadow Generator](#).

Here you see how black text with a 4 pixel rgb(216, 190, 179) colored shadow looks like.

```
.shadow{ text-shadow: 4px 4px 2px rgb(216, 190, 179) }
```

Border

The CSS property to change the border of an element to HunterLab 73.9463, 3.0432, 11.4237 is called "border". The border property can be set on classes, ids or directly on the HTML element.

This example shows the color as border, it can be applied via the CSS property "border" or "border-color".

```
.border, #border, table{ border:4px solid rgb(216, 190, 179) }
```


If only the border color should be changed use the property `border-color`.

```
.border{ border-color:rgb(216, 190, 179) }
```

If you want to add a box shadow in that color use:

Here you see how a box with a 4 pixel `rgb(216, 190, 179)` colored shadow looks like.

```
.boxshadow{ -moz-box-shadow:4px 4px 4px  
4px rgb(216, 190, 179); -webkit-box-  
shadow:4px 4px 4px 4px rgb(216, 190, 179);  
box-shadow:4px 4px 4px 4px rgb(216, 190,  
179) }
```

Background

The CSS property to change the background color of an element to HunterLab 73.9463, 3.0432, 11.4237 is called "background". The background property can be set on classes, ids or directly on the HTML element.

```
.background, #background, body{  
background: rgb(216, 190, 179) }
```

If only the background color should be changed can be used:

```
.background{ background-color: rgb(216,  
190, 179) }
```

This example shows the color as background, it is applied via the CSS property "background".

To optimize and compress your CSS code, you can use our [online CSS compressor and optimizer](#) based on csstidy. If you want to create a linear or radial gradient as background or border, check our [CSS Gradient Generator](#).

Hey! You found this booklet interesting? Support Converting Colors with the new Membership Option!

The pro membership hides all ads, plus gives you double the colors in the color bucket, and more awesome pro features!

[Learn more, Memberships starting at \\$2.50/m!](#)

**Follow me
on Twitter!**

@ConvertingColor