

Converting Colors

HunterLab(73.9243, 5.2152,
5.6462)

Have a look what the booklet for
HunterLab(73.9243, 5.2152, 5.6462)
contains.

HunterLab(73.9243, 5.2152, 5.6462)	3
<i>Conversions</i>	4
<i>Details</i>	6
<i>Harmonies</i>	12
<i>Previews</i>	24
<i>Color Blindness Simulation</i>	28
<i>CSS Examples</i>	31

Color

**HunterLab(73.9243, 5.2152,
5.6462)**

Conversions

Conversions Part 1

Format	Color
Hex	D7BDC0
RGB	215, 189, 192
RGB Percent	84%, 74%, 75%
CMY	0.1569, 0.2588, 0.2471
CMYK	0.00, 0.12, 0.11, 0.16
HSL	353°, 25%, 79%
HSV	353°, 12%, 84%
XYZ	55.7363, 54.6480, 57.4797
YIQ	197.1160, 14.5330, 6.4450

Conversions

Conversions Part 2

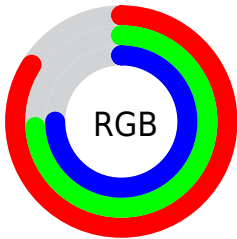
Format	Color
R _Y B	215, 189, 192
Decimal	14138816
CIE Lab	78.84, 9.72, 1.88
CIE LCh	79, 9.900, 10.921
Yxy	54.6504, 0.3320, 0.3256
Android (android.graphics.Color)	4292328896 (0xFFD7BDC0)
YUV	197.1160, -2.5222, 15.6843
Hunter-Lab	73.9243, 5.2152, 5.6462

Details

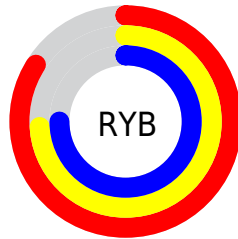
The HunterLab color $73.9243, 5.2152, 5.6462$ is a light color, and the websafe version is hex `CCCCCC`. A complement of this color would be $80.1090, -12.7982, 3.0365$, and the grayscale version is $74.7789, -3.9900, 4.0629$.

A 20% lighter version of the original color is $96.6137, -1.2493, 5.0119$, and $51.9095, 5.3091, 4.1804$ is the 20% darker color. If you saturate the color by 10%, you get $67.2952, 13.4704, 6.8798$, and if you desaturate by 10%, it is $80.9287, -2.7647, 4.6583$.

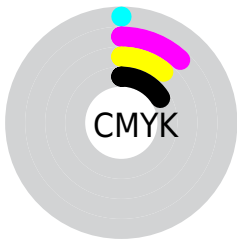
Distribution



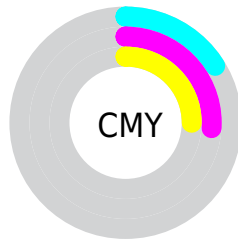
- Red (84%)
- Green (74%)
- Blue (75%)



- Red (84%)
- Yellow (74%)
- Blue (75%)



- Cyan (0%)
- Magenta (12%)
- Yellow (11%)
- Black (16%)





- Cyan (16%)
- Magenta (26%)
- Yellow (25%)

Brightness & Saturation Gradients


These gradients show how the HunterLab color 73.9243, 5.2152, 5.6462 changes by changing the brightness by 10 percent. The first figure shows a shift by +10% for each color and the second figure -10%.


Similar to the brightness gradients but the following saturation gradients show a change of the HunterLab color 73.9243, 5.2152, 5.6462 by changing the saturation by 10% instead.


 73.9243, 5.2152,
5.6462

 73.9243, 5.2152,
5.6462

201.1431, 1.9004,
13.2279

 62.5475, 5.3484,
4.9380


 98.5031, 4.7788,
7.1518

 51.8214, 5.4220,
4.2585


111.6454, 4.4885,
7.9449

 41.7900, 5.4261,
3.6099


125.3253, 4.1540,
8.7642

 32.5052, 5.3510,
2.9935

139.5223, 3.7778,
9.6088

 24.0328, 5.1830,
2.4102

154.2182, 3.3625,
10.4781

 16.4597, 4.9022,
1.8605

169.3967, 2.9100,

 9.9089, 4.4779,

11.3715

1.3454

185.0429, 2.4221,
12.2883

0.0000, INF, NaN

0.0000, NaN, NaN

■ 73.9243, 5.2152,
5.6462

■ 73.9243, 5.2152,
5.6462

■ 67.2952, 13.4704,
6.8798

■ 80.9287, -2.7647,
4.6583

■ 61.1050, 21.9889,
8.3919

■ 88.2492, -10.4777,
3.8763

■ 55.4408, 30.6837,
10.2120

■ 95.8442, -17.9551,
3.2690

■ 50.4059, 39.3547,
12.3448

■ 96.5335, -17.6135,
1.0679

■ 46.1177, 47.6303,

14.7461

■ 42.6938, 54.9415,
17.2941

■ 40.2245, 60.6022,
19.7789

■ 38.7302, 64.0579,
21.9375

■ 38.1004, 65.4299,
23.2108

Harmonies

Analogous

The Analogous color harmony consists of three colors that are next to each other on the color wheel.



73.9259, 4.8617, 1.1342



73.9243, 5.2152, 5.6462



73.9259, 3.0635, 9.4796

Triad

The Triadic color harmony groups three colors that are evenly spaced from another and form a triangle on the color wheel.



73.9259, 5.2130, 5.6474



73.9259, -9.8229, 10.2787



73.9259, -6.9034, -4.6456

Complementary

The Complementary color scheme is a pair of colors which are on the opposite of each other on the color wheel.



73.9243, 5.2152, 5.6462



80.1090, -12.7982, 3.0365

Split Complementary

Split-complementary colors differ from the complementary color scheme. The scheme consists of three colors, the original color and two neighbors of the complement color.



73.9259, -10.7085, -1.8819



73.9243, 5.2152, 5.6462



73.9259, -12.3644, 6.8016

Square

The Square scheme is like the rectangle color scheme, but the four colors are evenly spaced on the color wheel.



73.9259, 5.2130, 5.6474



73.9259, -5.6669, 12.0392



73.9259, -12.6845, 2.3629



73.9259, -2.2142, -5.0031

Rectangle

The Rectangle color scheme consists of four colors that form a rectangle on the color wheel.



73.9243, 5.2152, 5.6462



73.9259, 0.5325, 11.2057



73.9259, -12.6845, 2.3629



73.9259, -8.3252, -3.9594

Sweetspot

The Sweet Spot groups the original color and five complimentary colors.



73.9259, 5.2130, 5.6474



96.4864, -1.4949, 5.8636



74.3613, 8.1492, -5.2966



44.3366, -0.3547, 2.7524

0.0000, NaN, NaN



46.2646, -2.4686, 2.5136

Same Dimension

The Same Dimension uses a secret algorithm to generate beautiful new colors.



73.9259, 5.2130, 5.6474



87.1699, 9.3475, 7.2740



76.7819, -0.3991, 10.1272



35.2758, 1.4220, 2.4961



29.4797, 50.6524, 17.7497



7.2948, 12.6426, 3.5502

Inverse Universe

The Inverse Universe completely reimagines the original color for something new.



73.9259, 5.2130, 5.6474



87.1699, 9.3475, 7.2740



77.0750, -7.2894, -2.0899



35.2758, 1.4220, 2.4961



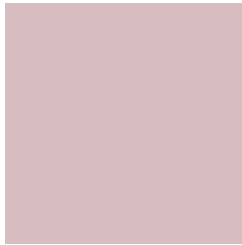
29.4797, 50.6524, 17.7497



7.2948, 12.6426, 3.5502

Previews

White Background



This preview shows how the HunterLab color 73.9243, 5.2152, 5.6462 looks on a white background.

Color Contrast Check

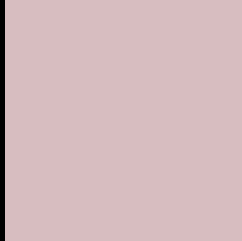
Large Text (above 18pt) WCAG AA × Fail

Any Text WCAG AA × Fail

Large Text (above 18pt) WCAG AAA × Fail

Any Text WCAG AAA × Fail

Black Background



This preview shows how the HunterLab color 73.9243, 5.2152, 5.6462 looks on a black background.

Color Contrast Check

Large Text (above 18pt) WCAG AA ✓ Pass

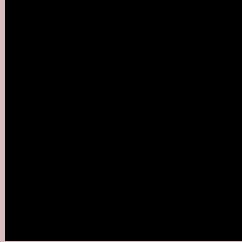
Any Text WCAG AA ✓ Pass

Large Text (above 18pt) WCAG AAA ✓ Pass

Any Text WCAG AAA ✓ Pass

If you want to check with other color combinations, try the [Color Contrast Checker](#).

HunterLab 73.9243, 5.2152, 5.6462 Background



This preview shows how black text looks on a background with the HunterLab color 73.9243, 5.2152, 5.6462.



This preview shows how white text looks on a background with the HunterLab color 73.9243, 5.2152,

Color Blindness Simulation

Color vision deficiency is a very complex topic, and I could not describe the different causes any better than Wikipedia does, so if you want to learn more, you should check out their [article about color blindness](#).

Dichromacy



Original Color

73.9243, 5.2152, 5.6462

Protanopia

73.9363, -2.1695, 4.1190

Deuteranopia

73.9243, 5.2152, 5.6462



Tritanopia

73.7590, 8.2591, 0.6786

Trichromacy



Original Color

73.9243, 5.2152, 5.6462

Protanomaly

73.8738, 0.6299, 4.5687

Deuteranomaly

73.9243, 5.2152, 5.6462

Tritanomaly

73.9206, 7.0607, 2.8213

Monochromacy



Original Color

73.9243, 5.2152, 5.6462

Achromatopsia

74.7222, -3.9870, 4.0598

Achromatomaly

74.4050, -0.5556, 4.6969

CSS Examples

Text

The CSS property to change the color of the text to HunterLab 73.9243, 5.2152, 5.6462 is called "color". The color property can be set on classes, ids or directly on the HTML element.

This example shows how text in the color `rgb(215, 189, 192)` looks like.

```
.text, #text, p{  
    color:rgb(215, 189, 192)  
}
```

If you want to add a text shadow in that color use the text-shadow property, you can generate a text shadow directly with our [CSS Text Shadow Generator](#).

Here you see how black text with a 4 pixel rgb(215, 189, 192) colored shadow looks like.

```
.shadow{ text-shadow: 4px 4px 2px rgb(215, 189, 192) }
```

Border

The CSS property to change the border of an element to HunterLab 73.9243, 5.2152, 5.6462 is called "border". The border property can be set on classes, ids or directly on the HTML element.

This example shows the color as border, it can be applied via the CSS property "border" or "border-color".

```
.border, #border, table{ border:4px solid rgb(215, 189, 192) }
```


If only the border color should be changed use the property `border-color`.

```
.border{ border-color:rgb(215, 189, 192) }
```

If you want to add a box shadow in that color use:

Here you see how a box with a 4 pixel `rgb(215, 189, 192)` colored shadow looks like.

```
.boxshadow{ -moz-box-shadow:4px 4px 4px  
4px rgb(215, 189, 192); -webkit-box-  
shadow:4px 4px 4px 4px rgb(215, 189, 192);  
box-shadow:4px 4px 4px 4px rgb(215, 189,  
192) }
```

Background

The CSS property to change the background color of an element to HunterLab 73.9243, 5.2152, 5.6462 is called "background". The background property can be set on classes, ids or directly on the HTML element.

```
.background, #background, body{  
background: rgb(215, 189, 192) }
```

If only the background color should be changed can be used:

```
.background{ background-color: rgb(215,  
189, 192) }
```

This example shows the color as background, it is applied via the CSS property "background".

To optimize and compress your CSS code, you can use our [online CSS compressor and optimizer](#) based on csstidy. If you want to create a linear or radial gradient as background or border, check our [CSS Gradient Generator](#).

Hey! You found this booklet interesting? Support Converting Colors with the new Membership Option!

The pro membership hides all ads, plus gives you double the colors in the color bucket, and more awesome pro features!

[Learn more, Memberships starting at \\$2.50/m!](#)

**Follow me
on Twitter!**

@ConvertingColor