

Converting Colors

HunterLab(73.9255, 5.7435,
6.5194)

Have a look what the booklet for
HunterLab(73.9255, 5.7435, 6.5194)
contains.

HunterLab(74.0706, 5.5868, 6.7456)	3
<i>Conversions</i>	4
<i>Details</i>	6
<i>Harmonies</i>	12
<i>Previews</i>	24
<i>Color Blindness Simulation</i>	28
<i>CSS Examples</i>	31

Color

**HunterLab(74.0706, 5.5868,
6.7456)**

Conversions

Conversions Part 1

Format	Color
Hex	D9BDBE
RGB	217, 189, 190
RGB Percent	85%, 74%, 75%
CMY	0.1490, 0.2588, 0.2549
CMYK	0.00, 0.13, 0.12, 0.15
HSL	358°, 27%, 80%
HSV	358°, 13%, 85%
XYZ	56.1071, 54.8645, 56.3479
YIQ	197.4860, 16.3670, 6.2470

Conversions

Conversions Part 2

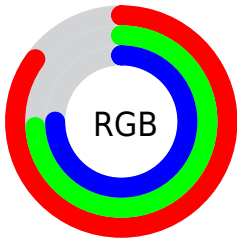
Format	Color
R _Y B	217, 189, 190
Decimal	14269886
CIE Lab	78.96, 10.11, 3.16
CIE LCh	79, 10.589, 17.358
Yxy	54.8670, 0.3353, 0.3279
Android (android.graphics.Color)	4292459966 (0xFFD9BDBE)
YUV	197.4860, -3.6906, 17.1138
Hunter-Lab	74.0706, 5.5868, 6.7456

Details

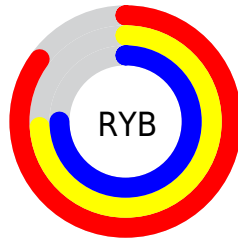
The HunterLab color $74.0706, 5.5868, 6.7456$ is a light color, and the websafe version is hex $CCCCCC$. A complement of this color would be $80.8725, -13.0784, 1.9738$, and the grayscale version is $74.9404, -3.9986, 4.0717$.

A 20% lighter version of the original color is $96.5498, -1.5971, 5.9241$, and $52.0537, 5.6761, 5.2176$ is the 20% darker color. If you saturate the color by 10%, you get $67.3561, 13.7264, 8.6720$, and if you desaturate by 10%, it is $81.1749, -2.2341, 5.0014$.

Distribution



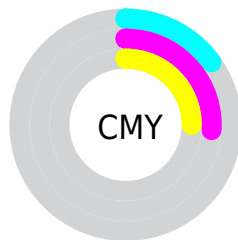
- Red (85%)
- Green (74%)
- Blue (75%)



- Red (85%)
- Yellow (74%)
- Blue (75%)



- Cyan (0%)
- Magenta (13%)
- Yellow (12%)
- Black (15%)





- Cyan (15%)
- Magenta (26%)
- Yellow (25%)

Brightness & Saturation Gradients


These gradients show how the HunterLab color 74.0706, 5.5868, 6.7456 changes by changing the brightness by 10 percent. The first figure shows a shift by +10% for each color and the second figure -10%.


Similar to the brightness gradients but the following saturation gradients show a change of the HunterLab color 74.0706, 5.5868, 6.7456 by changing the saturation by 10% instead.


 74.0706, 5.5868,
6.7456

 74.0706, 5.5868,
6.7456


201.3473, 2.4031,
14.7847

 62.6859, 5.7025,
5.9743


 98.6641, 5.1832,
8.3678

 51.9514, 5.7576,
5.2275


111.8133, 4.9083,
9.2152

 41.9110, 5.7423,
4.5067


125.4997, 4.5887,
10.0865

 32.6165, 5.6466,
3.8118

139.7031, 4.2270,
10.9812

 24.1334, 5.4565,
3.1417

154.4051, 3.8256,
11.8989

 16.5484, 5.1520,
2.4938

169.5896, 3.3867,

 9.9839, 4.7021,

12.8390

1.8832

185.2415, 2.9120,
13.8011

0.0000, INF, NaN

0.0000, NaN, NaN

■ 74.0706, 5.5868,
6.7456

■ 74.0706, 5.5868,
6.7456

■ 67.3561, 13.7264,
8.6720

■ 81.1749, -2.2341,
5.0014

■ 61.0989, 22.1789,
10.7910

■ 88.6067, -9.7515,
3.4150

■ 55.3907, 30.8609,
13.1000

■ 96.3226, -17.0028,
1.9655

■ 50.3404, 39.5683,
15.5592

■ 96.6912, -17.0452,
1.2698

■ 46.0706, 47.9141,

18.0697

■ 42.7023, 55.3026,
20.4563

■ 40.3232, 61.0220,
22.4828

■ 38.9425, 64.5139,
23.9250

■ 38.4301, 65.8568,
24.4913

Harmonies

Analogous

The Analogous color harmony consists of three colors that are next to each other on the color wheel.



74.0722, 5.8028, 1.9724



74.0706, 5.5868, 6.7456



74.0722, 2.7673, 10.5373

Triad

The Triadic color harmony groups three colors that are evenly spaced from another and form a triangle on the color wheel.



74.0722, 5.5846, 6.7468



74.0722, -10.9951, 10.0457



74.0722, -6.0789, -5.6044

Complementary

The Complementary color scheme is a pair of colors which are on the opposite of each other on the color wheel.



74.0706, 5.5868, 6.7456



80.8725, -13.0784, 1.9738

Split Complementary

Split-complementary colors differ from the complementary color scheme. The scheme consists of three colors, the original color and two neighbors of the complement color.



74.0722, -10.4482, -3.1227



74.0706, 5.5868, 6.7456



74.0722, -13.2349, 6.0340

Square

The Square scheme is like the rectangle color scheme, but the four colors are evenly spaced on the color wheel.



74.0722, 5.5846, 6.7468



74.0722, -6.8436, 12.3521



74.0722, -13.0374, 1.2103



74.0722, -1.0240, -5.3814

Rectangle

The Rectangle color scheme consists of four colors that form a rectangle on the color wheel.



74.0706, 5.5868, 6.7456



74.0722, -0.1639, 12.0939



74.0722, -13.0374, 1.2103



74.0722, -7.6738, -5.0522

Sweetspot

The Sweet Spot groups the original color and five complimentary colors.



74.0722, 5.5846, 6.7468



96.4606, -1.6353, 6.2320



74.7967, 9.7270, -5.7769



44.3224, -0.4315, 2.9543

0.0000, NaN, NaN



46.2646, -2.4686, 2.5136

Same Dimension

The Same Dimension uses a secret algorithm to generate beautiful new colors.



74.0722, 5.5846, 6.7468



87.0774, 8.8555, 8.5967



77.7697, -1.0706, 11.1963



36.1372, 1.3425, 2.8928



29.9056, 51.2594, 18.9738



7.6296, 13.1128, 4.5664

Inverse Universe

The Inverse Universe completely reimagines the original color for something new.



74.0722, 5.5846, 6.7468



87.0774, 8.8555, 8.5967



76.9459, -6.6000, -3.2850



36.1372, 1.3425, 2.8928



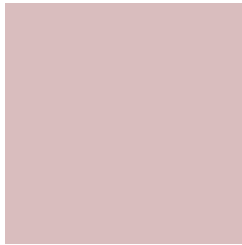
29.9056, 51.2594, 18.9738



7.6296, 13.1128, 4.5664

Previews

White Background



This preview shows how the HunterLab color 74.0706, 5.5868, 6.7456 looks on a white background.

Color Contrast Check

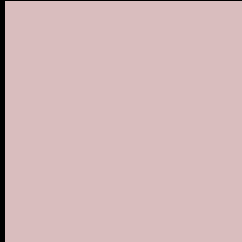
Large Text (above 18pt) WCAG AA × Fail

Any Text WCAG AA × Fail

Large Text (above 18pt) WCAG AAA × Fail

Any Text WCAG AAA × Fail

Black Background



This preview shows how the HunterLab color 74.0706, 5.5868, 6.7456 looks on a black background.

Color Contrast Check

Large Text (above 18pt) WCAG AA ✓ Pass

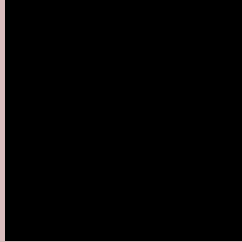
Any Text WCAG AA ✓ Pass

Large Text (above 18pt) WCAG AAA ✓ Pass

Any Text WCAG AAA ✓ Pass

If you want to check with other color combinations, try the [Color Contrast Checker](#).

HunterLab 74.0706, 5.5868, 6.7456 Background



This preview shows how black text looks on a background with the HunterLab color 74.0706, 5.5868, 6.7456.



This preview shows how white text looks on a background with the HunterLab color 74.0706, 5.5868,

6.7456.

Color Blindness Simulation

Color vision deficiency is a very complex topic, and I could not describe the different causes any better than Wikipedia does, so if you want to learn more, you should check out their [article about color blindness](#).

Dichromacy



Original Color

74.0706, 5.5868, 6.7456

Protanopia

74.2697, -2.6872, 5.4413

Deuteranopia

74.0706, 5.5868, 6.7456



Tritanopia

74.0709, 9.2905, 1.0780

Trichromacy



Original Color

74.0706, 5.5868, 6.7456

Protanomaly

74.2075, 0.1208, 5.8842

Deuteranomaly

74.0706, 5.5868, 6.7456

Tritanomaly

74.1276, 7.7491, 3.0806

Monochromacy



Original Color

74.0706, 5.5868, 6.7456

Achromatopsia

74.7222, -3.9870, 4.0598

Achromatomaly

74.3747, -0.7203, 5.1295

CSS Examples

Text

The CSS property to change the color of the text to HunterLab 74.0706, 5.5868, 6.7456 is called "color". The color property can be set on classes, ids or directly on the HTML element.

This example shows how text in the color `rgb(217, 189, 190)` looks like.

```
.text, #text, p{  
    color:rgb(217, 189, 190)  
}
```

If you want to add a text shadow in that color use the text-shadow property, you can generate a text shadow directly with our [CSS Text Shadow Generator](#).

Here you see how black text with a 4 pixel rgb(217, 189, 190) colored shadow looks like.

```
.shadow{ text-shadow: 4px 4px 2px rgb(217, 189, 190) }
```

Border

The CSS property to change the border of an element to HunterLab 74.0706, 5.5868, 6.7456 is called "border". The border property can be set on classes, ids or directly on the HTML element.

This example shows the color as border, it can be applied via the CSS property "border" or "border-color".

```
.border, #border, table{ border:4px solid rgb(217, 189, 190) }
```


If only the border color should be changed use the property `border-color`.

```
.border{ border-color:rgb(217, 189, 190) }
```

If you want to add a box shadow in that color use:

Here you see how a box with a 4 pixel `rgb(217, 189, 190)` colored shadow looks like.

```
.boxshadow{ -moz-box-shadow:4px 4px 4px  
4px rgb(217, 189, 190); -webkit-box-  
shadow:4px 4px 4px 4px rgb(217, 189, 190);  
box-shadow:4px 4px 4px 4px rgb(217, 189,  
190) }
```

Background

The CSS property to change the background color of an element to HunterLab 74.0706, 5.5868, 6.7456 is called "background". The background property can be set on classes, ids or directly on the HTML element.

```
.background, #background, body{  
background: rgb(217, 189, 190) }
```

If only the background color should be changed can be used:

```
.background{ background-color: rgb(217,  
189, 190) }
```

This example shows the color as background, it is applied via the CSS property "background".

To optimize and compress your CSS code, you can use our [online CSS compressor and optimizer](#) based on csstidy. If you want to create a linear or radial gradient as background or border, check our [CSS Gradient Generator](#).

Hey! You found this booklet interesting? Support Converting Colors with the new Membership Option!

The pro membership hides all ads, plus gives you double the colors in the color bucket, and more awesome pro features!

[Learn more, Memberships starting at \\$2.50/m!](#)

**Follow me
on Twitter!**

@ConvertingColor