

# Converting Colors

HunterLab(73.9281, 6.5664,  
15.5244)

Have a look what the booklet for  
HunterLab(73.9281, 6.5664,  
15.5244) contains.

<b>HunterLab(73.8742, 6.7460, 15.5133)</b> .....	3
<b><i>Conversions</i></b> .....	4
<b><i>Details</i></b> .....	6
<b><i>Harmonies</i></b> .....	12
<b><i>Previews</i></b> .....	24
<b><i>Color Blindness Simulation</i></b> .....	28
<b><i>CSS Examples</i></b> .....	31

# Color

**HunterLab(73.8742, 6.7460,  
15.5133)**

# Conversions

## Conversions Part 1

Format	Color
Hex	E2BBA9
RGB	226, 187, 169
RGB Percent	89%, 73%, 66%
CMY	0.1137, 0.2666, 0.3372
CMYK	0.00, 0.17, 0.25, 0.11
HSL	19°, 50%, 77%
HSV	19°, 25%, 89%
XYZ	56.2958, 54.5740, 45.1028
YIQ	196.6090, 29.0220, 2.6700

# Conversions

## Conversions Part 2

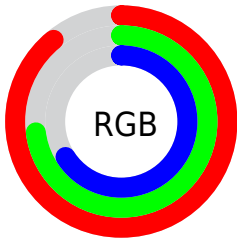
<b>Format</b>	<b>Color</b>
<b>R<sub>YB</sub></b>	226, 195, 169
Decimal	14859177
CIE <sub>Lab</sub>	78.80, 11.30, 14.35
CIE <sub>LCh</sub>	79, 18.267, 51.785
Yxy	54.5765, 0.3609, 0.3499
Android (android.graphics.Color)	4293049257 (0xFFE2BBA9)
YUV	196.6090, -13.6112, 25.7759
Hunter-Lab	73.8742, 6.7460, 15.5133

# Details

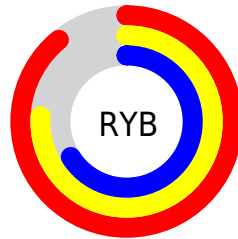
The HunterLab color  $73.8742, 6.7460, 15.5133$  is a light color, and the websafe version is hex `FFCCCC`. A complement of this color would be  $76.8350, -12.1584, -8.3894$ , and the grayscale version is  $74.6047, -3.9807, 4.0534$ .

A 20% lighter version of the original color is  $95.2591, -4.1573, 14.7326$ , and  $51.8465, 6.7481, 12.8199$  is the 20% darker color. If you saturate the color by 10%, you get  $68.9844, 11.8879, 19.2025$ , and if you desaturate by 10%, it is  $79.0048, 1.9682, 11.4655$ .

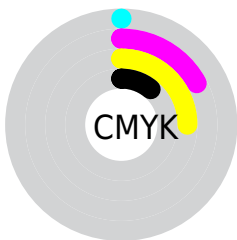
# Distribution



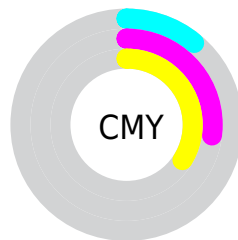
- Red (89%)
- Green (73%)
- Blue (66%)



- Red (89%)
- Yellow (76%)
- Blue (66%)



- Cyan (0%)
- Magenta (17%)
- Yellow (25%)
- Black (11%)



- Cyan (11%)
- Magenta (27%)
- Yellow (34%)

# Brightness & Saturation Gradients

These gradients show how the HunterLab color 73.8742, 6.7460, 15.5133 changes by changing the brightness by 10 percent. The first figure shows a shift by +10% for each color and the second figure -10%.

Similar to the brightness gradients but the following saturation gradients show a change of the HunterLab color 73.8742, 6.7460, 15.5133 by changing the saturation by 10% instead.



 73.8742, 6.7460,  
15.5133

 73.8742, 6.7460,  
15.5133

201.0732, 3.9866,  
27.7088

 62.5002, 6.8042,  
14.1567


 98.4480, 6.4486,  
18.2066

 51.7770, 6.7992,  
12.7827


111.5880, 6.2239,  
19.5496

 41.7486, 6.7202,  
11.3827


125.2656, 5.9525,  
20.8946

 32.4672, 6.5564,  
9.9420

139.4604, 5.6374,  
22.2436

 23.9984, 6.2933,  
8.4377

154.1543, 5.2812,  
23.5984

 16.4293, 5.9094,  
6.8306

169.3307, 4.8861,

 9.8833, 5.3728,

24.9602

6.5769

184.9749, 4.4540,  
26.3300

0.0000, INF, NaN

0.0000, NaN, NaN

■ 73.8742, 6.7460,  
15.5133

■ 73.8742, 6.7460,  
15.5133

■ 68.9844, 11.8879,  
19.2025

■ 79.0048, 1.9682,  
11.4655

■ 64.3613, 17.4185,  
22.4584

■ 84.3444, -2.4646,  
7.1140

■ 60.0422, 23.3326,  
25.1974

■ 89.8724, -6.5862,  
2.5071

■ 56.0672, 29.5953,  
27.3244

■ 95.4192, -11.2599,  
-0.1860

■ 52.4798, 36.1226,

■ 97.4212, -14.4266,

28.7431

2.2001

■ 49.3240, 42.7636,  
29.3767

■ 46.6392, 49.2857,  
29.2069

■ 45.5243, 52.2425,  
28.9664

# Harmonies

## Analogous

The Analogous color harmony consists of three colors that are next to each other on the color wheel.



73.8759, 12.3208, 9.7133



73.8742, 6.7460, 15.5133



73.8759, -1.5285, 18.1621

# Triad

The Triadic color harmony groups three colors that are evenly spaced from another and form a triangle on the color wheel.



73.8759, 6.7434, 15.5144



73.8759, -19.8582, 6.2698



73.8759, 2.3971, -12.4222

# Complementary

The Complementary color scheme is a pair of colors which are on the opposite of each other on the color wheel.



73.8742, 6.7460, 15.5133



76.8350, -12.1584, -8.3894

# Split Complementary

Split-complementary colors differ from the complementary color scheme. The scheme consists of three colors, the original color and two neighbors of the complement color.



73.8759, -6.3324, -13.6211



73.8742, 6.7460, 15.5133



73.8759, -18.9164, -2.1631

# Square

The Square scheme is like the rectangle color scheme, but the four colors are evenly spaced on the color wheel.



73.8759, 6.7434, 15.5144



73.8759, -16.6950, 13.2453



73.8759, -14.0598, -9.6785



73.8759, 9.7313, -6.5707



# Rectangle

The Rectangle color scheme consists of four colors that form a rectangle on the color wheel.



73.8742, 6.7460, 15.5133



73.8759, -7.3479, 18.0250



73.8759, -14.0598, -9.6785



73.8759, -0.4809, -13.4079

# Sweetspot

The Sweet Spot groups the original color and five complimentary colors.



73.8759, 6.7434, 15.5144



94.9587, -1.4241, 9.6028



70.1027, 22.5816, -7.3709



43.5009, -0.3065, 4.7956

0.0000, NaN, NaN



46.2646, -2.4686, 2.5136



# Same Dimension

The Same Dimension uses a secret algorithm to generate beautiful new colors.



73.8759, 6.7434, 15.5144



81.8827, 10.6157, 19.9526



82.1165, -7.3568, 23.3686



37.9520, -0.2931, 4.1546



34.6580, 38.6824, 22.0333



9.9482, 7.9871, 6.2699

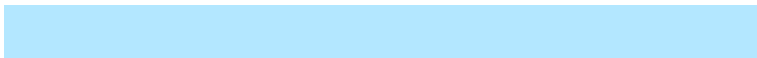


# Inverse Universe

The Inverse Universe completely reimagines the original color for something new.



76.8350, -12.1584, -8.3894



85.9095, -15.1721, -12.6217



68.3600, 1.7697, -20.2511



38.4758, -3.6243, -0.0668



40.8111, -7.5926, -34.6200



11.4585, -3.0607, -7.7151



# Previews

## White Background



This preview shows how the HunterLab color 73.8742, 6.7460, 15.5133 looks on a white background.

## Color Contrast Check

Large Text (above 18pt) WCAG AA × Fail

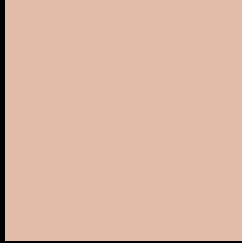
Any Text WCAG AA × Fail

Large Text (above 18pt) WCAG AAA × Fail

Any Text WCAG AAA × Fail



# Black Background



This preview shows how the HunterLab color 73.8742, 6.7460, 15.5133 looks on a black background.

## Color Contrast Check

Large Text (above 18pt) WCAG AA ✓ Pass

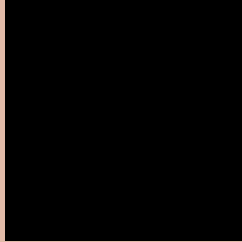
Any Text WCAG AA ✓ Pass

Large Text (above 18pt) WCAG AAA ✓ Pass

Any Text WCAG AAA ✓ Pass

If you want to check with other color combinations, try the [Color Contrast Checker](#).

## HunterLab 73.8742, 6.7460, 15.5133 Background



This preview shows how black text looks on a background with the HunterLab color 73.8742, 6.7460, 15.5133.



This preview shows how white text looks on a background with the HunterLab color 73.8742, 6.7460,

15.5133.

# Color Blindness Simulation

Color vision deficiency is a very complex topic, and I could not describe the different causes any better than Wikipedia does, so if you want to learn more, you should check out their [article about color blindness](#).

## Dichromacy



### Original Color

73.8742, 6.7460, 15.5133

### Protanopia

74.0842, -4.4545, 13.9322

### Deuteranopia

73.9448, 5.5013, 15.5637



## Tritanopia

73.8622, 14.1089, 3.3586

# Trichromacy



## Original Color

73.8742, 6.7460, 15.5133

## Protanomaly

73.9425, -0.3752, 14.2609

## Deuteranomaly

74.0531, 5.8638, 15.6808

## Tritanomaly

73.7311, 11.6404, 7.8311

# Monochromacy



## Original Color

73.8742, 6.7460, 15.5133

## Achromatopsia

74.7222, -3.9870, 4.0598

## Achromatomaly

74.2548, -0.0109, 8.2163

# CSS Examples

## Text

The CSS property to change the color of the text to HunterLab 73.8742, 6.7460, 15.5133 is called "color". The color property can be set on classes, ids or directly on the HTML element.

This example shows how text in the color `rgb(226, 187, 169)` looks like.

```
.text, #text, p{  
    color:rgb(226, 187, 169)  
}
```

If you want to add a text shadow in that color use the text-shadow property, you can generate a text shadow directly with our [CSS Text Shadow Generator](#).

Here you see how black text with a 4 pixel rgb(226, 187, 169) colored shadow looks like.

```
.shadow{ text-shadow: 4px 4px 2px rgb(226, 187, 169) }
```

## Border

The CSS property to change the border of an element to HunterLab 73.8742, 6.7460, 15.5133 is called "border". The border property can be set on classes, ids or directly on the HTML element.

This example shows the color as border, it can be applied via the CSS property "border" or "border-color".

```
.border, #border, table{ border:4px solid rgb(226, 187, 169) }
```



If only the border color should be changed use the property `border-color`.

```
.border{ border-color:rgb(226, 187, 169) }
```

If you want to add a box shadow in that color use:

Here you see how a box with a 4 pixel `rgb(226, 187, 169)` colored shadow looks like.

```
.boxshadow{ -moz-box-shadow:4px 4px 4px  
4px rgb(226, 187, 169); -webkit-box-  
shadow:4px 4px 4px 4px rgb(226, 187, 169);  
box-shadow:4px 4px 4px 4px rgb(226, 187,  
169) }
```

# Background

The CSS property to change the background color of an element to HunterLab 73.8742, 6.7460, 15.5133 is called "background". The background property can be set on classes, ids or directly on the HTML element.

```
.background, #background, body{  
background: rgb(226, 187, 169) }
```

If only the background color should be changed can be used:

```
.background{ background-color: rgb(226,  
187, 169) }
```

This example shows the color as background, it is applied via the CSS property "background".

To optimize and compress your CSS code, you can use our [online CSS compressor and optimizer](#) based on csstidy. If you want to create a linear or radial gradient as background or border, check our [CSS Gradient Generator](#).

Hey! You found this booklet interesting? Support Converting Colors with the new Membership Option!

The pro membership hides all ads, plus gives you double the colors in the color bucket, and more awesome pro features!

**[Learn more, Memberships starting at \\$2.50/m!](#)**

**Follow me  
on Twitter!**

@ConvertingColor