

Converting Colors

HunterLab(73.9605, 1.6507,
10.9798)

Have a look what the booklet for
HunterLab(73.9605, 1.6507,
10.9798) contains.

HunterLab(73.9615, 1.6391, 10.9889)	3
<i>Conversions</i>	4
<i>Details</i>	6
<i>Harmonies</i>	12
<i>Previews</i>	24
<i>Color Blindness Simulation</i>	28
<i>CSS Examples</i>	31

Color

**HunterLab(73.9615, 1.6391,
10.9889)**

Conversions

Conversions Part 1

Format	Color
Hex	D5BFB4
RGB	213, 191, 180
RGB Percent	84%, 75%, 71%
CMY	0.1647, 0.2510, 0.2941
CMYK	0.00, 0.10, 0.15, 0.16
HSL	20°, 28%, 77%
HSV	20°, 15%, 84%
XYZ	54.3096, 54.7030, 50.8763
YIQ	196.3240, 16.6430, 1.2430

Conversions

Conversions Part 2

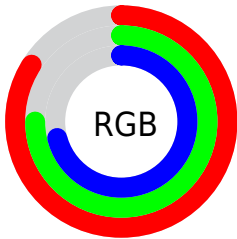
Format	Color
R _Y B	213, 197, 180
Decimal	14008244
CIE Lab	78.87, 5.98, 8.37
CIE LCh	79, 10.290, 54.461
Yxy	54.7055, 0.3397, 0.3421
Android (android.graphics.Color)	4292198324 (0xFFD5BFB4)
YUV	196.3240, -8.0477, 14.6249
Hunter-Lab	73.9615, 1.6391, 10.9889

Details

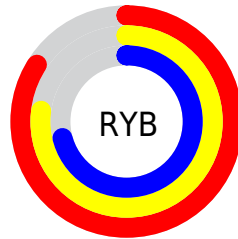
The HunterLab color $73.9615, 1.6391, 10.9889$ is a light color, and the websafe version is hex `CCCCCC`. A complement of this color would be $75.3307, -8.7239, -3.2809$, and the grayscale version is $74.4645, -3.9732, 4.0458$.

A 20% lighter version of the original color is $96.8698, -4.3425, 11.0437$, and $51.9407, 1.9603, 9.1203$ is the 20% darker color. If you saturate the color by 10%, you get $69.2874, 5.9019, 14.8460$, and if you desaturate by 10%, it is $78.8271, -2.3098, 6.8298$.

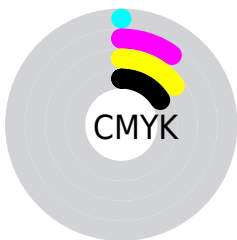
Distribution



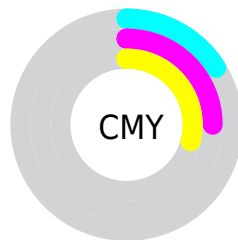
- Red (84%)
- Green (75%)
- Blue (71%)



- Red (84%)
- Yellow (77%)
- Blue (71%)



- Cyan (0%)
- Magenta (10%)
- Yellow (15%)
- Black (16%)



- Cyan (16%)
- Magenta (25%)
- Yellow (29%)

Brightness & Saturation Gradients

These gradients show how the HunterLab color 73.9615, 1.6391, 10.9889 changes by changing the brightness by 10 percent. The first figure shows a shift by +10% for each color and the second figure -10%.

Similar to the brightness gradients but the following saturation gradients show a change of the HunterLab color 73.9615, 1.6391, 10.9889 by changing the saturation by 10% instead.

73.9615, 1.6391,
10.9889

73.9615, 1.6391,
10.9889

201.1951, -3.0016,
20.9215

62.5827, 1.9511,
9.9530

98.5440, 0.8692,
13.0967

51.8545, 2.2133,
8.9235

111.6881, 0.4224,
14.1694

41.8208, 2.4177,
7.8975

125.3696, -0.0630,
15.2564

32.5335, 2.5568,
6.8687

139.5682, -0.5847,
16.3583

24.0584, 2.6202,
5.8265

154.2657, -1.1409,
17.4755

16.4822, 2.5927,
4.7525

169.4457, -1.7301,

9.9280, 2.4493,

18.6083

4.0596

185.0934, -2.3507,
19.7569

0.0000, INF, NaN

0.0000, NaN, NaN

■ 73.9615, 1.6391,
10.9889

■ 73.9615, 1.6391,
10.9889

■ 69.2874, 5.9019,
14.8460

■ 78.8271, -2.3098,
6.8298

■ 64.8230, 10.5103,
18.3425

■ 83.8597, -5.9668,
2.4103

■ 60.5963, 15.4788,
21.4132

■ 89.0441, -9.3628,
-2.2319

■ 56.6381, 20.8084,
23.9806

■ 94.0080, -14.5199,
-1.9952

■ 52.9823, 26.4735,

■ 96.3775, -18.1767,

25.9593

0.8679

■ 49.6660, 32.4080,
27.2646

■ 46.7267, 38.4899,
27.8304

■ 44.1982, 44.5272,
27.6444

■ 43.1927, 47.1345,
27.4403

Harmonies

Analogous

The Analogous color harmony consists of three colors that are next to each other on the color wheel.



73.9631, 4.8716, 7.6612



73.9615, 1.6391, 10.9889



73.9631, -3.0339, 12.4457

Triad

The Triadic color harmony groups three colors that are evenly spaced from another and form a triangle on the color wheel.



73.9631, 1.6369, 10.9900



73.9631, -13.1453, 4.8906



73.9631, 0.0132, -4.6555

Complementary

The Complementary color scheme is a pair of colors which are on the opposite of each other on the color wheel.



73.9615, 1.6391, 10.9889



75.3307, -8.7239, -3.2809

Split Complementary

Split-complementary colors differ from the complementary color scheme. The scheme consists of three colors, the original color and two neighbors of the complement color.



73.9631, -4.8626, -5.5170



73.9615, 1.6391, 10.9889



73.9631, -12.3774, 0.1964

Square

The Square scheme is like the rectangle color scheme, but the four colors are evenly spaced on the color wheel.



73.9631, 1.6369, 10.9900



73.9631, -11.5023, 9.0749



73.9631, -9.3767, -3.6888



73.9631, 3.9171, -1.4060

Rectangle

The Rectangle color scheme consists of four colors that form a rectangle on the color wheel.



73.9615, 1.6391, 10.9889



73.9631, -6.3013, 12.2314



73.9631, -9.3767, -3.6888



73.9631, -1.5698, -5.2425

Sweetspot

The Sweet Spot groups the original color and five complimentary colors.



73.9631, 1.6369, 10.9900



96.9035, -3.0367, 8.1401



71.4518, 10.9184, -2.1473



44.6326, -1.2521, 3.9391

0.0000, NaN, NaN



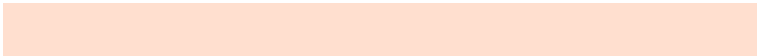
46.2646, -2.4686, 2.5136

Same Dimension

The Same Dimension uses a secret algorithm to generate beautiful new colors.



73.9631, 1.6369, 10.9900



88.5220, 3.8954, 15.2700



78.9369, -6.7274, 16.0894



36.1810, -0.3737, 3.9989



34.0066, 36.1439, 21.5875



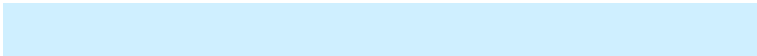
9.2068, 6.6539, 5.7897

Inverse Universe

The Inverse Universe completely reimagines the original color for something new.



75.3307, -8.7239, -3.2809



90.5883, -11.7752, -6.3068



70.2963, -0.4054, -9.7859



36.5755, -3.3588, -0.1143



38.6547, -6.0440, -35.2678



10.2497, -2.6243, -7.1462

Previews

White Background



This preview shows how the HunterLab color 73.9615, 1.6391, 10.9889 looks on a white background.

Color Contrast Check

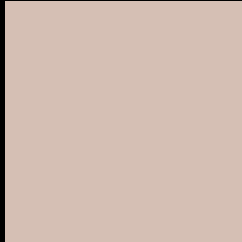
Large Text (above 18pt) WCAG AA × Fail

Any Text WCAG AA × Fail

Large Text (above 18pt) WCAG AAA × Fail

Any Text WCAG AAA × Fail

Black Background



This preview shows how the HunterLab color 73.9615, 1.6391, 10.9889 looks on a black background.

Color Contrast Check

Large Text (above 18pt) WCAG AA ✓ Pass

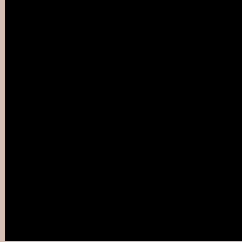
Any Text WCAG AA ✓ Pass

Large Text (above 18pt) WCAG AAA ✓ Pass

Any Text WCAG AAA ✓ Pass

If you want to check with other color combinations, try the [Color Contrast Checker](#).

HunterLab 73.9615, 1.6391, 10.9889 Background



This preview shows how black text looks on a background with the HunterLab color 73.9615, 1.6391, 10.9889.



This preview shows how white text looks on a background with the HunterLab color 73.9615, 1.6391,

Color Blindness Simulation

Color vision deficiency is a very complex topic, and I could not describe the different causes any better than Wikipedia does, so if you want to learn more, you should check out their [article about color blindness](#).

Dichromacy



Original Color

73.9615, 1.6391, 10.9889

Protanopia

74.1378, -3.7818, 10.2245

Deuteranopia

73.8088, 5.6287, 10.8930



Tritanopia

74.0470, 7.7339, 1.0216

Trichromacy



Original Color

73.9615, 1.6391, 10.9889

Protanomaly

74.1900, -2.1087, 10.7423

Deuteranomaly

73.7850, 4.0555, 10.8396

Tritanomaly

73.9847, 5.5383, 4.7843

Monochromacy



Original Color

73.9615, 1.6391, 10.9889

Achromatopsia

74.2975, -3.9643, 4.0367

Achromatomaly

74.0661, -2.0220, 6.6072

CSS Examples

Text

The CSS property to change the color of the text to HunterLab 73.9615, 1.6391, 10.9889 is called "color". The color property can be set on classes, ids or directly on the HTML element.

This example shows how text in the color `rgb(213, 191, 180)` looks like.

```
.text, #text, p{  
    color:rgb(213, 191, 180)  
}
```

If you want to add a text shadow in that color use the text-shadow property, you can generate a text shadow directly with our [CSS Text Shadow Generator](#).

Here you see how black text with a 4 pixel rgb(213, 191, 180) colored shadow looks like.

```
.shadow{ text-shadow: 4px 4px 2px rgb(213, 191, 180) }
```

Border

The CSS property to change the border of an element to HunterLab 73.9615, 1.6391, 10.9889 is called "border". The border property can be set on classes, ids or directly on the HTML element.

This example shows the color as border, it can be applied via the CSS property "border" or "border-color".

```
.border, #border, table{ border:4px solid rgb(213, 191, 180) }
```


If only the border color should be changed use the property `border-color`.

```
.border{ border-color:rgb(213, 191, 180) }
```

If you want to add a box shadow in that color use:

Here you see how a box with a 4 pixel `rgb(213, 191, 180)` colored shadow looks like.

```
.boxshadow{ -moz-box-shadow:4px 4px 4px  
4px rgb(213, 191, 180); -webkit-box-  
shadow:4px 4px 4px 4px rgb(213, 191, 180);  
box-shadow:4px 4px 4px 4px rgb(213, 191,  
180) }
```

Background

The CSS property to change the background color of an element to HunterLab 73.9615, 1.6391, 10.9889 is called "background". The background property can be set on classes, ids or directly on the HTML element.

```
.background, #background, body{  
background: rgb(213, 191, 180) }
```

If only the background color should be changed can be used:

```
.background{ background-color: rgb(213,  
191, 180) }
```

This example shows the color as background, it is applied via the CSS property "background".

To optimize and compress your CSS code, you can use our [online CSS compressor and optimizer](#) based on csstidy. If you want to create a linear or radial gradient as background or border, check our [CSS Gradient Generator](#).

Hey! You found this booklet interesting? Support Converting Colors with the new Membership Option!

The pro membership hides all ads, plus gives you double the colors in the color bucket, and more awesome pro features!

[Learn more, Memberships starting at \\$2.50/m!](#)

**Follow me
on Twitter!**

@ConvertingColor