

Converting Colors

HunterLab(74.0184, 0.7393,
5.6340)

Have a look what the booklet for
HunterLab(74.0184, 0.7393, 5.6340)
contains.

HunterLab(74.0071, 0.9640, 5.6675)	3
<i>Conversions</i>	4
<i>Details</i>	6
<i>Harmonies</i>	12
<i>Previews</i>	24
<i>Color Blindness Simulation</i>	28
<i>CSS Examples</i>	31

Color

**HunterLab(74.0071, 0.9640,
5.6675)**

Conversions

Conversions Part 1

Format	Color
Hex	CFC0C0
RGB	207, 192, 192
RGB Percent	81%, 75%, 75%
CMY	0.1882, 0.2470, 0.2471
CMYK	0.00, 0.07, 0.07, 0.19
HSL	0°, 14%, 78%
HSV	0°, 7%, 81%
XYZ	54.0963, 54.7705, 57.5898
YIQ	196.4850, 8.9400, 3.1800

Conversions

Conversions Part 2

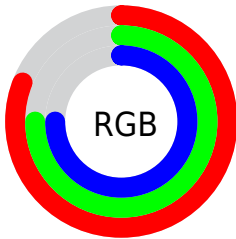
Format	Color
R _Y B	207, 192, 192
Decimal	13615296
CIE Lab	78.91, 5.27, 1.89
CIE LCh	79, 5.600, 19.774
Yxy	54.7729, 0.3250, 0.3290
Android (android.graphics.Color)	4291805376 (0xFFCFC0C0)
YUV	196.4850, -2.2111, 9.2217
Hunter-Lab	74.0071, 0.9640, 5.6675

Details

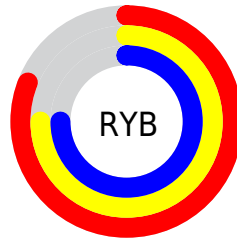
The HunterLab color $74.0071, 0.9640, 5.6675$ is a light color, and the websafe version is hex `CCCCCC`. A complement of this color would be $77.6764, -8.8235, 2.6503$, and the grayscale version is $74.5113, -3.9757, 4.0483$.

A 20% lighter version of the original color is $97.5562, -2.8458, 6.0912$, and $52.0592, 1.5754, 4.2875$ is the 20% darker color. If you saturate the color by 10%, you get $67.4243, 8.3775, 7.6807$, and if you desaturate by 10%, it is $80.9273, -6.1416, 3.7851$.

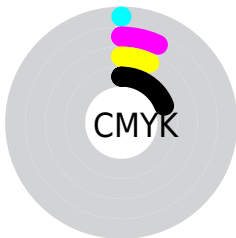
Distribution



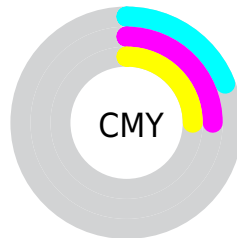
- Red (81%)
- Green (75%)
- Blue (75%)



- Red (81%)
- Yellow (75%)
- Blue (75%)



- Cyan (0%)
- Magenta (7%)
- Yellow (7%)
- Black (19%)



- Cyan (19%)
- Magenta (25%)
- Yellow (25%)

Brightness & Saturation Gradients

These gradients show how the HunterLab color 74.0071, 0.9640, 5.6675 changes by changing the brightness by 10 percent. The first figure shows a shift by +10% for each color and the second figure -10%.

Similar to the brightness gradients but the following saturation gradients show a change of the HunterLab color 74.0071, 0.9640, 5.6675 by changing the saturation by 10% instead.

■ 74.0071, 0.9640,
5.6675

■ 74.0071, 0.9640,
5.6675

201.2587, -3.9319,
13.2574

■ 62.6258, 1.3109,
4.9582

■ 98.5942, 0.1299,
7.1752

■ 51.8950, 1.6097,
4.2774

111.7404, -0.3471,
7.9693

■ 41.8585, 1.8530,
3.6276

125.4240, -0.8615,
8.7894

■ 32.5682, 2.0339,
3.0098

139.6246, -1.4113,
9.6350

■ 24.0897, 2.1427,
2.4250

154.3240, -1.9946,
10.5052

■ 16.5098, 2.1652,
1.8737

169.5058, -2.6101,

■ 9.9513, 2.0783,

11.3994

1.3559

185.1552, -3.2563,
12.3170

0.0000, INF, NaN

0.0000, NaN, NaN

■ 74.0071, 0.9640,
5.6675

■ 74.0071, 0.9640,
5.6675

■ 67.4243, 8.3775,
7.6807

■ 80.9273, -6.1416,
3.7851

■ 61.2343, 16.1188,
9.8301

■ 88.1327, -12.9659,
2.0156

■ 55.5144, 24.1565,
12.1124

■ 95.5871, -19.5493,
0.3446

■ 50.3580, 32.3772,
14.4961

■ 95.9195, -19.8359,
0.2788

■ 45.8750, 40.5270,

16.9040

■ 42.1838, 48.1588,
19.1947

■ 39.3901, 54.6425,
21.1646

■ 37.5507, 59.3181,
22.5967

■ 36.6099, 61.8536,
23.3766

Harmonies

Analogous

The Analogous color harmony consists of three colors that are next to each other on the color wheel.



74.0087, 1.1900, 3.1524



74.0071, 0.9640, 5.6675



74.0087, -0.5935, 7.6764

Triad

The Triadic color harmony groups three colors that are evenly spaced from another and form a triangle on the color wheel.



74.0087, 0.9620, 5.6687



74.0087, -7.8486, 7.1266



74.0087, -4.8661, -0.9629

Complementary

The Complementary color scheme is a pair of colors which are on the opposite of each other on the color wheel.



74.0071, 0.9640, 5.6675



77.6764, -8.8235, 2.6503

Split Complementary

Split-complementary colors differ from the complementary color scheme. The scheme consists of three colors, the original color and two neighbors of the complement color.



74.0087, -7.2534, 0.1849



74.0071, 0.9640, 5.6675



74.0087, -8.9591, 4.8940

Square

The Square scheme is like the rectangle color scheme, but the four colors are evenly spaced on the color wheel.



74.0087, 0.9620, 5.6687



74.0087, -5.6892, 8.4971



74.0087, -8.7428, 2.3499



74.0087, -2.2005, -0.7374

Rectangle

The Rectangle color scheme consists of four colors that form a rectangle on the color wheel.



74.0071, 0.9640, 5.6675



74.0087, -2.1618, 8.4847



74.0087, -8.7428, 2.3499



74.0087, -5.7271, -0.7233

Sweetspot

The Sweet Spot groups the original color and five complimentary colors.



74.0087, 0.9620, 5.6687



98.2170, -3.5251, 5.9119



74.4785, 3.5043, -1.0390



45.4804, -1.6726, 2.7241

0.0000, NaN, NaN



46.2646, -2.4686, 2.5136

Same Dimension

The Same Dimension uses a secret algorithm to generate beautiful new colors.



74.0087, 0.9620, 5.6687



92.1051, 2.9355, 7.6380



76.2557, -2.8631, 8.1636



34.3638, 1.2043, 2.8863



28.9114, 49.5038, 18.6817



6.8376, 11.7016, 4.4182

Inverse Universe

The Inverse Universe completely reimagines the original color for something new.



77.6764, -8.8235, 2.6503



97.9289, -12.6081, 2.8433



75.3589, -5.0593, -0.0975



36.6150, -4.8047, 1.0327



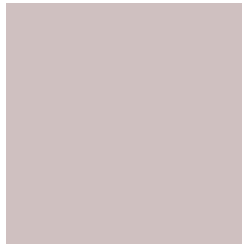
55.6233, -29.4800, -5.8855



13.1533, -6.9716, -1.3909

Previews

White Background



This preview shows how the HunterLab color 74.0071, 0.9640, 5.6675 looks on a white background.

Color Contrast Check

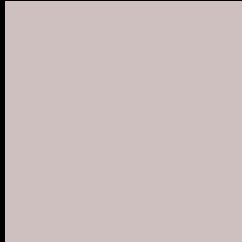
Large Text (above 18pt) WCAG AA × Fail

Any Text WCAG AA × Fail

Large Text (above 18pt) WCAG AAA × Fail

Any Text WCAG AAA × Fail

Black Background



This preview shows how the HunterLab color 74.0071, 0.9640, 5.6675 looks on a black background.

Color Contrast Check

Large Text (above 18pt) WCAG AA ✓ Pass

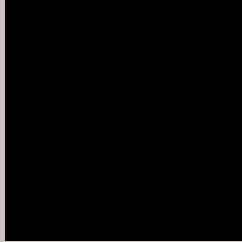
Any Text WCAG AA ✓ Pass

Large Text (above 18pt) WCAG AAA ✓ Pass

Any Text WCAG AAA ✓ Pass

If you want to check with other color combinations, try the [Color Contrast Checker](#).

HunterLab 74.0071, 0.9640, 5.6675 Background



This preview shows how black text looks on a background with the HunterLab color 74.0071, 0.9640, 5.6675.



This preview shows how white text looks on a background with the HunterLab color 74.0071, 0.9640,

Color Blindness Simulation

Color vision deficiency is a very complex topic, and I could not describe the different causes any better than Wikipedia does, so if you want to learn more, you should check out their [article about color blindness](#).

Dichromacy



Original Color

74.0071, 0.9640, 5.6675

Protanopia

73.8755, -2.5013, 4.9868

Deuteranopia

73.9544, 5.3763, 5.2165



Tritanopia

74.0203, 4.8512, -0.5678

Trichromacy



Original Color

74.0071, 0.9640, 5.6675

Protanomaly

73.8558, -1.0259, 4.9897

Deuteranomaly

73.9420, 3.8342, 5.1751

Tritanomaly

74.0551, 3.1389, 1.9387

Monochromacy



Original Color

74.0071, 0.9640, 5.6675

Achromatopsia

74.2975, -3.9643, 4.0367

Achromatomaly

74.3301, -2.3571, 4.5778

CSS Examples

Text

The CSS property to change the color of the text to HunterLab 74.0071, 0.9640, 5.6675 is called "color". The color property can be set on classes, ids or directly on the HTML element.

This example shows how text in the color `rgb(207, 192, 192)` looks like.

```
.text, #text, p{  
    color:rgb(207, 192, 192)  
}
```

If you want to add a text shadow in that color use the text-shadow property, you can generate a text shadow directly with our [CSS Text Shadow Generator](#).

Here you see how black text with a 4 pixel rgb(207, 192, 192) colored shadow looks like.

```
.shadow{ text-shadow: 4px 4px 2px rgb(207, 192, 192) }
```

Border

The CSS property to change the border of an element to HunterLab 74.0071, 0.9640, 5.6675 is called "border". The border property can be set on classes, ids or directly on the HTML element.

This example shows the color as border, it can be applied via the CSS property "border" or "border-color".

```
.border, #border, table{ border:4px solid rgb(207, 192, 192) }
```


If only the border color should be changed use the property border-color.

```
.border{ border-color:rgb(207, 192, 192) }
```

If you want to add a box shadow in that color use:

Here you see how a box with a 4 pixel rgb(207, 192, 192) colored shadow looks like.

```
.boxshadow{ -moz-box-shadow:4px 4px 4px  
4px rgb(207, 192, 192); -webkit-box-  
shadow:4px 4px 4px 4px rgb(207, 192, 192);  
box-shadow:4px 4px 4px 4px rgb(207, 192,  
192) }
```

Background

The CSS property to change the background color of an element to HunterLab 74.0071, 0.9640, 5.6675 is called "background". The background property can be set on classes, ids or directly on the HTML element.

```
.background, #background, body{  
background: rgb(207, 192, 192) }
```

If only the background color should be changed can be used:

```
.background{ background-color: rgb(207,  
192, 192) }
```

This example shows the color as background, it is applied via the CSS property "background".

To optimize and compress your CSS code, you can use our [online CSS compressor and optimizer](#) based on csstidy. If you want to create a linear or radial gradient as background or border, check our [CSS Gradient Generator](#).

Hey! You found this booklet interesting? Support Converting Colors with the new Membership Option!

The pro membership hides all ads, plus gives you double the colors in the color bucket, and more awesome pro features!

[Learn more, Memberships starting at \\$2.50/m!](#)

**Follow me
on Twitter!**

@ConvertingColor