

Converting Colors

HunterLab(74.0188, 7.0135,
7.5000)

Have a look what the booklet for
HunterLab(74.0188, 7.0135, 7.5000)
contains.

HunterLab(74.0358, 6.8409, 7.6392)	3
<i>Conversions</i>	4
<i>Details</i>	6
<i>Harmonies</i>	12
<i>Previews</i>	24
<i>Color Blindness Simulation</i>	28
<i>CSS Examples</i>	31

Color

**HunterLab(74.0358, 6.8409,
7.6392)**

Conversions

Conversions Part 1

Format	Color
Hex	DCBCBC
RGB	220, 188, 188
RGB Percent	86%, 74%, 74%
CMY	0.1373, 0.2627, 0.2627
CMYK	0.00, 0.15, 0.15, 0.14
HSL	0°, 31%, 80%
HSV	0°, 15%, 86%
XYZ	56.5756, 54.8130, 55.1752
YIQ	197.5680, 19.0720, 6.7840

Conversions

Conversions Part 2

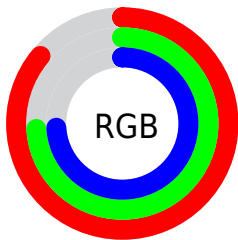
Format	Color
R _Y B	220, 188, 188
Decimal	14466236
CIE Lab	78.93, 11.40, 4.23
CIE LCh	79, 12.159, 20.357
Yxy	54.8155, 0.3397, 0.3291
Android (android.graphics.Color)	4292656316 (0xFFDCBCBC)
YUV	197.5680, -4.7170, 19.6729
Hunter-Lab	74.0358, 6.8409, 7.6392

Details

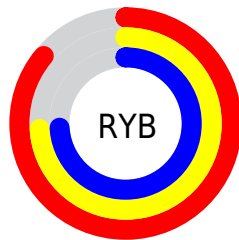
The HunterLab color $74.0358, 6.8409, 7.6392$ is a light color, and the websafe version is hex FFCCCC . A complement of this color would be $81.8803, -14.1242, 1.1772$, and the grayscale version is $74.9787, -4.0007, 4.0737$.

A 20% lighter version of the original color is $96.1733, -1.4099, 6.4726$, and $52.0351, 6.8901, 6.0670$ is the 20% darker color. If you saturate the color by 10%, you get $67.2639, 15.0705, 9.9113$, and if you desaturate by 10%, it is $81.2180, -1.0425, 5.5163$.

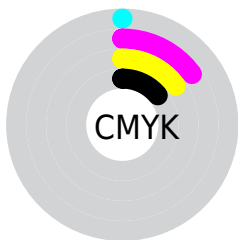
Distribution



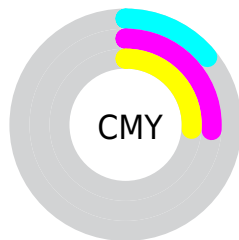
- Red (86%)
- Green (74%)
- Blue (74%)



- Red (86%)
- Yellow (74%)
- Blue (74%)



- Cyan (0%)
- Magenta (15%)
- Yellow (15%)
- Black (14%)




- Cyan (14%)
- Magenta (26%)
- Yellow (26%)

Brightness & Saturation Gradients


These gradients show how the HunterLab color 74.0358, 6.8409, 7.6392 changes by changing the brightness by 10 percent. The first figure shows a shift by +10% for each color and the second figure -10%.


Similar to the brightness gradients but the following saturation gradients show a change of the HunterLab color 74.0358, 6.8409, 7.6392 by changing the saturation by 10% instead.


 74.0358, 6.8409,
7.6392

 74.0358, 6.8409,
7.6392


201.2988, 4.1110,
16.0605

 62.6530, 6.8956,
6.8148


 98.6258, 6.5510,
9.3590

 51.9205, 6.8867,
6.0115


111.7734, 6.3297,
10.2518

 41.8822, 6.8036,
5.2299


125.4582, 6.0616,
11.1667

 32.5900, 6.6356,
4.4686

139.6601, 5.7498,
12.1032

 24.1095, 6.3681,
3.7249

154.3607, 5.3967,
13.0612

 16.5273, 5.9797,
2.9932

169.5437, 5.0046,

 9.9661, 5.4386,

14.0403

2.3281

185.1943, 4.5755,
15.0402

0.0000, INF, NaN

0.0000, NaN, NaN

■ 74.0358, 6.8409,
7.6392

■ 74.0358, 6.8409,
7.6392

■ 67.2639, 15.0705,
9.9113

■ 81.2180, -1.0425,
5.5163

■ 60.9747, 23.6371,
12.3291

■ 88.7443, -8.5954,
3.5271

■ 55.2660, 32.4443,
14.8692

■ 96.5680, -15.8579,
1.6566

■ 50.2526, 41.2619,
17.4626

■ 96.9308, -16.1833,
1.5759

■ 46.0622, 49.6612,

19.9749

■ 42.8155, 57.0003,
22.1995

■ 40.5915, 62.5467,
23.8967

■ 39.3775, 65.7824,
24.8921

■ 39.0082, 66.7989,
25.2061

Harmonies

Analogous

The Analogous color harmony consists of three colors that are next to each other on the color wheel.



74.0375, 7.4111, 2.2235



74.0358, 6.8409, 7.6392



74.0375, 3.3257, 11.7719

Triad

The Triadic color harmony groups three colors that are evenly spaced from another and form a triangle on the color wheel.



74.0375, 6.8386, 7.6404



74.0375, -12.3808, 10.5088



74.0375, -5.8208, -7.2588

Complementary

The Complementary color scheme is a pair of colors which are on the opposite of each other on the color wheel.



74.0358, 6.8409, 7.6392



81.8803, -14.1242, 1.1772

Split Complementary

Split-complementary colors differ from the complementary color scheme. The scheme consists of three colors, the original color and two neighbors of the complement color.



74.0375, -10.9637, -4.6501



74.0358, 6.8409, 7.6392



74.0375, -14.6732, 5.7922

Square

The Square scheme is like the rectangle color scheme, but the four colors are evenly spaced on the color wheel.



74.0375, 6.8386, 7.6404



74.0375, -7.8094, 13.3370



74.0375, -14.1625, 0.2282



74.0375, -0.0189, -6.6679

Rectangle

The Rectangle color scheme consists of four colors that form a rectangle on the color wheel.



74.0358, 6.8409, 7.6392



74.0375, -0.1526, 13.3763



74.0375, -14.1625, 0.2282



74.0375, -7.6810, -6.7198

Sweetspot

The Sweet Spot groups the original color and five complimentary colors.



74.0375, 6.8386, 7.6404



96.4495, -1.6985, 6.3965



75.0668, 12.2986, -7.0089



44.3164, -0.4661, 3.0444

0.0000, NaN, NaN



46.2646, -2.4686, 2.5136

Same Dimension

The Same Dimension uses a secret algorithm to generate beautiful new colors.



74.0375, 6.8386, 7.6404



85.3877, 10.5693, 9.7111



78.7610, -1.4295, 12.6914



36.1273, 1.2863, 3.0406



29.8837, 51.1728, 19.3101



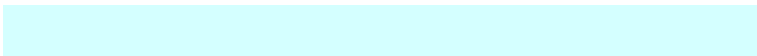
7.6069, 13.0229, 4.9153

Inverse Universe

The Inverse Universe completely reimagines the original color for something new.



81.8803, -14.1242, 1.1772



96.2713, -18.5516, 0.7317



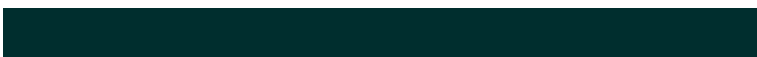
76.8409, -6.1246, -5.0035



38.5088, -5.0699, 1.0811



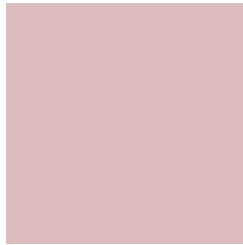
57.5024, -30.4804, -6.0746



14.6363, -7.7585, -1.5458

Previews

White Background



This preview shows how the HunterLab color 74.0358, 6.8409, 7.6392 looks on a white background.

Color Contrast Check

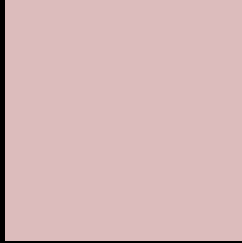
Large Text (above 18pt) WCAG AA × Fail

Any Text WCAG AA × Fail

Large Text (above 18pt) WCAG AAA × Fail

Any Text WCAG AAA × Fail

Black Background



This preview shows how the HunterLab color 74.0358, 6.8409, 7.6392 looks on a black background.

Color Contrast Check

Large Text (above 18pt) WCAG AA ✓ Pass

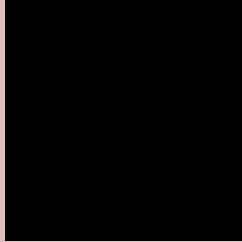
Any Text WCAG AA ✓ Pass

Large Text (above 18pt) WCAG AAA ✓ Pass

Any Text WCAG AAA ✓ Pass

If you want to check with other color combinations, try the [Color Contrast Checker](#).

HunterLab 74.0358, 6.8409, 7.6392 Background



This preview shows how black text looks on a background with the HunterLab color 74.0358, 6.8409, 7.6392.



This preview shows how white text looks on a background with the HunterLab color 74.0358, 6.8409,

7.6392.

Color Blindness Simulation

Color vision deficiency is a very complex topic, and I could not describe the different causes any better than Wikipedia does, so if you want to learn more, you should check out their [article about color blindness](#).

Dichromacy



Original Color

74.0358, 6.8409, 7.6392

Protanopia

74.2397, -2.8509, 5.8693

Deuteranopia

74.0120, 5.2728, 7.5849



Tritanopia

74.0705, 10.6927, 1.5974

Trichromacy



Original Color

74.0358, 6.8409, 7.6392

Protanomaly

73.9772, 0.8024, 6.0942

Deuteranomaly

74.1158, 5.6206, 7.7083

Tritanomaly

74.0934, 8.9885, 4.0230

Monochromacy



Original Color

74.0358, 6.8409, 7.6392

Achromatopsia

75.1473, -4.0097, 4.0829

Achromatomaly

74.5657, -0.0652, 5.3629

CSS Examples

Text

The CSS property to change the color of the text to HunterLab 74.0358, 6.8409, 7.6392 is called "color". The color property can be set on classes, ids or directly on the HTML element.

This example shows how text in the color `rgb(220, 188, 188)` looks like.

```
.text, #text, p{  
    color:rgb(220, 188, 188)  
}
```

If you want to add a text shadow in that color use the text-shadow property, you can generate a text shadow directly with our [CSS Text Shadow Generator](#).

Here you see how black text with a 4 pixel rgb(220, 188, 188) colored shadow looks like.

```
.shadow{ text-shadow: 4px 4px 2px rgb(220, 188, 188) }
```

Border

The CSS property to change the border of an element to HunterLab 74.0358, 6.8409, 7.6392 is called "border".

The border property can be set on classes, ids or directly on the HTML element.

This example shows the color as border, it can be applied via the CSS property "border" or "border-color".

```
.border, #border, table{ border:4px solid rgb(220, 188, 188) }
```


If only the border color should be changed use the property `border-color`.

```
.border{ border-color:rgb(220, 188, 188) }
```

If you want to add a box shadow in that color use:

Here you see how a box with a 4 pixel `rgb(220, 188, 188)` colored shadow looks like.

```
.boxshadow{ -moz-box-shadow:4px 4px 4px  
4px rgb(220, 188, 188); -webkit-box-  
shadow:4px 4px 4px 4px rgb(220, 188, 188);  
box-shadow:4px 4px 4px 4px rgb(220, 188,  
188) }
```

Background

The CSS property to change the background color of an element to HunterLab 74.0358, 6.8409, 7.6392 is called "background". The background property can be set on classes, ids or directly on the HTML element.

```
.background, #background, body{  
background: rgb(220, 188, 188) }
```

If only the background color should be changed can be used:

```
.background{ background-color: rgb(220,  
188, 188) }
```

This example shows the color as background, it is applied via the CSS property "background".

To optimize and compress your CSS code, you can use our [online CSS compressor and optimizer](#) based on csstidy. If you want to create a linear or radial gradient as background or border, check our [CSS Gradient Generator](#).

Hey! You found this booklet interesting? Support Converting Colors with the new Membership Option!

The pro membership hides all ads, plus gives you double the colors in the color bucket, and more awesome pro features!

[Learn more, Memberships starting at \\$2.50/m!](#)

**Follow me
on Twitter!**

@ConvertingColor