

# Converting Colors

HunterLab(74.0281, 7.2518,  
7.0619)

Have a look what the booklet for  
HunterLab(74.0281, 7.2518, 7.0619)  
contains.

<b>HunterLab(74.0650, 6.9967, 7.2210)</b> .....	3
<b><i>Conversions</i></b> .....	4
<b><i>Details</i></b> .....	6
<b><i>Harmonies</i></b> .....	12
<b><i>Previews</i></b> .....	24
<b><i>Color Blindness Simulation</i></b> .....	28
<b><i>CSS Examples</i></b> .....	31

# Color

**HunterLab(74.0650, 6.9967,  
7.2210)**

# Conversions

## Conversions Part 1

Format	Color
Hex	DCBCBD
RGB	220, 188, 189
RGB Percent	86%, 74%, 74%
CMY	0.1373, 0.2627, 0.2588
CMYK	0.00, 0.15, 0.14, 0.14
HSL	358°, 31%, 80%
HSV	358°, 15%, 86%
XYZ	56.6838, 54.8562, 55.7449
YIQ	197.6820, 18.7510, 7.0950

# Conversions

## Conversions Part 2

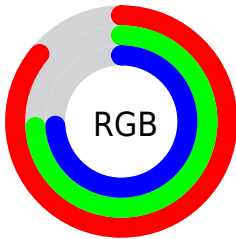
<b>Format</b>	<b>Color</b>
<b>R<sub>YB</sub></b>	220, 188, 189
Decimal	14466237
CIE <sub>Lab</sub>	78.96, 11.56, 3.73
CIE <sub>LCh</sub>	79, 12.145, 17.864
Yxy	54.8587, 0.3388, 0.3279
Android (android.graphics.Color)	4292656317 (0xFFDCBCBD)
YUV	197.6820, -4.2802, 19.5729
Hunter-Lab	74.0650, 6.9967, 7.2210

# Details

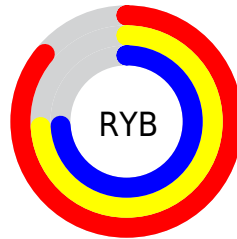
The HunterLab color  $74.0650, 6.9967, 7.2210$  is a light color, and the websafe version is hex  $\text{FFCCCC}$ . A complement of this color would be  $81.8497, -14.3050, 1.6363$ , and the grayscale version is  $75.0255, -4.0032, 4.0763$ .

A 20% lighter version of the original color is  $96.2050, -1.2376, 6.0206$ , and  $52.0623, 7.0340, 5.6775$  is the 20% darker color. If you saturate the color by 10%, you get  $67.3094, 15.3124, 9.2467$ , and if you desaturate by 10%, it is  $81.2284, -0.9913, 5.3791$ .

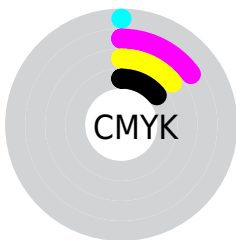
# Distribution



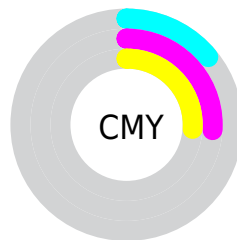
- Red (86%)
- Green (74%)
- Blue (74%)



- Red (86%)
- Yellow (74%)
- Blue (74%)



- Cyan (0%)
- Magenta (15%)
- Yellow (14%)
- Black (14%)




- Cyan (14%)
- Magenta (26%)
- Yellow (26%)

# Brightness & Saturation Gradients

These gradients show how the HunterLab color 74.0650, 6.9967, 7.2210 changes by changing the brightness by 10 percent. The first figure shows a shift by +10% for each color and the second figure -10%.


Similar to the brightness gradients but the following saturation gradients show a change of the HunterLab color 74.0650, 6.9967, 7.2210 by changing the saturation by 10% instead.





 74.0650, 6.9967,  
7.2210

 74.0650, 6.9967,  
7.2210

201.3395, 4.3218,  
15.4622

 62.6806, 7.0441,  
6.4217


 98.6579, 6.7205,  
8.8948

 51.9464, 7.0274,  
5.6450


111.8069, 6.5057,  
9.7662

 41.9064, 6.9362,  
4.8921


125.4931, 6.2439,  
10.6605

 32.6123, 6.7596,  
4.1622

139.6961, 5.9381,  
11.5774

 24.1296, 6.4829,  
3.4533

154.3980, 5.5909,  
12.5164

 16.5450, 6.0846,  
2.7613

169.5822, 5.2045,

 9.9810, 5.5329,

13.4771

2.1184

185.2339, 4.7809,  
14.4592

0.0000, INF, NaN

0.0000, NaN, NaN

■ 74.0650, 6.9967,  
7.2210

■ 74.0650, 6.9967,  
7.2210

■ 67.3094, 15.3124,  
9.2467

■ 81.2284, -0.9913,  
5.3791

■ 61.0334, 23.9421,  
11.4631

■ 88.7341, -8.6634,  
3.6977

■ 55.3337, 32.7847,  
13.8611

■ 96.5357, -16.0570,  
2.1564

■ 50.3242, 41.6060,  
16.3893

■ 96.9308, -16.1834,  
1.5759

■ 46.1313, 49.9761,

18.9318

■ 42.8751, 57.2568,  
21.2952

■ 40.6349, 62.7245,  
23.2347

■ 39.4006, 65.8738,  
24.5393

■ 39.0266, 66.8728,  
24.9200

# Harmonies

## Analogous

The Analogous color harmony consists of three colors that are next to each other on the color wheel.



74.0667, 7.3006, 1.7595



74.0650, 6.9967, 7.2210



74.0667, 3.6991, 11.4965

# Triad

The Triadic color harmony groups three colors that are evenly spaced from another and form a triangle on the color wheel.



74.0667, 6.9944, 7.2222



74.0667, -12.0700, 10.8213



74.0667, -6.2930, -7.1444

# Complementary

The Complementary color scheme is a pair of colors which are on the opposite of each other on the color wheel.



74.0650, 6.9967, 7.2210



81.8497, -14.3050, 1.6363

# Split Complementary

Split-complementary colors differ from the complementary color scheme. The scheme consists of three colors, the original color and two neighbors of the complement color.



74.0667, -11.3123, -4.3014



74.0650, 6.9967, 7.2210



74.0667, -14.5780, 6.2340

# Square

The Square scheme is like the rectangle color scheme, but the four colors are evenly spaced on the color wheel.



74.0667, 6.9944, 7.2222



74.0667, -7.3564, 13.4615



74.0667, -14.3050, 0.6925



74.0667, -0.4931, -6.8284



# Rectangle

The Rectangle color scheme consists of four colors that form a rectangle on the color wheel.



74.0650, 6.9967, 7.2210



74.0667, 0.3063, 13.2267



74.0667, -14.3050, 0.6925



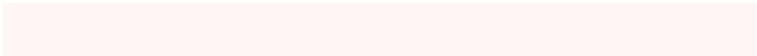
74.0667, -8.1240, -6.5180

# Sweetspot

The Sweet Spot groups the original color and five complimentary colors.



74.0667, 6.9944, 7.2222



96.4591, -1.6431, 6.2525



74.9573, 11.9357, -7.1608



44.3217, -0.4358, 2.9656

0.0000, NaN, NaN



46.2646, -2.4686, 2.5136



# Same Dimension

The Same Dimension uses a secret algorithm to generate beautiful new colors.



74.0667, 6.9944, 7.2222



85.4261, 10.7839, 9.1372



78.4403, -0.8835, 12.3552



36.1359, 1.3356, 2.9113



29.9027, 51.2489, 19.0158



7.6266, 13.1019, 4.6099



# Inverse Universe

The Inverse Universe completely reimagines the original color for something new.



74.0667, 6.9944, 7.2222



85.4261, 10.7839, 9.1372



77.1721, -6.6635, -4.5846



36.1359, 1.3356, 2.9113



29.9027, 51.2489, 19.0158

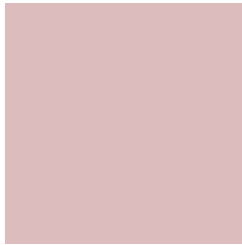


7.6266, 13.1019, 4.6099



# Previews

## White Background



This preview shows how the HunterLab color 74.0650, 6.9967, 7.2210 looks on a white background.

## Color Contrast Check

Large Text (above 18pt) WCAG AA × Fail

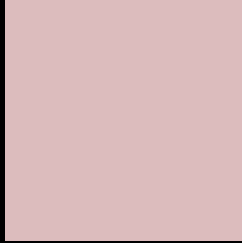
Any Text WCAG AA × Fail

Large Text (above 18pt) WCAG AAA × Fail

Any Text WCAG AAA × Fail



# Black Background



This preview shows how the HunterLab color 74.0650, 6.9967, 7.2210 looks on a black background.

## Color Contrast Check

Large Text (above 18pt) WCAG AA ✓ Pass

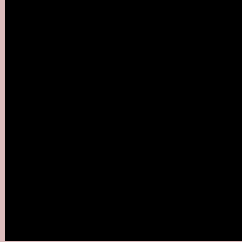
Any Text WCAG AA ✓ Pass

Large Text (above 18pt) WCAG AAA ✓ Pass

Any Text WCAG AAA ✓ Pass

If you want to check with other color combinations, try the [Color Contrast Checker](#).

## HunterLab 74.0650, 6.9967, 7.2210 Background



This preview shows how black text looks on a background with the HunterLab color 74.0650, 6.9967, 7.2210.



This preview shows how white text looks on a background with the HunterLab color 74.0650, 6.9967,



# Color Blindness Simulation

Color vision deficiency is a very complex topic, and I could not describe the different causes any better than Wikipedia does, so if you want to learn more, you should check out their [article about color blindness](#).

## Dichromacy



### Original Color

74.0650, 6.9967, 7.2210

### Protanopia

74.2697, -2.6872, 5.4413

### Deuteranopia

74.0412, 5.4293, 7.1665



## Tritanopia

74.0705, 10.6927, 1.5974

# Trichromacy



## Original Color

74.0650, 6.9967, 7.2210

## Protanomaly

74.0071, 0.9640, 5.6675

## Deuteranomaly

74.1450, 5.7768, 7.2905

## Tritanomaly

74.1242, 9.1520, 3.5833

# Monochromacy



## Original Color

74.0650, 6.9967, 7.2210

## Achromatopsia

75.1473, -4.0097, 4.0829

## Achromatomaly

74.5959, 0.0988, 4.9313

# CSS Examples

## Text

The CSS property to change the color of the text to HunterLab 74.0650, 6.9967, 7.2210 is called "color". The color property can be set on classes, ids or directly on the HTML element.

This example shows how text in the color `rgb(220, 188, 189)` looks like.

```
.text, #text, p{  
    color:rgb(220, 188, 189)  
}
```

If you want to add a text shadow in that color use the text-shadow property, you can generate a text shadow directly with our [CSS Text Shadow Generator](#).

Here you see how black text with a 4 pixel rgb(220, 188, 189) colored shadow looks like.

```
.shadow{ text-shadow: 4px 4px 2px rgb(220, 188, 189) }
```

## Border

The CSS property to change the border of an element to HunterLab 74.0650, 6.9967, 7.2210 is called "border". The border property can be set on classes, ids or directly on the HTML element.

This example shows the color as border, it can be applied via the CSS property "border" or "border-color".

```
.border, #border, table{ border:4px solid rgb(220, 188, 189) }
```



If only the border color should be changed use the property `border-color`.

```
.border{ border-color:rgb(220, 188, 189) }
```

If you want to add a box shadow in that color use:

Here you see how a box with a 4 pixel `rgb(220, 188, 189)` colored shadow looks like.

```
.boxshadow{ -moz-box-shadow:4px 4px 4px  
4px rgb(220, 188, 189); -webkit-box-  
shadow:4px 4px 4px 4px rgb(220, 188, 189);  
box-shadow:4px 4px 4px 4px rgb(220, 188,  
189) }
```

# Background

The CSS property to change the background color of an element to HunterLab 74.0650, 6.9967, 7.2210 is called "background". The background property can be set on classes, ids or directly on the HTML element.

```
.background, #background, body{  
background: rgb(220, 188, 189) }
```

If only the background color should be changed can be used:

```
.background{ background-color: rgb(220,  
188, 189) }
```

This example shows the color as background, it is applied via the CSS property "background".

To optimize and compress your CSS code, you can use our [online CSS compressor and optimizer](#) based on csstidy. If you want to create a linear or radial gradient as background or border, check our [CSS Gradient Generator](#).

Hey! You found this booklet interesting? Support Converting Colors with the new Membership Option!

The pro membership hides all ads, plus gives you double the colors in the color bucket, and more awesome pro features!

**[Learn more, Memberships starting at \\$2.50/m!](#)**

**Follow me  
on Twitter!**

@ConvertingColor