

Converting Colors

HunterLab(74.0338, 8.3212,
9.5786)

Have a look what the booklet for
HunterLab(74.0338, 8.3212, 9.5786)
contains.

HunterLab(74.0599, 8.1691, 9.4746)	3
<i>Conversions</i>	4
<i>Details</i>	6
<i>Harmonies</i>	12
<i>Previews</i>	24
<i>Color Blindness Simulation</i>	28
<i>CSS Examples</i>	31

Color

**HunterLab(74.0599, 8.1691,
9.4746)**

Conversions

Conversions Part 1

Format	Color
Hex	E0BBB8
RGB	224, 187, 184
RGB Percent	88%, 73%, 72%
CMY	0.1216, 0.2666, 0.2784
CMYK	0.00, 0.17, 0.18, 0.12
HSL	5°, 39%, 80%
HSV	5°, 18%, 88%
XYZ	57.1626, 54.8487, 52.9216
YIQ	197.7210, 23.0150, 6.9110

Conversions

Conversions Part 2

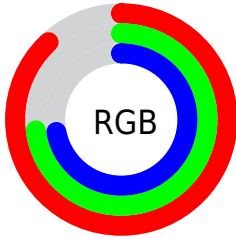
Format	Color
RYB	224, 187, 184
Decimal	14728120
CIELab	78.96, 12.76, 6.47
CIELCh	79, 14.305, 26.874
Yxy	54.8512, 0.3466, 0.3326
Android (android.graphics.Color)	4292918200 (0xFFE0BBB8)
YUV	197.7210, -6.7645, 23.0467
Hunter-Lab	74.0599, 8.1691, 9.4746

Details

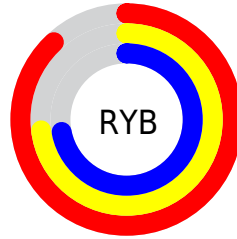
The HunterLab color $74.0599, 8.1691, 9.4746$ is a light color, and the websafe version is hex FFCCCC . A complement of this color would be $82.0266, -14.9860, -0.6919$, and the grayscale version is $75.0510, -4.0045, 4.0777$.

A 20% lighter version of the original color is $95.7353, -1.5598, 7.9095$, and $51.9747, 7.8518, 7.6691$ is the 20% darker color. If you saturate the color by 10%, you get $67.6898, 15.8086, 12.2087$, and if you desaturate by 10%, it is $80.8085, 0.8811, 6.7781$.

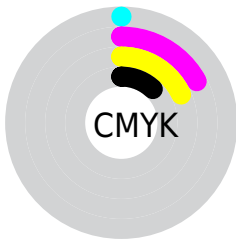
Distribution



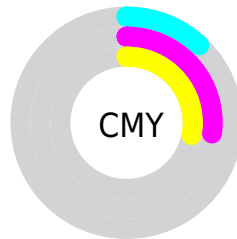
- Red (88%)
- Green (73%)
- Blue (72%)



- Red (88%)
- Yellow (73%)
- Blue (72%)



- Cyan (0%)
- Magenta (17%)
- Yellow (18%)
- Black (12%)





- Cyan (12%)
- Magenta (27%)
- Yellow (28%)

Brightness & Saturation Gradients

These gradients show how the HunterLab color 74.0599, 8.1691, 9.4746 changes by changing the brightness by 10 percent. The first figure shows a shift by +10% for each color and the second figure -10%.

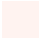
Similar to the brightness gradients but the following saturation gradients show a change of the HunterLab color 74.0599, 8.1691, 9.4746 by changing the saturation by 10% instead.


 74.0599, 8.1691,
9.4746

 74.0599, 8.1691,
9.4746


201.3324, 5.9124,
18.7065

 62.6758, 8.1604,
8.5372


 98.6523, 7.9975,
11.4021

 51.9419, 8.0850,
7.6131


111.8010, 7.8320,
12.3914

 41.9022, 7.9317,
6.7011


125.4870, 7.6177,
13.3985

 32.6084, 7.6892,
5.7974

139.6899, 7.3579,
14.4238

 24.1261, 7.3419,
4.8952

154.3915, 7.0553,
15.4673

 16.5419, 6.8678,
3.9821

169.5755, 6.7121,

 9.9784, 6.2348,

16.5289

3.2569

185.2270, 6.3306,
17.6087

0.0000, INF, NaN

0.0000, NaN, NaN

■ 74.0599, 8.1691,
9.4746

■ 74.0599, 8.1691,
9.4746

■ 67.6898, 15.8086,
12.2087

■ 80.8085, 0.8811,
6.7781

■ 61.7599, 23.7965,
14.9493

■ 87.8768, -6.0701,
4.1266

■ 56.3533, 32.0572,
17.6435

■ 95.2234, -12.7224,
1.5231

■ 51.5659, 40.4102,
20.1974

■ 97.2561, -15.0170,
1.9903

■ 47.5034, 48.5199,

22.4685

■ 44.2674, 55.8756,
24.2740

■ 41.9310, 61.8578,
25.4371

■ 40.5018, 65.9217,
25.9093

■ 40.3024, 66.4976,
25.9983

Harmonies

Analogous

The Analogous color harmony consists of three colors that are next to each other on the color wheel.



74.0616, 9.6642, 3.3446



74.0599, 8.1691, 9.4746



74.0616, 3.3827, 13.7781

Triad

The Triadic color harmony groups three colors that are evenly spaced from another and form a triangle on the color wheel.



74.0616, 8.1667, 9.4758



74.0616, -14.6696, 10.5587



74.0616, -4.6729, -9.6066

Complementary

The Complementary color scheme is a pair of colors which are on the opposite of each other on the color wheel.



74.0599, 8.1691, 9.4746



82.0266, -14.9860, -0.6919

Split Complementary

Split-complementary colors differ from the complementary color scheme. The scheme consists of three colors, the original color and two neighbors of the complement color.



74.0616, -11.0190, -7.2514



74.0599, 8.1691, 9.4746



74.0616, -16.6574, 4.7116

Square

The Square scheme is like the rectangle color scheme, but the four colors are evenly spaced on the color wheel.



74.0616, 8.1667, 9.4758



74.0616, -9.8176, 14.3622



74.0616, -15.3453, -1.8606



74.0616, 2.0943, -8.0422

Rectangle

The Rectangle color scheme consists of four colors that form a rectangle on the color wheel.



74.0599, 8.1691, 9.4746



74.0616, -0.9399, 15.2278



74.0616, -15.3453, -1.8606



74.0616, -6.9240, -9.2423

Sweetspot

The Sweet Spot groups the original color and five complimentary colors.



74.0616, 8.1667, 9.4758



95.8704, -1.2880, 6.9789



74.4092, 16.0619, -8.5614



44.0888, -0.3292, 3.3298

0.0000, NaN, NaN



46.2646, -2.4686, 2.5136

Same Dimension

The Same Dimension uses a secret algorithm to generate beautiful new colors.



74.0616, 8.1667, 9.4758



83.2988, 12.3293, 12.0148



79.8580, -2.0062, 15.5045



37.2357, 0.9414, 3.3650



30.8506, 50.3889, 19.8922



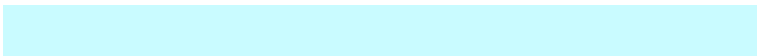
8.4756, 12.1197, 5.4348

Inverse Universe

The Inverse Universe completely reimagines the original color for something new.



82.0266, -14.9860, -0.6919



94.1705, -19.3208, -1.8761



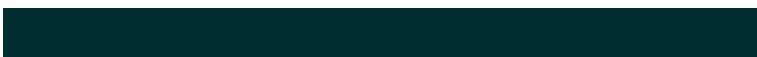
75.8300, -5.1491, -8.5035



39.2261, -4.8295, 0.8280



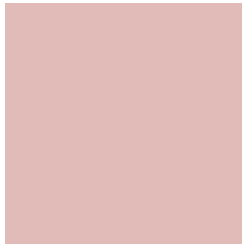
54.0679, -25.6792, -12.1462



14.4206, -6.9903, -2.9346

Previews

White Background



This preview shows how the HunterLab color 74.0599, 8.1691, 9.4746 looks on a white background.

Color Contrast Check

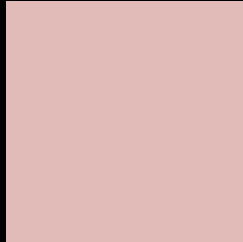
Large Text (above 18pt) WCAG AA × Fail

Any Text WCAG AA × Fail

Large Text (above 18pt) WCAG AAA × Fail

Any Text WCAG AAA × Fail

Black Background



This preview shows how the HunterLab color 74.0599, 8.1691, 9.4746 looks on a black background.

Color Contrast Check

Large Text (above 18pt) WCAG AA ✓ Pass

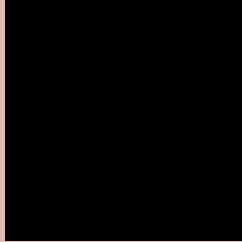
Any Text WCAG AA ✓ Pass

Large Text (above 18pt) WCAG AAA ✓ Pass

Any Text WCAG AAA ✓ Pass

If you want to check with other color combinations, try the [Color Contrast Checker](#).

HunterLab 74.0599, 8.1691, 9.4746 Background



This preview shows how black text looks on a background with the HunterLab color 74.0599, 8.1691, 9.4746.



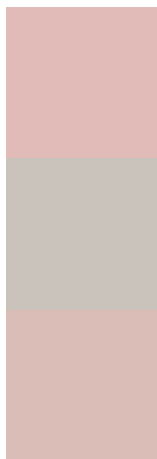
This preview shows how white text looks on a background with the HunterLab color 74.0599, 8.1691, 9.4746.

9.4746.

Color Blindness Simulation

Color vision deficiency is a very complex topic, and I could not describe the different causes any better than Wikipedia does, so if you want to learn more, you should check out their [article about color blindness](#).

Dichromacy



Original Color

74.0599, 8.1691, 9.4746

Protanopia

74.2149, -3.1724, 7.6663

Deuteranopia

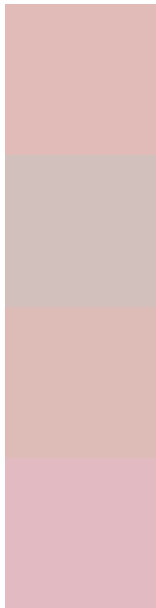
74.1053, 5.3560, 9.4757



Tritanopia

74.1554, 12.2999, 2.7083

Trichromacy



Original Color

74.0599, 8.1691, 9.4746

Protanomaly

74.0557, 0.8356, 8.0076

Deuteranomaly

74.0265, 6.5803, 9.4100

Tritanomaly

74.1757, 10.6035, 5.0960

Monochromacy



Original Color

74.0599, 8.1691, 9.4746

Achromatopsia

75.1473, -4.0097, 4.0829

Achromatomaly

74.6319, 0.1016, 5.9089

CSS Examples

Text

The CSS property to change the color of the text to HunterLab 74.0599, 8.1691, 9.4746 is called "color". The color property can be set on classes, ids or directly on the HTML element.

This example shows how text in the color `rgb(224, 187, 184)` looks like.

```
.text, #text, p{  
    color:rgb(224, 187, 184)  
}
```

If you want to add a text shadow in that color use the text-shadow property, you can generate a text shadow directly with our [CSS Text Shadow Generator](#).

Here you see how black text with a 4 pixel rgb(224, 187, 184) colored shadow looks like.

```
.shadow{ text-shadow: 4px 4px 2px rgb(224, 187, 184) }
```

Border

The CSS property to change the border of an element to HunterLab 74.0599, 8.1691, 9.4746 is called "border".

The border property can be set on classes, ids or directly on the HTML element.

This example shows the color as border, it can be applied via the CSS property "border" or "border-color".

```
.border, #border, table{ border:4px solid rgb(224, 187, 184) }
```


If only the border color should be changed use the property `border-color`.

```
.border{ border-color:rgb(224, 187, 184) }
```

If you want to add a box shadow in that color use:

Here you see how a box with a 4 pixel `rgb(224, 187, 184)` colored shadow looks like.

```
.boxshadow{ -moz-box-shadow:4px 4px 4px  
4px rgb(224, 187, 184); -webkit-box-  
shadow:4px 4px 4px 4px rgb(224, 187, 184);  
box-shadow:4px 4px 4px 4px rgb(224, 187,  
184) }
```

Background

The CSS property to change the background color of an element to HunterLab 74.0599, 8.1691, 9.4746 is called "background". The background property can be set on classes, ids or directly on the HTML element.

```
.background, #background, body{  
background: rgb(224, 187, 184) }
```

If only the background color should be changed can be used:

```
.background{ background-color: rgb(224,  
187, 184) }
```

This example shows the color as background, it is applied via the CSS property "background".

To optimize and compress your CSS code, you can use our [online CSS compressor and optimizer](#) based on csstidy. If you want to create a linear or radial gradient as background or border, check our [CSS Gradient Generator](#).

Hey! You found this booklet interesting? Support Converting Colors with the new Membership Option!

The pro membership hides all ads, plus gives you double the colors in the color bucket, and more awesome pro features!

[Learn more, Memberships starting at \\$2.50/m!](#)

**Follow me
on Twitter!**

@ConvertingColor