

Converting Colors

HunterLab(74.0406, 7.2454,
3.3750)

Have a look what the booklet for
HunterLab(74.0406, 7.2454, 3.3750)
contains.

HunterLab(73.9928, 7.2388, 3.3937)	3
<i>Conversions</i>	4
<i>Details</i>	6
<i>Harmonies</i>	12
<i>Previews</i>	24
<i>Color Blindness Simulation</i>	28
<i>CSS Examples</i>	31

Color

**HunterLab(73.9928, 7.2388,
3.3937)**

Conversions

Conversions Part 1

Format	Color
Hex	D9BCC5
RGB	217, 188, 197
RGB Percent	85%, 74%, 77%
CMY	0.1490, 0.2627, 0.2274
CMYK	0.00, 0.13, 0.09, 0.15
HSL	341°, 28%, 79%
HSV	341°, 13%, 85%
XYZ	56.6765, 54.7493, 60.4039
YIQ	197.6970, 14.3950, 8.9470

Conversions

Conversions Part 2

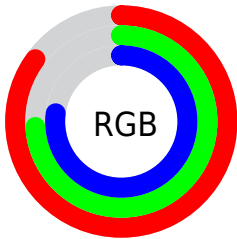
Format	Color
R _Y B	217, 188, 197
Decimal	14269637
CIE Lab	78.90, 11.81, -0.72
CIE LCh	79, 11.830, 356.514
Yxy	54.7518, 0.3298, 0.3186
Android (android.graphics.Color)	4292459717 (0xFFD9BCC5)
YUV	197.6970, -0.3436, 16.9287
Hunter-Lab	73.9928, 7.2388, 3.3937

Details

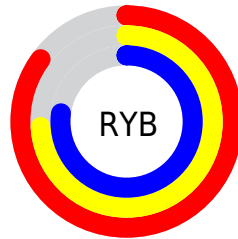
The HunterLab color $73.9928, 7.2388, 3.3937$ is a light color, and the websafe version is hex `CCCCCC`. A complement of this color would be $80.5434, -14.7628, 5.4420$, and the grayscale version is $75.0169, -4.0027, 4.0758$.

A 20% lighter version of the original color is $96.4972, 0.3492, 1.8554$, and $51.9543, 7.0740, 2.4821$ is the 20% darker color. If you saturate the color by 10%, you get $67.4642, 16.2259, 2.9452$, and if you desaturate by 10%, it is $80.9021, -1.5423, 4.1917$.

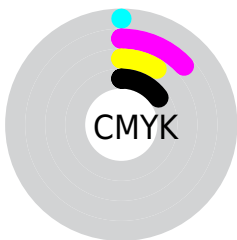
Distribution



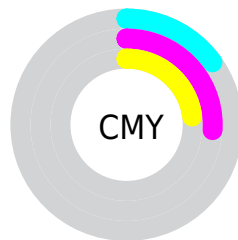
- Red (85%)
- Green (74%)
- Blue (77%)



- Red (85%)
- Yellow (74%)
- Blue (77%)



- Cyan (0%)
- Magenta (13%)
- Yellow (9%)
- Black (15%)



- Cyan (15%)
- Magenta (26%)
- Yellow (23%)

Brightness & Saturation Gradients

These gradients show how the HunterLab color 73.9928, 7.2388, 3.3937 changes by changing the brightness by 10 percent. The first figure shows a shift by +10% for each color and the second figure -10%.

Similar to the brightness gradients but the following saturation gradients show a change of the HunterLab color 73.9928, 7.2388, 3.3937 by changing the saturation by 10% instead.

73.9928, 7.2388,
3.3937

73.9928, 7.2388,
3.3937

201.2387, 4.6531,
10.0727

62.6123, 7.2743,
2.8094

98.5785, 6.9851,
4.6702

51.8823, 7.2451,
2.2613

111.7240, 6.7808,
5.3563

41.8466, 7.1405,
1.7535

125.4069, 6.5291,
6.0728

32.5573, 6.9496,
1.2894

139.6069, 6.2331,
6.8185

24.0799, 6.6575,
0.8734

154.3057, 5.8954,
7.5923

16.5012, 6.2427,
0.5116

169.4870, 5.5182,

9.9440, 5.6728,

8.3931

0.2132

185.1359, 5.1035,
9.2202

0.0000, INF, NaN

0.0000, NaN, NaN

■ 73.9928, 7.2388,
3.3937

■ 73.9928, 7.2388,
3.3937

■ 67.4642, 16.2259,
2.9452

■ 80.9021, -1.5423,
4.1917

■ 61.3796, 25.3763,
2.9204

■ 88.1325, -10.1045,
5.2711

■ 55.8251, 34.5615,
3.4095

■ 95.6420, -18.4651,
6.5823

■ 50.9008, 43.5301,
4.5017

■ 96.6912, -17.0452,
1.2698

■ 46.7184, 51.8590,

6.2608

■ 43.3866, 58.9482,
8.6837

■ 40.9837, 64.1290,
11.6526

■ 39.5176, 66.9264,
14.9152

■ 38.9372, 67.7319,
17.0143

Harmonies

Analogous

The Analogous color harmony consists of three colors that are next to each other on the color wheel.



73.9944, 5.3530, -1.9200



73.9928, 7.2388, 3.3937



73.9944, 6.0488, 8.5055

Triad

The Triadic color harmony groups three colors that are evenly spaced from another and form a triangle on the color wheel.



73.9944, 7.2367, 3.3950



73.9944, -8.7521, 12.7123



73.9944, -9.8662, -5.1454

Complementary

The Complementary color scheme is a pair of colors which are on the opposite of each other on the color wheel.



73.9928, 7.2388, 3.3937



80.5434, -14.7628, 5.4420

Split Complementary

Split-complementary colors differ from the complementary color scheme. The scheme consists of three colors, the original color and two neighbors of the complement color.



73.9944, -13.4485, -0.7487



73.9928, 7.2388, 3.3937



73.9944, -12.8190, 9.5193

Square

The Square scheme is like the rectangle color scheme, but the four colors are evenly spaced on the color wheel.



73.9944, 7.2367, 3.3950



73.9944, -3.2887, 13.6414



73.9944, -14.5132, 4.6549



73.9944, -4.6132, -7.0788

Rectangle

The Rectangle color scheme consists of four colors that form a rectangle on the color wheel.



73.9928, 7.2388, 3.3937



73.9944, 3.6937, 11.1579



73.9944, -14.5132, 4.6549



73.9944, -11.2996, -3.8912

Sweetspot

The Sweet Spot groups the original color and five complimentary colors.



73.9944, 7.2367, 3.3950



96.5500, -1.1489, 4.9561



73.7307, 7.6846, -7.2219



44.3715, -0.1650, 2.2542

0.0000, NaN, NaN



46.2646, -2.4686, 2.5136

Same Dimension

The Same Dimension uses a secret algorithm to generate beautiful new colors.



73.9944, 7.2367, 3.3950



86.5983, 11.6679, 3.8798



75.2761, 3.0360, 8.9624



36.2184, 1.7795, 1.7339



30.3222, 52.7998, 12.8329



7.8159, 13.7991, 1.8407

Inverse Universe

The Inverse Universe completely reimagines the original color for something new.



73.9944, 7.2367, 3.3950



86.5983, 11.6679, 3.8798



79.1400, -10.5416, -0.5996



36.2184, 1.7795, 1.7339



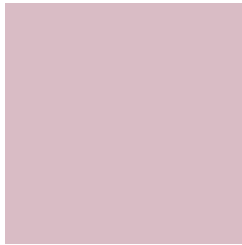
30.3222, 52.7998, 12.8329



7.8159, 13.7991, 1.8407

Previews

White Background



This preview shows how the HunterLab color 73.9928, 7.2388, 3.3937 looks on a white background.

Color Contrast Check

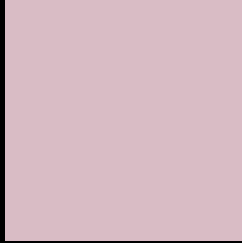
Large Text (above 18pt) WCAG AA × Fail

Any Text WCAG AA × Fail

Large Text (above 18pt) WCAG AAA × Fail

Any Text WCAG AAA × Fail

Black Background



This preview shows how the HunterLab color 73.9928, 7.2388, 3.3937 looks on a black background.

Color Contrast Check

Large Text (above 18pt) WCAG AA ✓ Pass

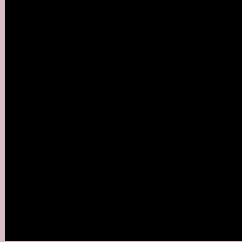
Any Text WCAG AA ✓ Pass

Large Text (above 18pt) WCAG AAA ✓ Pass

Any Text WCAG AAA ✓ Pass

If you want to check with other color combinations, try the [Color Contrast Checker](#).

HunterLab 73.9928, 7.2388, 3.3937 Background



This preview shows how black text looks on a background with the HunterLab color 73.9928, 7.2388, 3.3937.



This preview shows how white text looks on a background with the HunterLab color 73.9928, 7.2388,

Color Blindness Simulation

Color vision deficiency is a very complex topic, and I could not describe the different causes any better than Wikipedia does, so if you want to learn more, you should check out their [article about color blindness](#).

Dichromacy



Original Color

73.9928, 7.2388, 3.3937

Protanopia

73.9398, -1.7831, 1.2202

Deuteranopia

73.9747, 5.6889, 3.3451



Tritanopia

73.9664, 8.9456, 0.9444

Trichromacy



Original Color

73.9928, 7.2388, 3.3937

Protanomaly

73.9640, 1.3097, 1.7966

Deuteranomaly

74.0766, 6.0300, 3.4721

Tritanomaly

73.9028, 8.6078, 1.8503

Monochromacy



Original Color

73.9928, 7.2388, 3.3937

Achromatopsia

75.1473, -4.0097, 4.0829

Achromatomaly

74.5922, 0.2697, 3.5021

CSS Examples

Text

The CSS property to change the color of the text to HunterLab 73.9928, 7.2388, 3.3937 is called "color". The color property can be set on classes, ids or directly on the HTML element.

This example shows how text in the color `rgb(217, 188, 197)` looks like.

```
.text, #text, p{  
    color:rgb(217, 188, 197)  
}
```

If you want to add a text shadow in that color use the text-shadow property, you can generate a text shadow directly with our [CSS Text Shadow Generator](#).

Here you see how black text with a 4 pixel rgb(217, 188, 197) colored shadow looks like.

```
.shadow{ text-shadow: 4px 4px 2px rgb(217, 188, 197) }
```

Border

The CSS property to change the border of an element to HunterLab 73.9928, 7.2388, 3.3937 is called "border".

The border property can be set on classes, ids or directly on the HTML element.

This example shows the color as border, it can be applied via the CSS property "border" or "border-color".

```
.border, #border, table{ border:4px solid rgb(217, 188, 197) }
```


If only the border color should be changed use the property `border-color`.

```
.border{ border-color:rgb(217, 188, 197) }
```

If you want to add a box shadow in that color use:

Here you see how a box with a 4 pixel `rgb(217, 188, 197)` colored shadow looks like.

```
.boxshadow{ -moz-box-shadow:4px 4px 4px  
4px rgb(217, 188, 197); -webkit-box-  
shadow:4px 4px 4px 4px rgb(217, 188, 197);  
box-shadow:4px 4px 4px 4px rgb(217, 188,  
197) }
```

Background

The CSS property to change the background color of an element to HunterLab 73.9928, 7.2388, 3.3937 is called "background". The background property can be set on classes, ids or directly on the HTML element.

```
.background, #background, body{  
background: rgb(217, 188, 197) }
```

If only the background color should be changed can be used:

```
.background{ background-color: rgb(217,  
188, 197) }
```

This example shows the color as background, it is applied via the CSS property "background".

To optimize and compress your CSS code, you can use our [online CSS compressor and optimizer](#) based on csstidy. If you want to create a linear or radial gradient as background or border, check our [CSS Gradient Generator](#).

Hey! You found this booklet interesting? Support Converting Colors with the new Membership Option!

The pro membership hides all ads, plus gives you double the colors in the color bucket, and more awesome pro features!

[Learn more, Memberships starting at \\$2.50/m!](#)

**Follow me
on Twitter!**

@ConvertingColor