

Converting Colors

HunterLab(74.1137, 3.3931,
15.7822)

Have a look what the booklet for
HunterLab(74.1137, 3.3931,
15.7822) contains.

HunterLab(74.2049, 3.3911, 15.7926)	3
<i>Conversions</i>	4
<i>Details</i>	6
<i>Harmonies</i>	12
<i>Previews</i>	24
<i>Color Blindness Simulation</i>	28
<i>CSS Examples</i>	31

Color

**HunterLab(74.2049, 3.3911,
15.7926)**

Conversions

Conversions Part 1

Format	Color
Hex	DDBEA9
RGB	221, 190, 169
RGB Percent	87%, 75%, 66%
CMY	0.1333, 0.2549, 0.3372
CMYK	0.00, 0.14, 0.24, 0.13
HSL	24°, 43%, 76%
HSV	24°, 24%, 87%
XYZ	55.3937, 55.0637, 45.2449
YIQ	196.8750, 25.2170, 0.0410

Conversions

Conversions Part 2

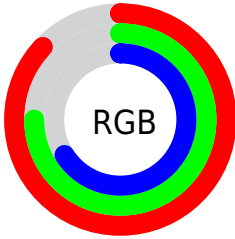
Format	Color
RYB	221, 204, 169
Decimal	14532265
CIELab	79.08, 7.83, 14.68
CIELCh	79, 16.640, 61.940
Yxy	55.0662, 0.3558, 0.3537
Android (android.graphics.Color)	4292722345 (0xFFDDBEA9)
YUV	196.8750, -13.7424, 21.1576
Hunter-Lab	74.2049, 3.3911, 15.7926

Details

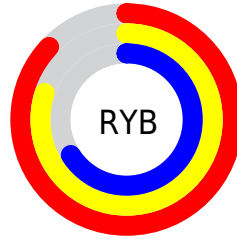
The HunterLab color $74.2049, 3.3911, 15.7926$ is a light color, and the websafe version is hex `FFCCCC`. A complement of this color would be $74.1367, -9.1919, -9.1859$, and the grayscale version is $74.7195, -3.9868, 4.0596$.

A 20% lighter version of the original color is $96.2047, -5.7300, 15.7191$, and $52.1297, 3.5318, 13.0426$ is the 20% darker color. If you saturate the color by 10%, you get $69.8955, 7.3315, 19.8167$, and if you desaturate by 10%, it is $78.6985, -0.1995, 11.3117$.

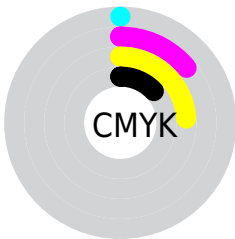
Distribution



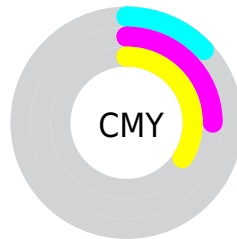
- Red (87%)
- Green (75%)
- Blue (66%)



- Red (87%)
- Yellow (80%)
- Blue (66%)



- Cyan (0%)
- Magenta (14%)
- Yellow (24%)
- Black (13%)



- Cyan (13%)
- Magenta (25%)
- Yellow (34%)

Brightness & Saturation Gradients

These gradients show how the HunterLab color 74.2049, 3.3911, 15.7926 changes by changing the brightness by 10 percent. The first figure shows a shift by +10% for each color and the second figure -10%.

Similar to the brightness gradients but the following saturation gradients show a change of the HunterLab color 74.2049, 3.3911, 15.7926 by changing the saturation by 10% instead.

■ 74.2049, 3.3911,
15.7926

■ 74.2049, 3.3911,
15.7926

201.5348, -0.6009,
28.1168

■ 62.8130, 3.6153,
14.4181

■ 98.8119, 2.7842,
18.5188

■ 52.0708, 3.7852,
13.0251

111.9674, 2.4140,
19.8771

■ 42.0221, 3.8915,
11.6047

125.6599, 2.0024,
21.2368

■ 32.7187, 3.9257,
10.1420

139.8690, 1.5519,
22.5999

■ 24.2259, 3.8758,
8.6135

154.5767, 1.0647,
23.9682

■ 16.6299, 3.7240,
6.9797

169.7666, 0.5424,

■ 10.0528, 3.4425,

25.3431

6.6368

185.4238, -0.0133,
26.7257

0.0000, INF, NaN

0.0000, NaN, NaN

■ 74.2049, 3.3911,
15.7926

■ 74.2049, 3.3911,
15.7926

■ 69.8955, 7.3315,
19.8167

■ 78.6985, -0.1995,
11.3117

■ 65.7852, 11.6516,
23.3140

■ 83.3539, -3.4596,
6.4291

■ 61.8981, 16.3620,
26.2116

■ 88.1575, -6.4202,
1.1957

■ 58.2587, 21.4602,
28.4316

■ 93.0123, -9.5711,
-3.1608

■ 54.8937, 26.9188,

■ 97.0115, -15.8937,

29.9004

1.6788

■ 51.8302, 32.6741,
30.5633

■ 49.0933, 38.6125,
30.4123

■ 47.4993, 42.4433,
30.0119

Harmonies

Analogous

The Analogous color harmony consists of three colors that are next to each other on the color wheel.



74.2066, 9.5033, 11.3497



74.2049, 3.3911, 15.7926



74.2066, -4.4820, 17.1896

Triad

The Triadic color harmony groups three colors that are evenly spaced from another and form a triangle on the color wheel.



74.2066, 3.3886, 15.7937



74.2066, -18.6761, 3.5437



74.2066, 4.3248, -9.4368

Complementary

The Complementary color scheme is a pair of colors which are on the opposite of each other on the color wheel.



74.2049, 3.3911, 15.7926



74.1367, -9.1919, -9.1859

Split Complementary

Split-complementary colors differ from the complementary color scheme. The scheme consists of three colors, the original color and two neighbors of the complement color.



74.2066, -3.4435, -12.0692



74.2049, 3.3911, 15.7926



74.2066, -16.5335, -4.1000

Square

The Square scheme is like the rectangle color scheme, but the four colors are evenly spaced on the color wheel.



74.2066, 3.3886, 15.7937



74.2066, -17.0169, 10.5788



74.2066, -11.0400, -10.0213



74.2066, 10.0597, -3.1555

Rectangle

The Rectangle color scheme consists of four colors that form a rectangle on the color wheel.



74.2049, 3.3911, 15.7926



74.2066, -9.6067, 16.3365



74.2066, -11.0400, -10.0213



74.2066, 1.8537, -10.8059

Sweetspot

The Sweet Spot groups the original color and five complimentary colors.



74.2066, 3.3886, 15.7937



96.0737, -2.7582, 9.6360



69.2302, 19.2540, -3.9068



44.2934, -1.1694, 4.6212

0.0000, NaN, NaN



46.2646, -2.4686, 2.5136

Same Dimension

The Same Dimension uses a secret algorithm to generate beautiful new colors.



74.2066, 3.3886, 15.7937



84.8596, 6.1087, 20.8670



82.0040, -9.6703, 23.2215



37.2970, -0.7286, 4.3296



36.4904, 31.6032, 23.0385



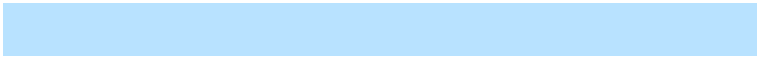
10.1433, 5.9603, 6.3546

Inverse Universe

The Inverse Universe completely reimagines the original color for something new.



74.1367, -9.1919, -9.1859



84.7587, -11.5210, -14.1533



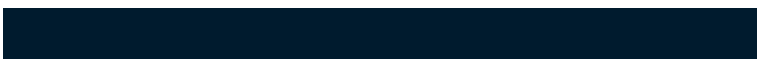
66.3367, 3.8907, -20.1958



37.2845, -3.1021, -0.3797



35.7834, -0.4286, -43.8009



9.9846, -1.5370, -9.1619

Previews

White Background



This preview shows how the HunterLab color 74.2049, 3.3911, 15.7926 looks on a white background.

Color Contrast Check

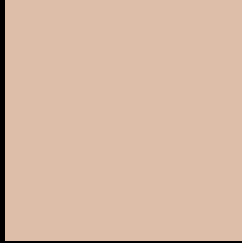
Large Text (above 18pt) WCAG AA × Fail

Any Text WCAG AA × Fail

Large Text (above 18pt) WCAG AAA × Fail

Any Text WCAG AAA × Fail

Black Background



This preview shows how the HunterLab color 74.2049, 3.3911, 15.7926 looks on a black background.

Color Contrast Check

Large Text (above 18pt) WCAG AA ✓ Pass

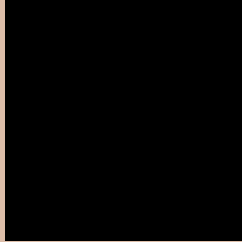
Any Text WCAG AA ✓ Pass

Large Text (above 18pt) WCAG AAA ✓ Pass

Any Text WCAG AAA ✓ Pass

If you want to check with other color combinations, try the [Color Contrast Checker](#).

HunterLab 74.2049, 3.3911, 15.7926 Background



This preview shows how black text looks on a background with the HunterLab color 74.2049, 3.3911, 15.7926.



This preview shows how white text looks on a background with the HunterLab color 74.2049, 3.3911,

15.7926.

Color Blindness Simulation

Color vision deficiency is a very complex topic, and I could not describe the different causes any better than Wikipedia does, so if you want to learn more, you should check out their [article about color blindness](#).

Dichromacy



Original Color

74.2049, 3.3911, 15.7926

Protanopia

74.1538, -4.2640, 14.4122

Deuteranopia

74.2341, 4.9846, 15.8503



Tritanopia

74.3609, 11.5805, 2.4548

Trichromacy



Original Color

74.2049, 3.3911, 15.7926

Protanomaly

74.1142, -1.3666, 14.8231

Deuteranomaly

74.1267, 4.6237, 15.7344

Tritanomaly

74.2038, 8.9334, 7.4125

Monochromacy



Original Color

74.2049, 3.3911, 15.7926

Achromatopsia

74.7222, -3.9870, 4.0598

Achromatomaly

74.3594, -1.1859, 8.3131

CSS Examples

Text

The CSS property to change the color of the text to HunterLab 74.2049, 3.3911, 15.7926 is called "color". The color property can be set on classes, ids or directly on the HTML element.

This example shows how text in the color `rgb(221, 190, 169)` looks like.

```
.text, #text, p{  
    color:rgb(221, 190, 169)  
}
```

If you want to add a text shadow in that color use the text-shadow property, you can generate a text shadow directly with our [CSS Text Shadow Generator](#).

Here you see how black text with a 4 pixel rgb(221, 190, 169) colored shadow looks like.

```
.shadow{ text-shadow: 4px 4px 2px rgb(221, 190, 169) }
```

Border

The CSS property to change the border of an element to HunterLab 74.2049, 3.3911, 15.7926 is called "border". The border property can be set on classes, ids or directly on the HTML element.

This example shows the color as border, it can be applied via the CSS property "border" or "border-color".

```
.border, #border, table{ border:4px solid rgb(221, 190, 169) }
```


If only the border color should be changed use the property `border-color`.

```
.border{ border-color:rgb(221, 190, 169) }
```

If you want to add a box shadow in that color use:

Here you see how a box with a 4 pixel `rgb(221, 190, 169)` colored shadow looks like.

```
.boxshadow{ -moz-box-shadow:4px 4px 4px 4px rgb(221, 190, 169); -webkit-box-shadow:4px 4px 4px 4px rgb(221, 190, 169); box-shadow:4px 4px 4px 4px rgb(221, 190, 169) }
```

Background

The CSS property to change the background color of an element to HunterLab 74.2049, 3.3911, 15.7926 is called "background". The background property can be set on classes, ids or directly on the HTML element.

```
.background, #background, body{  
background: rgb(221, 190, 169) }
```

If only the background color should be changed can be used:

```
.background{ background-color: rgb(221,  
190, 169) }
```

This example shows the color as background, it is applied via the CSS property "background".

To optimize and compress your CSS code, you can use our [online CSS compressor and optimizer](#) based on csstidy. If you want to create a linear or radial gradient as background or border, check our [CSS Gradient Generator](#).

Hey! You found this booklet interesting? Support Converting Colors with the new Membership Option!

The pro membership hides all ads, plus gives you double the colors in the color bucket, and more awesome pro features!

[Learn more, Memberships starting at \\$2.50/m!](#)

**Follow me
on Twitter!**

@ConvertingColor