

Converting Colors

HunterLab(74.1137, 9.6921,
-1.2165)

Have a look what the booklet for
HunterLab(74.1137, 9.6921, -1.2165)
contains.

HunterLab(74.1290, 9.8068, -1.3651)	3
<i>Conversions</i>	4
<i>Details</i>	6
<i>Harmonies</i>	12
<i>Previews</i>	24
<i>Color Blindness Simulation</i>	28
<i>CSS Examples</i>	31

Color

**HunterLab(74.1290, 9.8068,
-1.3651)**

Conversions

Conversions Part 1

Format	Color
Hex	DABBCF
RGB	218, 187, 207
RGB Percent	85%, 73%, 81%
CMY	0.1451, 0.2666, 0.1882
CMYK	0.00, 0.14, 0.05, 0.15
HSL	321°, 30%, 79%
HSV	321°, 14%, 85%
XYZ	57.9463, 54.9511, 66.5841
YIQ	198.5490, 12.0560, 12.7920

Conversions

Conversions Part 2

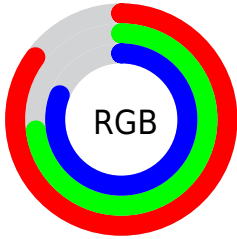
Format	Color
R_{YB}	218, 187, 207
Decimal	14334927
CIE Lab	79.01, 14.43, -5.94
CIE LCh	79, 15.602, 337.613
Yxy	54.9535, 0.3229, 0.3062
Android (android.graphics.Color)	4292525007 (0xFFDABBCF)
YUV	198.5490, 4.1663, 17.0585
Hunter-Lab	74.1290, 9.8068, -1.3651

Details

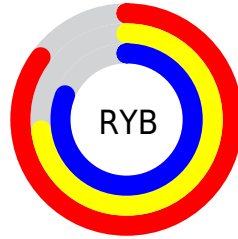
The HunterLab color $74.1290, 9.8068, -1.3651$ is a light color, and the websafe version is hex `FFCCCC`. A complement of this color would be $80.4899, -17.2000, 9.9398$, and the grayscale version is $75.3615, -4.0211, 4.0945$.

A 20% lighter version of the original color is $96.2191, 1.0662, 1.0114$, and $52.0928, 9.5073, -2.0349$ is the 20% darker color. If you saturate the color by 10%, you get $67.8423, 20.0550, -5.2073$, and if you desaturate by 10%, it is $80.8108, -0.2757, 2.7511$.

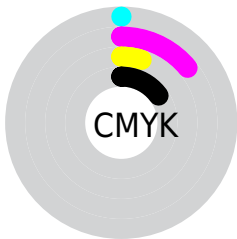
Distribution



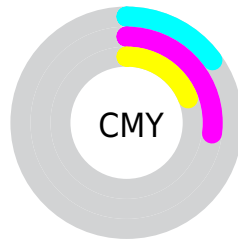
- Red (85%)
- Green (73%)
- Blue (81%)



- Red (85%)
- Yellow (73%)
- Blue (81%)



- Cyan (0%)
- Magenta (14%)
- Yellow (5%)
- Black (15%)



- Cyan (15%)
- Magenta (27%)
- Yellow (19%)

Brightness & Saturation Gradients

These gradients show how the HunterLab color 74.1290, 9.8068, -1.3651 changes by changing the brightness by 10 percent. The first figure shows a shift by +10% for each color and the second figure -10%.

Similar to the brightness gradients but the following saturation gradients show a change of the HunterLab color 74.1290, 9.8068, -1.3651 by changing the saturation by 10% instead.

■ 74.1290, 9.8068,
-1.3651

■ 74.1290, 9.8068,
-1.3651

201.4288, 8.1249,
3.5611

■ 62.7411, 9.7220,
-1.7132

■ 98.7283, 9.7790,
-0.5290

■ 52.0033, 9.5663,
-2.0124

111.8803, 9.6811,
-0.0498

■ 41.9593, 9.3284,
-2.2562

125.5693, 9.5321,
0.4674

■ 32.6609, 8.9964,
-2.4383

139.7752, 9.3355,
1.0206

■ 24.1736, 8.5538,
-2.5501

154.4797, 9.0941,
1.6080

■ 16.5838, 7.9781,
-2.5800

169.6665, 8.8104,

■ 10.0138, 7.2376,

2.2281

-2.5120

185.3207, 8.4867,
2.8796

0.0000, INF, -NF

0.0000, NaN, NaN

■ 74.1290, 9.8068,
-1.3651

■ 74.1290, 9.8068,
-1.3651

■ 67.8423, 20.0550,
-5.2073

■ 80.8108, -0.2757,
2.7511

■ 62.0139, 30.3850,
-8.6727

■ 87.8272, -10.1535,
7.0631

■ 56.7272, 40.6106,
-11.6107

■ 95.1348, -19.8277,
11.5217

■ 52.0762, 50.4096,
-13.8254

■ 96.2266, -19.8138,
9.1330

■ 48.1603, 59.2904,

■ 96.4676, -18.4583,

-15.0852

5.6891

■ 45.0692, 66.6174,
-15.1665

■ 96.7183, -17.0524,
2.1169

■ 42.8576, 71.7494,
-13.9354

■ 96.7707, -16.7590,
1.3714

■ 41.5105, 74.3007,
-11.4461

■ 41.0096, 74.8932,
-9.6467

Harmonies

Analogous

The Analogous color harmony consists of three colors that are next to each other on the color wheel.



74.1306, 5.0188, -7.6340



74.1290, 9.8068, -1.3651



74.1306, 10.8325, 5.8238

Triad

The Triadic color harmony groups three colors that are evenly spaced from another and form a triangle on the color wheel.



74.1306, 9.8047, -1.3637



74.1306, -5.8540, 16.3489



74.1306, -15.0055, -4.8045

Complementary

The Complementary color scheme is a pair of colors which are on the opposite of each other on the color wheel.



74.1290, 9.8068, -1.3651



80.4899, -17.2000, 9.9398

Split Complementary

Split-complementary colors differ from the complementary color scheme. The scheme consists of three colors, the original color and two neighbors of the complement color.



74.1306, -17.6753, 2.2007



74.1290, 9.8068, -1.3651



74.1306, -12.5297, 14.0699

Square

The Square scheme is like the rectangle color scheme, but the four colors are evenly spaced on the color wheel.



74.1306, 9.8047, -1.3637



74.1306, 1.5949, 15.5973



74.1306, -16.7872, 9.0562



74.1306, -9.3548, -9.7538

Rectangle

The Rectangle color scheme consists of four colors that form a rectangle on the color wheel.



74.1290, 9.8068, -1.3651



74.1306, 9.2120, 10.0970



74.1306, -16.7872, 9.0562



74.1306, -16.2709, -2.5863

Sweetspot

The Sweet Spot groups the original color and five complimentary colors.



74.1306, 9.8047, -1.3637



96.6607, -0.5473, 3.3779



72.5195, 5.2110, -9.4526



44.4324, 0.1655, 1.3858

0.0000, NaN, NaN



46.2646, -2.4686, 2.5136

Same Dimension

The Same Dimension uses a secret algorithm to generate beautiful new colors.



74.1306, 9.8047, -1.3637



86.2790, 15.2812, -3.0130



73.6471, 7.2372, 5.5216



36.3212, 2.3312, 0.2704



31.7754, 58.0883, -7.9322



8.1871, 15.1414, -3.3978

Inverse Universe

The Inverse Universe completely reimagines the original color for something new.



74.1306, 9.8047, -1.3637



86.2790, 15.2812, -3.0130



80.9511, -14.6072, 3.3481



36.3212, 2.3312, 0.2704



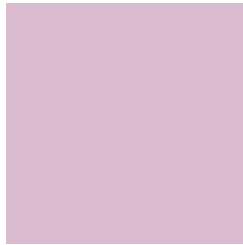
31.7754, 58.0883, -7.9322



8.1871, 15.1414, -3.3978

Previews

White Background



This preview shows how the HunterLab color 74.1290, 9.8068, -1.3651 looks on a white background.

Color Contrast Check

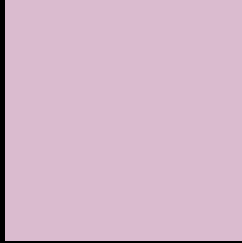
Large Text (above 18pt) WCAG AA × Fail

Any Text WCAG AA × Fail

Large Text (above 18pt) WCAG AAA × Fail

Any Text WCAG AAA × Fail

Black Background



This preview shows how the HunterLab color 74.1290, 9.8068, -1.3651 looks on a black background.

Color Contrast Check

Large Text (above 18pt) WCAG AA ✓ Pass

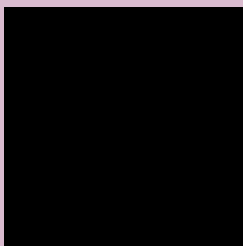
Any Text WCAG AA ✓ Pass

Large Text (above 18pt) WCAG AAA ✓ Pass

Any Text WCAG AAA ✓ Pass

If you want to check with other color combinations, try the [Color Contrast Checker](#).

HunterLab 74.1290, 9.8068, -1.3651 Background



This preview shows how black text looks on a background with the HunterLab color 74.1290, 9.8068, -1.3651.



This preview shows how white text looks on a background with the HunterLab color 74.1290, 9.8068, -1.3651.

-1.3651.

Color Blindness Simulation

Color vision deficiency is a very complex topic, and I could not describe the different causes any better than Wikipedia does, so if you want to learn more, you should check out their [article about color blindness](#).

Dichromacy



Original Color

74.1290, 9.8068, -1.3651

Protanopia

74.4216, -0.9482, -3.7812

Deuteranopia

74.1517, 5.3578, -0.9036



Tritanopia

74.1501, 8.0760, 1.1533

Trichromacy



Original Color

74.1290, 9.8068, -1.3651

Protanomaly

74.1950, 2.7464, -2.9573

Deuteranomaly

74.1603, 6.8828, -0.8661

Tritanomaly

74.2144, 8.4176, 0.2393

Monochromacy



Original Color

74.1290, 9.8068, -1.3651

Achromatopsia

75.5728, -4.0324, 4.1060

Achromatomaly

75.1108, 0.7588, 2.1886

CSS Examples

Text

The CSS property to change the color of the text to HunterLab 74.1290, 9.8068, -1.3651 is called "color". The color property can be set on classes, ids or directly on the HTML element.

This example shows how text in the color `rgb(218, 187, 207)` looks like.

```
.text, #text, p{  
    color:rgb(218, 187, 207)  
}
```

If you want to add a text shadow in that color use the text-shadow property, you can generate a text shadow directly with our [CSS Text Shadow Generator](#).

Here you see how black text with a 4 pixel rgb(218, 187, 207) colored shadow looks like.

```
.shadow{ text-shadow: 4px 4px 2px rgb(218, 187, 207) }
```

Border

The CSS property to change the border of an element to HunterLab 74.1290, 9.8068, -1.3651 is called "border". The border property can be set on classes, ids or directly on the HTML element.

This example shows the color as border, it can be applied via the CSS property "border" or "border-color".

```
.border, #border, table{ border:4px solid rgb(218, 187, 207) }
```


If only the border color should be changed use the property `border-color`.

```
.border{ border-color:rgb(218, 187, 207) }
```

If you want to add a box shadow in that color use:

Here you see how a box with a 4 pixel `rgb(218, 187, 207)` colored shadow looks like.

```
.boxshadow{ -moz-box-shadow:4px 4px 4px  
4px rgb(218, 187, 207); -webkit-box-  
shadow:4px 4px 4px 4px rgb(218, 187, 207);  
box-shadow:4px 4px 4px 4px rgb(218, 187,  
207) }
```

Background

The CSS property to change the background color of an element to HunterLab 74.1290, 9.8068, -1.3651 is called "background". The background property can be set on classes, ids or directly on the HTML element.

```
.background, #background, body{  
background: rgb(218, 187, 207) }
```

If only the background color should be changed can be used:

```
.background{ background-color: rgb(218,  
187, 207) }
```

This example shows the color as background, it is applied via the CSS property "background".

To optimize and compress your CSS code, you can use our [online CSS compressor and optimizer](#) based on csstidy. If you want to create a linear or radial gradient as background or border, check our [CSS Gradient Generator](#).

Hey! You found this booklet interesting? Support Converting Colors with the new Membership Option!

The pro membership hides all ads, plus gives you double the colors in the color bucket, and more awesome pro features!

[Learn more, Memberships starting at \\$2.50/m!](#)

**Follow me
on Twitter!**

@ConvertingColor