

Converting Colors

HunterLab(74.1144, -0.0098,
5.3836)

Have a look what the booklet for
HunterLab(74.1144, -0.0098, 5.3836)
contains.

HunterLab(74.1413, -0.0459, 5.3387)	3
<i>Conversions</i>	4
<i>Details</i>	6
<i>Harmonies</i>	12
<i>Previews</i>	24
<i>Color Blindness Simulation</i>	28
<i>CSS Examples</i>	31

Color

**HunterLab(74.1413, -0.0459,
5.3387)**

Conversions

Conversions Part 1

Format	Color
Hex	CDC1C1
RGB	205, 193, 193
RGB Percent	80%, 76%, 76%
CMY	0.1961, 0.2431, 0.2431
CMYK	0.00, 0.06, 0.06, 0.20
HSL	0°, 11%, 78%
HSV	0°, 6%, 80%
XYZ	53.8724, 54.9693, 58.2229
YIQ	196.5880, 7.1520, 2.5440

Conversions

Conversions Part 2

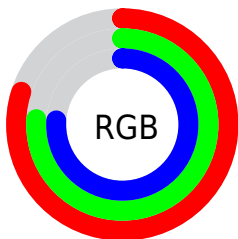
Format	Color
R_{YB}	205, 193, 193
Decimal	13484481
CIE Lab	79.02, 4.20, 1.50
CIE LCh	79, 4.463, 19.661
Yxy	54.9717, 0.3225, 0.3290
Android (android.graphics.Color)	4291674561 (0xFFCDC1C1)
YUV	196.5880, -1.7689, 7.3773
Hunter-Lab	74.1413, -0.0459, 5.3387

Details

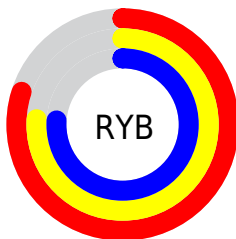
The HunterLab color $74.1413, -0.0459, 5.3387$ is a light color, and the websafe version is hex `CCCCCC`. A complement of this color would be $77.0759, -7.8720, 2.9259$, and the grayscale version is $74.5537, -3.9780, 4.0506$.

A 20% lighter version of the original color is $97.9035, -3.2033, 5.9965$, and $52.1813, 0.6129, 3.9737$ is the 20% darker color. If you saturate the color by 10%, you get $67.5848, 7.2375, 7.3107$, and if you desaturate by 10%, it is $81.0240, -7.0288, 3.4941$.

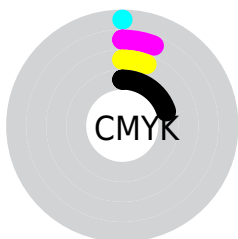
Distribution



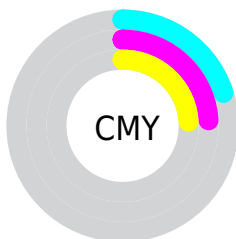
- Red (80%)
- Green (76%)
- Blue (76%)



- Red (80%)
- Yellow (76%)
- Blue (76%)



- Cyan (0%)
- Magenta (6%)
- Yellow (6%)
- Black (20%)



- Cyan (20%)
- Magenta (24%)
- Yellow (24%)

Brightness & Saturation Gradients

These gradients show how the HunterLab color 74.1413, -0.0459, 5.3387 changes by changing the brightness by 10 percent. The first figure shows a shift by +10% for each color and the second figure -10%.

Similar to the brightness gradients but the following saturation gradients show a change of the HunterLab color 74.1413, -0.0459, 5.3387 by changing the saturation by 10% instead.

■ 74.1413, -0.0459,
5.3387

■ 74.1413, -0.0459,
5.3387

201.4460, -5.3275,
12.7931

■ 62.7528, 0.3534,
4.6480

■ 98.7418, -0.9773,
6.8119

■ 52.0142, 0.7076,
3.9872

111.8944, -1.4999,
7.5899

■ 41.9695, 1.0099,
3.3587

125.5840, -2.0582,
8.3946

■ 32.6703, 1.2543,
2.7641

139.7904, -2.6503,
9.2253

■ 24.1821, 1.4321,
2.2048

154.4954, -3.2746,
10.0812

■ 16.5913, 1.5309,
1.6824

169.6827, -3.9297,

■ 10.0201, 1.5305,

10.9616

1.1976

185.3374, -4.6143,
11.8657

0.0000, INF, NaN

0.0000, NaN, NaN

■ 74.1413, -0.0459,
5.3387

■ 74.1413, -0.0459,
5.3387

■ 67.5848, 7.2375,
7.3107

■ 81.0240, -7.0288,
3.4941

■ 61.4070, 14.8446,
9.4164

■ 88.1825, -13.7391,
1.7589

■ 55.6821, 22.7527,
11.6552

■ 95.5827, -20.2165,
0.1190

■ 50.4996, 30.8644,
14.0009

■ 95.7702, -20.3787,
0.0860

■ 45.9661, 38.9527,

16.3847

■ 42.1982, 46.6049,
18.6767

■ 39.3038, 53.2198,
20.6832

■ 37.3487, 58.1340,
22.1865

■ 36.3093, 60.9172,
23.0415

Harmonies

Analogous

The Analogous color harmony consists of three colors that are next to each other on the color wheel.



74.1429, 0.1288, 3.3303



74.1413, -0.0459, 5.3387



74.1429, -1.2795, 6.9559

Triad

The Triadic color harmony groups three colors that are evenly spaced from another and form a triangle on the color wheel.



74.1429, -0.0478, 5.3399



74.1429, -7.0684, 6.5235



74.1429, -4.6966, 0.0835

Complementary

The Complementary color scheme is a pair of colors which are on the opposite of each other on the color wheel.



74.1413, -0.0459, 5.3387



77.0759, -7.8720, 2.9259

Split Complementary

Split-complementary colors differ from the complementary color scheme. The scheme consists of three colors, the original color and two neighbors of the complement color.



74.1429, -6.6031, 0.9918



74.1413, -0.0459, 5.3387



74.1429, -7.9622, 4.7344

Square

The Square scheme is like the rectangle color scheme, but the four colors are evenly spaced on the color wheel.



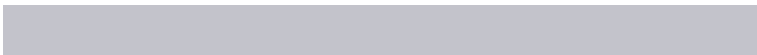
74.1429, -0.0478, 5.3399



74.1429, -5.3385, 7.6258



74.1429, -7.7928, 2.7076



74.1429, -2.5714, 0.2568

Rectangle

The Rectangle color scheme consists of four colors that form a rectangle on the color wheel.



74.1413, -0.0459, 5.3387



74.1429, -2.5254, 7.6107



74.1429, -7.7928, 2.7076



74.1429, -5.3839, 0.2735

Sweetspot

The Sweet Spot groups the original color and five complimentary colors.



74.1429, -0.0478, 5.3399



98.2170, -3.5253, 5.9120



74.5169, 1.9836, -0.0041



45.4804, -1.6726, 2.7241

0.0000, NaN, NaN



46.2646, -2.4686, 2.5136

Same Dimension

The Same Dimension uses a secret algorithm to generate beautiful new colors.



74.1429, -0.0478, 5.3399



93.8304, 1.0690, 7.1369



75.9454, -3.1012, 7.3547



34.0697, 0.5319, 2.6396



28.4272, 48.6729, 18.3688



6.4582, 11.0501, 4.1730

Inverse Universe

The Inverse Universe completely reimagines the original color for something new.



77.0759, -7.8720, 2.9259



98.3702, -11.0437, 3.3997



75.2282, -4.8577, 0.7490



35.8229, -4.1461, 1.1963



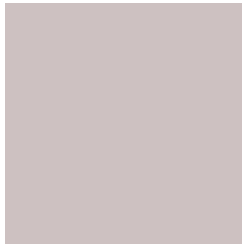
54.6882, -28.9825, -5.7906



12.4222, -6.5837, -1.3142

Previews

White Background



This preview shows how the HunterLab color 74.1413, -0.0459, 5.3387 looks on a white background.

Color Contrast Check

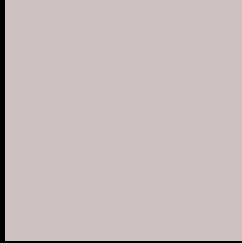
Large Text (above 18pt) WCAG AA × Fail

Any Text WCAG AA × Fail

Large Text (above 18pt) WCAG AAA × Fail

Any Text WCAG AAA × Fail

Black Background



This preview shows how the HunterLab color 74.1413, -0.0459, 5.3387 looks on a black background.

Color Contrast Check

Large Text (above 18pt) WCAG AA ✓ Pass

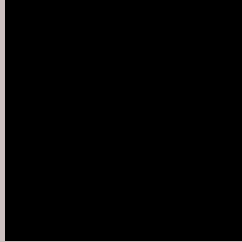
Any Text WCAG AA ✓ Pass

Large Text (above 18pt) WCAG AAA ✓ Pass

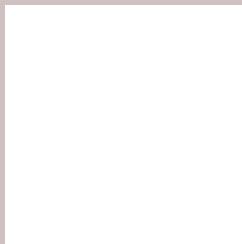
Any Text WCAG AAA ✓ Pass

If you want to check with other color combinations, try the [Color Contrast Checker](#).

HunterLab 74.1413, -0.0459, 5.3387 Background



This preview shows how black text looks on a background with the HunterLab color 74.1413, -0.0459, 5.3387.

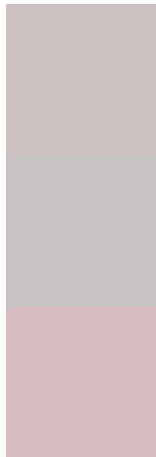


This preview shows how white text looks on a background with the HunterLab color 74.1413, -0.0459,

Color Blindness Simulation

Color vision deficiency is a very complex topic, and I could not describe the different causes any better than Wikipedia does, so if you want to learn more, you should check out their [article about color blindness](#).

Dichromacy



Original Color

74.1413, -0.0459, 5.3387

Protanopia

74.2074, -2.8425, 4.8975

Deuteranopia

73.9847, 5.5383, 4.7843



Tritanopia

74.1507, 3.8477, -0.9313

Trichromacy



Original Color

74.1413, -0.0459, 5.3387

Protanomaly

74.0919, -1.6935, 4.7830

Deuteranomaly

73.8721, 3.6588, 4.6196

Tritanomaly

74.1877, 2.1339, 1.5896

Monochromacy



Original Color

74.1413, -0.0459, 5.3387

Achromatopsia

74.7222, -3.9870, 4.0598

Achromatomaly

74.6624, -2.6981, 4.4875

CSS Examples

Text

The CSS property to change the color of the text to HunterLab 74.1413, -0.0459, 5.3387 is called "color". The color property can be set on classes, ids or directly on the HTML element.

This example shows how text in the color `rgb(205, 193, 193)` looks like.

```
.text, #text, p{  
    color:rgb(205, 193, 193)  
}
```

If you want to add a text shadow in that color use the text-shadow property, you can generate a text shadow directly with our [CSS Text Shadow Generator](#).

Here you see how black text with a 4 pixel rgb(205, 193, 193) colored shadow looks like.

```
.shadow{ text-shadow: 4px 4px 2px rgb(205, 193, 193) }
```

Border

The CSS property to change the border of an element to HunterLab 74.1413, -0.0459, 5.3387 is called "border". The border property can be set on classes, ids or directly on the HTML element.

This example shows the color as border, it can be applied via the CSS property "border" or "border-color".

```
.border, #border, table{ border:4px solid rgb(205, 193, 193) }
```


If only the border color should be changed use the property `border-color`.

```
.border{ border-color:rgb(205, 193, 193) }
```

If you want to add a box shadow in that color use:

Here you see how a box with a 4 pixel `rgb(205, 193, 193)` colored shadow looks like.

```
.boxshadow{ -moz-box-shadow:4px 4px 4px  
4px rgb(205, 193, 193); -webkit-box-  
shadow:4px 4px 4px 4px rgb(205, 193, 193);  
box-shadow:4px 4px 4px 4px rgb(205, 193,  
193) }
```

Background

The CSS property to change the background color of an element to HunterLab 74.1413, -0.0459, 5.3387 is called "background". The background property can be set on classes, ids or directly on the HTML element.

```
.background, #background, body{  
background: rgb(205, 193, 193) }
```

If only the background color should be changed can be used:

```
.background{ background-color: rgb(205,  
193, 193) }
```

This example shows the color as background, it is applied via the CSS property "background".

To optimize and compress your CSS code, you can use our [online CSS compressor and optimizer](#) based on csstidy. If you want to create a linear or radial gradient as background or border, check our [CSS Gradient Generator](#).

Hey! You found this booklet interesting? Support Converting Colors with the new Membership Option!

The pro membership hides all ads, plus gives you double the colors in the color bucket, and more awesome pro features!

[Learn more, Memberships starting at \\$2.50/m!](#)

**Follow me
on Twitter!**

@ConvertingColor