

Converting Colors

HunterLab(74.1293, 3.9589,
6.6801)

Have a look what the booklet for
HunterLab(74.1293, 3.9589, 6.6801)
contains.

HunterLab(74.0545, 4.0346, 6.7000)	3
<i>Conversions</i>	4
<i>Details</i>	6
<i>Harmonies</i>	12
<i>Previews</i>	24
<i>Color Blindness Simulation</i>	28
<i>CSS Examples</i>	31

Color

**HunterLab(74.0545, 4.0346,
6.7000)**

Conversions

Conversions Part 1

Format	Color
Hex	D6BEBE
RGB	214, 190, 190
RGB Percent	84%, 75%, 75%
CMY	0.1608, 0.2549, 0.2549
CMYK	0.00, 0.11, 0.11, 0.16
HSL	0°, 23%, 79%
HSV	0°, 11%, 84%
XYZ	55.4392, 54.8407, 56.3785
YIQ	197.1760, 14.3040, 5.0880

Conversions

Conversions Part 2

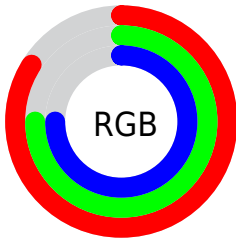
Format	Color
R _Y B	214, 190, 190
Decimal	14073534
CIE Lab	78.95, 8.50, 3.11
CIE LCh	79, 9.046, 20.084
Yxy	54.8431, 0.3327, 0.3291
Android (android.graphics.Color)	4292263614 (0xFFD6BEBE)
YUV	197.1760, -3.5378, 14.7546
Hunter-Lab	74.0545, 4.0346, 6.7000

Details

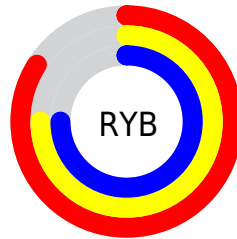
The HunterLab color $74.0545, 4.0346, 6.7000$ is a light color, and the websafe version is hex `CCCCCC`. A complement of this color would be $79.9338, -11.6616, 1.8621$, and the grayscale version is $74.8086, -3.9916, 4.0645$.

A 20% lighter version of the original color is $96.8635, -2.1290, 6.2814$, and $52.0273, 4.1907, 5.1617$ is the 20% darker color. If you saturate the color by 10%, you get $67.3619, 11.8833, 8.8504$, and if you desaturate by 10%, it is $81.1221, -3.4840, 4.6907$.

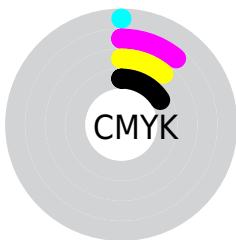
Distribution



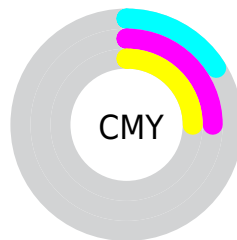
- Red (84%)
- Green (75%)
- Blue (75%)



- Red (84%)
- Yellow (75%)
- Blue (75%)



- Cyan (0%)
- Magenta (11%)
- Yellow (11%)
- Black (16%)




- Cyan (16%)
- Magenta (25%)
- Yellow (25%)

Brightness & Saturation Gradients

These gradients show how the HunterLab color 74.0545, 4.0346, 6.7000 changes by changing the brightness by 10 percent. The first figure shows a shift by +10% for each color and the second figure -10%.

Similar to the brightness gradients but the following saturation gradients show a change of the HunterLab color 74.0545, 4.0346, 6.7000 by changing the saturation by 10% instead.


 74.0545, 4.0346,
6.7000

 74.0545, 4.0346,
6.7000

201.3249, 0.2839,
14.7200

 62.6707, 4.2266,
5.9313


 98.6464, 3.4887,
8.3173

 51.9371, 4.3620,
5.1873


111.7948, 3.1469,
9.1624

 41.8977, 4.4318,
4.4696


125.4805, 2.7628,
10.0316

 32.6043, 4.4269,
3.7779

139.6831, 2.3388,
10.9242

 24.1223, 4.3346,
3.1115

154.3845, 1.8771,
11.8398

 16.5386, 4.1365,
2.4677

169.5683, 1.3797,

 9.9756, 3.8033,

12.7780

1.8611

185.2196, 0.8481,
13.7382

0.0000, INF, NaN

0.0000, NaN, NaN

■ 74.0545, 4.0346,
6.7000

■ 74.0545, 4.0346,
6.7000

■ 67.3619, 11.8833,
8.8504

■ 81.1221, -3.4840,
4.6907

■ 61.1085, 20.0689,
11.1434

■ 88.5054, -10.6946,
2.8055

■ 55.3822, 28.5292,
13.5662

■ 96.1627, -17.6381,
1.0296

■ 50.2881, 37.0941,
16.0693

■ 96.4553, -17.8957,
0.9677

■ 45.9462, 45.4209,

18.5465

■ 42.4785, 52.9561,
20.8209

■ 39.9798, 58.9987,
22.6645

■ 38.4742, 62.9357,
23.8737

■ 37.8113, 64.7482,
24.4327

Harmonies

Analogous

The Analogous color harmony consists of three colors that are next to each other on the color wheel.



74.0561, 4.4310, 2.6534



74.0545, 4.0346, 6.7000



74.0561, 1.4664, 9.8555

Triad

The Triadic color harmony groups three colors that are evenly spaced from another and form a triangle on the color wheel.



74.0561, 4.0325, 6.7012



74.0561, -10.2374, 8.9381



74.0561, -5.3846, -4.2082

Complementary

The Complementary color scheme is a pair of colors which are on the opposite of each other on the color wheel.



74.0545, 4.0346, 6.7000



79.9338, -11.6616, 1.8621

Split Complementary

Split-complementary colors differ from the complementary color scheme. The scheme consists of three colors, the original color and two neighbors of the complement color.



74.0561, -9.2256, -2.3085



74.0545, 4.0346, 6.7000



74.0561, -11.9845, 5.3828

Square

The Square scheme is like the rectangle color scheme, but the four colors are evenly spaced on the color wheel.



74.0561, 4.0325, 6.7012



74.0561, -6.7946, 11.0946



74.0561, -11.6184, 1.2577



74.0561, -1.0728, -3.8049

Rectangle

The Rectangle color scheme consists of four colors that form a rectangle on the color wheel.



74.0545, 4.0346, 6.7000



74.0561, -1.0962, 11.1017



74.0561, -11.6184, 1.2577



74.0561, -6.7719, -3.8138

Sweetspot

The Sweet Spot groups the original color and five complimentary colors.



74.0561, 4.0325, 6.7012



97.3312, -2.6137, 6.1534



74.8190, 8.1164, -4.1693



44.7027, -0.8699, 2.9370

0.0000, NaN, NaN



46.2646, -2.4686, 2.5136

Same Dimension

The Same Dimension uses a secret algorithm to generate beautiful new colors.



74.0561, 4.0325, 6.7012



88.7082, 6.7188, 8.6604



77.6245, -2.1320, 10.5850



35.2436, 1.2453, 2.9632



29.3967, 50.3378, 18.9954



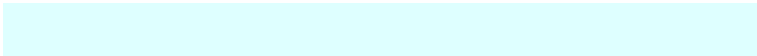
7.2203, 12.3599, 4.6655

Inverse Universe

The Inverse Universe completely reimagines the original color for something new.



79.9338, -11.6616, 1.8621



97.0787, -15.6440, 1.7646



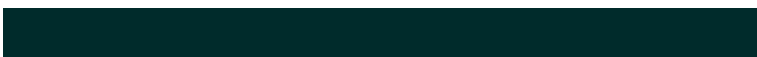
76.1866, -5.6507, -2.6626



37.5600, -4.9371, 1.0570



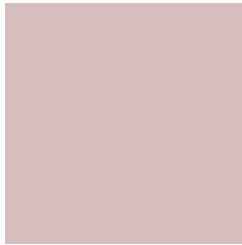
56.5631, -29.9813, -5.9780



13.8918, -7.3636, -1.4676

Previews

White Background



This preview shows how the HunterLab color 74.0545, 4.0346, 6.7000 looks on a white background.

Color Contrast Check

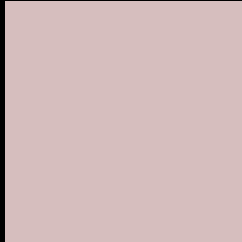
Large Text (above 18pt) WCAG AA × Fail

Any Text WCAG AA × Fail

Large Text (above 18pt) WCAG AAA × Fail

Any Text WCAG AAA × Fail

Black Background



This preview shows how the HunterLab color 74.0545, 4.0346, 6.7000 looks on a black background.

Color Contrast Check

Large Text (above 18pt) WCAG AA ✓ Pass

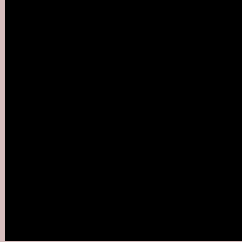
Any Text WCAG AA ✓ Pass

Large Text (above 18pt) WCAG AAA ✓ Pass

Any Text WCAG AAA ✓ Pass

If you want to check with other color combinations, try the [Color Contrast Checker](#).

HunterLab 74.0545, 4.0346, 6.7000 Background



This preview shows how black text looks on a background with the HunterLab color 74.0545, 4.0346, 6.7000.



This preview shows how white text looks on a background with the HunterLab color 74.0545, 4.0346,

6.7000.

Color Blindness Simulation

Color vision deficiency is a very complex topic, and I could not describe the different causes any better than Wikipedia does, so if you want to learn more, you should check out their [article about color blindness](#).

Dichromacy



Original Color

74.0545, 4.0346, 6.7000

Protanopia

74.2697, -2.6872, 5.4413

Deuteranopia

73.9674, 5.2408, 6.6216



Tritanopia

74.0791, 7.9046, 0.5653

Trichromacy



Original Color

74.0545, 4.0346, 6.7000

Protanomaly

74.1113, -0.2087, 5.7674

Deuteranomaly

73.8647, 4.8960, 6.4979

Tritanomaly

74.1077, 6.1959, 3.0296

Monochromacy



Original Color

74.0545, 4.0346, 6.7000

Achromatopsia

74.7222, -3.9870, 4.0598

Achromatomaly

74.2800, -1.0460, 5.0136

CSS Examples

Text

The CSS property to change the color of the text to HunterLab 74.0545, 4.0346, 6.7000 is called "color". The color property can be set on classes, ids or directly on the HTML element.

This example shows how text in the color `rgb(214, 190, 190)` looks like.

```
.text, #text, p{  
  color:rgb(214, 190, 190)  
}
```

If you want to add a text shadow in that color use the text-shadow property, you can generate a text shadow directly with our [CSS Text Shadow Generator](#).

Here you see how black text with a 4 pixel rgb(214, 190, 190) colored shadow looks like.

```
.shadow{ text-shadow: 4px 4px 2px rgb(214, 190, 190) }
```

Border

The CSS property to change the border of an element to HunterLab 74.0545, 4.0346, 6.7000 is called "border".

The border property can be set on classes, ids or directly on the HTML element.

This example shows the color as border, it can be applied via the CSS property "border" or "border-color".

```
.border, #border, table{ border:4px solid rgb(214, 190, 190) }
```


If only the border color should be changed use the property `border-color`.

```
.border{ border-color:rgb(214, 190, 190) }
```

If you want to add a box shadow in that color use:

Here you see how a box with a 4 pixel `rgb(214, 190, 190)` colored shadow looks like.

```
.boxshadow{ -moz-box-shadow:4px 4px 4px  
4px rgb(214, 190, 190); -webkit-box-  
shadow:4px 4px 4px 4px rgb(214, 190, 190);  
box-shadow:4px 4px 4px 4px rgb(214, 190,  
190) }
```

Background

The CSS property to change the background color of an element to HunterLab 74.0545, 4.0346, 6.7000 is called "background". The background property can be set on classes, ids or directly on the HTML element.

```
.background, #background, body{  
background: rgb(214, 190, 190) }
```

If only the background color should be changed can be used:

```
.background{ background-color: rgb(214,  
190, 190) }
```

This example shows the color as background, it is applied via the CSS property "background".

To optimize and compress your CSS code, you can use our [online CSS compressor and optimizer](#) based on csstidy. If you want to create a linear or radial gradient as background or border, check our [CSS Gradient Generator](#).

Hey! You found this booklet interesting? Support Converting Colors with the new Membership Option!

The pro membership hides all ads, plus gives you double the colors in the color bucket, and more awesome pro features!

[Learn more, Memberships starting at \\$2.50/m!](#)

**Follow me
on Twitter!**

@ConvertingColor