

Converting Colors

HunterLab(74.1439, 3.4703,
13.4385)

Have a look what the booklet for
HunterLab(74.1439, 3.4703,
13.4385) contains.

HunterLab(74.1499, 3.5163, 13.3228)	3
<i>Conversions</i>	4
<i>Details</i>	6
<i>Harmonies</i>	12
<i>Previews</i>	24
<i>Color Blindness Simulation</i>	28
<i>CSS Examples</i>	31

Color

**HunterLab(74.1499, 3.5163,
13.3228)**

Conversions

Conversions Part 1

Format	Color
Hex	DBBEAF
RGB	219, 190, 175
RGB Percent	86%, 75%, 69%
CMY	0.1412, 0.2549, 0.3137
CMYK	0.00, 0.13, 0.20, 0.14
HSL	20°, 38%, 77%
HSV	20°, 20%, 86%
XYZ	55.3647, 54.9821, 48.2520
YIQ	196.9610, 22.0990, 1.4830

Conversions

Conversions Part 2

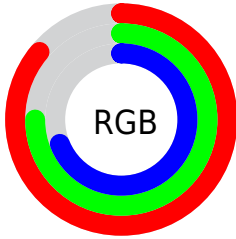
Format	Color
R _Y B	219, 198, 175
Decimal	14401199
CIE Lab	79.03, 7.96, 11.37
CIE LCh	79, 13.875, 55.008
Yxy	54.9846, 0.3491, 0.3467
Android (android.graphics.Color)	4292591279 (0xFFDDBBEAF)
YUV	196.9610, -10.8268, 19.3282
Hunter-Lab	74.1499, 3.5163, 13.3228

Details

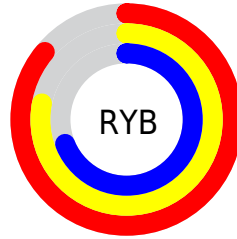
The HunterLab color $74.1499, 3.5163, 13.3228$ is a light color, and the websafe version is hex `FFCCCC`. A complement of this color would be $75.7712, -9.9630, -5.9254$, and the grayscale version is $74.7449, -3.9882, 4.0610$.

A 20% lighter version of the original color is $96.4059, -4.6272, 12.8288$, and $52.1669, 3.9362, 10.9164$ is the 20% darker color. If you saturate the color by 10%, you get $69.4601, 7.9986, 17.1790$, and if you desaturate by 10%, it is $79.0448, -0.6287, 9.1186$.

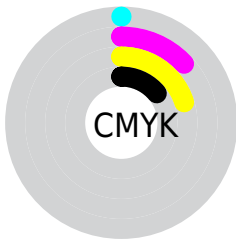
Distribution



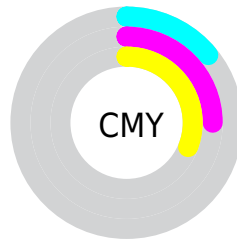
- Red (86%)
- Green (75%)
- Blue (69%)



- Red (86%)
- Yellow (78%)
- Blue (69%)



- Cyan (0%)
- Magenta (13%)
- Yellow (20%)
- Black (14%)



- Cyan (14%)
- Magenta (25%)
- Yellow (31%)

Brightness & Saturation Gradients

These gradients show how the HunterLab color 74.1499, 3.5163, 13.3228 changes by changing the brightness by 10 percent. The first figure shows a shift by +10% for each color and the second figure -10%.


Similar to the brightness gradients but the following saturation gradients show a change of the HunterLab color 74.1499, 3.5163, 13.3228 by changing the saturation by 10% instead.


 74.1499, 3.5163,
13.3228

 74.1499, 3.5163,
13.3228

201.4580, -0.4281,
24.3783

 62.7609, 3.7342,
12.1285


 98.7514, 2.9215,
15.7203

 52.0219, 3.8972,
10.9292


111.9043, 2.5569,
16.9270

 41.9766, 3.9963,
9.7192


125.5943, 2.1507,
18.1419

 32.6769, 4.0228,
8.4882

139.8011, 1.7055,
19.3665

 24.1880, 3.9644,
7.2198

154.5064, 1.2232,
20.6018

 16.5965, 3.8033,
5.8854

169.6941, 0.7058,

 10.0246, 3.5114,

21.8484

5.2780

185.3491, 0.1549,
23.1071

0.0000, INF, NaN

0.0000, NaN, NaN

■ 74.1499, 3.5163,
13.3228

■ 74.1499, 3.5163,
13.3228

■ 69.4601, 7.9986,
17.1790

■ 79.0448, -0.6287,
9.1186

■ 64.9950, 12.8486,
20.6212

■ 84.1184, -4.4574,
4.6150

■ 60.7848, 18.0755,
23.5764

■ 89.3542, -8.0022,
-0.1446

■ 56.8618, 23.6711,
25.9606

■ 94.4728, -12.7576,
-1.3843

■ 53.2617, 29.5949,

■ 96.8505, -16.4720,

27.6855

1.4734

■ 50.0219, 35.7589,
28.6713

■ 47.1790, 42.0124,
28.8719

■ 44.7761, 48.0456,
28.4320

Harmonies

Analogous

The Analogous color harmony consists of three colors that are next to each other on the color wheel.



74.1516, 7.9843, 8.9955



74.1499, 3.5163, 13.3228



74.1516, -2.8449, 15.1580

Triad

The Triadic color harmony groups three colors that are evenly spaced from another and form a triangle on the color wheel.



74.1516, 3.5139, 13.3239



74.1516, -16.2712, 5.0866



74.1516, 1.5217, -7.8521

Complementary

The Complementary color scheme is a pair of colors which are on the opposite of each other on the color wheel.



74.1499, 3.5163, 13.3228



75.7712, -9.9630, -5.9254

Split Complementary

Split-complementary colors differ from the complementary color scheme. The scheme consists of three colors, the original color and two neighbors of the complement color.



74.1516, -5.0696, -9.1295



74.1499, 3.5163, 13.3228



74.1516, -15.1940, -1.2911

Square

The Square scheme is like the rectangle color scheme, but the four colors are evenly spaced on the color wheel.



74.1516, 3.5139, 13.3239



74.1516, -14.1457, 10.6770



74.1516, -11.1501, -6.6337



74.1516, 6.8060, -3.2818

Rectangle

The Rectangle color scheme consists of four colors that form a rectangle on the color wheel.



74.1499, 3.5163, 13.3228



74.1516, -7.2421, 14.8480



74.1516, -11.1501, -6.6337



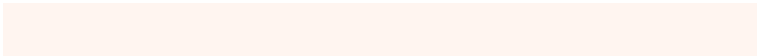
74.1516, -0.6208, -8.6970

Sweetspot

The Sweet Spot groups the original color and five complimentary colors.



74.1516, 3.5139, 13.3239



96.3267, -2.6274, 8.7123



70.7788, 16.0622, -4.1354



44.3822, -1.0755, 4.1926

0.0000, NaN, NaN



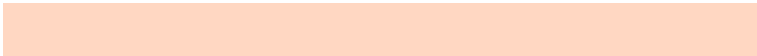
46.2646, -2.4686, 2.5136

Same Dimension

The Same Dimension uses a secret algorithm to generate beautiful new colors.



74.1516, 3.5139, 13.3239



85.7781, 6.3166, 17.7698



80.6698, -7.4971, 19.7680



37.1130, -0.4159, 4.1293



34.7437, 36.2628, 22.0437



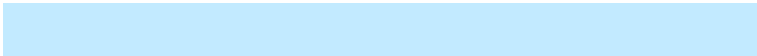
9.6896, 7.0357, 6.0939

Inverse Universe

The Inverse Universe completely reimagines the original color for something new.



75.7712, -9.9630, -5.9254



88.0811, -12.8783, -9.6335



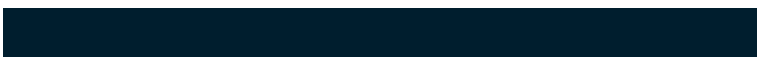
69.1533, 0.9764, -14.8304



37.4738, -3.4102, -0.1508



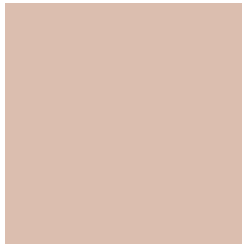
38.8950, -5.5172, -36.7053



10.6659, -2.5699, -7.7837

Previews

White Background



This preview shows how the HunterLab color 74.1499, 3.5163, 13.3228 looks on a white background.

Color Contrast Check

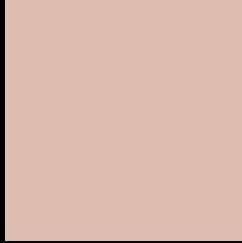
Large Text (above 18pt) WCAG AA × Fail

Any Text WCAG AA × Fail

Large Text (above 18pt) WCAG AAA × Fail

Any Text WCAG AAA × Fail

Black Background



This preview shows how the HunterLab color 74.1499, 3.5163, 13.3228 looks on a black background.

Color Contrast Check

Large Text (above 18pt) WCAG AA ✓ Pass

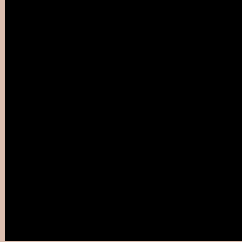
Any Text WCAG AA ✓ Pass

Large Text (above 18pt) WCAG AAA ✓ Pass

Any Text WCAG AAA ✓ Pass

If you want to check with other color combinations, try the [Color Contrast Checker](#).

HunterLab 74.1499, 3.5163, 13.3228 Background



This preview shows how black text looks on a background with the HunterLab color 74.1499, 3.5163, 13.3228.



This preview shows how white text looks on a background with the HunterLab color 74.1499, 3.5163,

Color Blindness Simulation

Color vision deficiency is a very complex topic, and I could not describe the different causes any better than Wikipedia does, so if you want to learn more, you should check out their [article about color blindness](#).

Dichromacy



Original Color

74.1499, 3.5163, 13.3228

Protanopia

74.2172, -3.7257, 12.0190

Deuteranopia

74.1754, 5.0982, 13.3774



Tritanopia

74.0705, 10.6927, 1.5974

Trichromacy



Original Color

74.1499, 3.5163, 13.3228

Protanomaly

74.0740, -1.1890, 12.3300

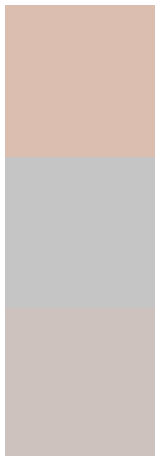
Deuteranomaly

74.0692, 4.7415, 13.2592

Tritanomaly

73.9720, 8.3441, 5.7562

Monochromacy



Original Color

74.1499, 3.5163, 13.3228

Achromatopsia

74.7222, -3.9870, 4.0598

Achromatomaly

74.3215, -1.2004, 7.3685

CSS Examples

Text

The CSS property to change the color of the text to HunterLab 74.1499, 3.5163, 13.3228 is called "color". The color property can be set on classes, ids or directly on the HTML element.

This example shows how text in the color `rgb(219, 190, 175)` looks like.

```
.text, #text, p{  
    color:rgb(219, 190, 175)  
}
```

If you want to add a text shadow in that color use the text-shadow property, you can generate a text shadow directly with our [CSS Text Shadow Generator](#).

Here you see how black text with a 4 pixel rgb(219, 190, 175) colored shadow looks like.

```
.shadow{ text-shadow: 4px 4px 2px rgb(219, 190, 175) }
```

Border

The CSS property to change the border of an element to HunterLab 74.1499, 3.5163, 13.3228 is called "border". The border property can be set on classes, ids or directly on the HTML element.

This example shows the color as border, it can be applied via the CSS property "border" or "border-color".

```
.border, #border, table{ border:4px solid rgb(219, 190, 175) }
```


If only the border color should be changed use the property `border-color`.

```
.border{ border-color:rgb(219, 190, 175) }
```

If you want to add a box shadow in that color use:

Here you see how a box with a 4 pixel `rgb(219, 190, 175)` colored shadow looks like.

```
.boxshadow{ -moz-box-shadow:4px 4px 4px  
4px rgb(219, 190, 175); -webkit-box-  
shadow:4px 4px 4px 4px rgb(219, 190, 175);  
box-shadow:4px 4px 4px 4px rgb(219, 190,  
175) }
```

Background

The CSS property to change the background color of an element to HunterLab 74.1499, 3.5163, 13.3228 is called "background". The background property can be set on classes, ids or directly on the HTML element.

```
.background, #background, body{  
background: rgb(219, 190, 175) }
```

If only the background color should be changed can be used:

```
.background{ background-color: rgb(219,  
190, 175) }
```

This example shows the color as background, it is applied via the CSS property "background".

To optimize and compress your CSS code, you can use our [online CSS compressor and optimizer](#) based on csstidy. If you want to create a linear or radial gradient as background or border, check our [CSS Gradient Generator](#).

Hey! You found this booklet interesting? Support Converting Colors with the new Membership Option!

The pro membership hides all ads, plus gives you double the colors in the color bucket, and more awesome pro features!

[Learn more, Memberships starting at \\$2.50/m!](#)

**Follow me
on Twitter!**

@ConvertingColor