

Converting Colors

HunterLab(74.1803, 10.0404,
8.2953)

Have a look what the booklet for
HunterLab(74.1803, 10.0404,
8.2953) contains.

HunterLab(74.1866, 10.2251, 8.3191)	3
<i>Conversions</i>	4
<i>Details</i>	6
<i>Harmonies</i>	12
<i>Previews</i>	24
<i>Color Blindness Simulation</i>	28
<i>CSS Examples</i>	31

Color

**HunterLab(74.1866, 10.2251,
8.3191)**

Conversions

Conversions Part 1

Format	Color
Hex	E3BABB
RGB	227, 186, 187
RGB Percent	89%, 73%, 73%
CMY	0.1098, 0.2706, 0.2667
CMYK	0.00, 0.18, 0.18, 0.11
HSL	359°, 42%, 81%
HSV	359°, 18%, 89%
XYZ	58.2070, 55.0365, 54.5689
YIQ	198.3730, 24.1150, 9.0030

Conversions

Conversions Part 2

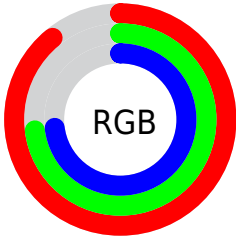
Format	Color
R _Y B	227, 186, 187
Decimal	14924475
CIE Lab	79.06, 14.85, 5.04
CIE LCh	79, 15.680, 18.742
Yxy	55.0390, 0.3469, 0.3280
Android (android.graphics.Color)	4293114555 (0xFFE3BABB)
YUV	198.3730, -5.6069, 25.1059
Hunter-Lab	74.1866, 10.2251, 8.3191

Details

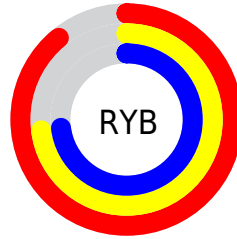
The HunterLab color **74.1866, 10.2251, 8.3191** is a light color, and the websafe version is hex **FFCCCC**. A complement of this color would be **84.1840, -17.0297, 0.8985**, and the grayscale version is **75.3232, -4.0191, 4.0925**.

A 20% lighter version of the original color is **95.5172, -0.5169, 6.2143**, and **52.1097, 9.8085, 6.6194** is the 20% darker color. If you saturate the color by 10%, you get **67.3388, 18.9590, 10.5453**, and if you desaturate by 10%, it is **81.4852, 1.8351, 6.2811**.

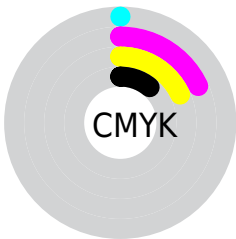
Distribution



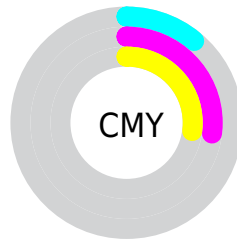
- Red (89%)
- Green (73%)
- Blue (73%)



- Red (89%)
- Yellow (73%)
- Blue (73%)



- Cyan (0%)
- Magenta (18%)
- Yellow (18%)
- Black (11%)



- Cyan (11%)
- Magenta (27%)
- Yellow (27%)

Brightness & Saturation Gradients

These gradients show how the HunterLab color 74.1866, 10.2251, 8.3191 changes by changing the brightness by 10 percent. The first figure shows a shift by +10% for each color and the second figure -10%.

Similar to the brightness gradients but the following saturation gradients show a change of the HunterLab color 74.1866, 10.2251, 8.3191 by changing the saturation by 10% instead.

74.1866, 10.2251,
8.3191

74.1866, 10.2251,
8.3191

201.5092, 8.6864,
17.0340

62.7957, 10.1209,
7.4540

98.7918, 10.2326,
10.1140

52.0545, 9.9453,
6.6071

111.9464, 10.1516,
11.0417

42.0070, 9.6865,
5.7786

125.6380, 10.0190,
11.9900

32.7048, 9.3323,
4.9662

139.8464, 9.8382,
12.9587

24.2133, 8.8663,
4.1658

154.5533, 9.6121,
13.9477

16.6188, 8.2658,
3.3695

169.7425, 9.3433,

10.0434, 7.4995,

14.9567

2.6600

185.3990, 9.0341,
15.9855

0.0000, INF, NaN

0.0000, NaN, NaN

■ 74.1866, 10.2251,
8.3191

■ 74.1866, 10.2251,
8.3191

■ 67.3388, 18.9590,
10.5453

■ 81.4852, 1.8351,
6.2811

■ 61.0236, 28.0003,
12.9584

■ 89.1608, -6.2131,
4.4113

■ 55.3490, 37.2019,
15.5328

■ 97.1607, -13.9551,
2.6900

■ 50.4400, 46.2535,
18.1894

■ 97.5043, -14.1295,
2.3057

■ 46.4292, 54.6249,

20.7742

■ 43.4315, 61.5928,
23.0578

■ 41.5015, 66.4393,
24.7880

■ 40.5563, 68.9009,
25.7849

■ 40.4266, 69.2616,
25.8910

Harmonies

Analogous

The Analogous color harmony consists of three colors that are next to each other on the color wheel.



74.1883, 10.7474, 1.3043



74.1866, 10.2251, 8.3191



74.1883, 5.8087, 13.6460

Triad

The Triadic color harmony groups three colors that are evenly spaced from another and form a triangle on the color wheel.



74.1883, 10.2226, 8.3203



74.1883, -14.5153, 12.5429



74.1883, -6.7624, -10.7470

Complementary

The Complementary color scheme is a pair of colors which are on the opposite of each other on the color wheel.



74.1866, 10.2251, 8.3191



84.1840, -17.0297, 0.8985

Split Complementary

Split-complementary colors differ from the complementary color scheme. The scheme consists of three colors, the original color and two neighbors of the complement color.



74.1883, -13.2528, -7.0557



74.1866, 10.2251, 8.3191



74.1883, -17.6087, 6.6720

Square

The Square scheme is like the rectangle color scheme, but the four colors are evenly spaced on the color wheel.



74.1883, 10.2226, 8.3203



74.1883, -8.5483, 15.9112



74.1883, -17.1559, -0.5153



74.1883, 0.7375, -10.1931

Rectangle

The Rectangle color scheme consists of four colors that form a rectangle on the color wheel.



74.1866, 10.2251, 8.3191



74.1883, 1.3495, 15.7402



74.1883, -17.1559, -0.5153



74.1883, -9.1291, -9.9478

Sweetspot

The Sweet Spot groups the original color and five complimentary colors.



74.1883, 10.2226, 8.3203



95.5812, -0.7256, 6.5014



75.3497, 16.6112, -10.4631



43.9367, -0.0324, 3.0790

0.0000, NaN, NaN



46.2646, -2.4686, 2.5136

Same Dimension

The Same Dimension uses a secret algorithm to generate beautiful new colors.



74.1883, 10.2226, 8.3203



81.3900, 15.6856, 10.5033



79.7523, 0.1097, 14.6073



37.9126, 1.4093, 3.0902



30.8767, 52.9081, 19.7133



8.4055, 14.4269, 5.1811

Inverse Universe

The Inverse Universe completely reimagines the original color for something new.



74.1883, 10.2226, 8.3203



81.3900, 15.6856, 10.5033



78.1243, -7.3045, -7.1413



37.9126, 1.4093, 3.0902



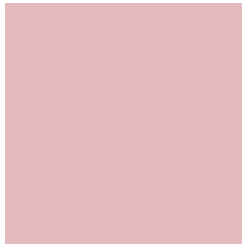
30.8767, 52.9081, 19.7133



8.4055, 14.4269, 5.1811

Previews

White Background



This preview shows how the HunterLab color 74.1866, 10.2251, 8.3191 looks on a white background.

Color Contrast Check

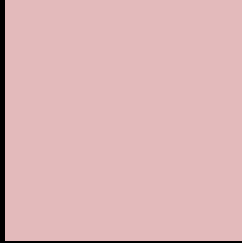
Large Text (above 18pt) WCAG AA × Fail

Any Text WCAG AA × Fail

Large Text (above 18pt) WCAG AAA × Fail

Any Text WCAG AAA × Fail

Black Background



This preview shows how the HunterLab color 74.1866, 10.2251, 8.3191 looks on a black background.

Color Contrast Check

Large Text (above 18pt) WCAG AA ✓ Pass

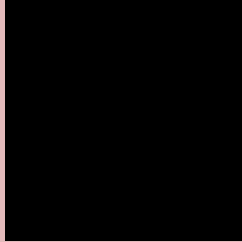
Any Text WCAG AA ✓ Pass

Large Text (above 18pt) WCAG AAA ✓ Pass

Any Text WCAG AAA ✓ Pass

If you want to check with other color combinations, try the [Color Contrast Checker](#).

HunterLab 74.1866, 10.2251, 8.3191 Background



This preview shows how black text looks on a background with the HunterLab color 74.1866, 10.2251, 8.3191.



This preview shows how white text looks on a background with the HunterLab color 74.1866, 10.2251,

8.3191.

Color Blindness Simulation

Color vision deficiency is a very complex topic, and I could not describe the different causes any better than Wikipedia does, so if you want to learn more, you should check out their [article about color blindness](#).

Dichromacy



Original Color

74.1866, 10.2251, 8.3191

Protanopia

74.2397, -2.8509, 5.8693

Deuteranopia

74.1623, 5.6609, 8.6590



Tritanopia

74.0935, 13.5444, 2.6558

Trichromacy



Original Color

74.1866, 10.2251, 8.3191

Protanomaly

74.2419, 1.6455, 6.8721

Deuteranomaly

74.1898, 7.2381, 8.7173

Tritanomaly

74.2509, 12.3643, 4.7428

Monochromacy



Original Color

74.1866, 10.2251, 8.3191

Achromatopsia

75.1473, -4.0097, 4.0829

Achromatomaly

74.8558, 0.9268, 5.7163

CSS Examples

Text

The CSS property to change the color of the text to HunterLab 74.1866, 10.2251, 8.3191 is called "color". The color property can be set on classes, ids or directly on the HTML element.

This example shows how text in the color `rgb(227, 186, 187)` looks like.

```
.text, #text, p{  
    color:rgb(227, 186, 187)  
}
```

If you want to add a text shadow in that color use the text-shadow property, you can generate a text shadow directly with our [CSS Text Shadow Generator](#).

Here you see how black text with a 4 pixel rgb(227, 186, 187) colored shadow looks like.

```
.shadow{ text-shadow: 4px 4px 2px rgb(227, 186, 187) }
```

Border

The CSS property to change the border of an element to HunterLab 74.1866, 10.2251, 8.3191 is called "border". The border property can be set on classes, ids or directly on the HTML element.

This example shows the color as border, it can be applied via the CSS property "border" or "border-color".

```
.border, #border, table{ border:4px solid rgb(227, 186, 187) }
```


If only the border color should be changed use the property `border-color`.

```
.border{ border-color:rgb(227, 186, 187) }
```

If you want to add a box shadow in that color use:

Here you see how a box with a 4 pixel `rgb(227, 186, 187)` colored shadow looks like.

```
.boxshadow{ -moz-box-shadow:4px 4px 4px  
4px rgb(227, 186, 187); -webkit-box-  
shadow:4px 4px 4px 4px rgb(227, 186, 187);  
box-shadow:4px 4px 4px 4px rgb(227, 186,  
187) }
```

Background

The CSS property to change the background color of an element to HunterLab 74.1866, 10.2251, 8.3191 is called "background". The background property can be set on classes, ids or directly on the HTML element.

```
.background, #background, body{  
background: rgb(227, 186, 187) }
```

If only the background color should be changed can be used:

```
.background{ background-color: rgb(227,  
186, 187) }
```

This example shows the color as background, it is applied via the CSS property "background".

To optimize and compress your CSS code, you can use our [online CSS compressor and optimizer](#) based on csstidy. If you want to create a linear or radial gradient as background or border, check our [CSS Gradient Generator](#).

Hey! You found this booklet interesting? Support Converting Colors with the new Membership Option!

The pro membership hides all ads, plus gives you double the colors in the color bucket, and more awesome pro features!

[Learn more, Memberships starting at \\$2.50/m!](#)

**Follow me
on Twitter!**

@ConvertingColor