

Converting Colors

HunterLab(74.1908, 9.0730,
11.0171)

Have a look what the booklet for
HunterLab(74.1908, 9.0730,
11.0171) contains.

HunterLab(74.3019, 8.8026, 11.0549)	3
<i>Conversions</i>	4
<i>Details</i>	6
<i>Harmonies</i>	12
<i>Previews</i>	24
<i>Color Blindness Simulation</i>	28
<i>CSS Examples</i>	31

Color

**HunterLab(74.3019, 8.8026,
11.0549)**

Conversions

Conversions Part 1

Format	Color
Hex	E3BBB5
RGB	227, 187, 181
RGB Percent	89%, 73%, 71%
CMY	0.1098, 0.2666, 0.2902
CMYK	0.00, 0.18, 0.20, 0.11
HSL	8°, 45%, 80%
HSV	8°, 20%, 89%
XYZ	57.7894, 55.2077, 51.3264
YIQ	198.2760, 25.7660, 6.6140

Conversions

Conversions Part 2

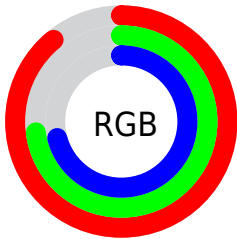
Format	Color
R _Y B	227, 188, 181
Decimal	14924725
CIE Lab	79.16, 13.41, 8.42
CIE LCh	79, 15.830, 32.128
Yxy	55.2102, 0.3517, 0.3360
Android (android.graphics.Color)	4293114805 (0xFFE3BBB5)
YUV	198.2760, -8.5171, 25.1909
Hunter-Lab	74.3019, 8.8026, 11.0549

Details

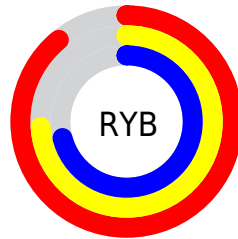
The HunterLab color $74.3019, 8.8026, 11.0549$ is a light color, and the websafe version is hex FFCCCC . A complement of this color would be $81.9030, -15.2310, -2.4071$, and the grayscale version is $75.2934, -4.0175, 4.0908$.

A 20% lighter version of the original color is $95.6429, -2.0629, 9.2309$, and $52.2175, 8.4912, 9.1367$ is the 20% darker color. If you saturate the color by 10%, you get $68.2246, 15.9885, 14.0897$, and if you desaturate by 10%, it is $80.7325, 1.9749, 7.9654$.

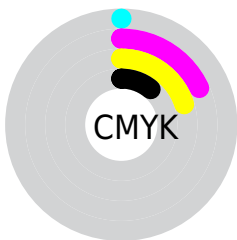
Distribution



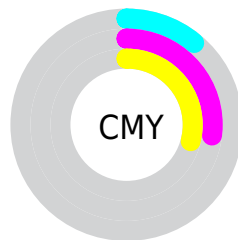
- Red (89%)
- Green (73%)
- Blue (71%)



- Red (89%)
- Yellow (74%)
- Blue (71%)



- Cyan (0%)
- Magenta (18%)
- Yellow (20%)
- Black (11%)





- Cyan (11%)
- Magenta (27%)
- Yellow (29%)

Brightness & Saturation Gradients

These gradients show how the HunterLab color 74.3019, 8.8026, 11.0549 changes by changing the brightness by 10 percent. The first figure shows a shift by +10% for each color and the second figure -10%.


Similar to the brightness gradients but the following saturation gradients show a change of the HunterLab color 74.3019, 8.8026, 11.0549 by changing the saturation by 10% instead.


 74.3019, 8.8026,
11.0549

 74.3019, 8.8026,
11.0549


201.6701, 6.7613,
21.0081

 62.9047, 8.7653,
10.0164


 98.9186, 8.6845,
13.1678

 52.1570, 8.6600,
8.9843

112.0786, 8.5443,
14.2429

 42.1024, 8.4754,
7.9555


125.7755, 8.3546,
15.3322

 32.7926, 8.1997,
6.9239

139.9888, 8.1185,
16.4364

 24.2927, 7.8174,
5.8790

154.7006, 7.8388,
17.5558

 16.6889, 7.3062,
4.8024

169.8944, 7.5181,

 10.1027, 6.6342,

18.6908

4.0446

185.5554, 7.1583,
19.8415

0.0000, INF, NaN

0.0000, NaN, NaN

■ 74.3019, 8.8026,
11.0549

■ 74.3019, 8.8026,
11.0549

■ 68.2246, 15.9885,
14.0897

■ 80.7325, 1.9749,
7.9654

■ 62.5542, 23.5354,
17.0211

■ 87.4631, -4.5097,
4.8445

■ 57.3635, 31.3838,
19.7793

■ 94.4565, -10.6880,
1.7087

■ 52.7350, 39.3890,
22.2589

■ 97.5044, -14.1295,
2.3057

■ 48.7590, 47.2792,

24.3194

■ 45.5237, 54.6335,
25.8007

■ 43.0965, 60.9166,
26.5710

■ 41.5222, 65.4760,
26.7320

Harmonies

Analogous

The Analogous color harmony consists of three colors that are next to each other on the color wheel.



74.3036, 11.1866, 4.5584



74.3019, 8.8026, 11.0549



74.3036, 2.9785, 15.3012

Triad

The Triadic color harmony groups three colors that are evenly spaced from another and form a triangle on the color wheel.



74.3036, 8.8001, 11.0561



74.3036, -16.4359, 10.2470



74.3036, -3.4258, -11.2110

Complementary

The Complementary color scheme is a pair of colors which are on the opposite of each other on the color wheel.



74.3019, 8.8026, 11.0549



81.9030, -15.2310, -2.4071

Split Complementary

Split-complementary colors differ from the complementary color scheme. The scheme consists of three colors, the original color and two neighbors of the complement color.



74.3036, -10.6696, -9.3058



74.3019, 8.8026, 11.0549



74.3036, -17.9988, 3.5270

Square

The Square scheme is like the rectangle color scheme, but the four colors are evenly spaced on the color wheel.



74.3036, 8.8001, 11.0561



74.3036, -11.5726, 14.8680



74.3036, -15.9294, -3.7248



74.3036, 3.9540, -8.7004

Rectangle

The Rectangle color scheme consists of four colors that form a rectangle on the color wheel.



74.3019, 8.8026, 11.0549



74.3036, -1.9591, 16.5255



74.3036, -15.9294, -3.7248



74.3036, -5.9570, -11.0653

Sweetspot

The Sweet Spot groups the original color and five complimentary colors.



74.3036, 8.8001, 11.0561



95.3192, -0.9182, 7.5867



73.9146, 18.7795, -9.3532



43.8665, -0.1986, 3.6182

0.0000, NaN, NaN



46.2646, -2.4686, 2.5136

Same Dimension

The Same Dimension uses a secret algorithm to generate beautiful new colors.



74.3036, 8.8001, 11.0561



82.0292, 13.1816, 13.9713



80.9004, -2.7697, 17.7630



38.3010, 0.6798, 3.6367



31.8575, 49.5169, 20.4973



9.2104, 11.7408, 5.8810

Inverse Universe

The Inverse Universe completely reimagines the original color for something new.



81.9030, -15.2310, -2.4071



92.2993, -19.3586, -4.2374



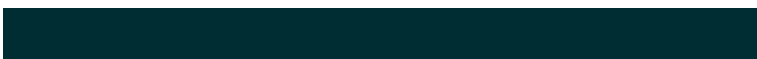
74.8658, -4.0266, -11.4924



39.9981, -4.6692, 0.6339



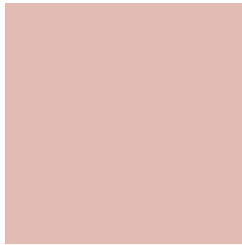
51.7147, -22.0169, -17.1107



14.3738, -6.3891, -4.1738

Previews

White Background



This preview shows how the HunterLab color 74.3019, 8.8026, 11.0549 looks on a white background.

Color Contrast Check

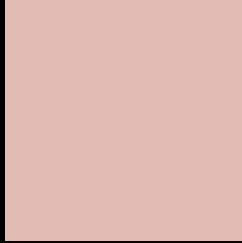
Large Text (above 18pt) WCAG AA × Fail

Any Text WCAG AA × Fail

Large Text (above 18pt) WCAG AAA × Fail

Any Text WCAG AAA × Fail

Black Background



This preview shows how the HunterLab color 74.3019, 8.8026, 11.0549 looks on a black background.

Color Contrast Check

Large Text (above 18pt) WCAG AA ✓ Pass

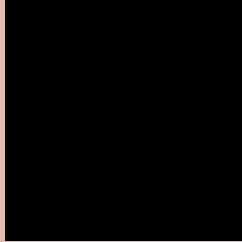
Any Text WCAG AA ✓ Pass

Large Text (above 18pt) WCAG AAA ✓ Pass

Any Text WCAG AAA ✓ Pass

If you want to check with other color combinations, try the [Color Contrast Checker](#).

HunterLab 74.3019, 8.8026, 11.0549 Background



This preview shows how black text looks on a background with the HunterLab color 74.3019, 8.8026, 11.0549.

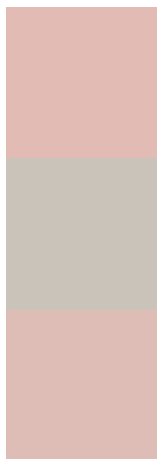


This preview shows how white text looks on a background with the HunterLab color 74.3019, 8.8026,

Color Blindness Simulation

Color vision deficiency is a very complex topic, and I could not describe the different causes any better than Wikipedia does, so if you want to learn more, you should check out their [article about color blindness](#).

Dichromacy



Original Color

74.3019, 8.8026, 11.0549

Protanopia

74.2509, -3.1631, 8.6034

Deuteranopia

74.2318, 5.6119, 10.9228



Tritanopia

74.2041, 13.9028, 2.7947

Trichromacy



Original Color

74.3019, 8.8026, 11.0549

Protanomaly

74.1680, 1.0471, 9.4695

Deuteranomaly

74.1557, 6.8428, 10.8617

Tritanomaly

74.1604, 11.8879, 6.0359

Monochromacy



Original Color

74.3019, 8.8026, 11.0549

Achromatopsia

75.1473, -4.0097, 4.0829

Achromatomaly

74.7962, 0.6038, 6.5689

CSS Examples

Text

The CSS property to change the color of the text to HunterLab 74.3019, 8.8026, 11.0549 is called "color". The color property can be set on classes, ids or directly on the HTML element.

This example shows how text in the color `rgb(227, 187, 181)` looks like.

```
.text, #text, p{  
    color:rgb(227, 187, 181)  
}
```

If you want to add a text shadow in that color use the text-shadow property, you can generate a text shadow directly with our [CSS Text Shadow Generator](#).

Here you see how black text with a 4 pixel rgb(227, 187, 181) colored shadow looks like.

```
.shadow{ text-shadow: 4px 4px 2px rgb(227, 187, 181) }
```

Border

The CSS property to change the border of an element to HunterLab 74.3019, 8.8026, 11.0549 is called "border". The border property can be set on classes, ids or directly on the HTML element.

This example shows the color as border, it can be applied via the CSS property "border" or "border-color".

```
.border, #border, table{ border:4px solid rgb(227, 187, 181) }
```


If only the border color should be changed use the property border-color.

```
.border{ border-color:rgb(227, 187, 181) }
```

If you want to add a box shadow in that color use:

Here you see how a box with a 4 pixel rgb(227, 187, 181) colored shadow looks like.

```
.boxshadow{ -moz-box-shadow:4px 4px 4px  
4px rgb(227, 187, 181); -webkit-box-  
shadow:4px 4px 4px 4px rgb(227, 187, 181);  
box-shadow:4px 4px 4px 4px rgb(227, 187,  
181) }
```

Background

The CSS property to change the background color of an element to HunterLab 74.3019, 8.8026, 11.0549 is called "background". The background property can be set on classes, ids or directly on the HTML element.

```
.background, #background, body{  
background: rgb(227, 187, 181) }
```

If only the background color should be changed can be used:

```
.background{ background-color: rgb(227,  
187, 181) }
```

This example shows the color as background, it is applied via the CSS property "background".

To optimize and compress your CSS code, you can use our [online CSS compressor and optimizer](#) based on csstidy. If you want to create a linear or radial gradient as background or border, check our [CSS Gradient Generator](#).

Hey! You found this booklet interesting? Support Converting Colors with the new Membership Option!

The pro membership hides all ads, plus gives you double the colors in the color bucket, and more awesome pro features!

[Learn more, Memberships starting at \\$2.50/m!](#)

**Follow me
on Twitter!**

@ConvertingColor