

Converting Colors

HunterLab(74.2241, -0.7099,
7.3594)

Have a look what the booklet for
HunterLab(74.2241, -0.7099, 7.3594)
contains.

HunterLab(74.1187, -0.3608, 7.1532)	3
<i>Conversions</i>	4
<i>Details</i>	6
<i>Harmonies</i>	12
<i>Previews</i>	24
<i>Color Blindness Simulation</i>	28
<i>CSS Examples</i>	31

Color

**HunterLab(74.1187, -0.3608,
7.1532)**

Conversions

Conversions Part 1

Format	Color
Hex	CEC1BD
RGB	206, 193, 189
RGB Percent	81%, 76%, 74%
CMY	0.1922, 0.2431, 0.2588
CMYK	0.00, 0.06, 0.08, 0.19
HSL	14°, 15%, 77%
HSV	14°, 8%, 81%
XYZ	53.7088, 54.9358, 55.9170
YIQ	196.4310, 9.0320, 1.5120

Conversions

Conversions Part 2

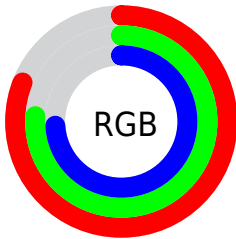
Format	Color
R _Y B	206, 194, 189
Decimal	13550013
CIE Lab	79.01, 3.87, 3.64
CIE LCh	79, 5.311, 43.271
Yxy	54.9382, 0.3264, 0.3338
Android (android.graphics.Color)	4291740093 (0xFFCEC1BD)
YUV	196.4310, -3.6635, 8.3920
Hunter-Lab	74.1187, -0.3608, 7.1532

Details

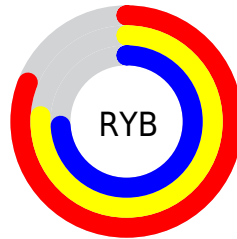
The HunterLab color $74.1187, -0.3608, 7.1532$ is a light color, and the websafe version is hex `CCCCCC`. A complement of this color would be $75.8387, -7.3909, 0.9509$, and the grayscale version is $74.4942, -3.9748, 4.0474$.

A 20% lighter version of the original color is $97.7773, -3.8926, 7.7990$, and $52.1624, 0.3261, 5.6726$ is the 20% darker color. If you saturate the color by 10%, you get $68.9273, 4.5420, 10.5172$, and if you desaturate by 10%, it is $79.5206, -4.9793, 3.6461$.

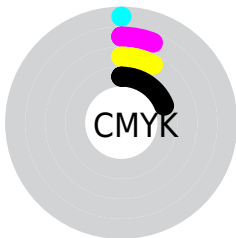
Distribution



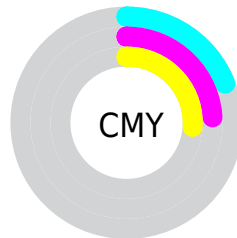
- Red (81%)
- Green (76%)
- Blue (74%)



- Red (81%)
- Yellow (76%)
- Blue (74%)



- Cyan (0%)
- Magenta (6%)
- Yellow (8%)
- Black (19%)



- Cyan (19%)
- Magenta (24%)
- Yellow (26%)

Brightness & Saturation Gradients

These gradients show how the HunterLab color 74.1187, -0.3608, 7.1532 changes by changing the brightness by 10 percent. The first figure shows a shift by +10% for each color and the second figure -10%.

Similar to the brightness gradients but the following saturation gradients show a change of the HunterLab color 74.1187, -0.3608, 7.1532 by changing the saturation by 10% instead.

■ 74.1187, -0.3608,
7.1532

■ 74.1187, -0.3608,
7.1532

201.4144, -5.7626,
15.3647

■ 62.7314, 0.0548,
6.3579

■ 98.7170, -1.3226,
8.8193

■ 51.9941, 0.4262,
5.5857

111.8684, -1.8594,
9.6872

■ 41.9508, 0.7469,
4.8376

125.5570, -2.4313,
10.5782

■ 32.6531, 1.0110,
4.1128

139.7624, -3.0366,
11.4918

■ 24.1665, 1.2103,
3.4098

154.4665, -3.6736,
12.4276

■ 16.5776, 1.3328,
2.7244

169.6529, -4.3411,

■ 10.0085, 1.3594,

13.3854

2.0829

185.3067, -5.0378,
14.3645

0.0000, NaN, NaN

0.0000, NaN, NaN

■ 74.1187, -0.3608,
7.1532

■ 74.1187, -0.3608,
7.1532

■ 68.9273, 4.5420,
10.5172

■ 79.5206, -4.9793,
3.6461

■ 63.9698, 9.7615,
13.6978

■ 85.1047, -9.3377,
0.0193

■ 59.2816, 15.3128,
16.6468

■ 90.8529, -13.4677,
-3.7059

■ 54.9028, 21.1935,
19.2990

■ 95.8446, -20.1080,
0.1821

■ 50.8799, 27.3661,

21.5714

■ 47.2652, 33.7382,
23.3652

■ 44.1140, 40.1401,
24.5758

■ 41.4788, 46.3103,
25.1189

■ 39.3966, 51.8897,
25.0288

Harmonies

Analogous

The Analogous color harmony consists of three colors that are next to each other on the color wheel.



74.1203, 0.8634, 5.0950



74.1187, -0.3608, 7.1532



74.1203, -2.5453, 8.3547

Triad

The Triadic color harmony groups three colors that are evenly spaced from another and form a triangle on the color wheel.



74.1203, -0.3628, 7.1544



74.1203, -8.5863, 5.3617



74.1203, -2.8324, -0.6397

Complementary

The Complementary color scheme is a pair of colors which are on the opposite of each other on the color wheel.



74.1187, -0.3608, 7.1532



75.8387, -7.3909, 0.9509

Split Complementary

Split-complementary colors differ from the complementary color scheme. The scheme consists of three colors, the original color and two neighbors of the complement color.



74.1203, -5.3618, -0.5624



74.1187, -0.3608, 7.1532



74.1203, -8.6608, 2.9582

Square

The Square scheme is like the rectangle color scheme, but the four colors are evenly spaced on the color wheel.



74.1203, -0.3628, 7.1544



74.1203, -7.2827, 7.3439



74.1203, -7.4876, 0.7730



74.1203, -0.5754, 0.5652

Rectangle

The Rectangle color scheme consists of four colors that form a rectangle on the color wheel.



74.1187, -0.3608, 7.1532



74.1203, -4.2378, 8.5323



74.1203, -7.4876, 0.7730



74.1203, -3.6794, -0.7640

Sweetspot

The Sweet Spot groups the original color and five complimentary colors.



74.1203, -0.3628, 7.1544



98.5969, -4.1618, 6.3450



73.3373, 3.8637, 0.0663



45.6475, -1.9525, 2.9147

0.0000, NaN, NaN



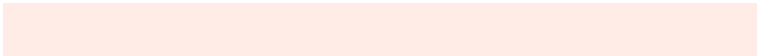
46.2646, -2.4686, 2.5136

Same Dimension

The Same Dimension uses a secret algorithm to generate beautiful new colors.



74.1203, -0.3628, 7.1544



93.0868, 0.6778, 9.9231



76.6732, -4.6560, 9.9346



34.1107, 0.0836, 3.5006



30.8761, 40.7790, 19.7396



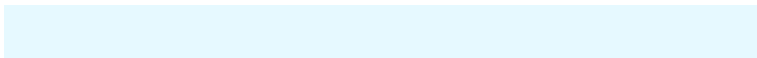
7.8255, 6.9792, 4.9442

Inverse Universe

The Inverse Universe completely reimagines the original color for something new.



75.8387, -7.3909, 0.9509



95.7645, -10.2765, 0.2559



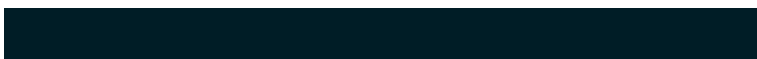
73.2475, -3.1299, -2.1861



35.0167, -3.6226, 0.2297



42.2483, -13.0409, -24.6551



10.1597, -3.7377, -4.6302

Previews

White Background



This preview shows how the HunterLab color 74.1187, -0.3608, 7.1532 looks on a white background.

Color Contrast Check

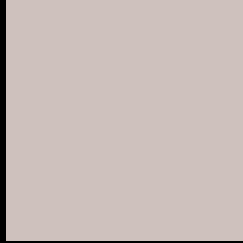
Large Text (above 18pt) WCAG AA × Fail

Any Text WCAG AA × Fail

Large Text (above 18pt) WCAG AAA × Fail

Any Text WCAG AAA × Fail

Black Background



This preview shows how the HunterLab color 74.1187, -0.3608, 7.1532 looks on a black background.

Color Contrast Check

Large Text (above 18pt) WCAG AA ✓ Pass

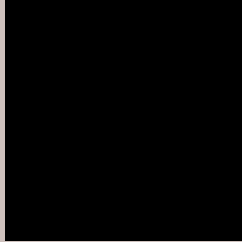
Any Text WCAG AA ✓ Pass

Large Text (above 18pt) WCAG AAA ✓ Pass

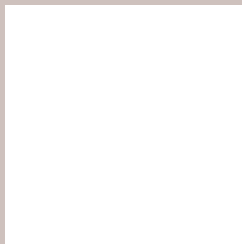
Any Text WCAG AAA ✓ Pass

If you want to check with other color combinations, try the [Color Contrast Checker](#).

HunterLab 74.1187, -0.3608, 7.1532 Background



This preview shows how black text looks on a background with the HunterLab color 74.1187, -0.3608, 7.1532.



This preview shows how white text looks on a background with the HunterLab color 74.1187, -0.3608,

Color Blindness Simulation

Color vision deficiency is a very complex topic, and I could not describe the different causes any better than Wikipedia does, so if you want to learn more, you should check out their [article about color blindness](#).

Dichromacy



Original Color

74.1187, -0.3608, 7.1532

Protanopia

74.1804, -3.1752, 6.7175

Deuteranopia

74.0706, 5.5868, 6.7456



Tritanopia

73.9220, 4.5208, -0.6957

Trichromacy



Original Color

74.1187, -0.3608, 7.1532

Protanomaly

74.0661, -2.0220, 6.6072

Deuteranomaly

73.9532, 3.6927, 6.5782

Tritanomaly

73.9260, 2.6386, 2.2637

Monochromacy



Original Color

74.1187, -0.3608, 7.1532

Achromatopsia

74.2975, -3.9643, 4.0367

Achromatomaly

74.2697, -2.6872, 5.4413

CSS Examples

Text

The CSS property to change the color of the text to HunterLab 74.1187, -0.3608, 7.1532 is called "color". The color property can be set on classes, ids or directly on the HTML element.

This example shows how text in the color `rgb(206, 193, 189)` looks like.

```
.text, #text, p{  
    color:rgb(206, 193, 189)  
}
```

If you want to add a text shadow in that color use the text-shadow property, you can generate a text shadow directly with our [CSS Text Shadow Generator](#).

Here you see how black text with a 4 pixel rgb(206, 193, 189) colored shadow looks like.

```
.shadow{ text-shadow: 4px 4px 2px rgb(206, 193, 189) }
```

Border

The CSS property to change the border of an element to HunterLab 74.1187, -0.3608, 7.1532 is called "border". The border property can be set on classes, ids or directly on the HTML element.

This example shows the color as border, it can be applied via the CSS property "border" or "border-color".

```
.border, #border, table{ border:4px solid rgb(206, 193, 189) }
```


If only the border color should be changed use the property `border-color`.

```
.border{ border-color:rgb(206, 193, 189) }
```

If you want to add a box shadow in that color use:

Here you see how a box with a 4 pixel `rgb(206, 193, 189)` colored shadow looks like.

```
.boxshadow{ -moz-box-shadow:4px 4px 4px  
4px rgb(206, 193, 189); -webkit-box-  
shadow:4px 4px 4px 4px rgb(206, 193, 189);  
box-shadow:4px 4px 4px 4px rgb(206, 193,  
189) }
```

Background

The CSS property to change the background color of an element to HunterLab 74.1187, -0.3608, 7.1532 is called "background". The background property can be set on classes, ids or directly on the HTML element.

```
.background, #background, body{  
background: rgb(206, 193, 189) }
```

If only the background color should be changed can be used:

```
.background{ background-color: rgb(206,  
193, 189) }
```

This example shows the color as background, it is applied via the CSS property "background".

To optimize and compress your CSS code, you can use our [online CSS compressor and optimizer](#) based on csstidy. If you want to create a linear or radial gradient as background or border, check our [CSS Gradient Generator](#).

Hey! You found this booklet interesting? Support Converting Colors with the new Membership Option!

The pro membership hides all ads, plus gives you double the colors in the color bucket, and more awesome pro features!

[Learn more, Memberships starting at \\$2.50/m!](#)

**Follow me
on Twitter!**

@ConvertingColor