

Converting Colors

HunterLab(74.2598, 1.8987,
5.5780)

Have a look what the booklet for
HunterLab(74.2598, 1.8987, 5.5780)
contains.

HunterLab(74.2326, 1.7924, 5.4768)	3
<i>Conversions</i>	4
<i>Details</i>	6
<i>Harmonies</i>	12
<i>Previews</i>	24
<i>Color Blindness Simulation</i>	28
<i>CSS Examples</i>	31

Color

**HunterLab(74.2326, 1.7924,
5.4768)**

Conversions

Conversions Part 1

Format	Color
Hex	D1C0C1
RGB	209, 192, 193
RGB Percent	82%, 75%, 76%
CMY	0.1804, 0.2470, 0.2431
CMYK	0.00, 0.08, 0.08, 0.18
HSL	356°, 16%, 79%
HSV	356°, 8%, 82%
XYZ	54.7697, 55.1048, 58.2017
YIQ	197.1970, 9.8110, 3.9150

Conversions

Conversions Part 2

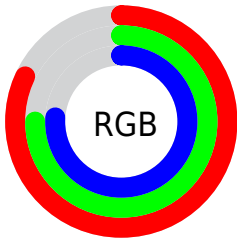
Format	Color
R _{YB}	209, 192, 193
Decimal	13746369
CIE Lab	79.10, 6.15, 1.66
CIE LCh	79, 6.370, 15.066
Yxy	55.1072, 0.3259, 0.3279
Android (android.graphics.Color)	4291936449 (0xFFD1C0C1)
YUV	197.1970, -2.0691, 10.3512
Hunter-Lab	74.2326, 1.7924, 5.4768

Details

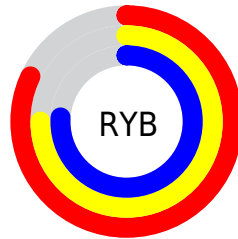
The HunterLab color $74.2326, 1.7924, 5.4768$ is a light color, and the websafe version is hex `CCCCCC`. A complement of this color would be $78.3344, -9.6473, 2.9316$, and the grayscale version is $74.8128, -3.9918, 4.0647$.

A 20% lighter version of the original color is $97.5881, -2.6718, 5.6361$, and $52.2755, 2.3642, 4.1131$ is the 20% darker color. If you saturate the color by 10%, you get $67.6393, 9.4960, 7.0448$, and if you desaturate by 10%, it is $81.1689, -5.6248, 4.0921$.

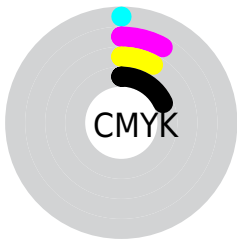
Distribution



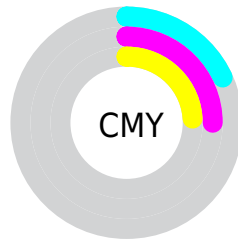
- Red (82%)
- Green (75%)
- Blue (76%)



- Red (82%)
- Yellow (75%)
- Blue (76%)



- Cyan (0%)
- Magenta (8%)
- Yellow (8%)
- Black (18%)



- Cyan (18%)
- Magenta (25%)
- Yellow (24%)

Brightness & Saturation Gradients

These gradients show how the HunterLab color 74.2326, 1.7924, 5.4768 changes by changing the brightness by 10 percent. The first figure shows a shift by +10% for each color and the second figure -10%.

Similar to the brightness gradients but the following saturation gradients show a change of the HunterLab color 74.2326, 1.7924, 5.4768 by changing the saturation by 10% instead.

■ 74.2326, 1.7924,
5.4768

■ 74.2326, 1.7924,
5.4768

201.5734, -2.7951,
12.9872

■ 62.8391, 2.0976,
4.7785

■ 98.8423, 1.0359,
6.9642

■ 52.0953, 2.3524,
4.1095

111.9991, 0.5953,
7.7488

■ 42.0450, 2.5490,
3.4722

125.6928, 0.1160,
8.5600

■ 32.7398, 2.6798,
2.8681

139.9032, -0.3999,
9.3968

■ 24.2449, 2.7345,
2.2984

154.6120, -0.9505,
10.2586

■ 16.6467, 2.6975,
1.7643

169.8030, -1.5341,

■ 10.0670, 2.5440,

11.1447

1.2657

185.4613, -2.1494,
12.0544

0.0000, INF, NaN

0.0000, NaN, NaN

■ 74.2326, 1.7924,
5.4768

■ 74.2326, 1.7924,
5.4768

■ 67.6393, 9.4960,
7.0448

■ 81.1689, -5.6248,
4.0921

■ 61.4451, 17.4964,
8.8155

■ 88.3948, -12.7759,
2.8623

■ 55.7287, 25.7480,
10.8040

■ 95.8736, -19.6973,
1.7652

■ 50.5845, 34.1173,
13.0020

■ 96.0705, -19.2880,
0.4733

■ 46.1230, 42.3250,

15.3584

■ 42.4620, 49.8992,
17.7557

■ 39.7051, 56.1987,
20.0004

■ 37.9042, 60.5843,
21.8558

■ 36.9829, 62.8460,
23.1076

Harmonies

Analogous

The Analogous color harmony consists of three colors that are next to each other on the color wheel.



74.2342, 1.7940, 2.5869



74.2326, 1.7924, 5.4768



74.2342, 0.2278, 7.8871

Triad

The Triadic color harmony groups three colors that are evenly spaced from another and form a triangle on the color wheel.



74.2342, 1.7904, 5.4780



74.2342, -8.0760, 7.8785



74.2342, -5.4720, -1.5612

Complementary

The Complementary color scheme is a pair of colors which are on the opposite of each other on the color wheel.



74.2326, 1.7924, 5.4768



78.3344, -9.6473, 2.9316

Split Complementary

Split-complementary colors differ from the complementary color scheme. The scheme consists of three colors, the original color and two neighbors of the complement color.



74.2342, -8.0667, -0.0231



74.2326, 1.7924, 5.4768



74.2342, -9.5535, 5.4658

Square

The Square scheme is like the rectangle color scheme, but the four colors are evenly spaced on the color wheel.



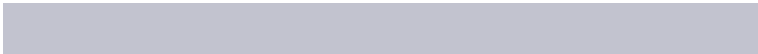
74.2342, 1.7904, 5.4780



74.2342, -5.4850, 9.2345



74.2342, -9.5501, 2.5742



74.2342, -2.4325, -1.5576

Rectangle

The Rectangle color scheme consists of four colors that form a rectangle on the color wheel.



74.2326, 1.7924, 5.4768



74.2342, -1.4734, 8.9293



74.2342, -9.5501, 2.5742



74.2342, -6.4241, -1.2047

Sweetspot

The Sweet Spot groups the original color and five complimentary colors.



74.2342, 1.7904, 5.4780



98.2261, -3.4723, 5.7751



74.6295, 4.1405, -1.8645



45.4844, -1.6493, 2.6639

0.0000, NaN, NaN



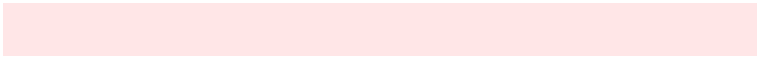
46.2646, -2.4686, 2.5136

Same Dimension

The Same Dimension uses a secret algorithm to generate beautiful new colors.



74.2342, 1.7904, 5.4780



91.2935, 4.1259, 7.2304



76.4059, -2.1392, 8.3435



34.3792, 1.2922, 2.6556



28.9472, 49.6477, 18.1260



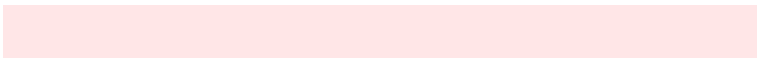
6.8743, 11.8487, 3.8509

Inverse Universe

The Inverse Universe completely reimagines the original color for something new.



74.2342, 1.7904, 5.4780



91.2935, 4.1259, 7.2304



76.0796, -5.7780, -0.2313



34.3792, 1.2922, 2.6556



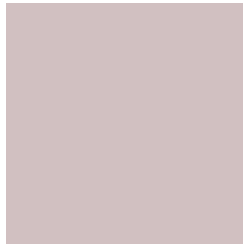
28.9472, 49.6477, 18.1260



6.8743, 11.8487, 3.8509

Previews

White Background



This preview shows how the HunterLab color 74.2326, 1.7924, 5.4768 looks on a white background.

Color Contrast Check

Large Text (above 18pt) WCAG AA × Fail

Any Text WCAG AA × Fail

Large Text (above 18pt) WCAG AAA × Fail

Any Text WCAG AAA × Fail

Black Background



This preview shows how the HunterLab color 74.2326, 1.7924, 5.4768 looks on a black background.

Color Contrast Check

Large Text (above 18pt) WCAG AA ✓ Pass

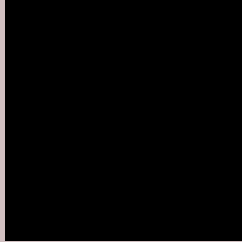
Any Text WCAG AA ✓ Pass

Large Text (above 18pt) WCAG AAA ✓ Pass

Any Text WCAG AAA ✓ Pass

If you want to check with other color combinations, try the [Color Contrast Checker](#).

HunterLab 74.2326, 1.7924, 5.4768 Background



This preview shows how black text looks on a background with the HunterLab color 74.2326, 1.7924, 5.4768.



This preview shows how white text looks on a background with the HunterLab color 74.2326, 1.7924,

Color Blindness Simulation

Color vision deficiency is a very complex topic, and I could not describe the different causes any better than Wikipedia does, so if you want to learn more, you should check out their [article about color blindness](#).

Dichromacy



Original Color

74.2326, 1.7924, 5.4768

Protanopia

74.3301, -2.3571, 4.5778

Deuteranopia

74.3479, 5.1997, 5.6700



Tritanopia

74.2183, 5.5157, -0.3107

Trichromacy



Original Color

74.2326, 1.7924, 5.4768

Protanomaly

74.2800, -1.0460, 5.0136

Deuteranomaly

74.3357, 3.6560, 5.6289

Tritanomaly

74.2834, 3.9731, 1.7377

Monochromacy



Original Color

74.2326, 1.7924, 5.4768

Achromatopsia

74.7222, -3.9870, 4.0598

Achromatomaly

74.4535, -1.8701, 4.2569

CSS Examples

Text

The CSS property to change the color of the text to HunterLab 74.2326, 1.7924, 5.4768 is called "color". The color property can be set on classes, ids or directly on the HTML element.

This example shows how text in the color `rgb(209, 192, 193)` looks like.

```
.text, #text, p{  
    color:rgb(209, 192, 193)  
}
```

If you want to add a text shadow in that color use the text-shadow property, you can generate a text shadow directly with our [CSS Text Shadow Generator](#).

Here you see how black text with a 4 pixel rgb(209, 192, 193) colored shadow looks like.

```
.shadow{ text-shadow: 4px 4px 2px rgb(209, 192, 193) }
```

Border

The CSS property to change the border of an element to HunterLab 74.2326, 1.7924, 5.4768 is called "border".

The border property can be set on classes, ids or directly on the HTML element.

This example shows the color as border, it can be applied via the CSS property "border" or "border-color".

```
.border, #border, table{ border:4px solid rgb(209, 192, 193) }
```


If only the border color should be changed use the property `border-color`.

```
.border{ border-color:rgb(209, 192, 193) }
```

If you want to add a box shadow in that color use:

Here you see how a box with a 4 pixel `rgb(209, 192, 193)` colored shadow looks like.

```
.boxshadow{ -moz-box-shadow:4px 4px 4px  
4px rgb(209, 192, 193); -webkit-box-  
shadow:4px 4px 4px 4px rgb(209, 192, 193);  
box-shadow:4px 4px 4px 4px rgb(209, 192,  
193) }
```

Background

The CSS property to change the background color of an element to HunterLab 74.2326, 1.7924, 5.4768 is called "background". The background property can be set on classes, ids or directly on the HTML element.

```
.background, #background, body{  
background: rgb(209, 192, 193) }
```

If only the background color should be changed can be used:

```
.background{ background-color: rgb(209,  
192, 193) }
```

This example shows the color as background, it is applied via the CSS property "background".

To optimize and compress your CSS code, you can use our [online CSS compressor and optimizer](#) based on csstidy. If you want to create a linear or radial gradient as background or border, check our [CSS Gradient Generator](#).

Hey! You found this booklet interesting? Support Converting Colors with the new Membership Option!

The pro membership hides all ads, plus gives you double the colors in the color bucket, and more awesome pro features!

[Learn more, Memberships starting at \\$2.50/m!](#)

**Follow me
on Twitter!**

@ConvertingColor