

Converting Colors

HunterLab(74.2919, 6.8415,
14.4126)

Have a look what the booklet for
HunterLab(74.2919, 6.8415,
14.4126) contains.

HunterLab(74.2646, 6.7761, 14.3168)	3
<i>Conversions</i>	4
<i>Details</i>	6
<i>Harmonies</i>	12
<i>Previews</i>	24
<i>Color Blindness Simulation</i>	28
<i>CSS Examples</i>	31

Color

**HunterLab(74.2646, 6.7761,
14.3168)**

Conversions

Conversions Part 1

Format	Color
Hex	E2BCAD
RGB	226, 188, 173
RGB Percent	89%, 74%, 68%
CMY	0.1137, 0.2627, 0.3216
CMYK	0.00, 0.17, 0.23, 0.11
HSL	17°, 48%, 78%
HSV	17°, 23%, 89%
XYZ	56.8901, 55.1523, 47.1822
YIQ	197.6520, 27.4630, 3.3910

Conversions

Conversions Part 2

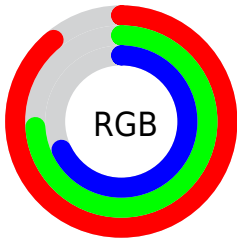
Format	Color
R _Y B	226, 194, 173
Decimal	14859437
CIE Lab	79.13, 11.33, 12.67
CIE LCh	79, 17.001, 48.187
Yxy	55.1548, 0.3573, 0.3464
Android (android.graphics.Color)	4293049517 (0xFFE2BCAD)
YUV	197.6520, -12.1534, 24.8612
Hunter-Lab	74.2646, 6.7761, 14.3168

Details

The HunterLab color $74.2646, 6.7761, 14.3168$ is a light color, and the websafe version is hex `FFCCCC`. A complement of this color would be $78.0782, -12.6014, -6.7470$, and the grayscale version is $75.0425, -4.0041, 4.0772$.

A 20% lighter version of the original color is $95.6885, -4.0539, 13.4128$, and $52.2058, 6.7448, 11.7432$ is the 20% darker color. If you saturate the color by 10%, you get $69.1478, 12.2364, 17.9365$, and if you desaturate by 10%, it is $79.6371, 1.6761, 10.3969$.

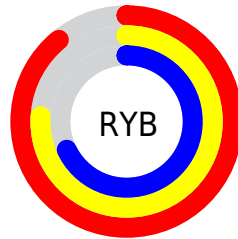
Distribution



Red (89%)

Green (74%)

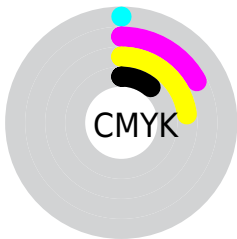
Blue (68%)



Red (89%)

Yellow (76%)

Blue (68%)

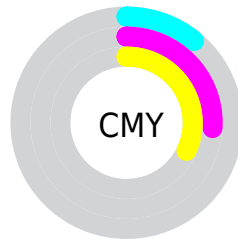


Cyan (0%)

Magenta (17%)

Yellow (23%)

Black (11%)



Cyan (11%)


Magenta (26%)

Yellow (32%)

Brightness & Saturation Gradients


These gradients show how the HunterLab color 74.2646, 6.7761, 14.3168 changes by changing the brightness by 10 percent. The first figure shows a shift by +10% for each color and the second figure -10%.

Similar to the brightness gradients but the following saturation gradients show a change of the HunterLab color 74.2646, 6.7761, 14.3168 by changing the saturation by 10% instead.

 74.2646, 6.7761,
14.3168

 74.2646, 6.7761,
14.3168


201.6181, 4.0155,
25.8685

 62.8695, 6.8348,
13.0523


 98.8776, 6.4781,
16.8426

 52.1238, 6.8304,
11.7776


112.0359, 6.2532,
18.1085

 42.0715, 6.7523,
10.4858


125.7310, 5.9816,
19.3801

 32.7642, 6.5897,
9.1649

139.9428, 5.6665,
20.6589

 24.2670, 6.3281,
7.7957

154.6530, 5.3102,
21.9462

 16.6662, 5.9466,
6.3456

169.8453, 4.9150,

 10.0835, 5.4133,

23.2431

5.7961

185.5048, 4.4829,
24.5503

0.0000, INF, NaN

0.0000, NaN, NaN

■ 74.2646, 6.7761,
14.3168

■ 74.2646, 6.7761,
14.3168

■ 69.1478, 12.2364,
17.9365

■ 79.6371, 1.6761,
10.3969

■ 64.3161, 18.0804,
21.1848

■ 85.2308, -3.0834,
6.2270

■ 59.8115, 24.2997,
23.9791

■ 91.0227, -7.5370,
1.8501

■ 55.6797, 30.8507,
26.2211

■ 96.7065, -13.3031,
1.3540

■ 51.9708, 37.6334,

■ 97.4212, -14.4266,

27.8058

2.2001

■ 48.7360, 44.4702,
28.6397

■ 46.0215, 51.0932,
28.6800

■ 44.5348, 55.1190,
28.4071

Harmonies

Analogous

The Analogous color harmony consists of three colors that are next to each other on the color wheel.



74.2663, 11.5169, 8.5469



74.2646, 6.7761, 14.3168



74.2663, -0.7310, 17.2049

Triad

The Triadic color harmony groups three colors that are evenly spaced from another and form a triangle on the color wheel.



74.2663, 6.7736, 14.3179



74.2663, -18.6928, 7.0303



74.2663, 0.9886, -11.5618

Complementary

The Complementary color scheme is a pair of colors which are on the opposite of each other on the color wheel.



74.2646, 6.7761, 14.3168



78.0782, -12.6014, -6.7470

Split Complementary

Split-complementary colors differ from the complementary color scheme. The scheme consists of three colors, the original color and two neighbors of the complement color.



74.2663, -7.1479, -12.0810



74.2646, 6.7761, 14.3168



74.2663, -18.2772, -0.7629

Square

The Square scheme is like the rectangle color scheme, but the four colors are evenly spaced on the color wheel.



74.2663, 6.7736, 14.3179



74.2663, -15.2903, 13.3110



74.2663, -14.1292, -7.9498



74.2663, 8.0790, -6.5998

Rectangle

The Rectangle color scheme consists of four colors that form a rectangle on the color wheel.



74.2646, 6.7761, 14.3168



74.2663, -6.1853, 17.3370



74.2663, -14.1292, -7.9498



74.2663, -1.7216, -12.2799

Sweetspot

The Sweet Spot groups the original color and five complimentary colors.



74.2663, 6.7736, 14.3179



95.3984, -1.6155, 8.8894



71.2764, 20.9558, -7.4526



43.9546, -0.5952, 4.2479

0.0000, NaN, NaN



46.2646, -2.4686, 2.5136

Same Dimension

The Same Dimension uses a secret algorithm to generate beautiful new colors.



74.2663, 6.7736, 14.3179



82.3414, 10.6803, 18.4310



81.9110, -6.3575, 21.7445



37.8540, -0.1256, 4.0473



33.8961, 40.8735, 21.6022



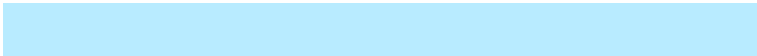
9.7256, 8.5560, 6.1427

Inverse Universe

The Inverse Universe completely reimagines the original color for something new.



78.0782, -12.6014, -6.7470



87.5531, -15.8692, -10.3953



70.1623, 0.3186, -17.5630



38.5774, -3.7888, 0.0554



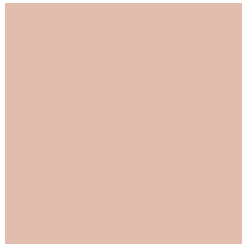
42.5320, -10.1770, -31.1920



11.8473, -3.6160, -7.0021

Previews

White Background



This preview shows how the HunterLab color 74.2646, 6.7761, 14.3168 looks on a white background.

Color Contrast Check

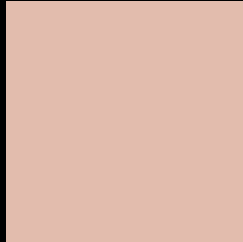
Large Text (above 18pt) WCAG AA × Fail

Any Text WCAG AA × Fail

Large Text (above 18pt) WCAG AAA × Fail

Any Text WCAG AAA × Fail

Black Background



This preview shows how the HunterLab color 74.2646, 6.7761, 14.3168 looks on a black background.

Color Contrast Check

Large Text (above 18pt) WCAG AA ✓ Pass

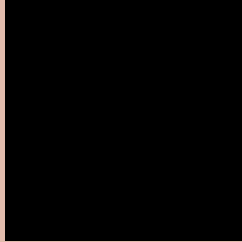
Any Text WCAG AA ✓ Pass

Large Text (above 18pt) WCAG AAA ✓ Pass

Any Text WCAG AAA ✓ Pass

If you want to check with other color combinations, try the [Color Contrast Checker](#).

HunterLab 74.2646, 6.7761, 14.3168 Background



This preview shows how black text looks on a background with the HunterLab color 74.2646, 6.7761, 14.3168.



This preview shows how white text looks on a background with the HunterLab color 74.2646, 6.7761,

Color Blindness Simulation

Color vision deficiency is a very complex topic, and I could not describe the different causes any better than Wikipedia does, so if you want to learn more, you should check out their [article about color blindness](#).

Dichromacy



Original Color

74.2646, 6.7761, 14.3168

Protanopia

74.4927, -4.3752, 12.7193

Deuteranopia

74.3368, 5.5344, 14.3702



Tritanopia

74.2041, 13.9028, 2.7947

Trichromacy



Original Color

74.2646, 6.7761, 14.3168

Protanomaly

74.3448, -0.3121, 13.0487

Deuteranomaly

74.4445, 5.8950, 14.4885

Tritanomaly

74.1010, 11.5751, 6.8851

Monochromacy



Original Color

74.2646, 6.7761, 14.3168

Achromatopsia

75.1473, -4.0097, 4.0829

Achromatomaly

74.6107, -0.2071, 7.7130

CSS Examples

Text

The CSS property to change the color of the text to HunterLab 74.2646, 6.7761, 14.3168 is called "color". The color property can be set on classes, ids or directly on the HTML element.

This example shows how text in the color `rgb(226, 188, 173)` looks like.

```
.text, #text, p{  
    color:rgb(226, 188, 173)  
}
```

If you want to add a text shadow in that color use the text-shadow property, you can generate a text shadow directly with our [CSS Text Shadow Generator](#).

Here you see how black text with a 4 pixel rgb(226, 188, 173) colored shadow looks like.

```
.shadow{ text-shadow: 4px 4px 2px rgb(226, 188, 173) }
```

Border

The CSS property to change the border of an element to HunterLab 74.2646, 6.7761, 14.3168 is called "border". The border property can be set on classes, ids or directly on the HTML element.

This example shows the color as border, it can be applied via the CSS property "border" or "border-color".

```
.border, #border, table{ border:4px solid rgb(226, 188, 173) }
```


If only the border color should be changed use the property `border-color`.

```
.border{ border-color:rgb(226, 188, 173) }
```

If you want to add a box shadow in that color use:

Here you see how a box with a 4 pixel `rgb(226, 188, 173)` colored shadow looks like.

```
.boxshadow{ -moz-box-shadow:4px 4px 4px  
4px rgb(226, 188, 173); -webkit-box-  
shadow:4px 4px 4px 4px rgb(226, 188, 173);  
box-shadow:4px 4px 4px 4px rgb(226, 188,  
173) }
```

Background

The CSS property to change the background color of an element to HunterLab 74.2646, 6.7761, 14.3168 is called "background". The background property can be set on classes, ids or directly on the HTML element.

```
.background, #background, body{  
background: rgb(226, 188, 173) }
```

If only the background color should be changed can be used:

```
.background{ background-color: rgb(226,  
188, 173) }
```

This example shows the color as background, it is applied via the CSS property "background".

To optimize and compress your CSS code, you can use our [online CSS compressor and optimizer](#) based on csstidy. If you want to create a linear or radial gradient as background or border, check our [CSS Gradient Generator](#).

Hey! You found this booklet interesting? Support Converting Colors with the new Membership Option!

The pro membership hides all ads, plus gives you double the colors in the color bucket, and more awesome pro features!

[Learn more, Memberships starting at \\$2.50/m!](#)

**Follow me
on Twitter!**

@ConvertingColor