

Converting Colors

HunterLab(74.2961, 1.5405,
9.1795)

Have a look what the booklet for
HunterLab(74.2961, 1.5405, 9.1795)
contains.

HunterLab(74.2961, 1.5405, 9.1795)	3
<i>Conversions</i>	4
<i>Details</i>	6
<i>Harmonies</i>	12
<i>Previews</i>	24
<i>Color Blindness Simulation</i>	28
<i>CSS Examples</i>	31

Color

**HunterLab(74.2961, 1.5405,
9.1795)**

Conversions

Conversions Part 1

Format	Color
Hex	D4C0B9
RGB	212, 192, 185
RGB Percent	83%, 75%, 73%
CMY	0.1686, 0.2470, 0.2745
CMYK	0.00, 0.09, 0.13, 0.17
HSL	16°, 24%, 78%
HSV	16°, 13%, 83%
XYZ	54.7580, 55.1991, 53.6673
YIQ	197.1820, 14.1670, 2.0630

Conversions

Conversions Part 2

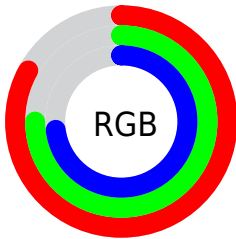
Format	Color
R _Y B	212, 194, 185
Decimal	13942969
CIE Lab	79.16, 5.89, 6.08
CIE LCh	79, 8.463, 45.915
Yxy	55.2016, 0.3347, 0.3374
Android (android.graphics.Color)	4292133049 (0xFFD4C0B9)
YUV	197.1820, -6.0057, 12.9954
Hunter-Lab	74.2961, 1.5405, 9.1795

Details

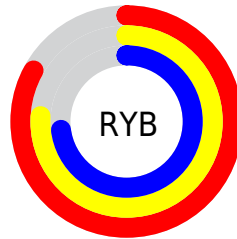
The HunterLab color $74.2961, 1.5405, 9.1795$ is a light color, and the websafe version is hex `CCCCCC`. A complement of this color would be $76.6350, -8.9799, -1.1253$, and the grayscale version is $74.8214, -3.9923, 4.0652$.

A 20% lighter version of the original color is $97.3374, -4.0405, 9.2178$, and $52.2487, 1.8384, 7.4559$ is the 20% darker color. If you saturate the color by 10%, you get $69.1669, 6.4960, 12.7080$, and if you desaturate by 10%, it is $79.6440, -3.1085, 5.4567$.

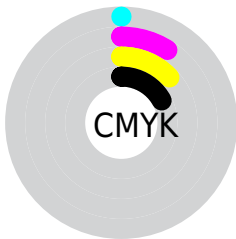
Distribution



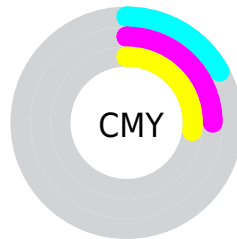
- Red (83%)
- Green (75%)
- Blue (73%)



- Red (83%)
- Yellow (76%)
- Blue (73%)



- Cyan (0%)
- Magenta (9%)
- Yellow (13%)
- Black (17%)



- Cyan (17%)
- Magenta (25%)
- Yellow (27%)

Brightness & Saturation Gradients

These gradients show how the HunterLab color 74.2961, 1.5405, 9.1795 changes by changing the brightness by 10 percent. The first figure shows a shift by +10% for each color and the second figure -10%.

Similar to the brightness gradients but the following saturation gradients show a change of the HunterLab color 74.2961, 1.5405, 9.1795 by changing the saturation by 10% instead.

■ 74.2961, 1.5405,
9.1795

■ 74.2961, 1.5405,
9.1795

201.6620, -3.1428,
18.2734

■ 62.8992, 1.8585,
8.2615

■ 98.9122, 0.7598,
11.0714

■ 52.1518, 2.1270,
7.3582

112.0719, 0.3079,
12.0442

■ 42.0976, 2.3383,
6.4688

125.7685, -0.1824,
13.0357

■ 32.7881, 2.4848,
5.5899

139.9816, -0.7087,
14.0459

■ 24.2887, 2.5565,
4.7156

154.6931, -1.2695,
15.0748

■ 16.6853, 2.5382,
3.8348

169.8867, -1.8630,

■ 10.0997, 2.4060,

16.1225

3.0848

185.5475, -2.4879,
17.1887

0.0000, INF, NaN

0.0000, NaN, NaN

74.2961, 1.5405,
9.1795

74.2961, 1.5405,
9.1795

69.1669, 6.4960,
12.7080

79.6440, -3.1085,
5.4567

64.2805, 11.7894,
15.9924

85.1811, -7.4745,
1.5711

59.6731, 17.4319,
18.9740

90.8887, -11.5904,
-2.4494

55.3851, 23.4141,
21.5766

96.2365, -18.3594,
0.6925

51.4629, 29.6879,

96.3001, -18.4564,

23.7085

0.7686

■ 47.9571, 36.1469,
25.2676

■ 44.9199, 42.6057,
26.1583

■ 42.3983, 48.7894,
26.3266

■ 40.9011, 52.8789,
26.1288

Harmonies

Analogous

The Analogous color harmony consists of three colors that are next to each other on the color wheel.



74.2977, 3.6850, 6.0509



74.2961, 1.5405, 9.1795



74.2977, -2.0600, 10.8892

Triad

The Triadic color harmony groups three colors that are evenly spaced from another and form a triangle on the color wheel.



74.2977, 1.5384, 9.1807



74.2977, -11.3858, 5.8279



74.2977, -1.8166, -3.4535

Complementary

The Complementary color scheme is a pair of colors which are on the opposite of each other on the color wheel.



74.2961, 1.5405, 9.1795



76.6350, -8.9799, -1.1253

Split Complementary

Split-complementary colors differ from the complementary color scheme. The scheme consists of three colors, the original color and two neighbors of the complement color.



74.2977, -5.8576, -3.5212



74.2961, 1.5405, 9.1795



74.2977, -11.3239, 1.9800

Square

The Square scheme is like the rectangle color scheme, but the four colors are evenly spaced on the color wheel.



74.2977, 1.5384, 9.1807



74.2977, -9.4903, 9.0250



74.2977, -9.3191, -1.4873



74.2977, 1.7198, -1.3072

Rectangle

The Rectangle color scheme consists of four colors that form a rectangle on the color wheel.



74.2961, 1.5405, 9.1795



74.2977, -4.7707, 11.0547



74.2977, -9.3191, -1.4873



74.2977, -3.1625, -3.7238

Sweetspot

The Sweet Spot groups the original color and five complimentary colors.



74.2977, 1.5384, 9.1807



97.2805, -3.1031, 7.3368



72.8804, 8.5148, -2.0589



44.7718, -1.2385, 3.5583

0.0000, NaN, NaN



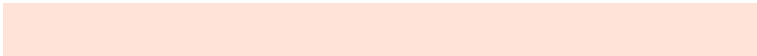
46.2646, -2.4686, 2.5136

Same Dimension

The Same Dimension uses a secret algorithm to generate beautiful new colors.



74.2977, 1.5384, 9.1807



90.0088, 3.3399, 12.3920



78.2833, -5.2013, 13.3834



35.9713, -0.0152, 3.7693



32.3517, 40.9034, 20.6511



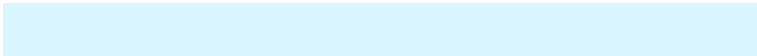
8.7533, 7.7965, 5.5302

Inverse Universe

The Inverse Universe completely reimagines the original color for something new.



76.6350, -8.9799, -1.1253



93.4266, -12.0498, -2.6815



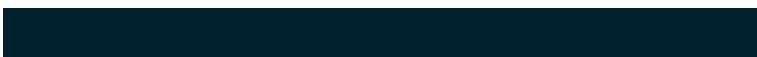
72.5659, -2.3094, -6.2180



36.7929, -3.7107, 0.1470



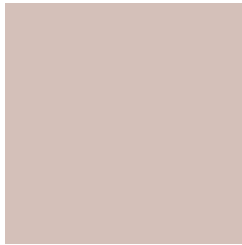
42.4173, -11.6745, -27.8160



11.0258, -3.7236, -5.7430

Previews

White Background



This preview shows how the HunterLab color 74.2961, 1.5405, 9.1795 looks on a white background.

Color Contrast Check

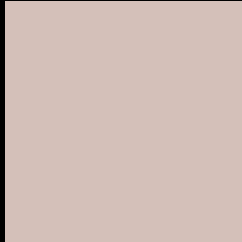
Large Text (above 18pt) WCAG AA × Fail

Any Text WCAG AA × Fail

Large Text (above 18pt) WCAG AAA × Fail

Any Text WCAG AAA × Fail

Black Background



This preview shows how the HunterLab color 74.2961, 1.5405, 9.1795 looks on a black background.

Color Contrast Check

Large Text (above 18pt) WCAG AA ✓ Pass

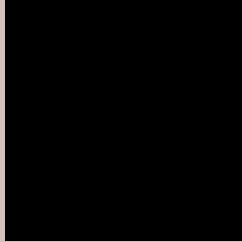
Any Text WCAG AA ✓ Pass

Large Text (above 18pt) WCAG AAA ✓ Pass

Any Text WCAG AAA ✓ Pass

If you want to check with other color combinations, try the [Color Contrast Checker](#).

HunterLab 74.2961, 1.5405, 9.1795 Background



This preview shows how black text looks on a background with the HunterLab color 74.2961, 1.5405, 9.1795.



This preview shows how white text looks on a background with the HunterLab color 74.2961, 1.5405,

9.1795.

Color Blindness Simulation

Color vision deficiency is a very complex topic, and I could not describe the different causes any better than Wikipedia does, so if you want to learn more, you should check out their [article about color blindness](#).

Dichromacy



Original Color

74.2961, 1.5405, 9.1795

Protanopia

74.2796, -3.0060, 8.1918

Deuteranopia

74.1623, 5.6609, 8.6590



Tritanopia

74.2980, 7.2111, 0.3210

Trichromacy



Original Color

74.2961, 1.5405, 9.1795

Protanomaly

74.3307, -1.3422, 8.7243

Deuteranomaly

74.1424, 4.0979, 8.6095

Tritanomaly

74.2659, 5.1682, 3.6814

Monochromacy



Original Color

74.2961, 1.5405, 9.1795

Achromatopsia

74.7222, -3.9870, 4.0598

Achromatomaly

74.4560, -2.0430, 5.6683

CSS Examples

Text

The CSS property to change the color of the text to HunterLab 74.2961, 1.5405, 9.1795 is called "color". The color property can be set on classes, ids or directly on the HTML element.

This example shows how text in the color `rgb(212, 192, 185)` looks like.

```
.text, #text, p{  
    color:rgb(212, 192, 185)  
}
```

If you want to add a text shadow in that color use the text-shadow property, you can generate a text shadow directly with our [CSS Text Shadow Generator](#).

Here you see how black text with a 4 pixel rgb(212, 192, 185) colored shadow looks like.

```
.shadow{ text-shadow: 4px 4px 2px rgb(212, 192, 185) }
```

Border

The CSS property to change the border of an element to HunterLab 74.2961, 1.5405, 9.1795 is called "border".

The border property can be set on classes, ids or directly on the HTML element.

This example shows the color as border, it can be applied via the CSS property "border" or "border-color".

```
.border, #border, table{ border:4px solid rgb(212, 192, 185) }
```


If only the border color should be changed use the property `border-color`.

```
.border{ border-color:rgb(212, 192, 185) }
```

If you want to add a box shadow in that color use:

Here you see how a box with a 4 pixel `rgb(212, 192, 185)` colored shadow looks like.

```
.boxshadow{ -moz-box-shadow:4px 4px 4px  
4px rgb(212, 192, 185); -webkit-box-  
shadow:4px 4px 4px 4px rgb(212, 192, 185);  
box-shadow:4px 4px 4px 4px rgb(212, 192,  
185) }
```

Background

The CSS property to change the background color of an element to HunterLab 74.2961, 1.5405, 9.1795 is called "background". The background property can be set on classes, ids or directly on the HTML element.

```
.background, #background, body{  
background: rgb(212, 192, 185) }
```

If only the background color should be changed can be used:

```
.background{ background-color: rgb(212,  
192, 185) }
```

This example shows the color as background, it is applied via the CSS property "background".

To optimize and compress your CSS code, you can use our [online CSS compressor and optimizer](#) based on csstidy. If you want to create a linear or radial gradient as background or border, check our [CSS Gradient Generator](#).

Hey! You found this booklet interesting? Support Converting Colors with the new Membership Option!

The pro membership hides all ads, plus gives you double the colors in the color bucket, and more awesome pro features!

[Learn more, Memberships starting at \\$2.50/m!](#)

**Follow me
on Twitter!**

@ConvertingColor