

Converting Colors

HunterLab(74.3032, 2.4831,
6.7345)

Have a look what the booklet for
HunterLab(74.3032, 2.4831, 6.7345)
contains.

HunterLab(74.4406, 2.3207, 7.1102)	3
<i>Conversions</i>	4
<i>Details</i>	6
<i>Harmonies</i>	12
<i>Previews</i>	24
<i>Color Blindness Simulation</i>	28
<i>CSS Examples</i>	31

Color

**HunterLab(74.4406, 2.3207,
7.1102)**

Conversions

Conversions Part 1

Format	Color
Hex	D4C0BE
RGB	212, 192, 190
RGB Percent	83%, 75%, 75%
CMY	0.1686, 0.2470, 0.2549
CMYK	0.00, 0.09, 0.10, 0.17
HSL	5°, 20%, 79%
HSV	5°, 10%, 83%
XYZ	55.2953, 55.4140, 56.4968
YIQ	197.7520, 12.5620, 3.6180

Conversions

Conversions Part 2

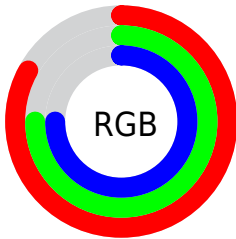
Format	Color
R _Y B	212, 192, 190
Decimal	13942974
CIE Lab	79.28, 6.71, 3.56
CIE LCh	79, 7.599, 27.957
Yxy	55.4165, 0.3307, 0.3314
Android (android.graphics.Color)	4292133054 (0xFFD4C0BE)
YUV	197.7520, -3.8217, 12.4955
Hunter-Lab	74.4406, 2.3207, 7.1102

Details

The HunterLab color $74.4406, 2.3207, 7.1102$ is a light color, and the websafe version is hex `CCCCCC`. A complement of this color would be $78.6083, -10.0272, 1.2821$, and the grayscale version is $75.0552, -4.0048, 4.0779$.

A 20% lighter version of the original color is $97.4929, -3.1912, 6.9952$, and $52.3827, 2.5596, 5.5351$ is the 20% darker color. If you saturate the color by 10%, you get $68.2937, 9.0478, 9.7381$, and if you desaturate by 10%, it is $80.8921, -4.0935, 4.5062$.

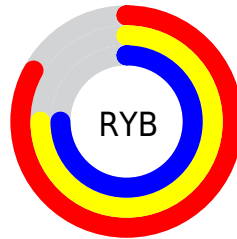
Distribution



Red (83%)

Green (75%)

Blue (75%)



Red (83%)

Yellow (75%)

Blue (75%)

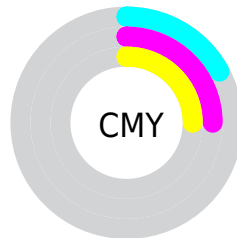


Cyan (0%)

Magenta (9%)

Yellow (10%)

Black (17%)



Cyan (17%)

Magenta (25%)

Yellow (25%)

Brightness & Saturation Gradients

These gradients show how the HunterLab color 74.4406, 2.3207, 7.1102 changes by changing the brightness by 10 percent. The first figure shows a shift by +10% for each color and the second figure -10%.

Similar to the brightness gradients but the following saturation gradients show a change of the HunterLab color 74.4406, 2.3207, 7.1102 by changing the saturation by 10% instead.

■ 74.4406, 2.3207,
7.1102

■ 74.4406, 2.3207,
7.1102

201.8635, -2.0731,
15.2996

■ 63.0359, 2.5997,
6.3181

■ 99.0711, 1.6128,
8.7706

■ 52.2802, 2.8270,
5.5493

112.2376, 1.1951,
9.6358

■ 42.2171, 2.9944,
4.8049

125.9407, 0.7378,
10.5242

■ 32.8982, 3.0941,
4.0844

140.1601, 0.2432,
11.4354

■ 24.3883, 3.1151,
3.3861

154.8776, -0.2868,
12.3690

■ 16.7732, 3.0413,
2.7063

170.0770, -0.8505,

■ 10.1740, 2.8471,

13.3245

2.0541

185.7435, -1.4464,
14.3015

0.0000, INF, NaN

0.0000, NaN, NaN

■ 74.4406, 2.3207,
7.1102

■ 74.4406, 2.3207,
7.1102

■ 68.2937, 9.0478,
9.7381

■ 80.8921, -4.0935,
4.5062

■ 62.4966, 16.1110,
12.3695

■ 87.6030, -10.2196,
1.9292

■ 57.1129, 23.4927,
14.9717

■ 94.5422, -16.0955,
-0.6190

■ 52.2172, 31.1165,
17.4844

■ 96.3002, -18.4564,
0.7686

■ 47.8968, 38.8053,

19.8102

■ 44.2455, 46.2409,
21.8108

■ 41.3518, 52.9525,
23.3206

■ 39.2758, 58.3844,
24.1962

■ 38.0440, 61.9341,
24.5268

Harmonies

Analogous

The Analogous color harmony consists of three colors that are next to each other on the color wheel.



74.4422, 3.1609, 3.8139



74.4406, 2.3207, 7.1102



74.4422, -0.2196, 9.4866

Triad

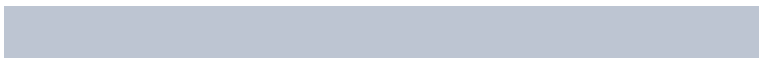
The Triadic color harmony groups three colors that are evenly spaced from another and form a triangle on the color wheel.



74.4422, 2.3186, 7.1114



74.4422, -9.8262, 7.5045



74.4422, -4.2259, -2.9259

Complementary

The Complementary color scheme is a pair of colors which are on the opposite of each other on the color wheel.



74.4406, 2.3207, 7.1102



78.6083, -10.0272, 1.2821

Split Complementary

Split-complementary colors differ from the complementary color scheme. The scheme consists of three colors, the original color and two neighbors of the complement color.



74.4422, -7.6594, -1.8258



74.4406, 2.3207, 7.1102



74.4422, -10.8538, 4.2895

Square

The Square scheme is like the rectangle color scheme, but the four colors are evenly spaced on the color wheel.



74.4422, 2.3186, 7.1114



74.4422, -7.2344, 9.7058



74.4422, -10.0682, 0.8572



74.4422, -0.6607, -2.0830

Rectangle

The Rectangle color scheme consists of four colors that form a rectangle on the color wheel.



74.4406, 2.3207, 7.1102



74.4422, -2.5075, 10.2840



74.4422, -10.0682, 0.8572



74.4422, -5.4333, -2.7701

Sweetspot

The Sweet Spot groups the original color and five complimentary colors.



74.4422, 2.3186, 7.1114



97.5503, -2.9832, 6.4027



74.4891, 6.7599, -2.6007



44.8307, -1.0867, 3.0823

0.0000, NaN, NaN



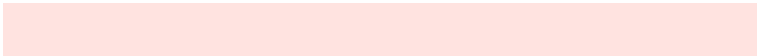
46.2646, -2.4686, 2.5136

Same Dimension

The Same Dimension uses a secret algorithm to generate beautiful new colors.



74.4422, 2.3186, 7.1114



90.3903, 4.2795, 9.3292



77.6844, -3.2225, 10.6315



35.4976, 0.8024, 3.2463



29.9980, 48.3078, 19.3303



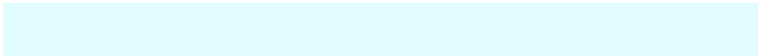
7.7904, 10.5137, 4.9845

Inverse Universe

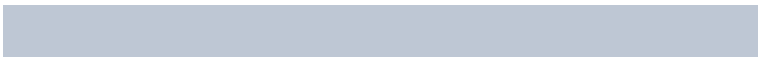
The Inverse Universe completely reimagines the original color for something new.



78.6083, -10.0272, 1.2821



96.3773, -13.4697, 0.9501



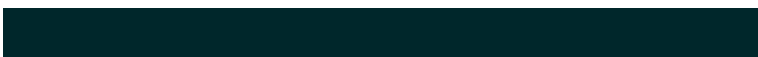
75.2496, -4.5860, -2.7893



37.2899, -4.5080, 0.7387



51.4524, -23.7592, -13.0218



12.8630, -6.1175, -2.8715

Previews

White Background



This preview shows how the HunterLab color 74.4406, 2.3207, 7.1102 looks on a white background.

Color Contrast Check

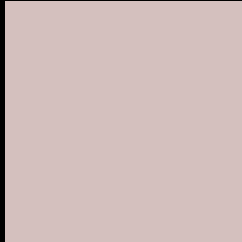
Large Text (above 18pt) WCAG AA × Fail

Any Text WCAG AA × Fail

Large Text (above 18pt) WCAG AAA × Fail

Any Text WCAG AAA × Fail

Black Background



This preview shows how the HunterLab color 74.4406, 2.3207, 7.1102 looks on a black background.

Color Contrast Check

Large Text (above 18pt) WCAG AA ✓ Pass

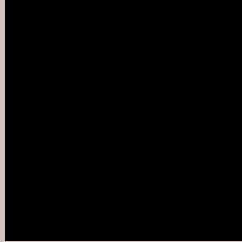
Any Text WCAG AA ✓ Pass

Large Text (above 18pt) WCAG AAA ✓ Pass

Any Text WCAG AAA ✓ Pass

If you want to check with other color combinations, try the [Color Contrast Checker](#).

HunterLab 74.4406, 2.3207, 7.1102 Background



This preview shows how black text looks on a background with the HunterLab color 74.4406, 2.3207, 7.1102.



This preview shows how white text looks on a background with the HunterLab color 74.4406, 2.3207,

Color Blindness Simulation

Color vision deficiency is a very complex topic, and I could not describe the different causes any better than Wikipedia does, so if you want to learn more, you should check out their [article about color blindness](#).

Dichromacy



Original Color

74.4406, 2.3207, 7.1102

Protanopia

74.6345, -3.0354, 6.3200

Deuteranopia

74.4648, 5.4136, 7.1918



Tritanopia

74.5190, 6.5213, 0.0784

Trichromacy



Original Color

74.4406, 2.3207, 7.1102

Protanomaly

74.6799, -1.3898, 6.8605

Deuteranomaly

74.5508, 4.2033, 7.2684

Tritanomaly

74.5506, 4.8093, 2.5639

Monochromacy



Original Color

74.4406, 2.3207, 7.1102

Achromatopsia

75.1473, -4.0097, 4.0829

Achromatomaly

74.9109, -1.8999, 5.2629

CSS Examples

Text

The CSS property to change the color of the text to HunterLab 74.4406, 2.3207, 7.1102 is called "color". The color property can be set on classes, ids or directly on the HTML element.

This example shows how text in the color `rgb(212, 192, 190)` looks like.

```
.text, #text, p{  
    color:rgb(212, 192, 190)  
}
```

If you want to add a text shadow in that color use the text-shadow property, you can generate a text shadow directly with our [CSS Text Shadow Generator](#).

Here you see how black text with a 4 pixel rgb(212, 192, 190) colored shadow looks like.

```
.shadow{ text-shadow: 4px 4px 2px rgb(212, 192, 190) }
```

Border

The CSS property to change the border of an element to HunterLab 74.4406, 2.3207, 7.1102 is called "border". The border property can be set on classes, ids or directly on the HTML element.

This example shows the color as border, it can be applied via the CSS property "border" or "border-color".

```
.border, #border, table{ border:4px solid rgb(212, 192, 190) }
```


If only the border color should be changed use the property `border-color`.

```
.border{ border-color:rgb(212, 192, 190) }
```

If you want to add a box shadow in that color use:

Here you see how a box with a 4 pixel `rgb(212, 192, 190)` colored shadow looks like.

```
.boxshadow{ -moz-box-shadow:4px 4px 4px  
4px rgb(212, 192, 190); -webkit-box-  
shadow:4px 4px 4px 4px rgb(212, 192, 190);  
box-shadow:4px 4px 4px 4px rgb(212, 192,  
190) }
```

Background

The CSS property to change the background color of an element to HunterLab 74.4406, 2.3207, 7.1102 is called "background". The background property can be set on classes, ids or directly on the HTML element.

```
.background, #background, body{  
background: rgb(212, 192, 190) }
```

If only the background color should be changed can be used:

```
.background{ background-color: rgb(212,  
192, 190) }
```

This example shows the color as background, it is applied via the CSS property "background".

To optimize and compress your CSS code, you can use our [online CSS compressor and optimizer](#) based on csstidy. If you want to create a linear or radial gradient as background or border, check our [CSS Gradient Generator](#).

Hey! You found this booklet interesting? Support Converting Colors with the new Membership Option!

The pro membership hides all ads, plus gives you double the colors in the color bucket, and more awesome pro features!

[Learn more, Memberships starting at \\$2.50/m!](#)

**Follow me
on Twitter!**

@ConvertingColor