

Converting Colors

HunterLab(74.4029, 0.8963,
17.1139)

Have a look what the booklet for
HunterLab(74.4029, 0.8963,
17.1139) contains.

HunterLab(74.4029, 0.8963, 17.1139)	3
<i>Conversions</i>	4
<i>Details</i>	6
<i>Harmonies</i>	12
<i>Previews</i>	24
<i>Color Blindness Simulation</i>	28
<i>CSS Examples</i>	31

Color

**HunterLab(74.4029, 0.8963,
17.1139)**

Conversions

Conversions Part 1

Format	Color
Hex	DAC0A6
RGB	218, 192, 166
RGB Percent	85%, 75%, 65%
CMY	0.1451, 0.2470, 0.3490
CMYK	0.00, 0.12, 0.24, 0.15
HSL	30°, 41%, 75%
HSV	30°, 24%, 85%
XYZ	54.6461, 55.3579, 43.8814
YIQ	196.8100, 23.8420, -2.5740

Conversions

Conversions Part 2

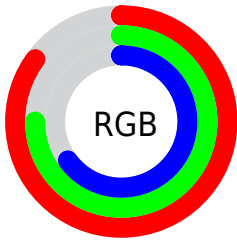
Format	Color
R _Y B	218, 218, 166
Decimal	14336166
CIE Lab	79.25, 5.21, 16.49
CIE LCh	79, 17.293, 72.463
Yxy	55.3604, 0.3551, 0.3597
Android (android.graphics.Color)	4292526246 (0xFFDAC0A6)
YUV	196.8100, -15.1893, 18.5836
Hunter-Lab	74.4029, 0.8963, 17.1139

Details

The HunterLab color $74.4029, 0.8963, 17.1139$ is a light color, and the websafe version is hex `CCCC99`. A complement of this color would be $71.3211, -6.6060, -11.3088$, and the grayscale version is $74.6982, -3.9857, 4.0585$.

A 20% lighter version of the original color is $96.7550, -7.2339, 17.5748$, and $52.4087, 1.5191, 14.3107$ is the 20% darker color. If you saturate the color by 10%, you get $70.7225, 3.7172, 21.4559$, and if you desaturate by 10%, it is $78.2267, -1.5785, 12.2004$.

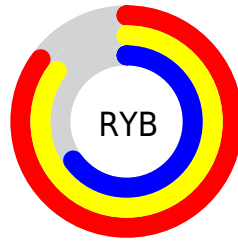
Distribution



Red (85%)

Green (75%)

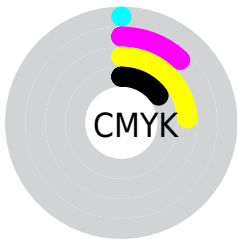
Blue (65%)



Red (85%)

Yellow (85%)

Blue (65%)

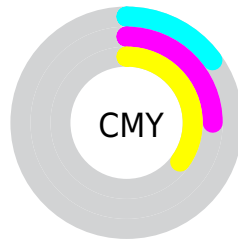


Cyan (0%)

Magenta (12%)

Yellow (24%)

Black (15%)



Cyan (15%)


Magenta (25%)


Yellow (35%)

Brightness & Saturation Gradients

These gradients show how the HunterLab color 74.4029, 0.8963, 17.1139 changes by changing the brightness by 10 percent. The first figure shows a shift by +10% for each color and the second figure -10%.


Similar to the brightness gradients but the following saturation gradients show a change of the HunterLab color 74.4029, 0.8963, 17.1139 by changing the saturation by 10% instead.

 74.4029, 0.8963,
17.1139


 74.4029, 0.8963,
17.1139


201.8110, -4.0318,
30.1399

 63.0003, 1.2472,
15.6395

 99.0297, 0.0536,
20.0221

 52.2467, 1.5508,
14.1393


 112.1945, -0.4272,
21.4644

 42.1860, 1.7993,
12.6023


125.8958, -0.9452,
22.9041

 32.8695, 1.9859,
11.0114

140.1136, -1.4984,
24.3438

 24.3623, 2.1010,
9.3395

154.8295, -2.0851,
25.7857

 16.7503, 2.1308,
7.5416

170.0274, -2.7038,

 10.1546, 2.0528,

27.2315

7.1082

185.6924, -3.3531,
28.6825

0.0000, INF, NaN

0.0000, NaN, NaN

■ 74.4029, 0.8963,
17.1139

■ 74.4029, 0.8963,
17.1139

■ 70.7225, 3.7172,
21.4559

■ 78.2267, -1.5785,
12.2004

■ 67.1927, 6.9125,
25.1626

■ 82.1777, -3.7235,
6.7688

■ 63.8284, 10.4953,
28.1729

■ 86.2474, -5.5656,
0.8716

■ 60.6438, 14.4724,
30.4268

■ 90.4268, -7.1288,
-5.4452

■ 57.6532, 18.8366,

■ 93.9891, -12.4143,

31.8744

-1.9820

■ 54.8707, 23.5601,
32.4883

■ 96.7706, -16.7592,
1.3714

■ 52.3082, 28.5855,
32.2854

■ 50.8397, 31.7547,
31.8831

Harmonies

Analogous

The Analogous color harmony consists of three colors that are next to each other on the color wheel.



74.4046, 8.1633, 13.5834



74.4029, 0.8963, 17.1139



74.4046, -7.3853, 17.3956

Triad

The Triadic color harmony groups three colors that are evenly spaced from another and form a triangle on the color wheel.



74.4046, 0.8939, 17.1150



74.4046, -18.9180, 0.7003



74.4046, 7.1043, -8.0365

Complementary

The Complementary color scheme is a pair of colors which are on the opposite of each other on the color wheel.



74.4029, 0.8963, 17.1139



71.3211, -6.6060, -11.3088

Split Complementary

Split-complementary colors differ from the complementary color scheme. The scheme consists of three colors, the original color and two neighbors of the complement color.



74.4046, -0.5002, -12.3426



74.4029, 0.8963, 17.1139



74.4046, -15.3800, -6.9400

Square

The Square scheme is like the rectangle color scheme, but the four colors are evenly spaced on the color wheel.



74.4046, 0.8939, 17.1150



74.4046, -18.5816, 8.4789



74.4046, -8.7199, -11.9206



74.4046, 11.8554, -0.6690

Rectangle

The Rectangle color scheme consists of four colors that form a rectangle on the color wheel.



74.4029, 0.8963, 17.1139



74.4046, -12.3440, 15.7494



74.4046, -8.7199, -11.9206



74.4046, 4.7831, -9.9245

Sweetspot

The Sweet Spot groups the original color and five complimentary colors.



74.4046, 0.8939, 17.1150



96.6133, -3.6656, 10.2291



67.8118, 18.3785, -1.4957



44.5642, -1.6253, 4.9177

0.0000, NaN, NaN



46.2646, -2.4686, 2.5136

Same Dimension

The Same Dimension uses a secret algorithm to generate beautiful new colors.



74.4046, 0.8939, 17.1150



86.4623, 2.8360, 23.3313



82.3419, -12.1486, 24.5487



37.5792, -1.2054, 4.6352



39.6235, 23.9435, 24.8350



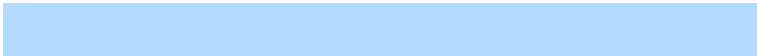
10.9063, 4.2804, 6.7954

Inverse Universe

The Inverse Universe completely reimagines the original color for something new.



71.3211, -6.6060, -11.3088



81.9770, -8.0360, -18.0520



63.5942, 6.6481, -22.5379



36.9964, -2.6302, -0.7304



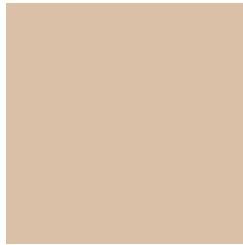
31.3021, 7.7458, -55.8457



8.9840, 0.1034, -11.4524

Previews

White Background



This preview shows how the HunterLab color 74.4029, 0.8963, 17.1139 looks on a white background.

Color Contrast Check

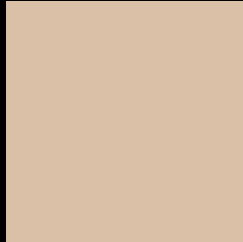
Large Text (above 18pt) WCAG AA × Fail

Any Text WCAG AA × Fail

Large Text (above 18pt) WCAG AAA × Fail

Any Text WCAG AAA × Fail

Black Background



This preview shows how the HunterLab color 74.4029, 0.8963, 17.1139 looks on a black background.

Color Contrast Check

Large Text (above 18pt) WCAG AA ✓ Pass

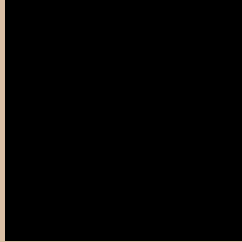
Any Text WCAG AA ✓ Pass

Large Text (above 18pt) WCAG AAA ✓ Pass

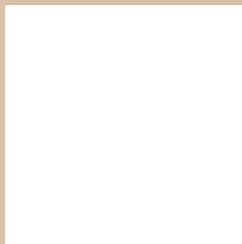
Any Text WCAG AAA ✓ Pass

If you want to check with other color combinations, try the [Color Contrast Checker](#).

HunterLab 74.4029, 0.8963, 17.1139 Background



This preview shows how black text looks on a background with the HunterLab color 74.4029, 0.8963, 17.1139.



This preview shows how white text looks on a background with the HunterLab color 74.4029, 0.8963,

Color Blindness Simulation

Color vision deficiency is a very complex topic, and I could not describe the different causes any better than Wikipedia does, so if you want to learn more, you should check out their [article about color blindness](#).

Dichromacy



Original Color

74.4029, 0.8963, 17.1139

Protanopia

74.4505, -4.9883, 16.2867

Deuteranopia

74.4002, 5.4416, 16.8061



Tritanopia

74.3872, 10.3319, 1.4813

Trichromacy



Original Color

74.4029, 0.8963, 17.1139

Protanomaly

74.5130, -3.2692, 16.7672

Deuteranomaly

74.3673, 3.8390, 16.7448

Tritanomaly

74.4590, 6.8259, 7.6648

Monochromacy



Original Color

74.4029, 0.8963, 17.1139

Achromatopsia

74.7222, -3.9870, 4.0598

Achromatomaly

74.5349, -2.1801, 8.9370

CSS Examples

Text

The CSS property to change the color of the text to HunterLab 74.4029, 0.8963, 17.1139 is called "color". The color property can be set on classes, ids or directly on the HTML element.

This example shows how text in the color `rgb(218, 192, 166)` looks like.

```
.text, #text, p{  
    color:rgb(218, 192, 166)  
}
```

If you want to add a text shadow in that color use the text-shadow property, you can generate a text shadow directly with our [CSS Text Shadow Generator](#).

Here you see how black text with a 4 pixel rgb(218, 192, 166) colored shadow looks like.

```
.shadow{ text-shadow: 4px 4px 2px rgb(218, 192, 166) }
```

Border

The CSS property to change the border of an element to HunterLab 74.4029, 0.8963, 17.1139 is called "border". The border property can be set on classes, ids or directly on the HTML element.

This example shows the color as border, it can be applied via the CSS property "border" or "border-color".

```
.border, #border, table{ border:4px solid rgb(218, 192, 166) }
```


If only the border color should be changed use the property `border-color`.

```
.border{ border-color:rgb(218, 192, 166) }
```

If you want to add a box shadow in that color use:

Here you see how a box with a 4 pixel `rgb(218, 192, 166)` colored shadow looks like.

```
.boxshadow{ -moz-box-shadow:4px 4px 4px  
4px rgb(218, 192, 166); -webkit-box-  
shadow:4px 4px 4px 4px rgb(218, 192, 166);  
box-shadow:4px 4px 4px 4px rgb(218, 192,  
166) }
```

Background

The CSS property to change the background color of an element to HunterLab 74.4029, 0.8963, 17.1139 is called "background". The background property can be set on classes, ids or directly on the HTML element.

```
.background, #background, body{  
background: rgb(218, 192, 166) }
```

If only the background color should be changed can be used:

```
.background{ background-color: rgb(218,  
192, 166) }
```

This example shows the color as background, it is applied via the CSS property "background".

To optimize and compress your CSS code, you can use our [online CSS compressor and optimizer](#) based on csstidy. If you want to create a linear or radial gradient as background or border, check our [CSS Gradient Generator](#).

Hey! You found this booklet interesting? Support Converting Colors with the new Membership Option!

The pro membership hides all ads, plus gives you double the colors in the color bucket, and more awesome pro features!

[Learn more, Memberships starting at \\$2.50/m!](#)

**Follow me
on Twitter!**

@ConvertingColor