

Converting Colors

HunterLab(74.4126, 6.5066,
8.1824)

Have a look what the booklet for
HunterLab(74.4126, 6.5066, 8.1824)
contains.

HunterLab(74.4300, 6.6708, 8.0810)	3
<i>Conversions</i>	4
<i>Details</i>	6
<i>Harmonies</i>	12
<i>Previews</i>	24
<i>Color Blindness Simulation</i>	28
<i>CSS Examples</i>	31

Color

**HunterLab(74.4300, 6.6708,
8.0810)**

Conversions

Conversions Part 1

Format	Color
Hex	DDBDBC
RGB	221, 189, 188
RGB Percent	87%, 74%, 74%
CMY	0.1333, 0.2588, 0.2627
CMYK	0.00, 0.14, 0.15, 0.13
HSL	2°, 33%, 80%
HSV	2°, 15%, 87%
XYZ	57.0936, 55.3982, 55.2607
YIQ	198.4540, 19.3930, 6.4730

Conversions

Conversions Part 2

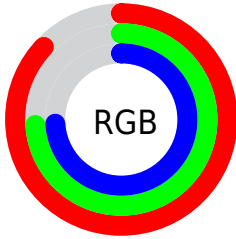
Format	Color
R _Y B	221, 189, 188
Decimal	14532028
CIE Lab	79.27, 11.23, 4.73
CIE LCh	79, 12.183, 22.834
Yxy	55.4007, 0.3403, 0.3302
Android (android.graphics.Color)	4292722108 (0xFFDDBDBC)
YUV	198.4540, -5.1538, 19.7728
Hunter-Lab	74.4300, 6.6708, 8.0810

Details

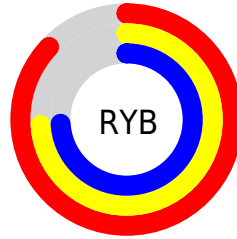
The HunterLab color $74.4300, 6.6708, 8.0810$ is a light color, and the websafe version is hex FFCCCC . A complement of this color would be $81.9126, -13.9426, 0.7155$, and the grayscale version is $75.3573, -4.0209, 4.0943$.

A 20% lighter version of the original color is $96.4865, -1.9416, 6.8276$, and $52.4067, 6.7343, 6.4783$ is the 20% darker color. If you saturate the color by 10%, you get $67.8023, 14.6052, 10.5295$, and if you desaturate by 10%, it is $81.4480, -0.9179, 5.7385$.

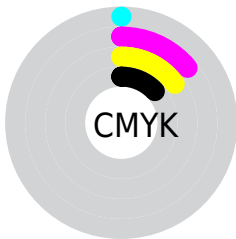
Distribution



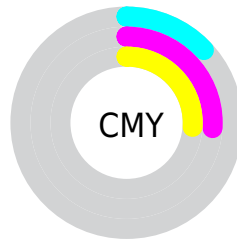
- Red (87%)
- Green (74%)
- Blue (74%)



- Red (87%)
- Yellow (74%)
- Blue (74%)



- Cyan (0%)
- Magenta (14%)
- Yellow (15%)
- Black (13%)




- Cyan (13%)
- Magenta (26%)
- Yellow (26%)

Brightness & Saturation Gradients


These gradients show how the HunterLab color 74.4300, 6.6708, 8.0810 changes by changing the brightness by 10 percent. The first figure shows a shift by +10% for each color and the second figure -10%.


Similar to the brightness gradients but the following saturation gradients show a change of the HunterLab color 74.4300, 6.6708, 8.0810 by changing the saturation by 10% instead.


 74.4300, 6.6708,
8.0810

 74.4300, 6.6708,
8.0810

201.8487, 3.8677,
16.6878

 63.0259, 6.7356,
7.2310


 99.0595, 6.3622,
9.8481

 52.2708, 6.7374,
6.4004


112.2255, 6.1322,
10.7629

 42.2084, 6.6659,
5.5894

125.9281, 5.8558,
11.6989

 32.8901, 6.5105,
4.7963

140.1470, 5.5359,
12.6558

 24.3810, 6.2568,
4.0174

154.8641, 5.1752,
13.6334

 16.7668, 5.8839,
3.2460

170.0631, 4.7756,

 10.1686, 5.3605,

14.6314

2.5289

185.7292, 4.3392,
15.6497

0.0000, INF, NaN

0.0000, NaN, NaN

■ 74.4300, 6.6708,
8.0810

■ 74.4300, 6.6708,
8.0810

■ 67.8023, 14.6052,
10.5295

■ 81.4480, -0.9179,
5.7385

■ 61.6311, 22.8829,
13.0707

■ 88.7946, -8.1781,
3.4949

■ 56.0063, 31.4249,
15.6718

■ 96.4262, -15.1495,
1.3421

■ 51.0333, 40.0363,
18.2575

■ 97.0115, -15.8936,
1.6789

■ 46.8293, 48.3474,

20.6951

■ 43.5086, 55.7898,
22.7921

■ 41.1529, 61.6798,
24.3331

■ 39.7696, 65.4592,
25.1707

■ 39.3932, 66.5098,
25.4383

Harmonies

Analogous

The Analogous color harmony consists of three colors that are next to each other on the color wheel.



74.4317, 7.5072, 2.7055



74.4300, 6.6708, 8.0810



74.4317, 2.9366, 12.0777

Triad

The Triadic color harmony groups three colors that are evenly spaced from another and form a triangle on the color wheel.



74.4317, 6.6685, 8.0822



74.4317, -12.7217, 10.2253



74.4317, -5.3722, -7.3561

Complementary

The Complementary color scheme is a pair of colors which are on the opposite of each other on the color wheel.



74.4300, 6.6708, 8.0810



81.9126, -13.9426, 0.7155

Split Complementary

Split-complementary colors differ from the complementary color scheme. The scheme consists of three colors, the original color and two neighbors of the complement color.



74.4317, -10.6442, -4.9818



74.4300, 6.6708, 8.0810



74.4317, -14.8016, 5.3728

Square

The Square scheme is like the rectangle color scheme, but the four colors are evenly spaced on the color wheel.



74.4317, 6.6685, 8.0822



74.4317, -8.2870, 13.2468



74.4317, -14.0530, -0.2180



74.4317, 0.4364, -6.4908

Rectangle

The Rectangle color scheme consists of four colors that form a rectangle on the color wheel.



74.4300, 6.6708, 8.0810



74.4317, -0.6293, 13.5598



74.4317, -14.0530, -0.2180



74.4317, -7.2635, -6.9045

Sweetspot

The Sweet Spot groups the original color and five complimentary colors.



74.4317, 6.6685, 8.0822



96.5463, -1.8629, 6.5065



75.1868, 12.7217, -7.0889



44.3694, -0.5565, 3.1046

0.0000, NaN, NaN



46.2646, -2.4686, 2.5136

Same Dimension

The Same Dimension uses a secret algorithm to generate beautiful new colors.



74.4317, 6.6685, 8.0822



84.9748, 10.7952, 10.4162



79.1772, -1.6259, 13.1327



36.2141, 1.1344, 3.1377



30.0740, 50.5238, 19.4159



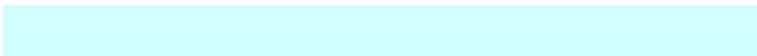
7.8028, 12.3640, 5.0245

Inverse Universe

The Inverse Universe completely reimagines the original color for something new.



81.9126, -13.9426, 0.7155



95.6149, -18.5577, -0.0729



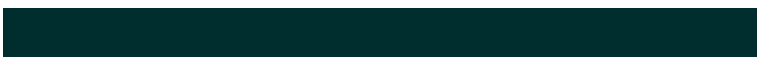
76.8600, -5.9090, -5.5122



38.4162, -4.9230, 0.9722



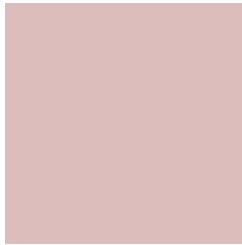
55.7528, -28.3892, -8.4020



14.2673, -7.3182, -2.0351

Previews

White Background



This preview shows how the HunterLab color 74.4300, 6.6708, 8.0810 looks on a white background.

Color Contrast Check

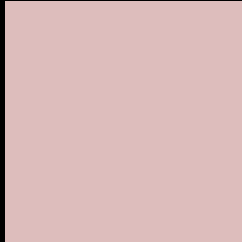
Large Text (above 18pt) WCAG AA × Fail

Any Text WCAG AA × Fail

Large Text (above 18pt) WCAG AAA × Fail

Any Text WCAG AAA × Fail

Black Background



This preview shows how the HunterLab color 74.4300, 6.6708, 8.0810 looks on a black background.

Color Contrast Check

Large Text (above 18pt) WCAG AA ✓ Pass

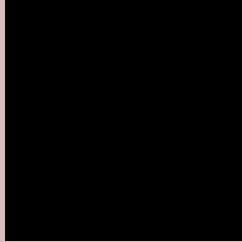
Any Text WCAG AA ✓ Pass

Large Text (above 18pt) WCAG AAA ✓ Pass

Any Text WCAG AAA ✓ Pass

If you want to check with other color combinations, try the [Color Contrast Checker](#).

HunterLab 74.4300, 6.6708, 8.0810 Background



This preview shows how black text looks on a background with the HunterLab color 74.4300, 6.6708, 8.0810.



This preview shows how white text looks on a background with the HunterLab color 74.4300, 6.6708,

Color Blindness Simulation

Color vision deficiency is a very complex topic, and I could not describe the different causes any better than Wikipedia does, so if you want to learn more, you should check out their [article about color blindness](#).

Dichromacy



Original Color

74.4300, 6.6708, 8.0810

Protanopia

74.6345, -3.0354, 6.3200

Deuteranopia

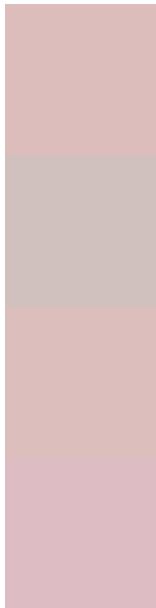
74.5103, 5.4495, 8.1499



Tritanopia

74.4618, 10.5138, 2.0678

Trichromacy



Original Color

74.4300, 6.6708, 8.0810

Protanomaly

74.3716, 0.6228, 6.5436

Deuteranomaly

74.6146, 5.7989, 8.2733

Tritanomaly

74.4859, 8.8130, 4.4820

Monochromacy



Original Color

74.4300, 6.6708, 8.0810

Achromatopsia

75.1473, -4.0097, 4.0829

Achromatomaly

74.8646, -0.5765, 5.7002

CSS Examples

Text

The CSS property to change the color of the text to HunterLab 74.4300, 6.6708, 8.0810 is called "color". The color property can be set on classes, ids or directly on the HTML element.

This example shows how text in the color `rgb(221, 189, 188)` looks like.

```
.text, #text, p{  
    color:rgb(221, 189, 188)  
}
```

If you want to add a text shadow in that color use the text-shadow property, you can generate a text shadow directly with our [CSS Text Shadow Generator](#).

Here you see how black text with a 4 pixel rgb(221, 189, 188) colored shadow looks like.

```
.shadow{ text-shadow: 4px 4px 2px rgb(221, 189, 188) }
```

Border

The CSS property to change the border of an element to HunterLab 74.4300, 6.6708, 8.0810 is called "border". The border property can be set on classes, ids or directly on the HTML element.

This example shows the color as border, it can be applied via the CSS property "border" or "border-color".

```
.border, #border, table{ border:4px solid rgb(221, 189, 188) }
```


If only the border color should be changed use the property `border-color`.

```
.border{ border-color:rgb(221, 189, 188) }
```

If you want to add a box shadow in that color use:

Here you see how a box with a 4 pixel `rgb(221, 189, 188)` colored shadow looks like.

```
.boxshadow{ -moz-box-shadow:4px 4px 4px 4px rgb(221, 189, 188); -webkit-box-shadow:4px 4px 4px 4px rgb(221, 189, 188); box-shadow:4px 4px 4px 4px rgb(221, 189, 188) }
```

Background

The CSS property to change the background color of an element to HunterLab 74.4300, 6.6708, 8.0810 is called "background". The background property can be set on classes, ids or directly on the HTML element.

```
.background, #background, body{  
background: rgb(221, 189, 188) }
```

If only the background color should be changed can be used:

```
.background{ background-color: rgb(221,  
189, 188) }
```

This example shows the color as background, it is applied via the CSS property "background".

To optimize and compress your CSS code, you can use our [online CSS compressor and optimizer](#) based on csstidy. If you want to create a linear or radial gradient as background or border, check our [CSS Gradient Generator](#).

Hey! You found this booklet interesting? Support Converting Colors with the new Membership Option!

The pro membership hides all ads, plus gives you double the colors in the color bucket, and more awesome pro features!

[Learn more, Memberships starting at \\$2.50/m!](#)

**Follow me
on Twitter!**

@ConvertingColor