

Converting Colors

HunterLab(74.4576, 6.4369,
5.6710)

Have a look what the booklet for
HunterLab(74.4576, 6.4369, 5.6710)
contains.

HunterLab(74.3677, 6.7580, 5.7202)	3
<i>Conversions</i>	4
<i>Details</i>	6
<i>Harmonies</i>	12
<i>Previews</i>	24
<i>Color Blindness Simulation</i>	28
<i>CSS Examples</i>	31

Color

**HunterLab(74.3677, 6.7580,
5.7202)**

Conversions

Conversions Part 1

Format	Color
Hex	DBBDC1
RGB	219, 189, 193
RGB Percent	86%, 74%, 76%
CMY	0.1412, 0.2588, 0.2431
CMYK	0.00, 0.14, 0.12, 0.14
HSL	352°, 29%, 80%
HSV	352°, 14%, 86%
XYZ	57.0367, 55.3055, 58.1209
YIQ	198.4260, 16.5960, 7.6040

Conversions

Conversions Part 2

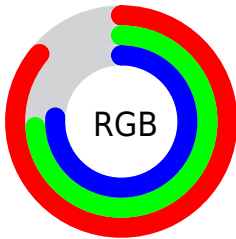
Format	Color
R_{YB}	219, 189, 193
Decimal	14400961
CIE _{Lab}	79.22, 11.32, 1.93
CIE _{LCh}	79, 11.480, 9.677
Yxy	55.3080, 0.3346, 0.3244
Android (android.graphics.Color)	4292591041 (0xFFDBBDC1)
YUV	198.4260, -2.6750, 18.0434
Hunter-Lab	74.3677, 6.7580, 5.7202

Details

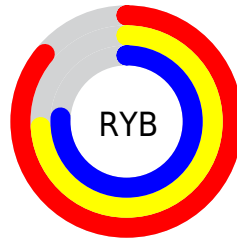
The HunterLab color $74.3677, 6.7580, 5.7202$ is a light color, and the websafe version is hex $FFCCCC$. A complement of this color would be $81.4798, -14.2443, 3.1741$, and the grayscale version is $75.3360, -4.0197, 4.0931$.

A 20% lighter version of the original color is $96.6459, -1.0742, 4.5527$, and $52.3395, 6.7884, 4.2645$ is the 20% darker color. If you saturate the color by 10%, you get $67.6705, 15.2951, 6.8724$, and if you desaturate by 10%, it is $81.4582, -1.5059, 4.8392$.

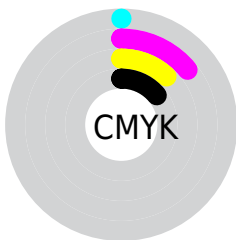
Distribution



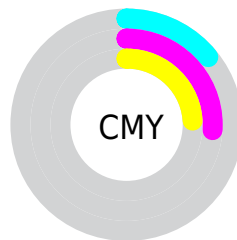
- Red (86%)
- Green (74%)
- Blue (76%)



- Red (86%)
- Yellow (74%)
- Blue (76%)



- Cyan (0%)
- Magenta (14%)
- Yellow (12%)
- Black (14%)



- Cyan (14%)
- Magenta (26%)
- Yellow (24%)

Brightness & Saturation Gradients


These gradients show how the HunterLab color 74.3677, 6.7580, 5.7202 changes by changing the brightness by 10 percent. The first figure shows a shift by +10% for each color and the second figure -10%.


Similar to the brightness gradients but the following saturation gradients show a change of the HunterLab color 74.3677, 6.7580, 5.7202 by changing the saturation by 10% instead.


 74.3677, 6.7580,
5.7202

 74.3677, 6.7580,
5.7202


201.7618, 3.9882,
13.3296

 62.9670, 6.8184,
5.0083


 98.9910, 6.4578,
7.2328

 52.2154, 6.8155,
4.3248


112.1541, 6.2318,
8.0292

 42.1568, 6.7389,
3.6721


125.8538, 5.9592,
8.8516

 32.8426, 6.5781,
3.0511

140.0700, 5.6430,
9.6993

 24.3380, 6.3185,
2.4629

154.7846, 5.2857,
10.5716

 16.7289, 5.9392,
1.9079

169.9810, 4.8896,

 10.1365, 5.4087,

11.4678

1.3850

185.6446, 4.4565,
12.3873

0.0000, INF, NaN

0.0000, NaN, NaN

■ 74.3677, 6.7580,
5.7202

■ 74.3677, 6.7580,
5.7202

■ 67.6705, 15.2951,
6.8724

■ 81.4582, -1.5059,
4.8392

■ 61.4341, 24.0824,
8.3336

■ 88.8795, -9.4995,
4.1850

■ 55.7504, 33.0125,
10.1384

■ 96.5875, -17.2517,
3.7226

■ 50.7271, 41.8529,
12.2945

■ 96.8505, -16.4718,
1.4734

■ 46.4853, 50.1875,

14.7565

■ 43.1424, 57.4044,
17.3956

■ 40.7820, 62.8044,
19.9893

■ 39.4083, 65.8825,
22.2610

■ 38.9227, 66.8865,
23.3670

Harmonies

Analogous

The Analogous color harmony consists of three colors that are next to each other on the color wheel.



74.3694, 6.2196, 0.4644



74.3677, 6.7580, 5.7202



74.3694, 4.3537, 10.1960

Triad

The Triadic color harmony groups three colors that are evenly spaced from another and form a triangle on the color wheel.



74.3694, 6.7558, 5.7215



74.3694, -10.6123, 11.3905



74.3694, -7.6138, -6.0301

Complementary

The Complementary color scheme is a pair of colors which are on the opposite of each other on the color wheel.



74.3677, 6.7580, 5.7202



81.4798, -14.2443, 3.1741

Split Complementary

Split-complementary colors differ from the complementary color scheme. The scheme consists of three colors, the original color and two neighbors of the complement color.



74.3694, -11.9471, -2.6740



74.3677, 6.7580, 5.7202



74.3694, -13.6430, 7.4620

Square

The Square scheme is like the rectangle color scheme, but the four colors are evenly spaced on the color wheel.



74.3694, 6.7558, 5.7215



74.3694, -5.7437, 13.3083



74.3694, -14.1245, 2.3350



74.3694, -2.1839, -6.5809

Rectangle

The Rectangle color scheme consists of four colors that form a rectangle on the color wheel.



74.3677, 6.7580, 5.7202



74.3694, 1.4493, 12.2282



74.3694, -14.1245, 2.3350



74.3694, -9.2426, -5.1816

Sweetspot

The Sweet Spot groups the original color and five complimentary colors.



74.3694, 6.7558, 5.7215



96.4922, -1.4631, 5.7804



74.8060, 9.8973, -6.8494



44.3398, -0.3373, 2.7067

0.0000, NaN, NaN



46.2646, -2.4686, 2.5136

Same Dimension

The Same Dimension uses a secret algorithm to generate beautiful new colors.



74.3694, 6.7558, 5.7215



86.3727, 10.4728, 7.1002



77.4886, 0.4313, 10.9161



36.1658, 1.4962, 2.4852



29.9870, 51.5612, 17.7673



7.6937, 13.3498, 3.6213

Inverse Universe

The Inverse Universe completely reimagines the original color for something new.



74.3694, 6.7558, 5.7215



86.3727, 10.4728, 7.1002



78.1326, -8.0409, -2.8520



36.1658, 1.4962, 2.4852



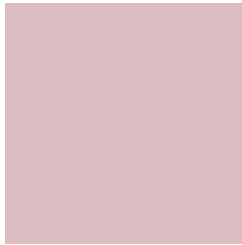
29.9870, 51.5612, 17.7673



7.6937, 13.3498, 3.6213

Previews

White Background



This preview shows how the HunterLab color 74.3677, 6.7580, 5.7202 looks on a white background.

Color Contrast Check

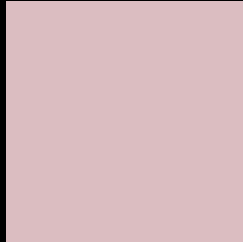
Large Text (above 18pt) WCAG AA × Fail

Any Text WCAG AA × Fail

Large Text (above 18pt) WCAG AAA × Fail

Any Text WCAG AAA × Fail

Black Background



This preview shows how the HunterLab color 74.3677, 6.7580, 5.7202 looks on a black background.

Color Contrast Check

Large Text (above 18pt) WCAG AA ✓ Pass

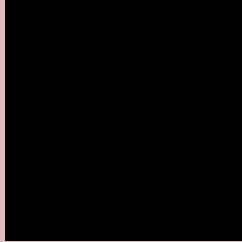
Any Text WCAG AA ✓ Pass

Large Text (above 18pt) WCAG AAA ✓ Pass

Any Text WCAG AAA ✓ Pass

If you want to check with other color combinations, try the [Color Contrast Checker](#).

HunterLab 74.3677, 6.7580, 5.7202 Background



This preview shows how black text looks on a background with the HunterLab color 74.3677, 6.7580, 5.7202.



This preview shows how white text looks on a background with the HunterLab color 74.3677, 6.7580,

Color Blindness Simulation

Color vision deficiency is a very complex topic, and I could not describe the different causes any better than Wikipedia does, so if you want to learn more, you should check out their [article about color blindness](#).

Dichromacy



Original Color

74.3677, 6.7580, 5.7202

Protanopia

74.3914, -2.0230, 3.7040

Deuteranopia

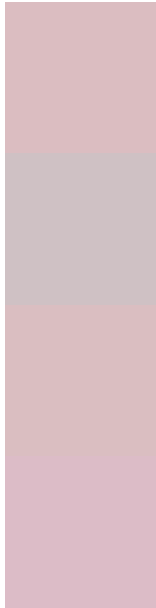
74.4506, 5.5439, 5.7948



Tritanopia

74.4623, 9.1091, 1.5511

Trichromacy



Original Color

74.3677, 6.7580, 5.7202

Protanomaly

74.4250, 1.1060, 4.2755

Deuteranomaly

74.5537, 5.8894, 5.9200

Tritanomaly

74.3677, 8.6073, 2.8978

Monochromacy



Original Color

74.3677, 6.7580, 5.7202

Achromatopsia

75.1473, -4.0097, 4.0829

Achromatomaly

74.9250, -0.2485, 4.8375

CSS Examples

Text

The CSS property to change the color of the text to HunterLab 74.3677, 6.7580, 5.7202 is called "color". The color property can be set on classes, ids or directly on the HTML element.

This example shows how text in the color `rgb(219, 189, 193)` looks like.

```
.text, #text, p{  
    color:rgb(219, 189, 193)  
}
```

If you want to add a text shadow in that color use the text-shadow property, you can generate a text shadow directly with our [CSS Text Shadow Generator](#).

Here you see how black text with a 4 pixel rgb(219, 189, 193) colored shadow looks like.

```
.shadow{ text-shadow: 4px 4px 2px rgb(219, 189, 193) }
```

Border

The CSS property to change the border of an element to HunterLab 74.3677, 6.7580, 5.7202 is called "border".

The border property can be set on classes, ids or directly on the HTML element.

This example shows the color as border, it can be applied via the CSS property "border" or "border-color".

```
.border, #border, table{ border:4px solid rgb(219, 189, 193) }
```


If only the border color should be changed use the property `border-color`.

```
.border{ border-color:rgb(219, 189, 193) }
```

If you want to add a box shadow in that color use:

Here you see how a box with a 4 pixel `rgb(219, 189, 193)` colored shadow looks like.

```
.boxshadow{ -moz-box-shadow:4px 4px 4px  
4px rgb(219, 189, 193); -webkit-box-  
shadow:4px 4px 4px 4px rgb(219, 189, 193);  
box-shadow:4px 4px 4px 4px rgb(219, 189,  
193) }
```

Background

The CSS property to change the background color of an element to HunterLab 74.3677, 6.7580, 5.7202 is called "background". The background property can be set on classes, ids or directly on the HTML element.

```
.background, #background, body{  
background: rgb(219, 189, 193) }
```

If only the background color should be changed can be used:

```
.background{ background-color: rgb(219,  
189, 193) }
```

This example shows the color as background, it is applied via the CSS property "background".

To optimize and compress your CSS code, you can use our [online CSS compressor and optimizer](#) based on csstidy. If you want to create a linear or radial gradient as background or border, check our [CSS Gradient Generator](#).

Hey! You found this booklet interesting? Support Converting Colors with the new Membership Option!

The pro membership hides all ads, plus gives you double the colors in the color bucket, and more awesome pro features!

[Learn more, Memberships starting at \\$2.50/m!](#)

**Follow me
on Twitter!**

@ConvertingColor