

Converting Colors

HunterLab(74.4805, 7.3592,
4.1100)

Have a look what the booklet for
HunterLab(74.4805, 7.3592, 4.1100)
contains.

HunterLab(74.4892, 7.4059, 3.9847)	3
<i>Conversions</i>	4
<i>Details</i>	6
<i>Harmonies</i>	12
<i>Previews</i>	24
<i>Color Blindness Simulation</i>	28
<i>CSS Examples</i>	31

Color

**HunterLab(74.4892, 7.4059,
3.9847)**

Conversions

Conversions Part 1

Format	Color
Hex	DBBDC5
RGB	219, 189, 197
RGB Percent	86%, 74%, 77%
CMY	0.1412, 0.2588, 0.2274
CMYK	0.00, 0.14, 0.10, 0.14
HSL	344°, 29%, 80%
HSV	344°, 14%, 86%
XYZ	57.4890, 55.4864, 60.5031
YIQ	198.8820, 15.3120, 8.8480

Conversions

Conversions Part 2

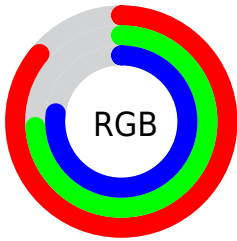
Format	Color
R_{YB}	219, 189, 197
Decimal	14400965
CIE _{Lab}	79.32, 11.98, -0.08
CIE _{LCh}	79, 11.982, 359.626
Yxy	55.4889, 0.3314, 0.3199
Android (android.graphics.Color)	4292591045 (0xFFDBBDC5)
YUV	198.8820, -0.9278, 17.6435
Hunter-Lab	74.4892, 7.4059, 3.9847

Details

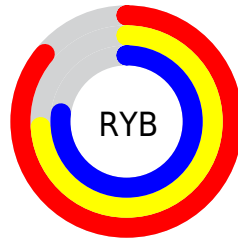
The HunterLab color $74.4892, 7.4059, 3.9847$ is a light color, and the websafe version is hex FFCCCC . A complement of this color would be $81.3550, -14.9435, 4.9533$, and the grayscale version is $75.5232, -4.0297, 4.1033$.

A 20% lighter version of the original color is $96.8094, -0.1864, 2.2242$, and $52.4252, 7.2415, 3.0415$ is the 20% darker color. If you saturate the color by 10%, you get $67.8748, 16.3559, 3.9523$, and if you desaturate by 10%, it is $81.4917, -1.3233, 4.3606$.

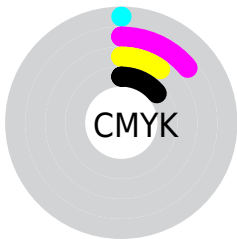
Distribution



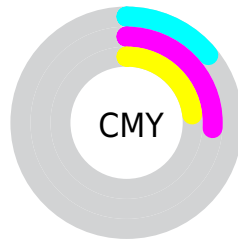
- Red (86%)
- Green (74%)
- Blue (77%)



- Red (86%)
- Yellow (74%)
- Blue (77%)



- Cyan (0%)
- Magenta (14%)
- Yellow (10%)
- Black (14%)





- Cyan (14%)
- Magenta (26%)
- Yellow (23%)

Brightness & Saturation Gradients


These gradients show how the HunterLab color 74.4892, 7.4059, 3.9847 changes by changing the brightness by 10 percent. The first figure shows a shift by +10% for each color and the second figure -10%.


Similar to the brightness gradients but the following saturation gradients show a change of the HunterLab color 74.4892, 7.4059, 3.9847 by changing the saturation by 10% instead.


 74.4892, 7.4059,
3.9847

 74.4892, 7.4059,
3.9847


201.9313, 4.8639,
10.8958

 63.0819, 7.4360,
3.3687


 99.1246, 7.1627,
5.3200

 52.3234, 7.4012,
2.7870

112.2934, 6.9634,
6.0336

 42.2574, 7.2910,
2.2433


125.9986, 6.7167,
6.7765

 32.9352, 7.0945,
1.7404

140.2201, 6.4255,
7.5477

 24.4218, 6.7969,
1.2819

154.9397, 6.0926,
8.3460

 16.8028, 6.3767,
0.8727

170.1410, 5.7200,

 10.1991, 5.8025,

9.1707

0.5197

185.8094, 5.3099,
10.0209

0.0000, INF, NaN

0.0000, NaN, NaN

■ 74.4892, 7.4059,
3.9847

■ 74.4892, 7.4059,
3.9847

■ 67.8748, 16.3559,
3.9523

■ 81.4917, -1.3233,
4.3606

■ 61.7137, 25.4868,
4.3311

■ 88.8212, -9.8216,
5.0154

■ 56.0945, 34.6713,
5.2005

■ 96.4346, -18.1085,
5.9012

■ 51.1204, 43.6564,
6.6318

■ 96.8505, -16.4719,
1.4734

■ 46.9066, 52.0125,

8.6621

■ 43.5648, 59.1283,
11.2533

■ 41.1742, 64.3237,
14.2516

■ 39.7399, 67.1241,
17.3826

■ 39.2040, 67.9272,
19.2159

Harmonies

Analogous

The Analogous color harmony consists of three colors that are next to each other on the color wheel.



74.4909, 5.8027, -1.4623



74.4892, 7.4059, 3.9847



74.4909, 5.8786, 9.0691

Triad

The Triadic color harmony groups three colors that are evenly spaced from another and form a triangle on the color wheel.



74.4909, 7.4037, 3.9860



74.4909, -9.3660, 12.6307



74.4909, -9.4875, -5.6025

Complementary

The Complementary color scheme is a pair of colors which are on the opposite of each other on the color wheel.



74.4892, 7.4059, 3.9847



81.3550, -14.9435, 4.9533

Split Complementary

Split-complementary colors differ from the complementary color scheme. The scheme consists of three colors, the original color and two neighbors of the complement color.



74.4909, -13.3486, -1.3344



74.4892, 7.4059, 3.9847



74.4909, -13.2800, 9.1796

Square

The Square scheme is like the rectangle color scheme, but the four colors are evenly spaced on the color wheel.



74.4909, 7.4037, 3.9860



74.4909, -3.9064, 13.8245



74.4909, -14.7161, 4.1234



74.4909, -4.0509, -7.2487

Rectangle

The Rectangle color scheme consists of four colors that form a rectangle on the color wheel.



74.4892, 7.4059, 3.9847



74.4909, 3.3200, 11.6310



74.4909, -14.7161, 4.1234



74.4909, -11.0067, -4.4117

Sweetspot

The Sweet Spot groups the original color and five complimentary colors.



74.4909, 7.4037, 3.9860



96.5357, -1.2267, 5.1601



74.4050, 8.5740, -7.4058



44.3636, -0.2077, 2.3663

0.0000, NaN, NaN



46.2646, -2.4686, 2.5136

Same Dimension

The Same Dimension uses a secret algorithm to generate beautiful new colors.



74.4909, 7.4037, 3.9860



86.5418, 11.3688, 4.6857



76.2996, 2.4930, 9.6455



36.2053, 1.7090, 1.9207



30.2141, 52.4013, 14.4176



7.7823, 13.6760, 2.3270

Inverse Universe

The Inverse Universe completely reimagines the original color for something new.



74.4909, 7.4037, 3.9860



86.5418, 11.3688, 4.6857



79.3863, -10.0471, -1.3114



36.2053, 1.7090, 1.9207



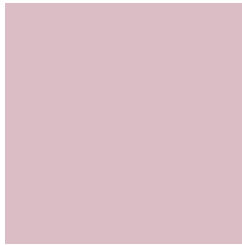
30.2141, 52.4013, 14.4176



7.7823, 13.6760, 2.3270

Previews

White Background



This preview shows how the HunterLab color 74.4892, 7.4059, 3.9847 looks on a white background.

Color Contrast Check

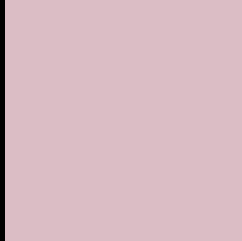
Large Text (above 18pt) WCAG AA × Fail

Any Text WCAG AA × Fail

Large Text (above 18pt) WCAG AAA × Fail

Any Text WCAG AAA × Fail

Black Background



This preview shows how the HunterLab color 74.4892, 7.4059, 3.9847 looks on a black background.

Color Contrast Check

Large Text (above 18pt) WCAG AA ✓ Pass

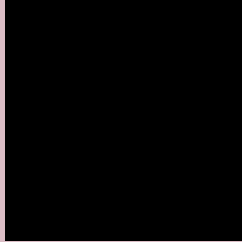
Any Text WCAG AA ✓ Pass

Large Text (above 18pt) WCAG AAA ✓ Pass

Any Text WCAG AAA ✓ Pass

If you want to check with other color combinations, try the [Color Contrast Checker](#).

HunterLab 74.4892, 7.4059, 3.9847 Background



This preview shows how black text looks on a background with the HunterLab color 74.4892, 7.4059, 3.9847.



This preview shows how white text looks on a background with the HunterLab color 74.4892, 7.4059,

3.9847.

Color Blindness Simulation

Color vision deficiency is a very complex topic, and I could not describe the different causes any better than Wikipedia does, so if you want to learn more, you should check out their [article about color blindness](#).

Dichromacy



Original Color

74.4892, 7.4059, 3.9847

Protanopia

74.7255, -2.1699, 2.1635

Deuteranopia

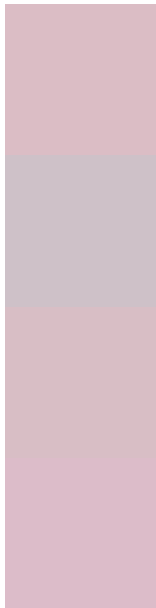
74.3675, 5.5087, 3.8075



Tritanopia

74.4942, 9.2783, 1.0971

Trichromacy



Original Color

74.4892, 7.4059, 3.9847

Protanomaly

74.4526, 1.4479, 2.3875

Deuteranomaly

74.4695, 5.8503, 3.9341

Tritanomaly

74.4306, 8.9409, 2.0026

Monochromacy



Original Color

74.4892, 7.4059, 3.9847

Achromatopsia

75.5728, -4.0324, 4.1060

Achromatomaly

74.9862, 0.0834, 3.9647

CSS Examples

Text

The CSS property to change the color of the text to HunterLab 74.4892, 7.4059, 3.9847 is called "color". The color property can be set on classes, ids or directly on the HTML element.

This example shows how text in the color `rgb(219, 189, 197)` looks like.

```
.text, #text, p{  
    color:rgb(219, 189, 197)  
}
```

If you want to add a text shadow in that color use the text-shadow property, you can generate a text shadow directly with our [CSS Text Shadow Generator](#).

Here you see how black text with a 4 pixel rgb(219, 189, 197) colored shadow looks like.

```
.shadow{ text-shadow: 4px 4px 2px rgb(219, 189, 197) }
```

Border

The CSS property to change the border of an element to HunterLab 74.4892, 7.4059, 3.9847 is called "border".

The border property can be set on classes, ids or directly on the HTML element.

This example shows the color as border, it can be applied via the CSS property "border" or "border-color".

```
.border, #border, table{ border:4px solid rgb(219, 189, 197) }
```


If only the border color should be changed use the property `border-color`.

```
.border{ border-color:rgb(219, 189, 197) }
```

If you want to add a box shadow in that color use:

Here you see how a box with a 4 pixel `rgb(219, 189, 197)` colored shadow looks like.

```
.boxshadow{ -moz-box-shadow:4px 4px 4px  
4px rgb(219, 189, 197); -webkit-box-  
shadow:4px 4px 4px 4px rgb(219, 189, 197);  
box-shadow:4px 4px 4px 4px rgb(219, 189,  
197) }
```

Background

The CSS property to change the background color of an element to HunterLab 74.4892, 7.4059, 3.9847 is called "background". The background property can be set on classes, ids or directly on the HTML element.

```
.background, #background, body{  
background: rgb(219, 189, 197) }
```

If only the background color should be changed can be used:

```
.background{ background-color: rgb(219,  
189, 197) }
```

This example shows the color as background, it is applied via the CSS property "background".

To optimize and compress your CSS code, you can use our [online CSS compressor and optimizer](#) based on csstidy. If you want to create a linear or radial gradient as background or border, check our [CSS Gradient Generator](#).

Hey! You found this booklet interesting? Support Converting Colors with the new Membership Option!

The pro membership hides all ads, plus gives you double the colors in the color bucket, and more awesome pro features!

[Learn more, Memberships starting at \\$2.50/m!](#)

**Follow me
on Twitter!**

@ConvertingColor