

Converting Colors

HunterLab(74.5105, 7.8986,
5.2042)

Have a look what the booklet for
HunterLab(74.5105, 7.8986, 5.2042)
contains.

HunterLab(74.6072, 7.6155, 5.5456)	3
<i>Conversions</i>	4
<i>Details</i>	6
<i>Harmonies</i>	12
<i>Previews</i>	24
<i>Color Blindness Simulation</i>	28
<i>CSS Examples</i>	31

Color

**HunterLab(74.6072, 7.6155,
5.5456)**

Conversions

Conversions Part 1

Format	Color
Hex	DDBDC2
RGB	221, 189, 194
RGB Percent	87%, 74%, 76%
CMY	0.1333, 0.2588, 0.2392
CMYK	0.00, 0.14, 0.12, 0.13
HSL	351°, 32%, 80%
HSV	351°, 14%, 87%
XYZ	57.7540, 55.6623, 58.7388
YIQ	199.1380, 17.4670, 8.3390

Conversions

Conversions Part 2

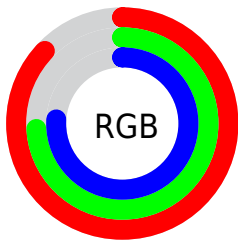
Format	Color
RYB	221, 189, 194
Decimal	14532034
CIELab	79.42, 12.20, 1.71
CIELCh	79, 12.316, 7.978
Yxy	55.6648, 0.3355, 0.3233
Android (android.graphics.Color)	4292722114 (0xFFDDBDC2)
YUV	199.1380, -2.5330, 19.1730
Hunter-Lab	74.6072, 7.6155, 5.5456

Details

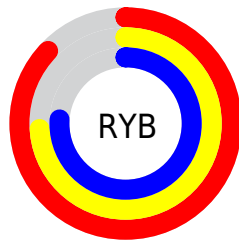
The HunterLab color **74.6072, 7.6155, 5.5456** is a light color, and the websafe version is hex **FFCCCC**. A complement of this color would be **82.1529, -15.0532, 3.4703**, and the grayscale version is **75.6381, -4.0359, 4.1096**.

A 20% lighter version of the original color is **96.6783, -0.8983, 4.0912**, and **52.5440, 7.4610, 4.5117** is the 20% darker color. If you saturate the color by 10%, you get **67.8852, 16.3355, 6.5357**, and if you desaturate by 10%, it is **81.7310, -0.8394, 4.8498**.

Distribution



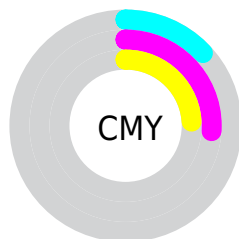
- Red (87%)
- Green (74%)
- Blue (76%)



- Red (87%)
- Yellow (74%)
- Blue (76%)



- Cyan (0%)
- Magenta (14%)
- Yellow (12%)
- Black (13%)



- Cyan (13%)
- Magenta (26%)
- Yellow (24%)

Brightness & Saturation Gradients


These gradients show how the HunterLab color 74.6072, 7.6155, 5.5456 changes by changing the brightness by 10 percent. The first figure shows a shift by +10% for each color and the second figure -10%.

Similar to the brightness gradients but the following saturation gradients show a change of the HunterLab color 74.6072, 7.6155, 5.5456 by changing the saturation by 10% instead.


 74.6072, 7.6155,
5.5456

 74.6072, 7.6155,
5.5456


202.0958, 5.1441,
13.0822

 63.1936, 7.6362,
4.8438


 99.2544, 7.3898,
7.0396

 52.4283, 7.5916,
4.1710


112.4287, 7.1989,
7.8274

 42.3551, 7.4711,
3.5298

126.1392, 6.9602,
8.6415

 33.0251, 7.2638,
2.9214

140.3658, 6.6768,
9.4812

 24.5032, 6.9547,
2.3471

155.0903, 6.3513,
10.3457

 16.8747, 6.5224,
1.8078

170.2964, 5.9861,

 10.2599, 5.9354,

11.2345

1.3035

185.9695, 5.5831,
12.1468

0.0000, INF, NaN

0.0000, NaN, NaN

■ 74.6072, 7.6155,
5.5456

■ 74.6072, 7.6155,
5.5456

■ 67.8852, 16.3355,
6.5357

■ 81.7310, -0.8394,
4.8498

■ 61.6342, 25.2897,
7.8643

■ 89.1925, -9.0273,
4.3989

■ 55.9479, 34.3579,
9.5738

■ 96.8459, -16.8201,
4.0374

■ 50.9360, 43.2882,
11.6808

■ 97.0115, -15.8936,
1.6789

■ 46.7203, 51.6415,

14.1484

■ 43.4175, 58.7855,
16.8532

■ 41.1070, 64.0204,
19.5712

■ 39.7847, 66.8741,
22.0151

■ 39.3583, 67.7032,
23.0996

Harmonies

Analogous

The Analogous color harmony consists of three colors that are next to each other on the color wheel.



74.6089, 6.8517, -0.1097



74.6072, 7.6155, 5.5456



74.6089, 5.1915, 10.4155

Triad

The Triadic color harmony groups three colors that are evenly spaced from another and form a triangle on the color wheel.



74.6089, 7.6132, 5.5469



74.6089, -10.8540, 12.0944



74.6089, -8.2010, -6.6785

Complementary

The Complementary color scheme is a pair of colors which are on the opposite of each other on the color wheel.



74.6072, 7.6155, 5.5456



82.1529, -15.0532, 3.4703

Split Complementary

Split-complementary colors differ from the complementary color scheme. The scheme consists of three colors, the original color and two neighbors of the complement color.



74.6089, -12.7382, -2.9064



74.6072, 7.6155, 5.5456



74.6089, -14.2364, 8.0044

Square

The Square scheme is like the rectangle color scheme, but the four colors are evenly spaced on the color wheel.



74.6089, 7.6132, 5.5469



74.6089, -5.5565, 13.9989



74.6089, -14.9152, 2.5443



74.6089, -2.4002, -7.4648

Rectangle

The Rectangle color scheme consists of four colors that form a rectangle on the color wheel.



74.6072, 7.6155, 5.5456



74.6089, 2.1408, 12.6624



74.6089, -14.9152, 2.5443



74.6089, -9.9192, -5.7043

Sweetspot

The Sweet Spot groups the original color and five complimentary colors.



74.6089, 7.6132, 5.5469



96.4997, -1.4226, 5.6740



74.9442, 10.4938, -7.7544



44.3439, -0.3151, 2.6484

0.0000, NaN, NaN



46.2646, -2.4686, 2.5136

Same Dimension

The Same Dimension uses a secret algorithm to generate beautiful new colors.



74.6089, 7.6132, 5.5469



85.5898, 11.6502, 6.7966



77.5904, 1.2899, 11.0423



36.1725, 1.5326, 2.3887



30.0156, 51.6675, 17.3428



7.7086, 13.4050, 3.4017

Inverse Universe

The Inverse Universe completely reimagines the original color for something new.



74.6089, 7.6132, 5.5469



85.5898, 11.6502, 6.7966



78.9298, -8.8406, -2.9043



36.1725, 1.5326, 2.3887



30.0156, 51.6675, 17.3428



7.7086, 13.4050, 3.4017

Previews

White Background



This preview shows how the HunterLab color 74.6072, 7.6155, 5.5456 looks on a white background.

Color Contrast Check

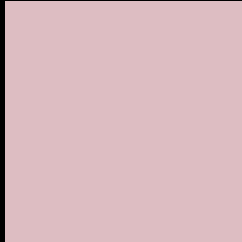
Large Text (above 18pt) WCAG AA × Fail

Any Text WCAG AA × Fail

Large Text (above 18pt) WCAG AAA × Fail

Any Text WCAG AAA × Fail

Black Background



This preview shows how the HunterLab color 74.6072, 7.6155, 5.5456 looks on a black background.

Color Contrast Check

Large Text (above 18pt) WCAG AA ✓ Pass

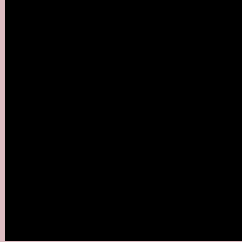
Any Text WCAG AA ✓ Pass

Large Text (above 18pt) WCAG AAA ✓ Pass

Any Text WCAG AAA ✓ Pass

If you want to check with other color combinations, try the [Color Contrast Checker](#).

HunterLab 74.6072, 7.6155, 5.5456 Background



This preview shows how black text looks on a background with the HunterLab color 74.6072, 7.6155, 5.5456.



This preview shows how white text looks on a background with the HunterLab color 74.6072, 7.6155,

Color Blindness Simulation

Color vision deficiency is a very complex topic, and I could not describe the different causes any better than Wikipedia does, so if you want to learn more, you should check out their [article about color blindness](#).

Dichromacy



Original Color

74.6072, 7.6155, 5.5456

Protanopia

74.7238, -2.3630, 3.6119

Deuteranopia

74.7719, 5.1841, 5.6938



Tritanopia

74.6728, 9.8034, 1.8184

Trichromacy



Original Color

74.6072, 7.6155, 5.5456

Protanomaly

74.5527, 1.6023, 3.9579

Deuteranomaly

74.5838, 6.0499, 5.4909

Tritanomaly

74.5785, 9.3039, 3.1617

Monochromacy



Original Color

74.6072, 7.6155, 5.5456

Achromatopsia

75.5728, -4.0324, 4.1060

Achromatomaly

75.0512, 0.2447, 4.5204

CSS Examples

Text

The CSS property to change the color of the text to HunterLab 74.6072, 7.6155, 5.5456 is called "color". The color property can be set on classes, ids or directly on the HTML element.

This example shows how text in the color `rgb(221, 189, 194)` looks like.

```
.text, #text, p{  
    color:rgb(221, 189, 194)  
}
```

If you want to add a text shadow in that color use the text-shadow property, you can generate a text shadow directly with our [CSS Text Shadow Generator](#).

Here you see how black text with a 4 pixel rgb(221, 189, 194) colored shadow looks like.

```
.shadow{ text-shadow: 4px 4px 2px rgb(221, 189, 194) }
```

Border

The CSS property to change the border of an element to HunterLab 74.6072, 7.6155, 5.5456 is called "border".

The border property can be set on classes, ids or directly on the HTML element.

This example shows the color as border, it can be applied via the CSS property "border" or "border-color".

```
.border, #border, table{ border:4px solid rgb(221, 189, 194) }
```


If only the border color should be changed use the property border-color.

```
.border{ border-color:rgb(221, 189, 194) }
```

If you want to add a box shadow in that color use:

Here you see how a box with a 4 pixel rgb(221, 189, 194) colored shadow looks like.

```
.boxshadow{ -moz-box-shadow:4px 4px 4px  
4px rgb(221, 189, 194); -webkit-box-  
shadow:4px 4px 4px 4px rgb(221, 189, 194);  
box-shadow:4px 4px 4px 4px rgb(221, 189,  
194) }
```

Background

The CSS property to change the background color of an element to HunterLab 74.6072, 7.6155, 5.5456 is called "background". The background property can be set on classes, ids or directly on the HTML element.

```
.background, #background, body{  
background: rgb(221, 189, 194) }
```

If only the background color should be changed can be used:

```
.background{ background-color: rgb(221,  
189, 194) }
```

This example shows the color as background, it is applied via the CSS property "background".

To optimize and compress your CSS code, you can use our [online CSS compressor and optimizer](#) based on csstidy. If you want to create a linear or radial gradient as background or border, check our [CSS Gradient Generator](#).

Hey! You found this booklet interesting? Support Converting Colors with the new Membership Option!

The pro membership hides all ads, plus gives you double the colors in the color bucket, and more awesome pro features!

[Learn more, Memberships starting at \\$2.50/m!](#)

**Follow me
on Twitter!**

@ConvertingColor