

Converting Colors

HunterLab(74.6204, 6.1239,
12.2192)

Have a look what the booklet for
HunterLab(74.6204, 6.1239,
12.2192) contains.

HunterLab(74.4964, 6.3874, 12.0737)	3
<i>Conversions</i>	4
<i>Details</i>	6
<i>Harmonies</i>	12
<i>Previews</i>	24
<i>Color Blindness Simulation</i>	28
<i>CSS Examples</i>	31

Color

**HunterLab(74.4964, 6.3874,
12.0737)**

Conversions

Conversions Part 1

Format	Color
Hex	E0BDB3
RGB	224, 189, 179
RGB Percent	88%, 74%, 70%
CMY	0.1216, 0.2588, 0.2980
CMYK	0.00, 0.16, 0.20, 0.12
HSL	13°, 42%, 79%
HSV	13°, 20%, 88%
XYZ	57.0747, 55.4971, 50.3517
YIQ	198.3250, 24.0700, 4.3100

Conversions

Conversions Part 2

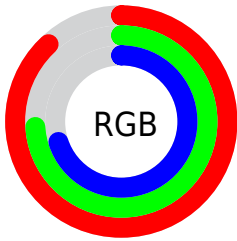
Format	Color
RYB	224, 192, 179
Decimal	14728627
CIELab	79.33, 10.94, 9.70
CIElCh	79, 14.617, 41.559
Yxy	55.4997, 0.3503, 0.3406
Android (android.graphics.Color)	4292918707 (0xFFE0BDB3)
YUV	198.3250, -9.5272, 22.5170
Hunter-Lab	74.4964, 6.3874, 12.0737

Details

The HunterLab color **74.4964, 6.3874, 12.0737** is a light color, and the websafe version is hex **FFCCCC**. A complement of this color would be **79.4085, -12.8795, -3.9488**, and the grayscale version is **75.3190, -4.0188, 4.0922**.

A 20% lighter version of the original color is **96.2097, -3.4513, 10.7873**, and **52.3827, 6.1917, 10.0450** is the 20% darker color. If you saturate the color by 10%, you get **69.0040, 12.3759, 15.4819**, and if you desaturate by 10%, it is **80.2690, 0.7486, 8.4753**.

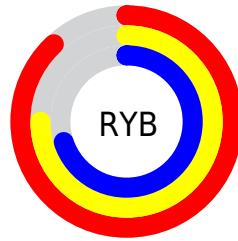
Distribution



Red (88%)

Green (74%)

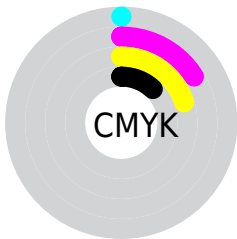
Blue (70%)



Red (88%)

Yellow (75%)

Blue (70%)

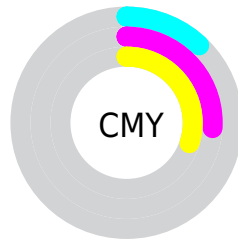


Cyan (0%)

Magenta (16%)

Yellow (20%)

Black (12%)



Cyan (12%)

Magenta (26%)

Yellow (30%)

Brightness & Saturation Gradients

These gradients show how the HunterLab color 74.4964, 6.3874, 12.0737 changes by changing the brightness by 10 percent. The first figure shows a shift by +10% for each color and the second figure -10%.

Similar to the brightness gradients but the following saturation gradients show a change of the HunterLab color 74.4964, 6.3874, 12.0737 by changing the saturation by 10% instead.

 74.4964, 6.3874,
12.0737

 74.4964, 6.3874,
12.0737


201.9414, 3.4804,
22.5041

 63.0887, 6.4660,
10.9682

 99.1326, 6.0526,
14.3094

 52.3298, 6.4825,
9.8642


112.3017, 5.8103,
15.4414

 42.2634, 6.4266,
8.7578


126.0072, 5.5221,
16.5851

 32.9407, 6.2878,
7.6410

140.2290, 5.1909,
17.7415

 24.4268, 6.0519,
6.5011

154.9489, 4.8191,
18.9111

 16.8072, 5.6984,
5.3156

170.1506, 4.4088,

 10.2028, 5.1961,

20.0945

4.5473

185.8192, 3.9620,
21.2921

0.0000, INF, NaN

0.0000, NaN, NaN

■ 74.4964, 6.3874,
12.0737

■ 74.4964, 6.3874,
12.0737

■ 69.0040, 12.3759,
15.4819

■ 80.2690, 0.7486,
8.4753

■ 63.8279, 18.7356,
18.6392

■ 86.2826, -4.5609,
4.7247

■ 59.0184, 25.4507,
21.4708

■ 92.5104, -9.5770,
0.8534

■ 54.6320, 32.4607,
23.8791

■ 97.2560, -15.0171,
1.9903

■ 50.7313, 39.6320,

25.7479

■ 47.3813, 46.7333,
26.9578

■ 44.6408, 53.4253,
27.4211

■ 42.5575, 59.2085,
27.2603

Harmonies

Analogous

The Analogous color harmony consists of three colors that are next to each other on the color wheel.



74.4981, 9.7016, 6.5807



74.4964, 6.3874, 12.0737



74.4981, 0.3359, 15.2293

Triad

The Triadic color harmony groups three colors that are evenly spaced from another and form a triangle on the color wheel.



74.4981, 6.3849, 12.0749



74.4981, -16.3478, 8.0008



74.4981, -1.2569, -9.6428

Complementary

The Complementary color scheme is a pair of colors which are on the opposite of each other on the color wheel.



74.4964, 6.3874, 12.0737



79.4085, -12.8795, -3.9488

Split Complementary

Split-complementary colors differ from the complementary color scheme. The scheme consists of three colors, the original color and two neighbors of the complement color.



74.4981, -8.1979, -9.1729



74.4964, 6.3874, 12.0737



74.4981, -16.7386, 1.4380

Square

The Square scheme is like the rectangle color scheme, but the four colors are evenly spaced on the color wheel.



74.4981, 6.3849, 12.0749



74.4981, -12.7176, 13.0315



74.4981, -13.8057, -4.9690



74.4981, 5.1819, -6.1991

Rectangle

The Rectangle color scheme consists of four colors that form a rectangle on the color wheel.



74.4964, 6.3874, 12.0737



74.4981, -4.3457, 15.7750



74.4981, -13.8057, -4.9690



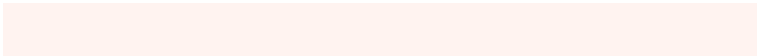
74.4981, -3.6117, -9.9452

Sweetspot

The Sweet Spot groups the original color and five complimentary colors.



74.4981, 6.3849, 12.0749



95.7577, -1.6643, 8.0779



72.7709, 17.4475, -6.8233



44.0909, -0.5814, 3.8689

0.0000, NaN, NaN



46.2646, -2.4686, 2.5136

Same Dimension

The Same Dimension uses a secret algorithm to generate beautiful new colors.



74.4981, 6.3849, 12.0749



83.6472, 10.1785, 15.6277



81.1266, -5.0403, 18.7326



37.6726, 0.1857, 3.8482



32.6848, 44.5039, 20.9194



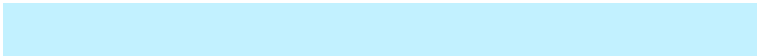
9.3461, 9.5674, 5.9265

Inverse Universe

The Inverse Universe completely reimagines the original color for something new.



79.4085, -12.8795, -3.9488



90.4473, -16.5463, -6.5737



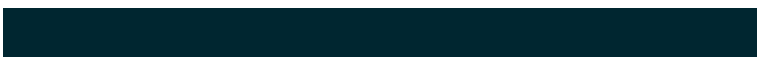
72.4954, -1.6864, -13.0337



38.7663, -4.0936, 0.2818



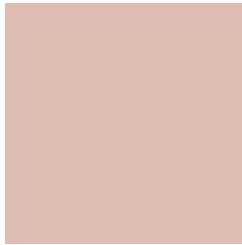
45.8002, -14.8559, -25.1768



12.5814, -4.6272, -5.7367

Previews

White Background



This preview shows how the HunterLab color 74.4964, 6.3874, 12.0737 looks on a white background.

Color Contrast Check

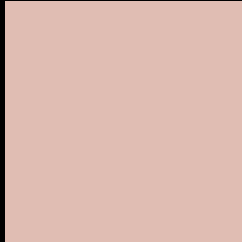
Large Text (above 18pt) WCAG AA × Fail

Any Text WCAG AA × Fail

Large Text (above 18pt) WCAG AAA × Fail

Any Text WCAG AAA × Fail

Black Background



This preview shows how the HunterLab color 74.4964, 6.3874, 12.0737 looks on a black background.

Color Contrast Check

Large Text (above 18pt) WCAG AA ✓ Pass

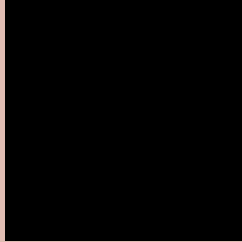
Any Text WCAG AA ✓ Pass

Large Text (above 18pt) WCAG AAA ✓ Pass

Any Text WCAG AAA ✓ Pass

If you want to check with other color combinations, try the [Color Contrast Checker](#).

HunterLab 74.4964, 6.3874, 12.0737 Background



This preview shows how black text looks on a background with the HunterLab color 74.4964, 6.3874, 12.0737.



This preview shows how white text looks on a background with the HunterLab color 74.4964, 6.3874,

Color Blindness Simulation

Color vision deficiency is a very complex topic, and I could not describe the different causes any better than Wikipedia does, so if you want to learn more, you should check out their [article about color blindness](#).

Dichromacy



Original Color

74.4964, 6.3874, 12.0737

Protanopia

74.5622, -3.8049, 10.2547

Deuteranopia

74.5729, 5.1549, 12.1341



Tritanopia

74.5780, 12.2893, 2.7278

Trichromacy



Original Color

74.4964, 6.3874, 12.0737

Protanomaly

74.4085, 0.2323, 10.5903

Deuteranomaly

74.6790, 5.5107, 12.2539

Tritanomaly

74.5085, 10.1150, 6.4056

Monochromacy



Original Color

74.4964, 6.3874, 12.0737

Achromatopsia

75.1473, -4.0097, 4.0829

Achromatomaly

74.8714, -0.7315, 7.0901

CSS Examples

Text

The CSS property to change the color of the text to HunterLab 74.4964, 6.3874, 12.0737 is called "color". The color property can be set on classes, ids or directly on the HTML element.

This example shows how text in the color `rgb(224, 189, 179)` looks like.

```
.text, #text, p{  
    color:rgb(224, 189, 179)  
}
```

If you want to add a text shadow in that color use the text-shadow property, you can generate a text shadow directly with our [CSS Text Shadow Generator](#).

Here you see how black text with a 4 pixel rgb(224, 189, 179) colored shadow looks like.

```
.shadow{ text-shadow: 4px 4px 2px rgb(224, 189, 179) }
```

Border

The CSS property to change the border of an element to HunterLab 74.4964, 6.3874, 12.0737 is called "border". The border property can be set on classes, ids or directly on the HTML element.

This example shows the color as border, it can be applied via the CSS property "border" or "border-color".

```
.border, #border, table{ border:4px solid rgb(224, 189, 179) }
```


If only the border color should be changed use the property `border-color`.

```
.border{ border-color:rgb(224, 189, 179) }
```

If you want to add a box shadow in that color use:

Here you see how a box with a 4 pixel `rgb(224, 189, 179)` colored shadow looks like.

```
.boxshadow{ -moz-box-shadow:4px 4px 4px  
4px rgb(224, 189, 179); -webkit-box-  
shadow:4px 4px 4px 4px rgb(224, 189, 179);  
box-shadow:4px 4px 4px 4px rgb(224, 189,  
179) }
```

Background

The CSS property to change the background color of an element to HunterLab 74.4964, 6.3874, 12.0737 is called "background". The background property can be set on classes, ids or directly on the HTML element.

```
.background, #background, body{  
background: rgb(224, 189, 179) }
```

If only the background color should be changed can be used:

```
.background{ background-color: rgb(224,  
189, 179) }
```

This example shows the color as background, it is applied via the CSS property "background".

To optimize and compress your CSS code, you can use our [online CSS compressor and optimizer](#) based on csstidy. If you want to create a linear or radial gradient as background or border, check our [CSS Gradient Generator](#).

Hey! You found this booklet interesting? Support Converting Colors with the new Membership Option!

The pro membership hides all ads, plus gives you double the colors in the color bucket, and more awesome pro features!

[Learn more, Memberships starting at \\$2.50/m!](#)

**Follow me
on Twitter!**

@ConvertingColor