

Converting Colors

HunterLab(74.6999, 1.4559,
8.1136)

Have a look what the booklet for
HunterLab(74.6999, 1.4559, 8.1136)
contains.

HunterLab(74.6779, 1.4918, 8.2688)	3
<i>Conversions</i>	4
<i>Details</i>	6
<i>Harmonies</i>	12
<i>Previews</i>	24
<i>Color Blindness Simulation</i>	28
<i>CSS Examples</i>	31

Color

**HunterLab(74.6779, 1.4918,
8.2688)**

Conversions

Conversions Part 1

Format	Color
Hex	D4C1BC
RGB	212, 193, 188
RGB Percent	83%, 76%, 74%
CMY	0.1686, 0.2431, 0.2627
CMYK	0.00, 0.09, 0.11, 0.17
HSL	13°, 22%, 78%
HSV	13°, 11%, 83%
XYZ	55.2985, 55.7679, 55.4268
YIQ	198.1110, 12.9290, 2.4730

Conversions

Conversions Part 2

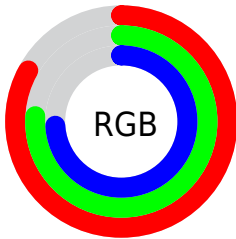
Format	Color
R _Y B	212, 194, 188
Decimal	13943228
CIE Lab	79.48, 5.85, 4.93
CIE LCh	79, 7.651, 40.145
Yxy	55.7704, 0.3321, 0.3350
Android (android.graphics.Color)	4292133308 (0xFFD4C1BC)
YUV	198.1110, -4.9847, 12.1807
Hunter-Lab	74.6779, 1.4918, 8.2688

Details

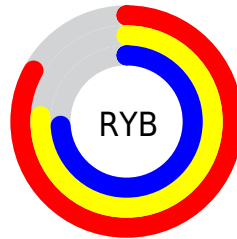
The HunterLab color $74.6779, 1.4918, 8.2688$ is a light color, and the websafe version is hex `CCCCCC`. A complement of this color would be $77.5045, -9.1115, -0.0512$, and the grayscale version is $75.2126, -4.0132, 4.0864$.

A 20% lighter version of the original color is $97.7461, -4.0629, 8.2444$, and $52.6056, 1.7813, 6.6123$ is the 20% darker color. If you saturate the color by 10%, you get $69.2235, 6.9585, 11.5463$, and if you desaturate by 10%, it is $80.3728, -3.6697, 4.8660$.

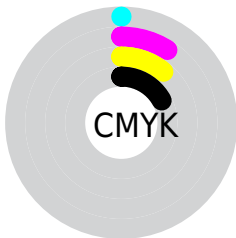
Distribution



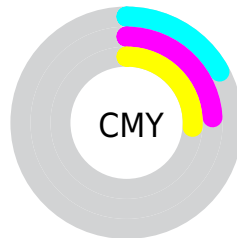
- Red (83%)
- Green (76%)
- Blue (74%)



- Red (83%)
- Yellow (76%)
- Blue (74%)



- Cyan (0%)
- Magenta (9%)
- Yellow (11%)
- Black (17%)



- Cyan (17%)
- Magenta (24%)
- Yellow (26%)

Brightness & Saturation Gradients

These gradients show how the HunterLab color 74.6779, 1.4918, 8.2688 changes by changing the brightness by 10 percent. The first figure shows a shift by +10% for each color and the second figure -10%.

Similar to the brightness gradients but the following saturation gradients show a change of the HunterLab color 74.6779, 1.4918, 8.2688 by changing the saturation by 10% instead.

■ 74.6779, 1.4918,
8.2688

■ 74.6779, 1.4918,
8.2688

202.1943, -3.2161,
16.9532

■ 63.2604, 1.8134,
7.4081

■ 99.3321, 0.7047,
10.0556

■ 52.4912, 2.0856,
6.5661

112.5097, 0.2499,
10.9797

■ 42.4136, 2.3010,
5.7429

126.2234, -0.2432,
11.9245

■ 33.0790, 2.4520,
4.9365

140.4530, -0.7722,
12.8899

■ 24.5519, 2.5288,
4.1431

155.1805, -1.3356,
13.8757

■ 16.9177, 2.5165,
3.3553

170.3895, -1.9316,

■ 10.2964, 2.3916,

14.8817

2.6111

186.0653, -2.5588,
15.9076

0.0000, INF, NaN

0.0000, NaN, NaN

■ 74.6779, 1.4918,
8.2688

■ 74.6779, 1.4918,
8.2688

■ 69.2235, 6.9585,
11.5463

■ 80.3728, -3.6697,
4.8660

■ 64.0389, 12.7611,
14.6566

■ 86.2750, -8.5505,
1.3616

■ 59.1668, 18.9061,
17.5472

■ 92.3626, -13.1848,
-2.2239

■ 54.6560, 25.3728,
20.1455

■ 96.3002, -18.4564,
0.7686

■ 50.5629, 32.0892,

22.3577

■ 46.9496, 38.9073,
24.0714

■ 43.8794, 45.5798,
25.1716

■ 41.4077, 51.7565,
25.5771

■ 39.7662, 56.3623,
25.4905

Harmonies

Analogous

The Analogous color harmony consists of three colors that are next to each other on the color wheel.



74.6796, 3.0947, 5.2392



74.6779, 1.4918, 8.2688



74.6796, -1.5736, 10.1147

Triad

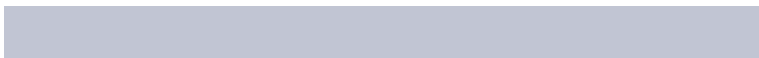
The Triadic color harmony groups three colors that are evenly spaced from another and form a triangle on the color wheel.



74.6796, 1.4897, 8.2700



74.6796, -10.5190, 6.3121



74.6796, -2.7401, -2.8588

Complementary

The Complementary color scheme is a pair of colors which are on the opposite of each other on the color wheel.



74.6779, 1.4918, 8.2688



77.5045, -9.1115, -0.0512

Split Complementary

Split-complementary colors differ from the complementary color scheme. The scheme consists of three colors, the original color and two neighbors of the complement color.



74.6796, -6.3735, -2.5373



74.6779, 1.4918, 8.2688



74.6796, -10.8176, 2.8714

Square

The Square scheme is like the rectangle color scheme, but the four colors are evenly spaced on the color wheel.



74.6796, 1.4897, 8.2700



74.6796, -8.4898, 9.0227



74.6796, -9.3136, -0.3997



74.6796, 0.6216, -1.2578

Rectangle

The Rectangle color scheme consists of four colors that form a rectangle on the color wheel.



74.6779, 1.4918, 8.2688



74.6796, -4.0066, 10.4790



74.6796, -9.3136, -0.3997



74.6796, -3.9709, -2.9737

Sweetspot

The Sweet Spot groups the original color and five complimentary colors.



74.6796, 1.4897, 8.2700



97.8337, -3.4600, 6.7245



73.8100, 7.2826, -1.9135



44.9964, -1.3663, 3.2698

0.0000, NaN, NaN



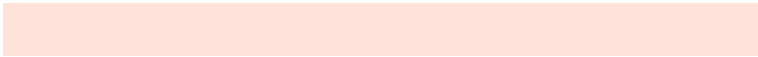
46.2646, -2.4686, 2.5136

Same Dimension

The Same Dimension uses a secret algorithm to generate beautiful new colors.



74.6796, 1.4897, 8.2700



90.1044, 3.7015, 11.3516



78.2277, -4.5249, 12.0643



35.8275, 0.2318, 3.6113



31.4325, 43.6993, 20.1336



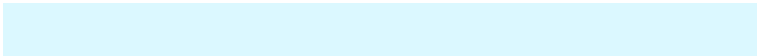
8.4699, 8.5516, 5.3688

Inverse Universe

The Inverse Universe completely reimagines the original color for something new.



77.5045, -9.1115, -0.0512



94.4401, -12.5793, -1.4219



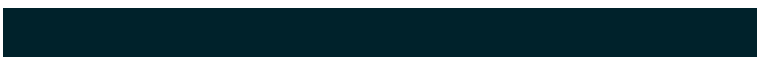
73.8686, -3.1709, -4.5330



36.9428, -3.9523, 0.3263



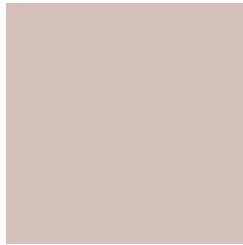
45.0850, -15.4235, -23.0574



11.5714, -4.4617, -4.8317

Previews

White Background



This preview shows how the HunterLab color 74.6779, 1.4918, 8.2688 looks on a white background.

Color Contrast Check

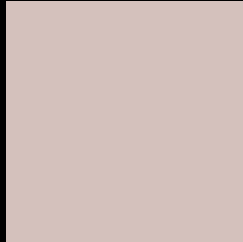
Large Text (above 18pt) WCAG AA × Fail

Any Text WCAG AA × Fail

Large Text (above 18pt) WCAG AAA × Fail

Any Text WCAG AAA × Fail

Black Background



This preview shows how the HunterLab color 74.6779, 1.4918, 8.2688 looks on a black background.

Color Contrast Check

Large Text (above 18pt) WCAG AA ✓ Pass

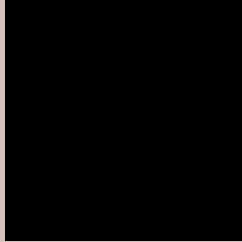
Any Text WCAG AA ✓ Pass

Large Text (above 18pt) WCAG AAA ✓ Pass

Any Text WCAG AAA ✓ Pass

If you want to check with other color combinations, try the [Color Contrast Checker](#).

HunterLab 74.6779, 1.4918, 8.2688 Background



This preview shows how black text looks on a background with the HunterLab color 74.6779, 1.4918, 8.2688.



This preview shows how white text looks on a background with the HunterLab color 74.6779, 1.4918,

8.2688.

Color Blindness Simulation

Color vision deficiency is a very complex topic, and I could not describe the different causes any better than Wikipedia does, so if you want to learn more, you should check out their [article about color blindness](#).

Dichromacy



Original Color

74.6779, 1.4918, 8.2688

Protanopia

74.6687, -3.0350, 7.2755

Deuteranopia

74.5393, 5.6048, 7.7342



Tritanopia

74.5190, 6.5213, 0.0784

Trichromacy



Original Color

74.6779, 1.4918, 8.2688

Protanomaly

74.7169, -1.3797, 7.8123

Deuteranomaly

74.5216, 4.0463, 7.6868

Tritanomaly

74.5193, 4.6416, 3.0094

Monochromacy



Original Color

74.6779, 1.4918, 8.2688

Achromatopsia

75.1473, -4.0097, 4.0829

Achromatomaly

74.8808, -2.0640, 5.6929

CSS Examples

Text

The CSS property to change the color of the text to HunterLab 74.6779, 1.4918, 8.2688 is called "color". The color property can be set on classes, ids or directly on the HTML element.

This example shows how text in the color `rgb(212, 193, 188)` looks like.

```
.text, #text, p{  
    color:rgb(212, 193, 188)  
}
```

If you want to add a text shadow in that color use the text-shadow property, you can generate a text shadow directly with our [CSS Text Shadow Generator](#).

Here you see how black text with a 4 pixel rgb(212, 193, 188) colored shadow looks like.

```
.shadow{ text-shadow: 4px 4px 2px rgb(212, 193, 188) }
```

Border

The CSS property to change the border of an element to HunterLab 74.6779, 1.4918, 8.2688 is called "border". The border property can be set on classes, ids or directly on the HTML element.

This example shows the color as border, it can be applied via the CSS property "border" or "border-color".

```
.border, #border, table{ border:4px solid rgb(212, 193, 188) }
```


If only the border color should be changed use the property `border-color`.

```
.border{ border-color:rgb(212, 193, 188) }
```

If you want to add a box shadow in that color use:

Here you see how a box with a 4 pixel `rgb(212, 193, 188)` colored shadow looks like.

```
.boxshadow{ -moz-box-shadow:4px 4px 4px  
4px rgb(212, 193, 188); -webkit-box-  
shadow:4px 4px 4px 4px rgb(212, 193, 188);  
box-shadow:4px 4px 4px 4px rgb(212, 193,  
188) }
```

Background

The CSS property to change the background color of an element to HunterLab 74.6779, 1.4918, 8.2688 is called "background". The background property can be set on classes, ids or directly on the HTML element.

```
.background, #background, body{  
background: rgb(212, 193, 188) }
```

If only the background color should be changed can be used:

```
.background{ background-color: rgb(212,  
193, 188) }
```

This example shows the color as background, it is applied via the CSS property "background".

To optimize and compress your CSS code, you can use our [online CSS compressor and optimizer](#) based on csstidy. If you want to create a linear or radial gradient as background or border, check our [CSS Gradient Generator](#).

Hey! You found this booklet interesting? Support Converting Colors with the new Membership Option!

The pro membership hides all ads, plus gives you double the colors in the color bucket, and more awesome pro features!

[Learn more, Memberships starting at \\$2.50/m!](#)

**Follow me
on Twitter!**

@ConvertingColor