

Converting Colors

HunterLab(74.7016, -1.5160,
9.9696)

Have a look what the booklet for
HunterLab(74.7016, -1.5160, 9.9696)
contains.

HunterLab(74.7668, -1.4932, 10.0844)	3
<i>Conversions</i>	4
<i>Details</i>	6
<i>Harmonies</i>	12
<i>Previews</i>	24
<i>Color Blindness Simulation</i>	28
<i>CSS Examples</i>	31

Color

**HunterLab(74.7668, -1.4932,
10.0844)**

Conversions

Conversions Part 1

Format	Color
Hex	D0C3B8
RGB	208, 195, 184
RGB Percent	82%, 76%, 72%
CMY	0.1843, 0.2353, 0.2784
CMYK	0.00, 0.06, 0.12, 0.18
HSL	28°, 20%, 77%
HSV	28°, 12%, 82%
XYZ	54.1792, 55.9007, 53.2817
YIQ	197.6330, 11.2790, -0.6650

Conversions

Conversions Part 2

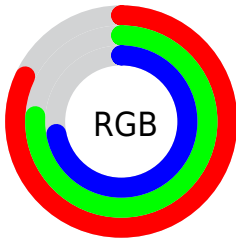
Format	Color
RYB	208, 204, 184
Decimal	13681592
CIELab	79.56, 2.69, 7.15
CIELCh	80, 7.638, 69.409
Yxy	55.9032, 0.3317, 0.3422
Android (android.graphics.Color)	4291871672 (0xFFD0C3B8)
YUV	197.6330, -6.7211, 9.0919
Hunter-Lab	74.7668, -1.4932, 10.0844

Details

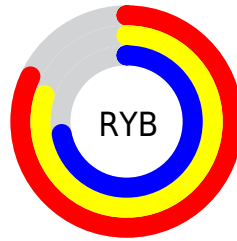
The HunterLab color $74.7668, -1.4932, 10.0844$ is a light color, and the websafe version is hex `CCCCCC`. A complement of this color would be $73.9431, -5.9998, -2.3910$, and the grayscale version is $75.0169, -4.0027, 4.0758$.

A 20% lighter version of the original color is $98.5759, -6.3163, 11.0478$, and $52.4962, -0.2383, 8.0921$ is the 20% darker color. If you saturate the color by 10%, you get $70.8769, 1.2041, 14.6302$, and if you desaturate by 10%, it is $78.7909, -3.8939, 5.1145$.

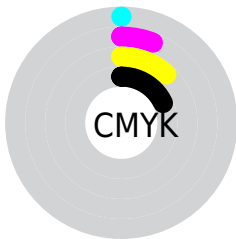
Distribution



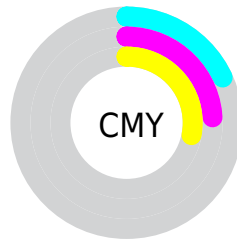
- Red (82%)
- Green (76%)
- Blue (72%)



- Red (82%)
- Yellow (80%)
- Blue (72%)



- Cyan (0%)
- Magenta (6%)
- Yellow (12%)
- Black (18%)



- Cyan (18%)
- Magenta (24%)
- Yellow (28%)

Brightness & Saturation Gradients

These gradients show how the HunterLab color 74.7668, -1.4932, 10.0844 changes by changing the brightness by 10 percent. The first figure shows a shift by +10% for each color and the second figure -10%.

Similar to the brightness gradients but the following saturation gradients show a change of the HunterLab color 74.7668, -1.4932, 10.0844 by changing the saturation by 10% instead.

■ 74.7668, -1.4932,
10.0844

■ 74.7668, -1.4932,
10.0844

202.3182, -7.3358,
19.5759

■ 63.3446, -1.0176,
9.1110

■ 99.4299, -2.5665,
12.0781

■ 52.5702, -0.5826,
8.1487

112.6116, -3.1555,
13.0982

■ 42.4872, -0.1939,
7.1957

126.3293, -3.7776,
14.1349

■ 33.1468, 0.1434,
6.2474

140.5628, -4.4312,
15.1886

■ 24.6133, 0.4227,
5.2961

155.2939, -5.1150,
16.2595

■ 16.9720, 0.6342,
4.3277

170.5065, -5.8277,

■ 10.3424, 0.7628,

17.3477

3.5002

186.1858, -6.5683,
18.4531

0.0000, INF, NaN

0.0000, NaN, NaN

■ 74.7668, -1.4932,
10.0844

■ 74.7668, -1.4932,
10.0844

■ 70.8769, 1.2041,
14.6302

■ 78.7909, -3.8939,
5.1145

■ 67.1286, 4.2282,
18.6957

■ 82.9333, -6.0161,
-0.2364

■ 63.5376, 7.5983,
22.2238

■ 87.1859, -7.8859,
-5.9265

■ 60.1190, 11.3308,
25.1516

■ 91.0959, -11.9871,
-5.6527

■ 56.8896, 15.4325,

■ 94.7763, -17.7110,

27.4155

-1.0939

■ 53.8671, 19.8955,
28.9566

■ 95.9948, -19.5626,
0.3758

■ 51.0692, 24.6898,
29.7324

■ 48.5127, 29.7537,
29.7355

■ 46.5411, 34.1419,
29.2761

Harmonies

Analogous

The Analogous color harmony consists of three colors that are next to each other on the color wheel.



74.7684, 1.5377, 8.2077



74.7668, -1.4932, 10.0844



74.7684, -5.1437, 10.3946

Triad

The Triadic color harmony groups three colors that are evenly spaced from another and form a triangle on the color wheel.



74.7684, -1.4953, 10.0855



74.7684, -10.8292, 2.9640



74.7684, 0.5398, -1.3051

Complementary

The Complementary color scheme is a pair of colors which are on the opposite of each other on the color wheel.



74.7668, -1.4932, 10.0844



73.9431, -5.9998, -2.3910

Split Complementary

Split-complementary colors differ from the complementary color scheme. The scheme consists of three colors, the original color and two neighbors of the complement color.



74.7684, -2.8362, -2.8607



74.7668, -1.4932, 10.0844



74.7684, -9.3684, -0.3188

Square

The Square scheme is like the rectangle color scheme, but the four colors are evenly spaced on the color wheel.



74.7684, -1.4953, 10.0855



74.7684, -10.4858, 6.3926



74.7684, -6.4593, -2.4913



74.7684, 2.7283, 1.6701

Rectangle

The Rectangle color scheme consists of four colors that form a rectangle on the color wheel.



74.7668, -1.4932, 10.0844



74.7684, -7.4274, 9.6851



74.7684, -6.4593, -2.4913



74.7684, -0.4964, -2.0178

Sweetspot

The Sweet Spot groups the original color and five complimentary colors.



74.7684, -1.4953, 10.0855



98.4390, -4.4736, 7.4087



71.9250, 6.2959, 0.7865



45.3505, -1.9605, 3.6684

0.0000, NaN, NaN



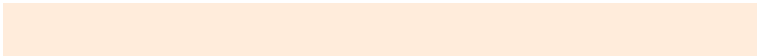
46.2646, -2.4686, 2.5136

Same Dimension

The Same Dimension uses a secret algorithm to generate beautiful new colors.



74.7684, -1.4953, 10.0855



92.8388, -1.0278, 14.2566



78.3581, -7.4420, 13.8407



35.6209, -0.9562, 4.2693



36.9982, 26.3305, 23.2591



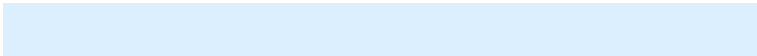
9.6083, 4.2607, 5.9952

Inverse Universe

The Inverse Universe completely reimagines the original color for something new.



73.9431, -5.9998, -2.3910



91.5665, -7.9685, -4.9759



70.3753, -0.0301, -6.9108



35.3031, -2.6914, -0.5357



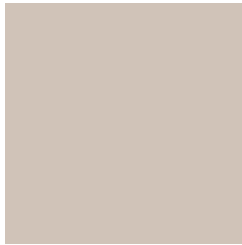
32.1616, 3.9277, -48.6780



8.5796, -0.7534, -9.0975

Previews

White Background



This preview shows how the HunterLab color 74.7668, -1.4932, 10.0844 looks on a white background.

Color Contrast Check

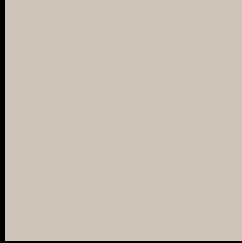
Large Text (above 18pt) WCAG AA × Fail

Any Text WCAG AA × Fail

Large Text (above 18pt) WCAG AAA × Fail

Any Text WCAG AAA × Fail

Black Background



This preview shows how the HunterLab color 74.7668, -1.4932, 10.0844 looks on a black background.

Color Contrast Check

Large Text (above 18pt) WCAG AA ✓ Pass

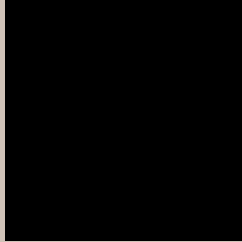
Any Text WCAG AA ✓ Pass

Large Text (above 18pt) WCAG AAA ✓ Pass

Any Text WCAG AAA ✓ Pass

If you want to check with other color combinations, try the [Color Contrast Checker](#).

HunterLab 74.7668, -1.4932, 10.0844 Background



This preview shows how black text looks on a background with the HunterLab color 74.7668, -1.4932, 10.0844.



This preview shows how white text looks on a background with the HunterLab color 74.7668, -1.4932,

Color Blindness Simulation

Color vision deficiency is a very complex topic, and I could not describe the different causes any better than Wikipedia does, so if you want to learn more, you should check out their [article about color blindness](#).

Dichromacy



Original Color

74.7668, -1.4932, 10.0844

Protanopia

74.7128, -3.1699, 9.5580

Deuteranopia

74.6337, 5.6911, 9.6258



Tritanopia

74.8687, 4.8209, -0.5301

Trichromacy



Original Color

74.7668, -1.4932, 10.0844

Protanomaly

74.8076, -2.8413, 9.6684

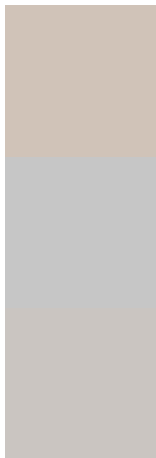
Deuteranomaly

74.7001, 2.9120, 9.6505

Tritanomaly

74.8098, 2.5993, 3.3196

Monochromacy



Original Color

74.7668, -1.4932, 10.0844

Achromatopsia

75.1473, -4.0097, 4.0829

Achromatomaly

75.0595, -3.0573, 6.3454

CSS Examples

Text

The CSS property to change the color of the text to HunterLab 74.7668, -1.4932, 10.0844 is called "color". The color property can be set on classes, ids or directly on the HTML element.

This example shows how text in the color `rgb(208, 195, 184)` looks like.

```
.text, #text, p{  
    color:rgb(208, 195, 184)  
}
```

If you want to add a text shadow in that color use the text-shadow property, you can generate a text shadow directly with our [CSS Text Shadow Generator](#).

Here you see how black text with a 4 pixel rgb(208, 195, 184) colored shadow looks like.

```
.shadow{ text-shadow: 4px 4px 2px rgb(208, 195, 184) }
```

Border

The CSS property to change the border of an element to HunterLab 74.7668, -1.4932, 10.0844 is called "border". The border property can be set on classes, ids or directly on the HTML element.

This example shows the color as border, it can be applied via the CSS property "border" or "border-color".

```
.border, #border, table{ border:4px solid rgb(208, 195, 184) }
```


If only the border color should be changed use the property `border-color`.

```
.border{ border-color:rgb(208, 195, 184) }
```

If you want to add a box shadow in that color use:

Here you see how a box with a 4 pixel `rgb(208, 195, 184)` colored shadow looks like.

```
.boxshadow{ -moz-box-shadow:4px 4px 4px  
4px rgb(208, 195, 184); -webkit-box-  
shadow:4px 4px 4px 4px rgb(208, 195, 184);  
box-shadow:4px 4px 4px 4px rgb(208, 195,  
184) }
```

Background

The CSS property to change the background color of an element to HunterLab 74.7668, -1.4932, 10.0844 is called "background". The background property can be set on classes, ids or directly on the HTML element.

```
.background, #background, body{  
background: rgb(208, 195, 184) }
```

If only the background color should be changed can be used:

```
.background{ background-color: rgb(208,  
195, 184) }
```

This example shows the color as background, it is applied via the CSS property "background".

To optimize and compress your CSS code, you can use our [online CSS compressor and optimizer](#) based on csstidy. If you want to create a linear or radial gradient as background or border, check our [CSS Gradient Generator](#).

Hey! You found this booklet interesting? Support Converting Colors with the new Membership Option!

The pro membership hides all ads, plus gives you double the colors in the color bucket, and more awesome pro features!

[Learn more, Memberships starting at \\$2.50/m!](#)

**Follow me
on Twitter!**

@ConvertingColor