

# Converting Colors

HunterLab(74.7163, -1.3846,  
15.0100)

Have a look what the booklet for  
HunterLab(74.7163, -1.3846,  
15.0100) contains.

<b>HunterLab(74.6380, -1.0456, 14.9693)</b> .....	3
<b><i>Conversions</i></b> .....	4
<b><i>Details</i></b> .....	6
<b><i>Harmonies</i></b> .....	12
<b><i>Previews</i></b> .....	24
<b><i>Color Blindness Simulation</i></b> .....	28
<b><i>CSS Examples</i></b> .....	31

# Color

**HunterLab(74.6380, -1.0456,  
14.9693)**

# Conversions

## Conversions Part 1

Format	Color
Hex	D5C2AC
RGB	213, 194, 172
RGB Percent	84%, 76%, 67%
CMY	0.1647, 0.2392, 0.3255
CMYK	0.00, 0.09, 0.19, 0.16
HSL	32°, 33%, 75%
HSV	32°, 19%, 84%
XYZ	54.1788, 55.7083, 46.9270
YIQ	197.1730, 18.3860, -2.8140

# Conversions

## Conversions Part 2

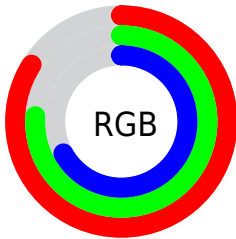
Format	Color
R <sub>Y</sub> B	207, 213, 172
Decimal	14009004
CIE Lab	79.45, 3.16, 13.49
CIE LCh	79, 13.858, 76.827
Yxy	55.7108, 0.3455, 0.3553
Android (android.graphics.Color)	4292199084 (0xFFD5C2AC)
YUV	197.1730, -12.4103, 13.8803
Hunter-Lab	74.6380, -1.0456, 14.9693

# Details

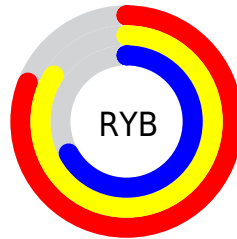
The HunterLab color **74.6380, -1.0456, 14.9693** is a light color, and the websafe version is hex **CCCCCC**. A complement of this color would be **71.2988, -5.4687, -8.5101**, and the grayscale version is **74.8427, -3.9934, 4.0663**.

A 20% lighter version of the original color is **97.5588, -7.3558, 15.8205**, and **52.3272, 0.0831, 12.1115** is the 20% darker color. If you saturate the color by 10%, you get **71.2101, 1.1453, 19.6279**, and if you desaturate by 10%, it is **78.1894, -2.9085, 9.7379**.

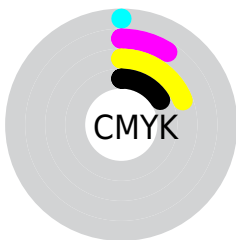
# Distribution



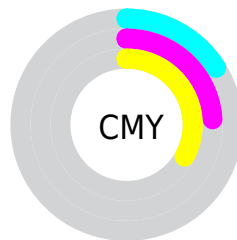
- Red (84%)
- Green (76%)
- Blue (67%)



- Red (81%)
- Yellow (84%)
- Blue (67%)



- Cyan (0%)
- Magenta (9%)
- Yellow (19%)
- Black (16%)



- Cyan (16%)
- Magenta (24%)
- Yellow (33%)

# Brightness & Saturation Gradients

These gradients show how the HunterLab color 74.6380, -1.0456, 14.9693 changes by changing the brightness by 10 percent. The first figure shows a shift by +10% for each color and the second figure -10%.

Similar to the brightness gradients but the following saturation gradients show a change of the HunterLab color 74.6380, -1.0456, 14.9693 by changing the saturation by 10% instead.



■ 74.6380, -1.0456,  
14.9693

■ 74.6380, -1.0456,  
14.9693

202.1387, -6.7154,  
26.8370

■ 63.2227, -0.5938,  
13.6603

■ 99.2883, -2.0754,  
17.5764

■ 52.4557, -0.1837,  
12.3381

112.4640, -2.6440,  
18.8801

■ 42.3806, 0.1784,  
10.9950

126.1759, -3.2464,  
20.1876

■ 33.0486, 0.4871,  
9.6179

140.4038, -3.8810,  
21.5010

■ 24.5244, 0.7351,  
8.1863

155.1296, -4.5464,  
22.8216

■ 16.8934, 0.9119,  
6.6655

170.3370, -5.2414,

■ 10.2758, 1.0008,

24.1506

6.0646

186.0112, -5.9647,  
25.4888

0.0000, INF, NaN

0.0000, NaN, NaN

■ 74.6380, -1.0456,  
14.9693

■ 74.6380, -1.0456,  
14.9693

■ 71.2101, 1.1453,  
19.6279

■ 78.1894, -2.9085,  
9.7379

■ 67.9101, 3.6913,  
23.6555

■ 81.8504, -4.4587,  
3.9822

■ 64.7498, 6.6073,  
26.9972

■ 85.6149, -5.7206,  
-2.2491

■ 61.7398, 9.9044,  
29.5990

■ 89.3957, -7.1550,  
-7.7869

■ 58.8911, 13.5845,

■ 92.5613, -12.2464,

31.4143

-3.7794

■ 56.2140, 17.6356,  
32.4133

■ 95.7881, -17.2746,  
0.1623

■ 53.7179, 22.0253,  
32.5973

■ 96.3775, -18.1768,  
0.8679

■ 51.4045, 26.6707,  
32.0891

■ 51.2368, 27.0216,  
32.0450

# Harmonies

## Analogous

The Analogous color harmony consists of three colors that are next to each other on the color wheel.



74.6397, 4.9723, 12.4066



74.6380, -1.0456, 14.9693



74.6397, -7.6550, 14.8008

# Triad

The Triadic color harmony groups three colors that are evenly spaced from another and form a triangle on the color wheel.



74.6397, -1.0479, 14.9704



74.6397, -15.8447, 0.4523



74.6397, 5.5771, -4.7552

# Complementary

The Complementary color scheme is a pair of colors which are on the opposite of each other on the color wheel.



74.6380, -1.0456, 14.9693



71.2988, -5.4687, -8.5101

# Split Complementary

Split-complementary colors differ from the complementary color scheme. The scheme consists of three colors, the original color and two neighbors of the complement color.



74.6397, -0.2459, -8.5536



74.6380, -1.0456, 14.9693



74.6397, -12.5419, -5.3713

# Square

The Square scheme is like the rectangle color scheme, but the four colors are evenly spaced on the color wheel.



74.6397, -1.0479, 14.9704



74.6397, -16.0424, 6.7841



74.6397, -6.8805, -8.7885



74.6397, 8.8866, 1.2351



# Rectangle

The Rectangle color scheme consists of four colors that form a rectangle on the color wheel.



74.6380, -1.0456, 14.9693



74.6397, -11.5031, 13.1648



74.6397, -6.8805, -8.7885



74.6397, 3.8397, -6.3527

# Sweetspot

The Sweet Spot groups the original color and five complimentary colors.



74.6397, -1.0479, 14.9704



97.2696, -4.2112, 9.7561



68.8617, 13.2789, 0.1590



44.8652, -1.8879, 4.7251

0.0000, NaN, NaN



46.2646, -2.4686, 2.5136

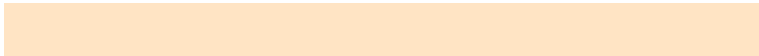


# Same Dimension

The Same Dimension uses a secret algorithm to generate beautiful new colors.



74.6397, -1.0479, 14.9704



89.8071, -0.2627, 20.7178



80.3182, -11.0194, 20.4869



36.7609, -1.3544, 4.6275



40.3019, 20.5450, 25.1935



10.6985, 3.3462, 6.6510

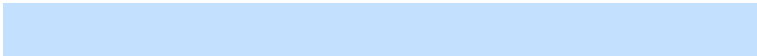


# Inverse Universe

The Inverse Universe completely reimagines the original color for something new.



71.2988, -5.4687, -8.5101



84.8870, -6.7529, -13.8907



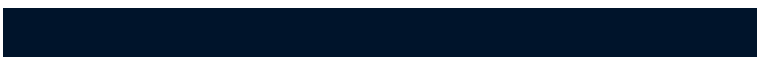
65.7541, 4.5877, -16.1649



35.9827, -2.3891, -0.8349



29.2389, 10.7580, -59.7694

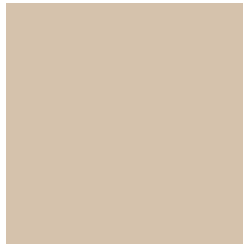


8.2480, 0.5884, -11.5795



# Previews

## White Background



This preview shows how the HunterLab color 74.6380, -1.0456, 14.9693 looks on a white background.

## Color Contrast Check

Large Text (above 18pt) WCAG AA × Fail

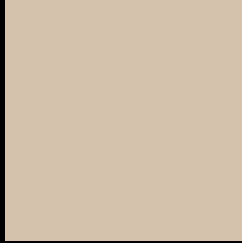
Any Text WCAG AA × Fail

Large Text (above 18pt) WCAG AAA × Fail

Any Text WCAG AAA × Fail



# Black Background



This preview shows how the HunterLab color 74.6380, -1.0456, 14.9693 looks on a black background.

## Color Contrast Check

Large Text (above 18pt) WCAG AA ✓ Pass

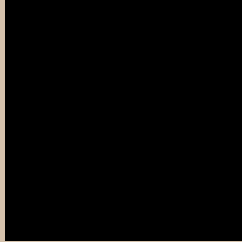
Any Text WCAG AA ✓ Pass

Large Text (above 18pt) WCAG AAA ✓ Pass

Any Text WCAG AAA ✓ Pass

If you want to check with other color combinations, try the [Color Contrast Checker](#).

# HunterLab 74.6380, -1.0456, 14.9693 Background



This preview shows how black text looks on a background with the HunterLab color 74.6380, -1.0456, 14.9693.



This preview shows how white text looks on a background with the HunterLab color 74.6380, -1.0456,

14.9693.

# Color Blindness Simulation

Color vision deficiency is a very complex topic, and I could not describe the different causes any better than Wikipedia does, so if you want to learn more, you should check out their [article about color blindness](#).

## Dichromacy



### Original Color

74.6380, -1.0456, 14.9693

### Protanopia

74.5780, -4.2888, 14.4488

### Deuteranopia

74.7339, 5.3768, 14.7797



## Tritanopia

74.5027, 7.8915, 0.5843

# Trichromacy



## Original Color

74.6380, -1.0456, 14.9693

## Protanomaly

74.5672, -2.7768, 14.4641

## Deuteranomaly

74.5995, 3.4282, 14.6062

## Tritanomaly

74.6099, 4.5201, 6.4240

# Monochromacy



## Original Color

74.6380, -1.0456, 14.9693

## Achromatopsia

74.7222, -3.9870, 4.0598

## Achromatomaly

74.7042, -3.0282, 8.2193

# CSS Examples

## Text

The CSS property to change the color of the text to HunterLab 74.6380, -1.0456, 14.9693 is called "color". The color property can be set on classes, ids or directly on the HTML element.

This example shows how text in the color `rgb(213, 194, 172)` looks like.

```
.text, #text, p{  
  color:rgb(213, 194, 172)  
}
```

If you want to add a text shadow in that color use the text-shadow property, you can generate a text shadow directly with our [CSS Text Shadow Generator](#).

Here you see how black text with a 4 pixel rgb(213, 194, 172) colored shadow looks like.

```
.shadow{ text-shadow: 4px 4px 2px rgb(213, 194, 172) }
```

## Border

The CSS property to change the border of an element to HunterLab 74.6380, -1.0456, 14.9693 is called "border". The border property can be set on classes, ids or directly on the HTML element.

This example shows the color as border, it can be applied via the CSS property "border" or "border-color".

```
.border, #border, table{ border:4px solid rgb(213, 194, 172) }
```



If only the border color should be changed use the property `border-color`.

```
.border{ border-color:rgb(213, 194, 172) }
```

If you want to add a box shadow in that color use:

Here you see how a box with a 4 pixel `rgb(213, 194, 172)` colored shadow looks like.

```
.boxshadow{ -moz-box-shadow:4px 4px 4px  
4px rgb(213, 194, 172); -webkit-box-  
shadow:4px 4px 4px 4px rgb(213, 194, 172);  
box-shadow:4px 4px 4px 4px rgb(213, 194,  
172) }
```

# Background

The CSS property to change the background color of an element to HunterLab 74.6380, -1.0456, 14.9693 is called "background". The background property can be set on classes, ids or directly on the HTML element.

```
.background, #background, body{  
background: rgb(213, 194, 172) }
```

If only the background color should be changed can be used:

```
.background{ background-color: rgb(213,  
194, 172) }
```

This example shows the color as background, it is applied via the CSS property "background".

To optimize and compress your CSS code, you can use our [online CSS compressor and optimizer](#) based on csstidy. If you want to create a linear or radial gradient as background or border, check our [CSS Gradient Generator](#).

Hey! You found this booklet interesting? Support Converting Colors with the new Membership Option!

The pro membership hides all ads, plus gives you double the colors in the color bucket, and more awesome pro features!

**[Learn more, Memberships starting at \\$2.50/m!](#)**

**Follow me  
on Twitter!**

@ConvertingColor