

Converting Colors

HunterLab(74.8142, 1.2137,
7.3168)

Have a look what the booklet for
HunterLab(74.8142, 1.2137, 7.3168)
contains.

HunterLab(74.9334, 0.9548, 7.6451)	3
<i>Conversions</i>	4
<i>Details</i>	6
<i>Harmonies</i>	12
<i>Previews</i>	24
<i>Color Blindness Simulation</i>	28
<i>CSS Examples</i>	31

Color

**HunterLab(74.9334, 0.9548,
7.6451)**

Conversions

Conversions Part 1

Format	Color
Hex	D3C2BE
RGB	211, 194, 190
RGB Percent	83%, 76%, 75%
CMY	0.1725, 0.2392, 0.2549
CMYK	0.00, 0.08, 0.10, 0.17
HSL	11°, 19%, 79%
HSV	11°, 10%, 83%
XYZ	55.4500, 56.1501, 56.6307
YIQ	198.6270, 11.4160, 2.3600

Conversions

Conversions Part 2

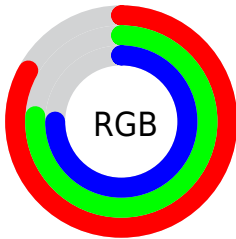
Format	Color
R _Y B	211, 195, 190
Decimal	13877950
CIE Lab	79.70, 5.29, 4.16
CIE LCh	80, 6.730, 38.175
Yxy	56.1526, 0.3296, 0.3338
Android (android.graphics.Color)	4292068030 (0xFFD3C2BE)
YUV	198.6270, -4.2531, 10.8511
Hunter-Lab	74.9334, 0.9548, 7.6451

Details

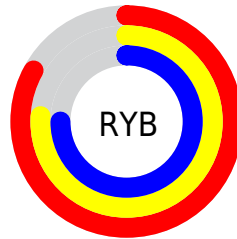
The HunterLab color $74.9334, 0.9548, 7.6451$ is a light color, and the websafe version is hex `CCCCCC`. A complement of this color would be $77.6368, -8.7075, 0.6223$, and the grayscale version is $75.4295, -4.0247, 4.0982$.

A 20% lighter version of the original color is $98.1249, -4.2511, 7.7077$, and $52.5645, 1.7498, 5.7256$ is the 20% darker color. If you saturate the color by 10%, you get $69.3727, 6.5413, 10.8225$, and if you desaturate by 10%, it is $80.7383, -4.3310, 4.3693$.

Distribution



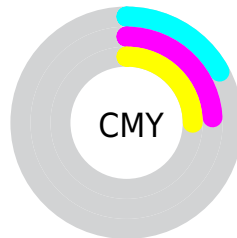
- Red (83%)
- Green (76%)
- Blue (75%)



- Red (83%)
- Yellow (76%)
- Blue (75%)



- Cyan (0%)
- Magenta (8%)
- Yellow (10%)
- Black (17%)



- Cyan (17%)
- Magenta (24%)
- Yellow (25%)

Brightness & Saturation Gradients

These gradients show how the HunterLab color 74.9334, 0.9548, 7.6451 changes by changing the brightness by 10 percent. The first figure shows a shift by +10% for each color and the second figure -10%.

Similar to the brightness gradients but the following saturation gradients show a change of the HunterLab color 74.9334, 0.9548, 7.6451 by changing the saturation by 10% instead.

■ 74.9334, 0.9548,
7.6451

■ 74.9334, 0.9548,
7.6451

202.5503, -3.9587,
16.0562

■ 63.5022, 1.3043,
6.8224

■ 99.6131, 0.1158,
9.3619

■ 52.7184, 1.6061,
6.0211

112.8026, -0.3633,
10.2535

■ 42.6253, 1.8529,
5.2418

126.5277, -0.8797,
11.1671

■ 33.2738, 2.0379,
4.4834

140.7684, -1.4314,
12.1026

■ 24.7284, 2.1515,
3.7433

155.5065, -2.0165,
13.0596

■ 17.0736, 2.1799,
3.0165

170.7258, -2.6336,

■ 10.4286, 2.1012,

14.0378

2.3056

186.4116, -3.2814,
15.0367

0.0000, INF, NaN

0.0000, NaN, NaN

■ 74.9334, 0.9548,
7.6451

■ 74.9334, 0.9548,
7.6451

■ 69.3727, 6.5413,
10.8225

■ 80.7383, -4.3310,
4.3693

■ 64.0864, 12.4595,
13.8640

■ 86.7533, -9.3411,
1.0148

■ 59.1190, 18.7162,
16.7220

■ 92.9560, -14.1100,
-2.4012

■ 54.5211, 25.2896,
19.3280

■ 96.2232, -18.7349,
0.6697

■ 50.3519, 32.1046,

21.5907

■ 46.6771, 39.0058,
23.3969

■ 43.5640, 45.7329,
24.6247

■ 41.0714, 51.9181,
25.1786

■ 39.2273, 57.0982,
25.1669

Harmonies

Analogous

The Analogous color harmony consists of three colors that are next to each other on the color wheel.



74.9351, 2.2574, 4.9159



74.9334, 0.9548, 7.6451



74.9351, -1.6748, 9.3689

Triad

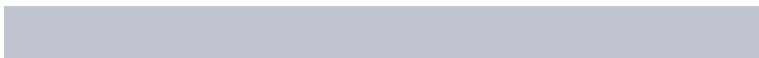
The Triadic color harmony groups three colors that are evenly spaced from another and form a triangle on the color wheel.



74.9351, 0.9527, 7.6463



74.9351, -9.6923, 6.2465



74.9351, -3.1154, -2.0205

Complementary

The Complementary color scheme is a pair of colors which are on the opposite of each other on the color wheel.



74.9334, 0.9548, 7.6451



77.6368, -8.7075, 0.6223

Split Complementary

Split-complementary colors differ from the complementary color scheme. The scheme consists of three colors, the original color and two neighbors of the complement color.



74.9351, -6.3019, -1.6273



74.9334, 0.9548, 7.6451



74.9351, -10.0632, 3.2322

Square

The Square scheme is like the rectangle color scheme, but the four colors are evenly spaced on the color wheel.



74.9351, 0.9527, 7.6463



74.9351, -7.8100, 8.5850



74.9351, -8.8319, 0.3271



74.9351, -0.1172, -0.7256

Rectangle

The Rectangle color scheme consists of four colors that form a rectangle on the color wheel.



74.9334, 0.9548, 7.6451



74.9351, -3.8041, 9.7578



74.9351, -8.8319, 0.3271



74.9351, -4.2004, -2.0824

Sweetspot

The Sweet Spot groups the original color and five complimentary colors.



74.9351, 0.9527, 7.6463



97.7906, -3.3876, 6.6756



74.2892, 5.8919, -1.3102



44.9712, -1.3239, 3.2413

0.0000, NaN, NaN



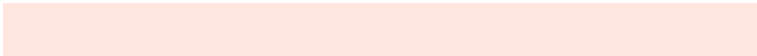
46.2646, -2.4686, 2.5136

Same Dimension

The Same Dimension uses a secret algorithm to generate beautiful new colors.



74.9351, 0.9527, 7.6463



91.3168, 2.6552, 10.3428



78.0510, -4.3225, 11.0127



34.8824, 0.3036, 3.4623



30.6522, 43.7917, 19.6544



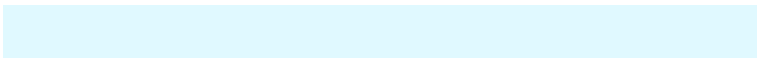
7.9761, 8.2182, 5.0587

Inverse Universe

The Inverse Universe completely reimagines the original color for something new.



77.6368, -8.7075, 0.6223



95.3862, -11.9011, -0.2380



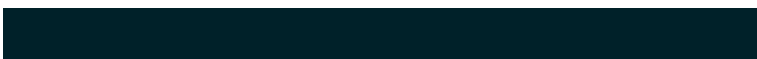
74.4478, -3.4943, -3.2675



36.0665, -3.9299, 0.3839



45.2842, -16.4549, -21.0799



11.1696, -4.5055, -4.2350

Previews

White Background



This preview shows how the HunterLab color 74.9334, 0.9548, 7.6451 looks on a white background.

Color Contrast Check

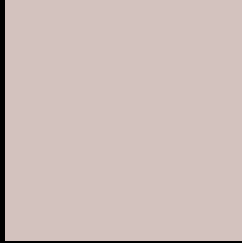
Large Text (above 18pt) WCAG AA × Fail

Any Text WCAG AA × Fail

Large Text (above 18pt) WCAG AAA × Fail

Any Text WCAG AAA × Fail

Black Background



This preview shows how the HunterLab color 74.9334, 0.9548, 7.6451 looks on a black background.

Color Contrast Check

Large Text (above 18pt) WCAG AA ✓ Pass

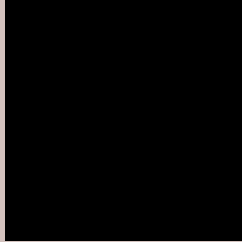
Any Text WCAG AA ✓ Pass

Large Text (above 18pt) WCAG AAA ✓ Pass

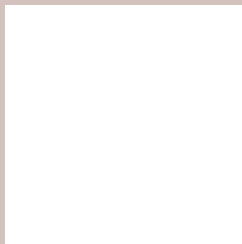
Any Text WCAG AAA ✓ Pass

If you want to check with other color combinations, try the [Color Contrast Checker](#).

HunterLab 74.9334, 0.9548, 7.6451 Background



This preview shows how black text looks on a background with the HunterLab color 74.9334, 0.9548, 7.6451.



This preview shows how white text looks on a background with the HunterLab color 74.9334, 0.9548,

7.6451.

Color Blindness Simulation

Color vision deficiency is a very complex topic, and I could not describe the different causes any better than Wikipedia does, so if you want to learn more, you should check out their [article about color blindness](#).

Dichromacy



Original Color

74.9334, 0.9548, 7.6451

Protanopia

75.0299, -3.2194, 6.7692

Deuteranopia

74.8888, 5.3978, 7.2172



Tritanopia

74.7748, 6.0096, -0.6258

Trichromacy



Original Color

74.9334, 0.9548, 7.6451

Protanomaly

74.9804, -1.8985, 7.1936

Deuteranomaly

74.8731, 3.8429, 7.1721

Tritanomaly

74.7752, 4.1217, 2.3334

Monochromacy



Original Color

74.9334, 0.9548, 7.6451

Achromatopsia

75.5728, -4.0324, 4.1060

Achromatomaly

75.2426, -2.2437, 5.1728

CSS Examples

Text

The CSS property to change the color of the text to HunterLab 74.9334, 0.9548, 7.6451 is called "color". The color property can be set on classes, ids or directly on the HTML element.

This example shows how text in the color `rgb(211, 194, 190)` looks like.

```
.text, #text, p{  
    color:rgb(211, 194, 190)  
}
```

If you want to add a text shadow in that color use the text-shadow property, you can generate a text shadow directly with our [CSS Text Shadow Generator](#).

Here you see how black text with a 4 pixel rgb(211, 194, 190) colored shadow looks like.

```
.shadow{ text-shadow: 4px 4px 2px rgb(211, 194, 190) }
```

Border

The CSS property to change the border of an element to HunterLab 74.9334, 0.9548, 7.6451 is called "border".

The border property can be set on classes, ids or directly on the HTML element.

This example shows the color as border, it can be applied via the CSS property "border" or "border-color".

```
.border, #border, table{ border:4px solid rgb(211, 194, 190) }
```


If only the border color should be changed use the property border-color.

```
.border{ border-color:rgb(211, 194, 190) }
```

If you want to add a box shadow in that color use:

Here you see how a box with a 4 pixel rgb(211, 194, 190) colored shadow looks like.

```
.boxshadow{ -moz-box-shadow:4px 4px 4px  
4px rgb(211, 194, 190); -webkit-box-  
shadow:4px 4px 4px 4px rgb(211, 194, 190);  
box-shadow:4px 4px 4px 4px rgb(211, 194,  
190) }
```

Background

The CSS property to change the background color of an element to HunterLab 74.9334, 0.9548, 7.6451 is called "background". The background property can be set on classes, ids or directly on the HTML element.

```
.background, #background, body{  
background: rgb(211, 194, 190) }
```

If only the background color should be changed can be used:

```
.background{ background-color: rgb(211,  
194, 190) }
```

This example shows the color as background, it is applied via the CSS property "background".

To optimize and compress your CSS code, you can use our [online CSS compressor and optimizer](#) based on csstidy. If you want to create a linear or radial gradient as background or border, check our [CSS Gradient Generator](#).

Hey! You found this booklet interesting? Support Converting Colors with the new Membership Option!

The pro membership hides all ads, plus gives you double the colors in the color bucket, and more awesome pro features!

[Learn more, Memberships starting at \\$2.50/m!](#)

**Follow me
on Twitter!**

@ConvertingColor