

Converting Colors

HunterLab(74.8599, 3.1256,
2.8436)

Have a look what the booklet for
HunterLab(74.8599, 3.1256, 2.8436)
contains.

HunterLab(74.9393, 3.1000, 2.9989)	3
<i>Conversions</i>	4
<i>Details</i>	6
<i>Harmonies</i>	12
<i>Previews</i>	24
<i>Color Blindness Simulation</i>	28
<i>CSS Examples</i>	31

Color

**HunterLab(74.9393, 3.1000,
2.9989)**

Conversions

Conversions Part 1

Format	Color
Hex	D3C1C8
RGB	211, 193, 200
RGB Percent	83%, 76%, 78%
CMY	0.1725, 0.2431, 0.2157
CMYK	0.00, 0.09, 0.05, 0.17
HSL	337°, 17%, 79%
HSV	337°, 9%, 83%
XYZ	56.3593, 56.1590, 62.5130
YIQ	199.1800, 8.4810, 5.9930

Conversions

Conversions Part 2

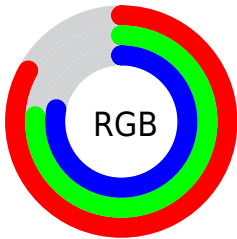
Format	Color
RYB	211, 193, 200
Decimal	13877704
CIELab	79.71, 7.54, -1.22
CIELCh	80, 7.639, 350.826
Yxy	56.1614, 0.3220, 0.3209
Android (android.graphics.Color)	4292067784 (0xFFD3C1C8)
YUV	199.1800, 0.4043, 10.3661
Hunter-Lab	74.9393, 3.1000, 2.9989

Details

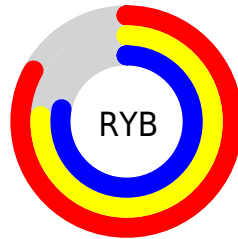
The HunterLab color $74.9393, 3.1000, 2.9989$ is a light color, and the websafe version is hex $CCCCCC$. A complement of this color would be $78.9222, -11.0326, 5.5198$, and the grayscale version is $75.6467, -4.0363, 4.1100$.

A 20% lighter version of the original color is $98.0976, -2.1450, 3.2290$, and $52.5438, 3.6149, 1.7549$ is the 20% darker color. If you saturate the color by 10%, you get $68.4911, 11.9600, 1.6646$, and if you desaturate by 10%, it is $81.7278, -5.5691, 4.6438$.

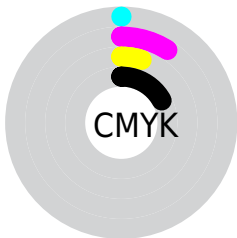
Distribution



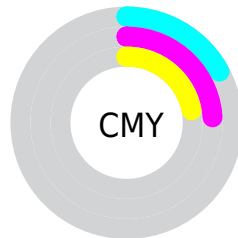
- Red (83%)
- Green (76%)
- Blue (78%)



- Red (83%)
- Yellow (76%)
- Blue (78%)



- Cyan (0%)
- Magenta (9%)
- Yellow (5%)
- Black (17%)



- Cyan (17%)
- Magenta (24%)
- Yellow (22%)

Brightness & Saturation Gradients

These gradients show how the HunterLab color 74.9393, 3.1000, 2.9989 changes by changing the brightness by 10 percent. The first figure shows a shift by +10% for each color and the second figure -10%.

Similar to the brightness gradients but the following saturation gradients show a change of the HunterLab color 74.9393, 3.1000, 2.9989 by changing the saturation by 10% instead.

■ 74.9393, 3.1000,
2.9989

■ 74.9393, 3.1000,
2.9989

202.5585, -1.0146,
9.5280

■ 63.5078, 3.3417,
2.4349

■ 99.6196, 2.4622,
4.2376

■ 52.7236, 3.5297,
1.9083

112.8093, 2.0773,
4.9060

■ 42.6301, 3.6555,
1.4234

126.5347, 1.6518,
5.6055

■ 33.2783, 3.7108,
0.9838

140.7756, 1.1878,
6.3347

■ 24.7325, 3.6842,
0.5945

155.5140, 0.6876,
7.0926

■ 17.0772, 3.5587,
0.2623

170.7335, 0.1527,

■ 10.4317, 3.3079,

7.8780

-0.0027

186.4196, -0.4151,
8.6901

0.0000, INF, -NF

0.0000, NaN, NaN

■ 74.9393, 3.1000,
2.9989

■ 74.9393, 3.1000,
2.9989

■ 68.4911, 11.9600,
1.6646

■ 81.7278, -5.5691,
4.6438

■ 62.4369, 20.9858,
0.7138

■ 88.8049, -14.0419,
6.5356

■ 56.8507, 30.0850,
0.2430

■ 95.6989, -21.6893,
8.1439

■ 51.8203, 39.0689,
0.3632

■ 96.1100, -19.3713,
2.2802

■ 47.4461, 47.6036,

■ 96.2232, -18.7348,

1.1870

0.6697

■ 43.8332, 55.1827,
2.7977

■ 41.0717, 61.1733,
5.1980

■ 39.2053, 64.9956,
8.2576

■ 38.1516, 66.5566,
11.6621

Harmonies

Analogous

The Analogous color harmony consists of three colors that are next to each other on the color wheel.



74.9409, 1.5516, -0.2901



74.9393, 3.1000, 2.9989



74.9409, 2.7136, 6.4289

Triad

The Triadic color harmony groups three colors that are evenly spaced from another and form a triangle on the color wheel.



74.9409, 3.0980, 3.0002



74.9409, -6.4973, 10.0911



74.9409, -8.4121, -1.3184

Complementary

The Complementary color scheme is a pair of colors which are on the opposite of each other on the color wheel.



74.9393, 3.1000, 2.9989



78.9222, -11.0326, 5.5198

Split Complementary

Split-complementary colors differ from the complementary color scheme. The scheme consists of three colors, the original color and two neighbors of the complement color.



74.9409, -10.4904, 1.6510



74.9393, 3.1000, 2.9989



74.9409, -9.3998, 8.2003

Square

The Square scheme is like the rectangle color scheme, but the four colors are evenly spaced on the color wheel.



74.9409, 3.0980, 3.0002



74.9409, -2.8733, 10.4134



74.9409, -10.8484, 5.1425



74.9409, -5.1254, -2.8612

Rectangle

The Rectangle color scheme consists of four colors that form a rectangle on the color wheel.



74.9393, 3.1000, 2.9989



74.9409, 1.4169, 8.3401



74.9409, -10.8484, 5.1425



74.9409, -9.2725, -0.4475

Sweetspot

The Sweet Spot groups the original color and five complimentary colors.



74.9409, 3.0980, 3.0002



97.4260, -2.0942, 4.7944



74.6022, 2.6637, -2.9632



44.7582, -0.5663, 2.1415

0.0000, NaN, NaN



46.2646, -2.4686, 2.5136

Same Dimension

The Same Dimension uses a secret algorithm to generate beautiful new colors.



74.9409, 3.0980, 3.0002



91.5599, 5.5574, 3.4282



75.2611, 1.0204, 6.6453



34.4721, 1.7918, 1.3305



29.5710, 51.9488, 8.9724



7.1015, 12.6825, 0.5502

Inverse Universe

The Inverse Universe completely reimagines the original color for something new.



74.9409, 3.0980, 3.0002



91.5599, 5.5574, 3.4282



78.5756, -8.9256, 1.7590



34.4721, 1.7918, 1.3305



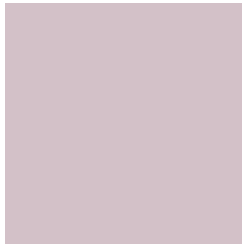
29.5710, 51.9488, 8.9724



7.1015, 12.6825, 0.5502

Previews

White Background



This preview shows how the HunterLab color 74.9393, 3.1000, 2.9989 looks on a white background.

Color Contrast Check

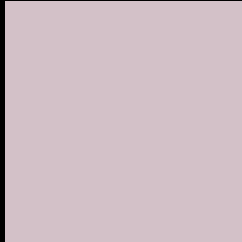
Large Text (above 18pt) WCAG AA × Fail

Any Text WCAG AA × Fail

Large Text (above 18pt) WCAG AAA × Fail

Any Text WCAG AAA × Fail

Black Background



This preview shows how the HunterLab color 74.9393, 3.1000, 2.9989 looks on a black background.

Color Contrast Check

Large Text (above 18pt) WCAG AA ✓ Pass

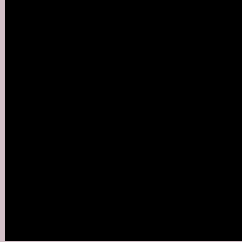
Any Text WCAG AA ✓ Pass

Large Text (above 18pt) WCAG AAA ✓ Pass

Any Text WCAG AAA ✓ Pass

If you want to check with other color combinations, try the [Color Contrast Checker](#).

HunterLab 74.9393, 3.1000, 2.9989 Background



This preview shows how black text looks on a background with the HunterLab color 74.9393, 3.1000, 2.9989.



This preview shows how white text looks on a background with the HunterLab color 74.9393, 3.1000,

2.9989.

Color Blindness Simulation

Color vision deficiency is a very complex topic, and I could not describe the different causes any better than Wikipedia does, so if you want to learn more, you should check out their [article about color blindness](#).

Dichromacy



Original Color

74.9393, 3.1000, 2.9989

Protanopia

75.1506, -2.1910, 2.1849

Deuteranopia

74.7521, 5.4857, 2.8171



Tritanopia

74.9675, 5.1530, -0.4017

Trichromacy



Original Color

74.9393, 3.1000, 2.9989

Protanomaly

75.1893, -0.5730, 2.7477

Deuteranomaly

74.9437, 4.6260, 3.0309

Tritanomaly

74.8705, 4.6330, 0.9773

Monochromacy



Original Color

74.9393, 3.1000, 2.9989

Achromatopsia

75.5728, -4.0324, 4.1060

Achromatomaly

75.3343, -1.7441, 3.8649

CSS Examples

Text

The CSS property to change the color of the text to HunterLab 74.9393, 3.1000, 2.9989 is called "color". The color property can be set on classes, ids or directly on the HTML element.

This example shows how text in the color `rgb(211, 193, 200)` looks like.

```
.text, #text, p{  
    color:rgb(211, 193, 200)  
}
```

If you want to add a text shadow in that color use the text-shadow property, you can generate a text shadow directly with our [CSS Text Shadow Generator](#).

Here you see how black text with a 4 pixel rgb(211, 193, 200) colored shadow looks like.

```
.shadow{ text-shadow: 4px 4px 2px rgb(211, 193, 200) }
```

Border

The CSS property to change the border of an element to HunterLab 74.9393, 3.1000, 2.9989 is called "border". The border property can be set on classes, ids or directly on the HTML element.

This example shows the color as border, it can be applied via the CSS property "border" or "border-color".

```
.border, #border, table{ border:4px solid rgb(211, 193, 200) }
```


If only the border color should be changed use the property `border-color`.

```
.border{ border-color:rgb(211, 193, 200) }
```

If you want to add a box shadow in that color use:

Here you see how a box with a 4 pixel `rgb(211, 193, 200)` colored shadow looks like.

```
.boxshadow{ -moz-box-shadow:4px 4px 4px  
4px rgb(211, 193, 200); -webkit-box-  
shadow:4px 4px 4px 4px rgb(211, 193, 200);  
box-shadow:4px 4px 4px 4px rgb(211, 193,  
200) }
```

Background

The CSS property to change the background color of an element to HunterLab 74.9393, 3.1000, 2.9989 is called "background". The background property can be set on classes, ids or directly on the HTML element.

```
.background, #background, body{  
background: rgb(211, 193, 200) }
```

If only the background color should be changed can be used:

```
.background{ background-color: rgb(211,  
193, 200) }
```

This example shows the color as background, it is applied via the CSS property "background".

To optimize and compress your CSS code, you can use our [online CSS compressor and optimizer](#) based on csstidy. If you want to create a linear or radial gradient as background or border, check our [CSS Gradient Generator](#).

Hey! You found this booklet interesting? Support Converting Colors with the new Membership Option!

The pro membership hides all ads, plus gives you double the colors in the color bucket, and more awesome pro features!

[Learn more, Memberships starting at \\$2.50/m!](#)

**Follow me
on Twitter!**

@ConvertingColor