

# Converting Colors

HunterLab(74.8750, 6.1520,  
3.5781)

Have a look what the booklet for  
HunterLab(74.8750, 6.1520, 3.5781)  
contains.

<b>HunterLab(74.9245, 6.0007, 3.5154)</b> .....	3
<i><b>Conversions</b></i> .....	4
<i><b>Details</b></i> .....	6
<i><b>Harmonies</b></i> .....	12
<i><b>Previews</b></i> .....	24
<i><b>Color Blindness Simulation</b></i> .....	28
<i><b>CSS Examples</b></i> .....	31

# Color

**HunterLab(74.9245, 6.0007,  
3.5154)**

# Conversions

## Conversions Part 1

Format	Color
Hex	D9BFC7
RGB	217, 191, 199
RGB Percent	85%, 75%, 78%
CMY	0.1490, 0.2510, 0.2196
CMYK	0.00, 0.12, 0.08, 0.15
HSL	342°, 25%, 80%
HSV	342°, 12%, 85%
XYZ	57.5548, 56.1368, 61.8348
YIQ	199.6860, 12.9280, 8.0000

# Conversions

## Conversions Part 2

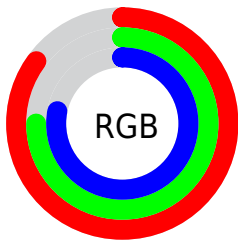
<b>Format</b>	<b>Color</b>
<b>R<sub>YB</sub></b>	217, 191, 199
Decimal	14270407
CIE <sub>Lab</sub>	79.69, 10.54, -0.64
CIE <sub>LCh</sub>	80, 10.564, 356.547
Yxy	56.1393, 0.3279, 0.3198
Android (android.graphics.Color)	4292460487 (0xFFD9BFC7)
YUV	199.6860, -0.3382, 15.1844
Hunter-Lab	74.9245, 6.0007, 3.5154

# Details

The HunterLab color  $74.9245, 6.0007, 3.5154$  is a light color, and the websafe version is hex `CCCCCC`. A complement of this color would be  $80.8127, -13.7320, 5.2975$ , and the grayscale version is  $75.8639, -4.0479, 4.1218$ .

A 20% lighter version of the original color is  $97.4687, -1.0768, 2.4913$ , and  $52.8230, 5.8935, 2.5848$  is the 20% darker color. If you saturate the color by 10%, you get  $68.3382, 14.9516, 3.0396$ , and if you desaturate by 10%, it is  $81.8832, -2.7406, 4.3304$ .

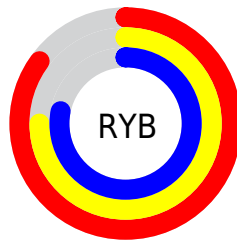
# Distribution



Red (85%)

Green (75%)

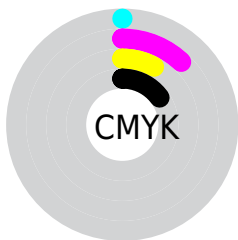
Blue (78%)



Red (85%)

Yellow (75%)

Blue (78%)

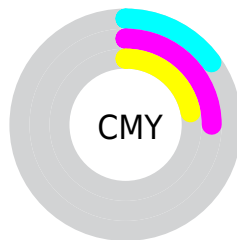


Cyan (0%)

Magenta (12%)

Yellow (8%)

Black (15%)



Cyan (15%)

Magenta (25%)


Yellow (22%)

# Brightness & Saturation Gradients

These gradients show how the HunterLab color 74.9245, 6.0007, 3.5154 changes by changing the brightness by 10 percent. The first figure shows a shift by +10% for each color and the second figure -10%.


Similar to the brightness gradients but the following saturation gradients show a change of the HunterLab color 74.9245, 6.0007, 3.5154 by changing the saturation by 10% instead.





 74.9245, 6.0007,  
3.5154

 74.9245, 6.0007,  
3.5154


202.5379, 2.9426,  
10.2436

 63.4938, 6.1003,  
2.9243


 99.6033, 5.6279,  
4.8044

 52.7105, 6.1386,  
2.3691


112.7924, 5.3678,  
5.4964

 42.6179, 6.1059,  
1.8536


126.5171, 5.0624,  
6.2185

 33.2670, 5.9921,  
1.3811

140.7574, 4.7145,  
6.9696

 24.7222, 5.7834,  
0.9559

155.4951, 4.3266,  
7.7486

 17.0682, 5.4599,  
0.5838

170.7141, 3.9008,

 10.4240, 4.9911,

8.5544

0.2733

186.3995, 3.4390,  
9.3864

0.0000, INF, -NF

0.0000, NaN, NaN

■ 74.9245, 6.0007,  
3.5154

■ 74.9245, 6.0007,  
3.5154

■ 68.3382, 14.9516,  
3.0396

■ 81.8832, -2.7406,  
4.3304

■ 62.1857, 24.0772,  
2.9750

■ 89.1564, -11.2638,  
5.4189

■ 56.5507, 33.2627,  
3.4100

■ 96.3370, -19.0327,  
6.3169

■ 51.5315, 42.2776,  
4.4339

■ 96.6912, -17.0451,  
1.2698

■ 47.2387, 50.7246,

6.1148

■ 43.7829, 58.0253,  
8.4598

■ 41.2490, 63.5081,  
11.3673

■ 39.6573, 66.6503,  
14.6016

■ 38.9283, 67.6991,  
17.1451

# Harmonies

## Analogous

The Analogous color harmony consists of three colors that are next to each other on the color wheel.



74.9262, 4.3223, -1.2261



74.9245, 6.0007, 3.5154



74.9262, 4.9369, 8.1132

# Triad

The Triadic color harmony groups three colors that are evenly spaced from another and form a triangle on the color wheel.



74.9262, 5.9986, 3.5167



74.9262, -8.3172, 11.9228



74.9262, -9.3102, -4.0948

# Complementary

The Complementary color scheme is a pair of colors which are on the opposite of each other on the color wheel.



74.9245, 6.0007, 3.5154



80.8127, -13.7320, 5.2975

# Split Complementary

Split-complementary colors differ from the complementary color scheme. The scheme consists of three colors, the original color and two neighbors of the complement color.



74.9262, -12.5403, -0.1939



74.9245, 6.0007, 3.5154



74.9262, -11.9778, 9.0214

# Square

The Square scheme is like the rectangle color scheme, but the four colors are evenly spaced on the color wheel.



74.9262, 5.9986, 3.5167



74.9262, -3.4127, 12.7724



74.9262, -13.5039, 4.6359



74.9262, -4.5892, -5.8010



# Rectangle

The Rectangle color scheme consists of four colors that form a rectangle on the color wheel.



74.9245, 6.0007, 3.5154



74.9262, 2.8344, 10.5144



74.9262, -13.5039, 4.6359



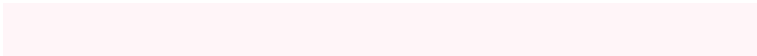
74.9262, -10.6015, -2.9846

# Sweetspot

The Sweet Spot groups the original color and five complimentary colors.



74.9262, 5.9986, 3.5167



96.5491, -1.1536, 4.9685



74.6962, 6.4147, -5.9669



44.3710, -0.1677, 2.2611

0.0000, NaN, NaN



46.2646, -2.4686, 2.5136



# Same Dimension

The Same Dimension uses a secret algorithm to generate beautiful new colors.



74.9262, 5.9986, 3.5167



88.2092, 9.4892, 4.0618



76.0857, 2.2363, 8.5109



36.2176, 1.7752, 1.7453



30.3151, 52.7737, 12.9368



7.8138, 13.7912, 1.8717



# Inverse Universe

The Inverse Universe completely reimagines the original color for something new.



74.9262, 5.9986, 3.5167



88.2092, 9.4892, 4.0618



79.5559, -9.9541, -0.0760



36.2176, 1.7752, 1.7453



30.3151, 52.7737, 12.9368

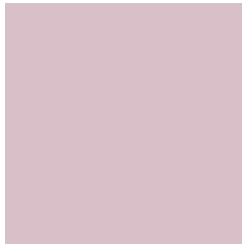


7.8138, 13.7912, 1.8717



# Previews

## White Background



This preview shows how the HunterLab color 74.9245, 6.0007, 3.5154 looks on a white background.

## Color Contrast Check

Large Text (above 18pt) WCAG AA × Fail

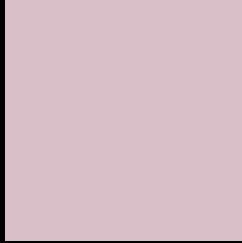
Any Text WCAG AA × Fail

Large Text (above 18pt) WCAG AAA × Fail

Any Text WCAG AAA × Fail



# Black Background



This preview shows how the HunterLab color 74.9245, 6.0007, 3.5154 looks on a black background.

## Color Contrast Check

Large Text (above 18pt) WCAG AA ✓ Pass

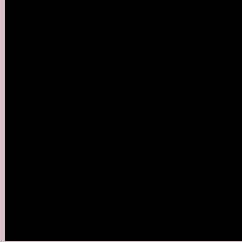
Any Text WCAG AA ✓ Pass

Large Text (above 18pt) WCAG AAA ✓ Pass

Any Text WCAG AAA ✓ Pass

If you want to check with other color combinations, try the [Color Contrast Checker](#).

## HunterLab 74.9245, 6.0007, 3.5154 Background



This preview shows how black text looks on a background with the HunterLab color 74.9245, 6.0007, 3.5154.



This preview shows how white text looks on a background with the HunterLab color 74.9245, 6.0007,

3.5154.

# Color Blindness Simulation

Color vision deficiency is a very complex topic, and I could not describe the different causes any better than Wikipedia does, so if you want to learn more, you should check out their [article about color blindness](#).

## Dichromacy



### Original Color

74.9245, 6.0007, 3.5154

### Protanopia

75.1506, -2.1910, 2.1849

### Deuteranopia

74.8225, 5.6592, 3.3883



## Tritanopia

74.9267, 7.8784, 0.6034

# Trichromacy



## Original Color

74.9245, 6.0007, 3.5154

## Protanomaly

75.0793, 0.5885, 2.6364

## Deuteranomaly

74.8225, 5.6592, 3.3883

## Tritanomaly

74.8626, 7.5374, 1.5149

# Monochromacy



## Original Color

74.9245, 6.0007, 3.5154

## Achromatopsia

75.9987, -4.0551, 4.1292

## Achromatomaly

75.6468, -0.6070, 3.7744

# CSS Examples

## Text

The CSS property to change the color of the text to HunterLab 74.9245, 6.0007, 3.5154 is called "color". The color property can be set on classes, ids or directly on the HTML element.

This example shows how text in the color `rgb(217, 191, 199)` looks like.

```
.text, #text, p{  
    color:rgb(217, 191, 199)  
}
```

If you want to add a text shadow in that color use the text-shadow property, you can generate a text shadow directly with our [CSS Text Shadow Generator](#).

Here you see how black text with a 4 pixel rgb(217, 191, 199) colored shadow looks like.

```
.shadow{ text-shadow: 4px 4px 2px rgb(217, 191, 199) }
```

## Border

The CSS property to change the border of an element to HunterLab 74.9245, 6.0007, 3.5154 is called "border". The border property can be set on classes, ids or directly on the HTML element.

This example shows the color as border, it can be applied via the CSS property "border" or "border-color".

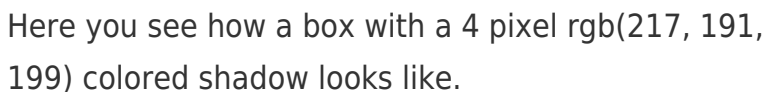
```
.border, #border, table{ border:4px solid rgb(217, 191, 199) }
```



If only the border color should be changed use the property `border-color`.

```
.border{ border-color:rgb(217, 191, 199) }
```

If you want to add a box shadow in that color use:



Here you see how a box with a 4 pixel `rgb(217, 191, 199)` colored shadow looks like.

```
.boxshadow{ -moz-box-shadow:4px 4px 4px  
4px rgb(217, 191, 199); -webkit-box-  
shadow:4px 4px 4px 4px rgb(217, 191, 199);  
box-shadow:4px 4px 4px 4px rgb(217, 191,  
199) }
```

# Background

The CSS property to change the background color of an element to HunterLab 74.9245, 6.0007, 3.5154 is called "background". The background property can be set on classes, ids or directly on the HTML element.

```
.background, #background, body{  
background: rgb(217, 191, 199) }
```

If only the background color should be changed can be used:

```
.background{ background-color: rgb(217,  
191, 199) }
```

This example shows the color as background, it is applied via the CSS property "background".

To optimize and compress your CSS code, you can use our [online CSS compressor and optimizer](#) based on csstidy. If you want to create a linear or radial gradient as background or border, check our [CSS Gradient Generator](#).

Hey! You found this booklet interesting? Support Converting Colors with the new Membership Option!

The pro membership hides all ads, plus gives you double the colors in the color bucket, and more awesome pro features!

**[Learn more, Memberships starting at \\$2.50/m!](#)**

**Follow me  
on Twitter!**

@ConvertingColor