

# Converting Colors

HunterLab(74.9074, 23.2735,  
14.8690)

Have a look what the booklet for  
HunterLab(74.9074, 23.2735,  
14.8690) contains.

<b>HunterLab(74.9378, 23.2116, 14.9000)</b> .....	3
<b><i>Conversions</i></b> .....	4
<b><i>Details</i></b> .....	6
<b><i>Harmonies</i></b> .....	12
<b><i>Previews</i></b> .....	24
<b><i>Color Blindness Simulation</i></b> .....	28
<b><i>CSS Examples</i></b> .....	31

# Color

**HunterLab(74.9378, 23.2116,  
14.9000)**

# Conversions

## Conversions Part 1

Format	Color
Hex	FFB2AE
RGB	255, 178, 174
RGB Percent	100%, 70%, 68%
CMY	0.0000, 0.3019, 0.3176
CMYK	0.00, 0.30, 0.32, 0.00
HSL	3°, 100%, 84%
HSV	3°, 32%, 100%
XYZ	64.8003, 56.1567, 47.4684
YIQ	200.5670, 47.1760, 15.0800

# Conversions

## Conversions Part 2

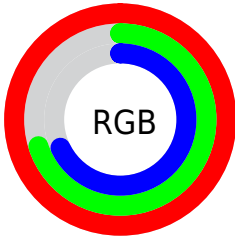
Format	Color
R <sub>YB</sub>	255, 178, 174
Decimal	16757422
CIE Lab	79.70, 27.55, 13.36
CIE LCh	80, 30.615, 25.864
Yxy	56.1594, 0.3847, 0.3334
Android (android.graphics.Color)	4294947502 (0xFFFFB2AE)
YUV	200.5670, -13.0975, 47.7377
Hunter-Lab	74.9378, 23.2116, 14.9000

# Details

The HunterLab color **74.9378, 23.2116, 14.9000** is a light color, and the websafe version is hex **FF9999**. A complement of this color would be **92.3092, -26.1782, -4.3441**, and the grayscale version is **76.2817, -4.0702, 4.1445**.

A 20% lighter version of the original color is **92.6082, 1.3965, 9.6302**, and **52.8608, 21.8736, 12.3038** is the 20% darker color. If you saturate the color by 10%, you get **68.1532, 33.0126, 18.0188**, and if you desaturate by 10%, it is **82.3184, 13.7711, 11.8279**.

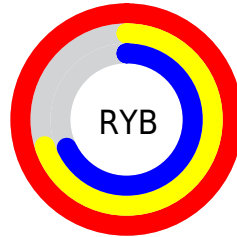
# Distribution



Red (100%)

Green (70%)

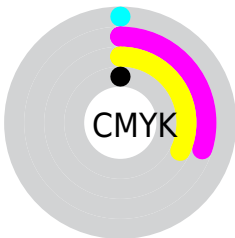
Blue (68%)



Red (100%)

Yellow (70%)

Blue (68%)

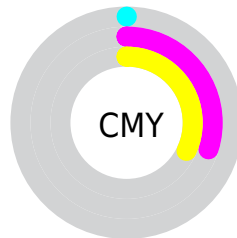


Cyan (0%)

Magenta (30%)

Yellow (32%)

Black (0%)



Cyan (0%)

Magenta (30%)


Yellow (32%)


# Brightness & Saturation Gradients

These gradients show how the HunterLab color 74.9378, 23.2116, 14.9000 changes by changing the brightness by 10 percent. The first figure shows a shift by +10% for each color and the second figure -10%.

Similar to the brightness gradients but the following saturation gradients show a change of the HunterLab color 74.9378, 23.2116, 14.9000 by changing the saturation by 10% instead.





 74.9378, 23.2116,  
14.9000

 74.9378, 23.2116,  
14.9000


202.5567, 25.8984,  
26.7163

 63.5065, 22.5548,  
13.5989

 99.6181, 24.2622,  
17.4936

 52.7224, 21.8051,  
12.2852


112.8078, 24.6768,  
18.7910

 42.6290, 20.9481,  
10.9514


126.5331, 25.0242,  
20.0926

 33.2773, 19.9707,  
9.5851

140.7739, 25.3091,  
21.4004

 24.7315, 18.8579,  
8.1661

155.5122, 25.5356,  
22.7156

 17.0764, 17.5973,  
6.6606

170.7318, 25.7073,

 10.4310, 16.1981,

24.0395

5.9601

186.4177, 25.8274,  
25.3728

0.0000, INF, NaN

0.0000, NaN, NaN

■ 74.9378, 23.2116,  
14.9000

■ 74.9378, 23.2116,  
14.9000

■ 68.1532, 33.0126,  
18.0188

■ 82.3184, 13.7711,  
11.8279

■ 62.0727, 43.0216,  
21.1028

■ 90.1959, 4.7522,  
8.8353

■ 56.8284, 52.8976,  
24.0160

■ 98.4964, -3.8569,  
5.9352

■ 52.5549, 62.0777,  
26.5541

100.0000, -5.3358,  
5.4332

■ 49.3648, 69.8088,

28.4734

■ 47.3057, 75.3458,  
29.5793

■ 46.4090, 77.9376,  
29.9614

# Harmonies

## Analogous

The Analogous color harmony consists of three colors that are next to each other on the color wheel.



74.9396, 26.3728, 2.1111



74.9378, 23.2116, 14.9000



74.9396, 12.5530, 23.1203

# Triad

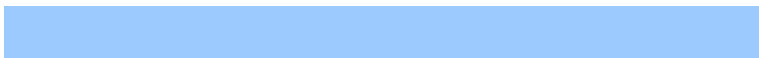
The Triadic color harmony groups three colors that are evenly spaced from another and form a triangle on the color wheel.



74.9396, 23.2083, 14.9013



74.9396, -26.0233, 17.6714



74.9396, -6.0332, -28.0558

# Complementary

The Complementary color scheme is a pair of colors which are on the opposite of each other on the color wheel.



74.9378, 23.2116, 14.9000



92.3092, -26.1782, -4.3441

# Split Complementary

Split-complementary colors differ from the complementary color scheme. The scheme consists of three colors, the original color and two neighbors of the complement color.



74.9396, -19.2351, -21.8079



74.9378, 23.2116, 14.9000



74.9396, -30.1981, 5.9953

# Square

The Square scheme is like the rectangle color scheme, but the four colors are evenly spaced on the color wheel.



74.9396, 23.2083, 14.9013



74.9396, -15.9561, 24.4897



74.9396, -27.8114, -8.6446



74.9396, 8.7505, -24.4222



# Rectangle

The Rectangle color scheme consists of four colors that form a rectangle on the color wheel.



74.9378, 23.2116, 14.9000



74.9396, 3.0367, 25.7756



74.9396, -27.8114, -8.6446



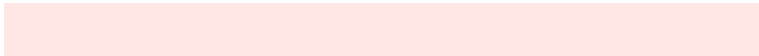
74.9396, -10.7913, -27.0137

# Sweetspot

The Sweet Spot groups the original color and five complimentary colors.



74.9396, 23.2083, 14.9013



91.6314, 3.2044, 8.3169



76.5375, 38.6288, -23.6970



41.8633, 2.0525, 4.0387

0.0000, NaN, NaN



46.2646, -2.4686, 2.5136



# Same Dimension

The Same Dimension uses a secret algorithm to generate beautiful new colors.



74.9396, 23.2083, 14.9013



70.6314, 29.2862, 16.8439



86.0495, 2.3883, 25.4732



42.5805, 1.2825, 3.7806



33.6364, 56.0349, 21.7076



10.7241, 16.7253, 6.9009



# Inverse Universe

The Inverse Universe completely reimagines the original color for something new.



92.3092, -26.1782, -4.3441



91.1044, -29.2953, -5.9447



79.5023, -6.6623, -21.6828



45.0759, -5.7284, 1.0397



60.9457, -30.1623, -11.0652

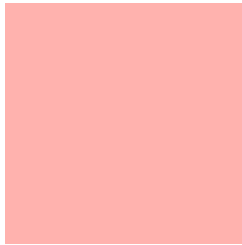


19.1364, -9.5568, -3.2884



# Previews

## White Background



This preview shows how the HunterLab color 74.9378, 23.2116, 14.9000 looks on a white background.

## Color Contrast Check

Large Text (above 18pt) WCAG AA × Fail

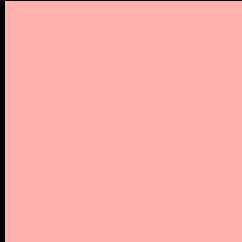
Any Text WCAG AA × Fail

Large Text (above 18pt) WCAG AAA × Fail

Any Text WCAG AAA × Fail



# Black Background



This preview shows how the HunterLab color 74.9378, 23.2116, 14.9000 looks on a black background.

## Color Contrast Check

Large Text (above 18pt) WCAG AA ✓ Pass

Any Text WCAG AA ✓ Pass

Large Text (above 18pt) WCAG AAA ✓ Pass

Any Text WCAG AAA ✓ Pass

If you want to check with other color combinations, try the [Color Contrast Checker](#).

# HunterLab 74.9378, 23.2116, 14.9000 Background



This preview shows how black text looks on a background with the HunterLab color 74.9378, 23.2116, 14.9000.



This preview shows how white text looks on a background with the HunterLab color 74.9378, 23.2116,

14.9000.

# Color Blindness Simulation

Color vision deficiency is a very complex topic, and I could not describe the different causes any better than Wikipedia does, so if you want to learn more, you should check out their [article about color blindness](#).

## Dichromacy



### Original Color

74.9378, 23.2116, 14.9000

### Protanopia

75.0815, -3.5000, 10.3939

### Deuteranopia

75.1059, 5.0822, 15.5580



## Tritanopia

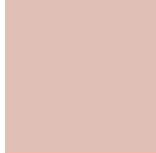
74.8230, 26.3936, 8.4181

# Trichromacy



## Original Color

74.9378, 23.2116, 14.9000



## Protanomaly

74.7062, 5.6562, 11.8632



## Deuteranomaly

74.9263, 11.8833, 15.0926



## Tritanomaly

74.9433, 25.1284, 10.7439

# Monochromacy



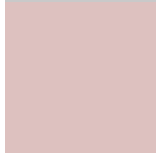
## Original Color

74.9378, 23.2116, 14.9000



## Achromatopsia

76.4250, -4.0778, 4.1523



## Achromatomaly

75.6794, 5.0524, 8.1060

# CSS Examples

## Text

The CSS property to change the color of the text to HunterLab 74.9378, 23.2116, 14.9000 is called "color". The color property can be set on classes, ids or directly on the HTML element.

This example shows how text in the color `rgb(255, 178, 174)` looks like.

```
.text, #text, p{  
    color:rgb(255, 178, 174)  
}
```

If you want to add a text shadow in that color use the text-shadow property, you can generate a text shadow directly with our [CSS Text Shadow Generator](#).

Here you see how black text with a 4 pixel rgb(255, 178, 174) colored shadow looks like.

```
.shadow{ text-shadow: 4px 4px 2px rgb(255, 178, 174) }
```

## Border

The CSS property to change the border of an element to HunterLab 74.9378, 23.2116, 14.9000 is called "border". The border property can be set on classes, ids or directly on the HTML element.

This example shows the color as border, it can be applied via the CSS property "border" or "border-color".

```
.border, #border, table{ border:4px solid rgb(255, 178, 174) }
```



If only the border color should be changed use the property border-color.

```
.border{ border-color:rgb(255, 178, 174) }
```

If you want to add a box shadow in that color use:

Here you see how a box with a 4 pixel rgb(255, 178, 174) colored shadow looks like.

```
.boxshadow{ -moz-box-shadow:4px 4px 4px  
4px rgb(255, 178, 174); -webkit-box-  
shadow:4px 4px 4px 4px rgb(255, 178, 174);  
box-shadow:4px 4px 4px 4px rgb(255, 178,  
174) }
```

# Background

The CSS property to change the background color of an element to HunterLab 74.9378, 23.2116, 14.9000 is called "background". The background property can be set on classes, ids or directly on the HTML element.

```
.background, #background, body{  
background: rgb(255, 178, 174) }
```

If only the background color should be changed can be used:

```
.background{ background-color: rgb(255,  
178, 174) }
```

This example shows the color as background, it is applied via the CSS property "background".

To optimize and compress your CSS code, you can use our [online CSS compressor and optimizer](#) based on csstidy. If you want to create a linear or radial gradient as background or border, check our [CSS Gradient Generator](#).

Hey! You found this booklet interesting? Support Converting Colors with the new Membership Option!

The pro membership hides all ads, plus gives you double the colors in the color bucket, and more awesome pro features!

**[Learn more, Memberships starting at \\$2.50/m!](#)**

**Follow me  
on Twitter!**

@ConvertingColor